

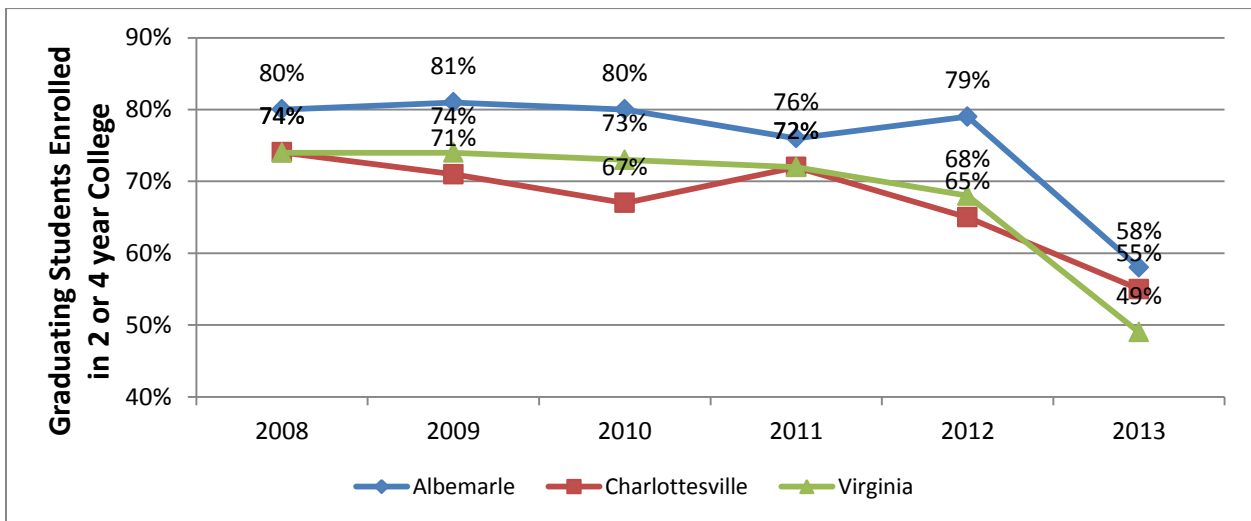
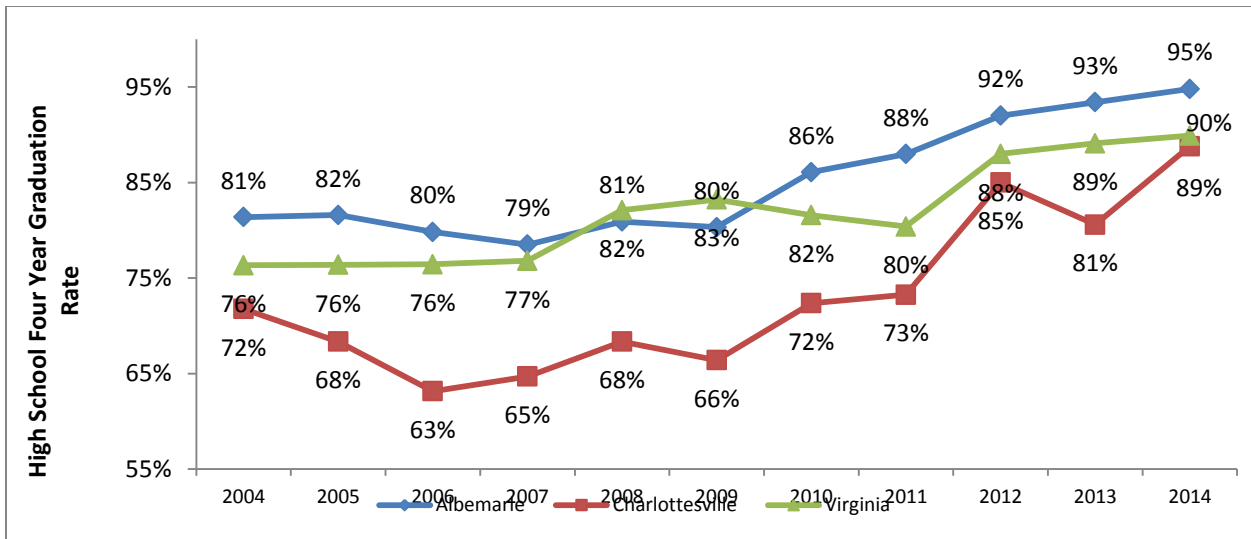
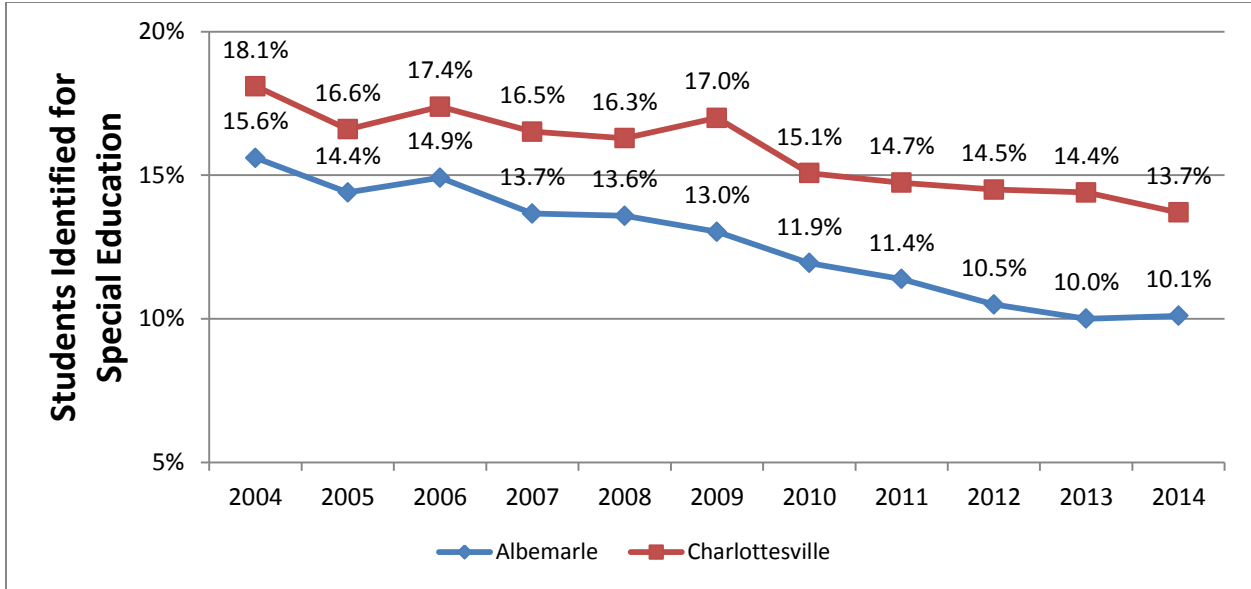
Stepping Stones

October, 2014

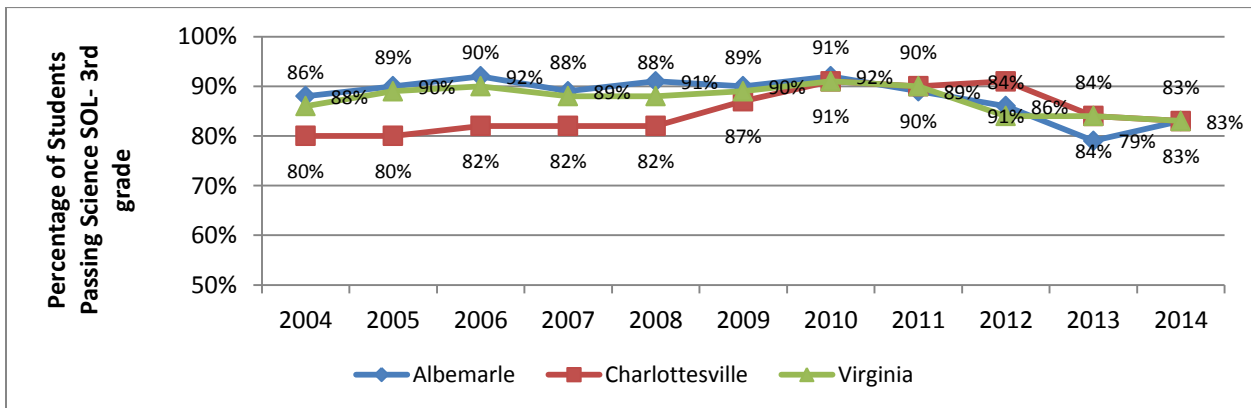
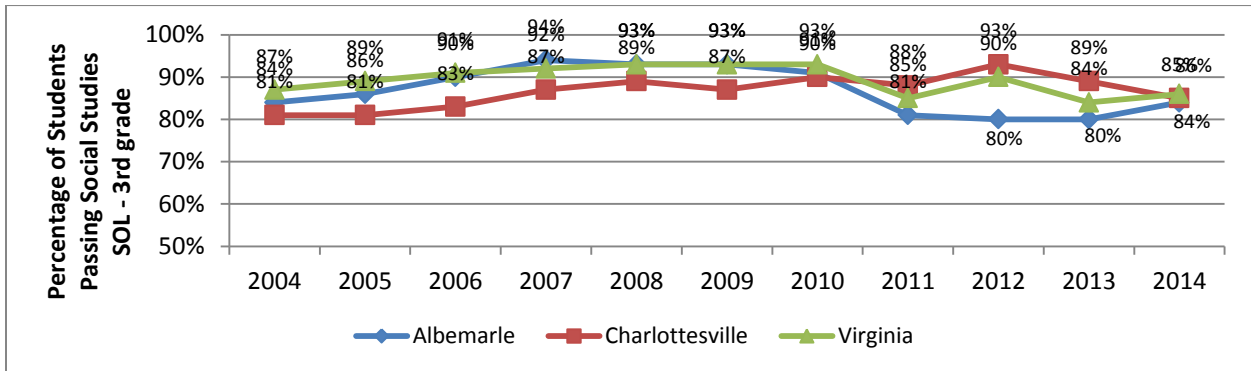
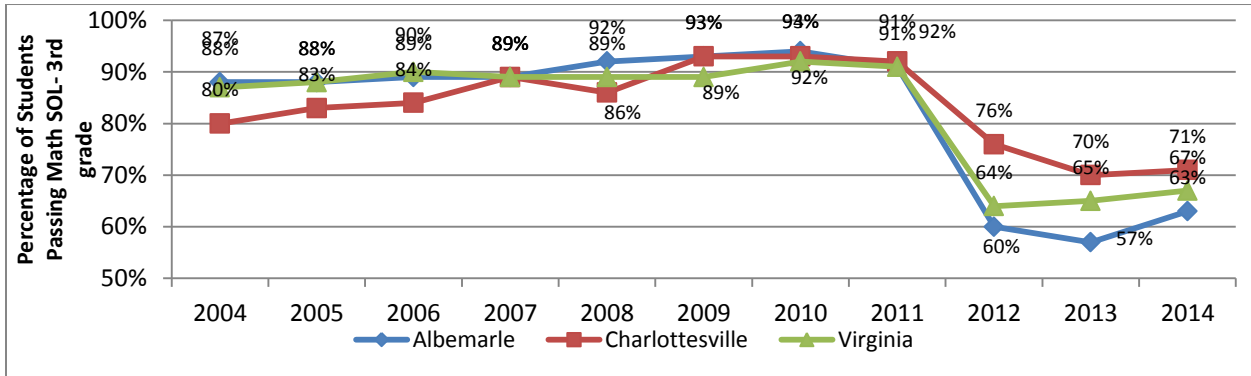
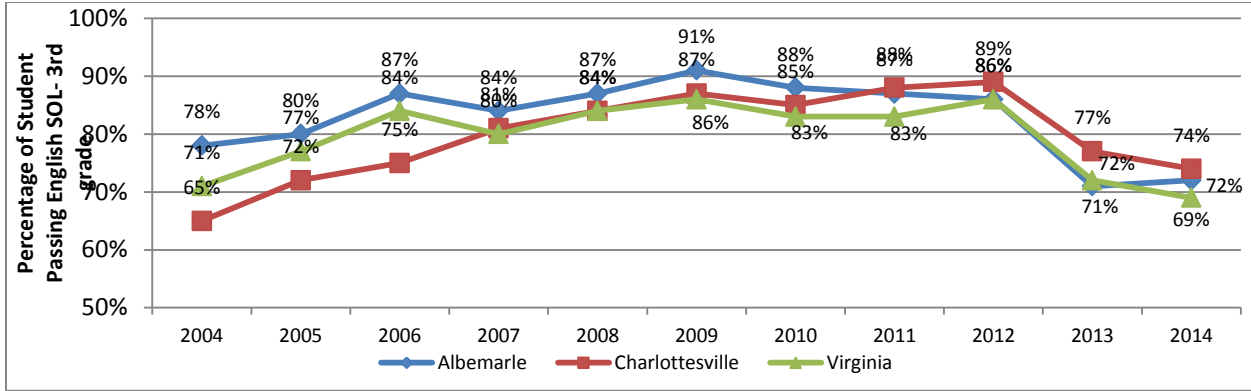
Table of Contents and Sources

| | |
|---|----|
| Academic Achievement (all data from the Virginia Department of Education) | |
| Special Education Enrollment, On-time Graduation, College Enrollment | 3 |
| 3rd Grade SOL Pass Rates | 4 |
| 5 th Grade SOL Pass Rates | 5 |
| 8 th Grade SOL Pass Rates | 6 |
| Community Characteristics | |
| Bus Ridership (data from Charlottesville Area Transit), Voter Registration (data from State Electoral Board), English as a Second Language Students (data from Virginia Department of Education) | 7 |
| Conduct in Community | |
| Underage alcohol arrests (data from Virginia State Police), Child in Need of Services/Supervision Petitions (data from Virginia Supreme Court), Juvenile Delinquency Petitions (data from Virginia Supreme Court) | 8 |
| Comprehensive Services Act Cases (data from State office of Comprehensive Services), arrests for violent crimes (data from Virginia State Police) | 9 |
| Discipline in Schools (all data from Virginia Department of Education) | |
| Reports of Physical Violence, Drug/Alcohol Offenses, Weapons Offenses, Suspensions | 10 |
| Early Childhood Education(all data from Virginia Department of Education) | |
| Students in Public Preschool, Kindergarten Students Identified for Reading Intervention | 11 |
| Family Characteristics | |
| Divorce (data from Virginia Supreme Court), Number of Families (data from US Census), Foster Care (data from Virginia Department of Social Services), Child Abuse/Neglect (data from Virginia Department of Social Services) | 12 |
| Financial Status and Assistance | |
| Per Capita Income (data from US Bureau of Economic Affairs), Child Poverty (data from US Census), Free/Reduced School Meals (all data from Virginia Department of Education), SNAP (data from Virginia Department of Social Services) | 13 |
| Infant and Maternal Health (all data from Virginia Department of Health) | |
| Prenatal Care in First Trimester, Infant Deaths, Low Birth Weight, Births to Mothers with Less Than a High School Diploma | 14 |
| Youth Health | |
| Births to Teens, Teen Pregnancy, Obesity (all data from Virginia Department of Health); Participation in Sports and Extracurricular Activities (all data from Virginia High School League) | 15 |

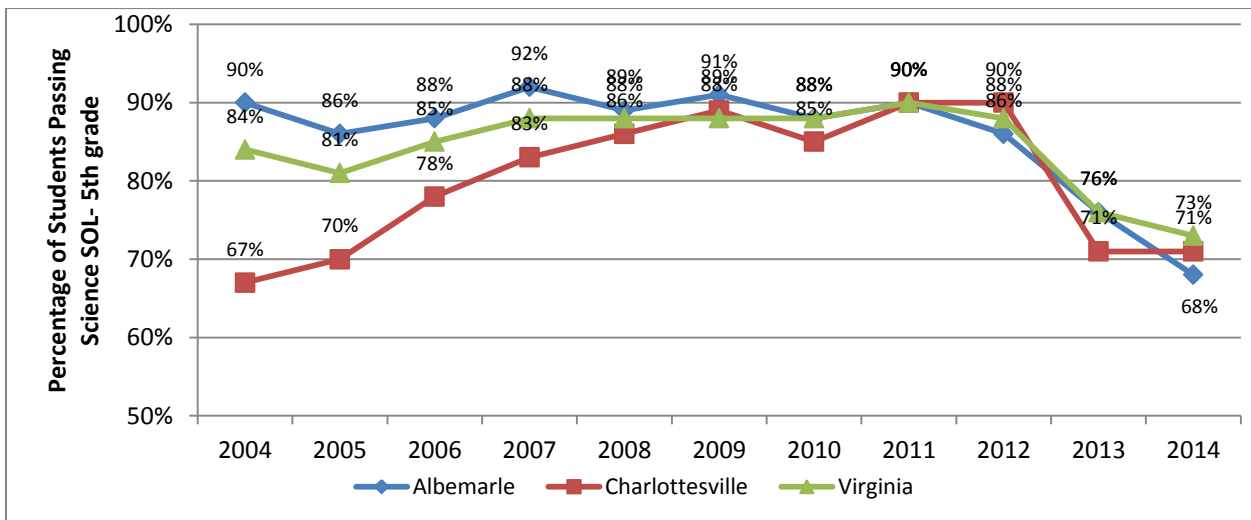
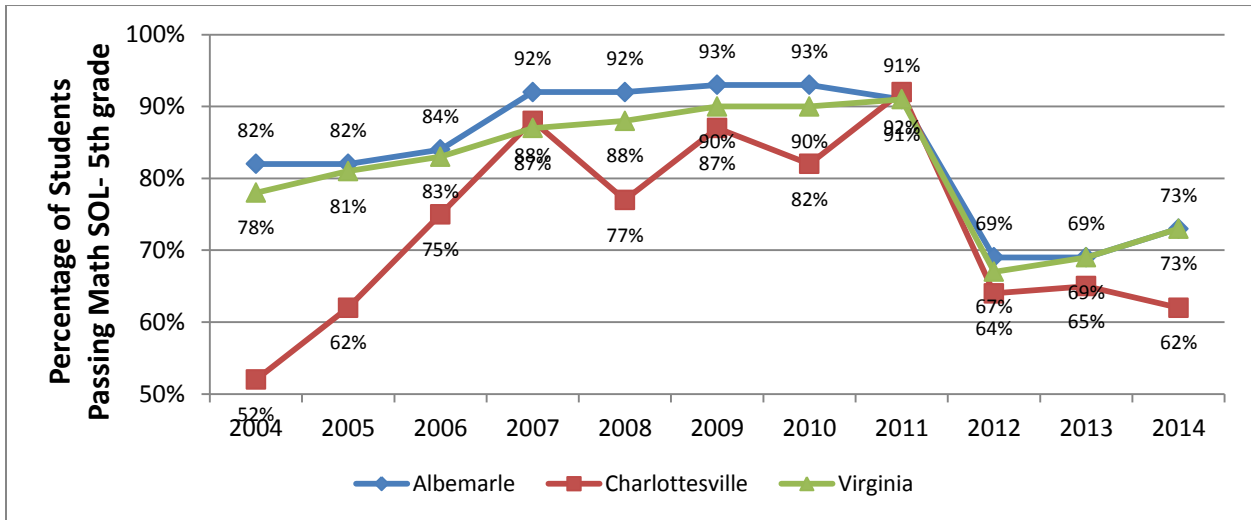
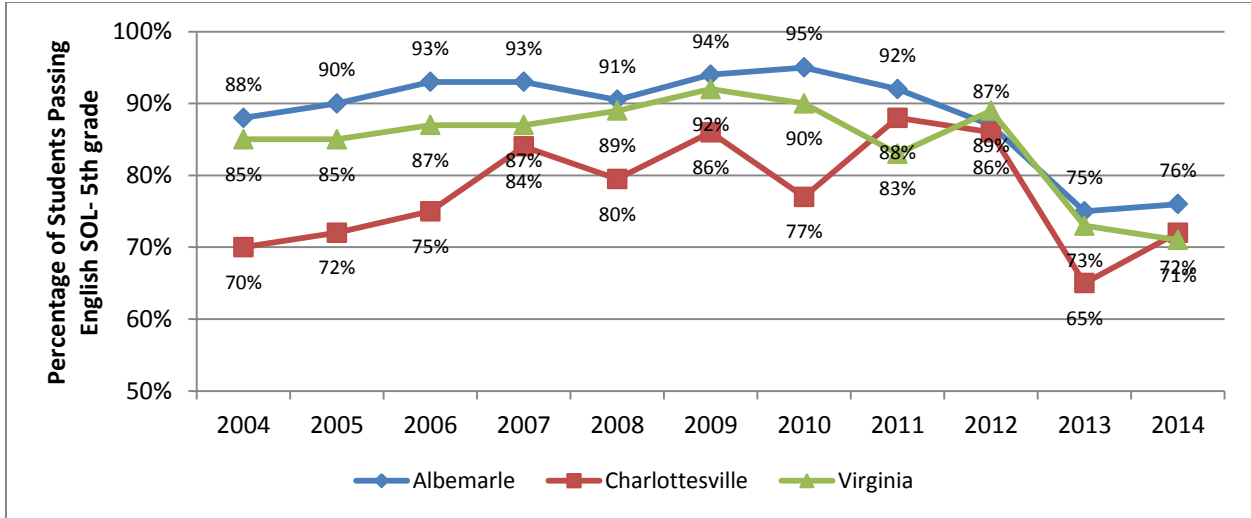
Academic Achievement



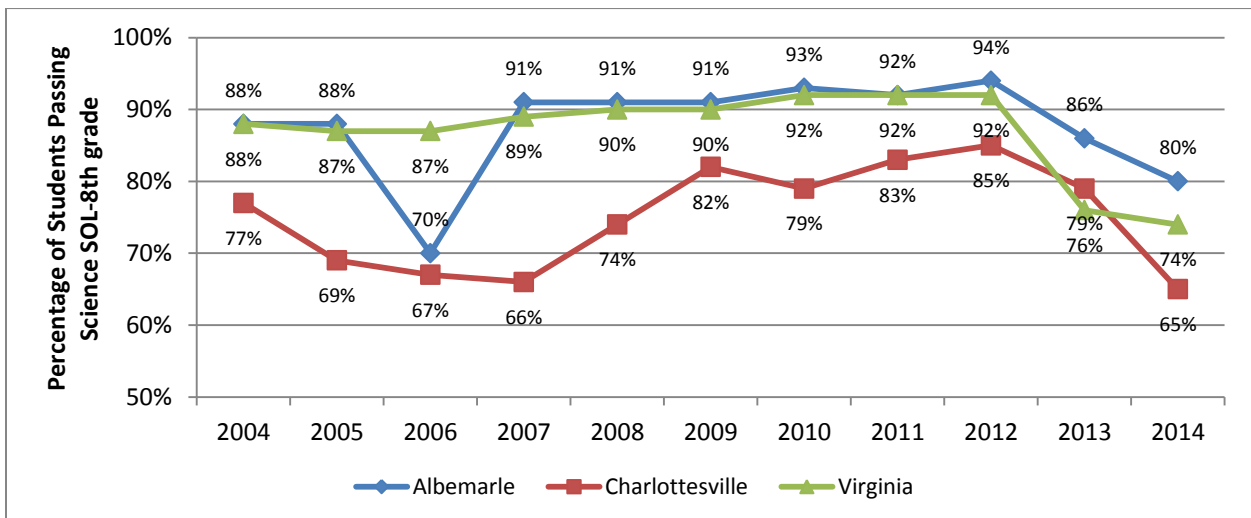
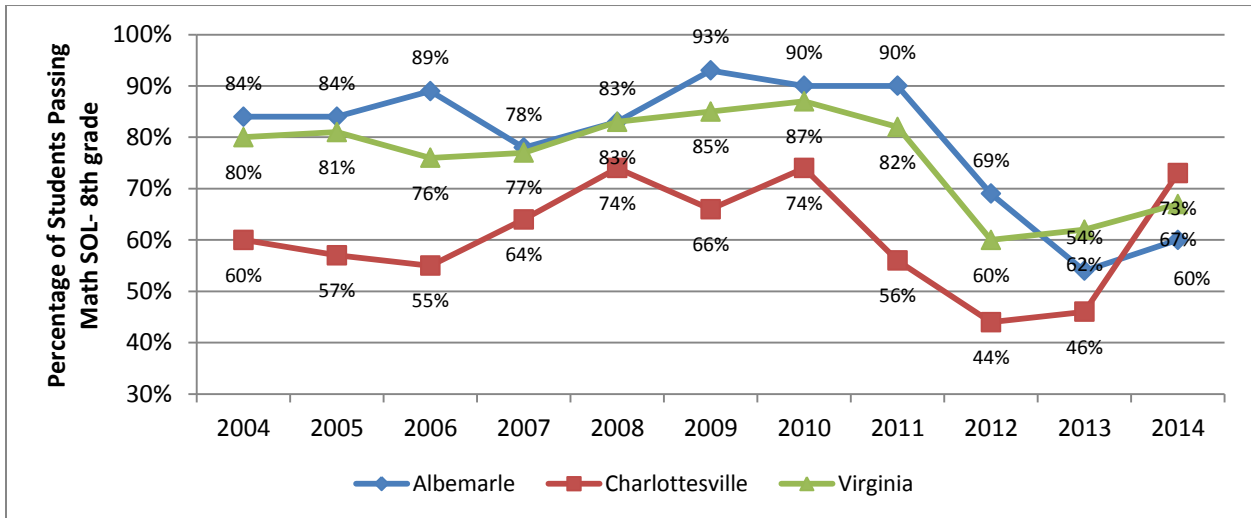
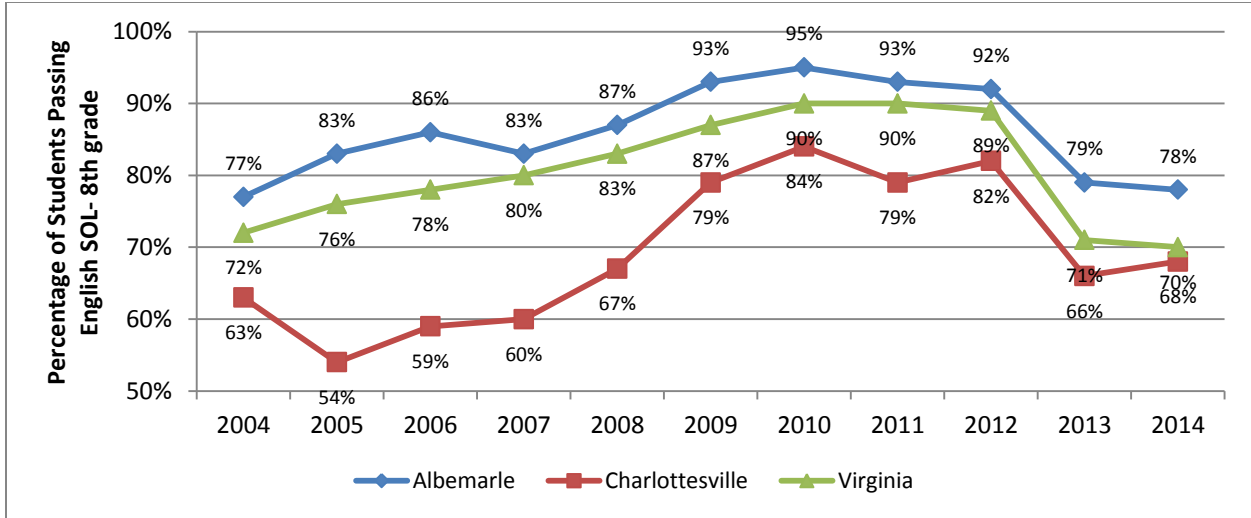
Academic Achievement



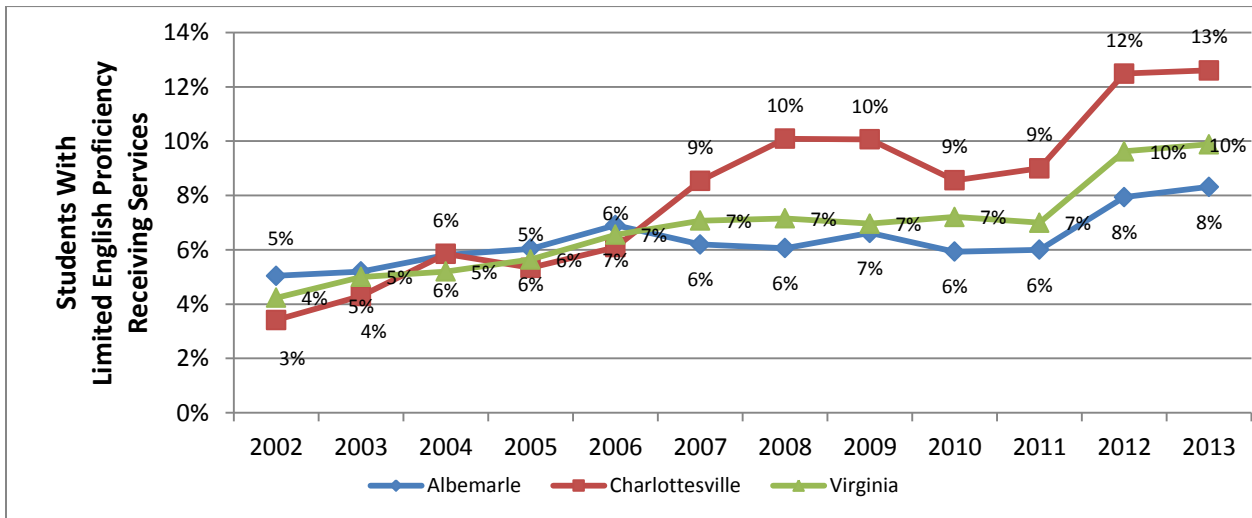
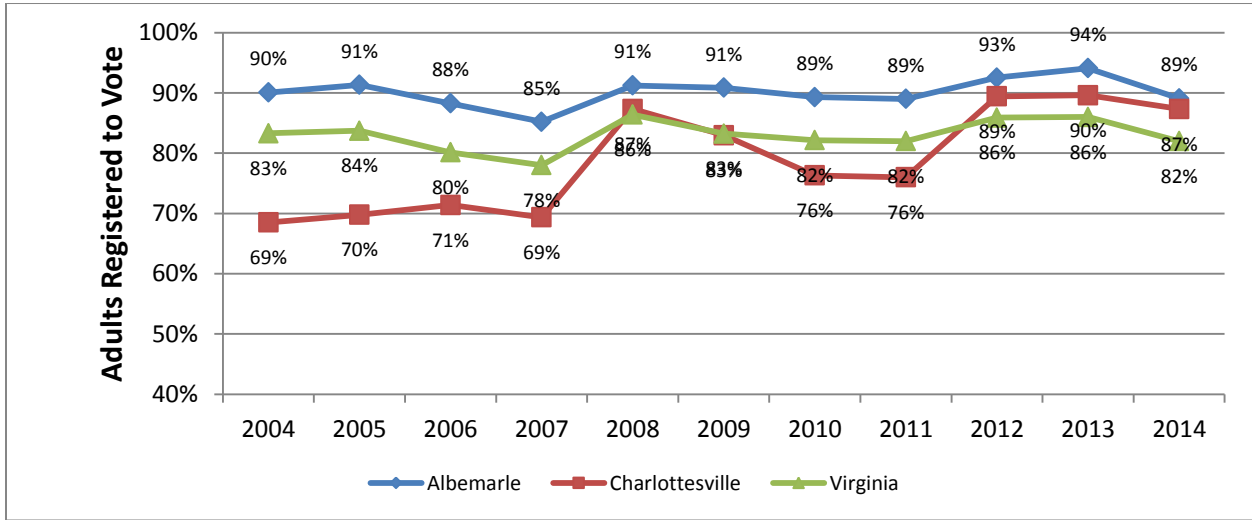
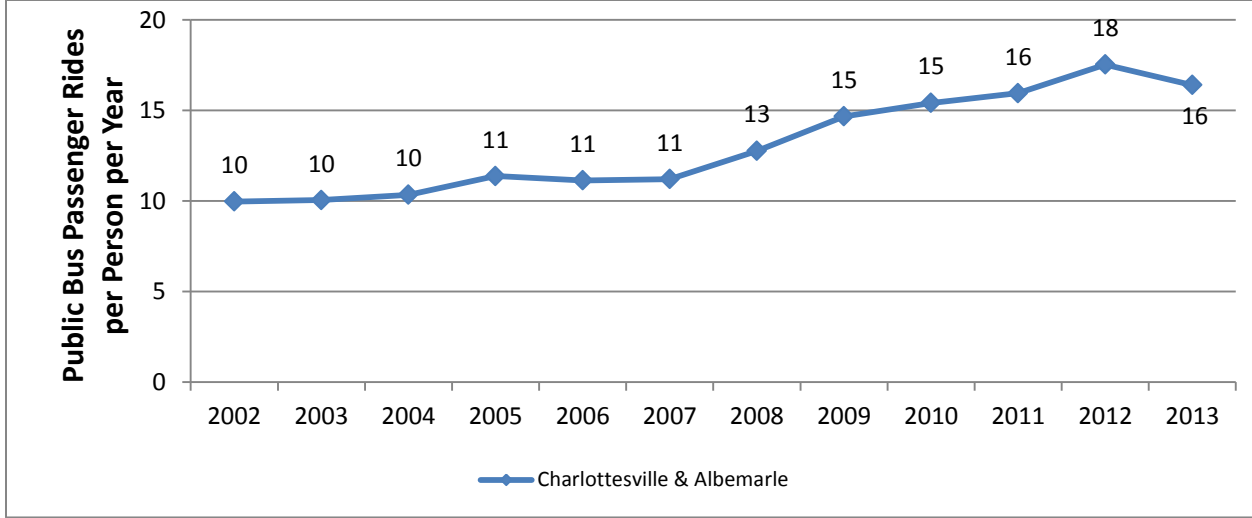
Academic Achievement



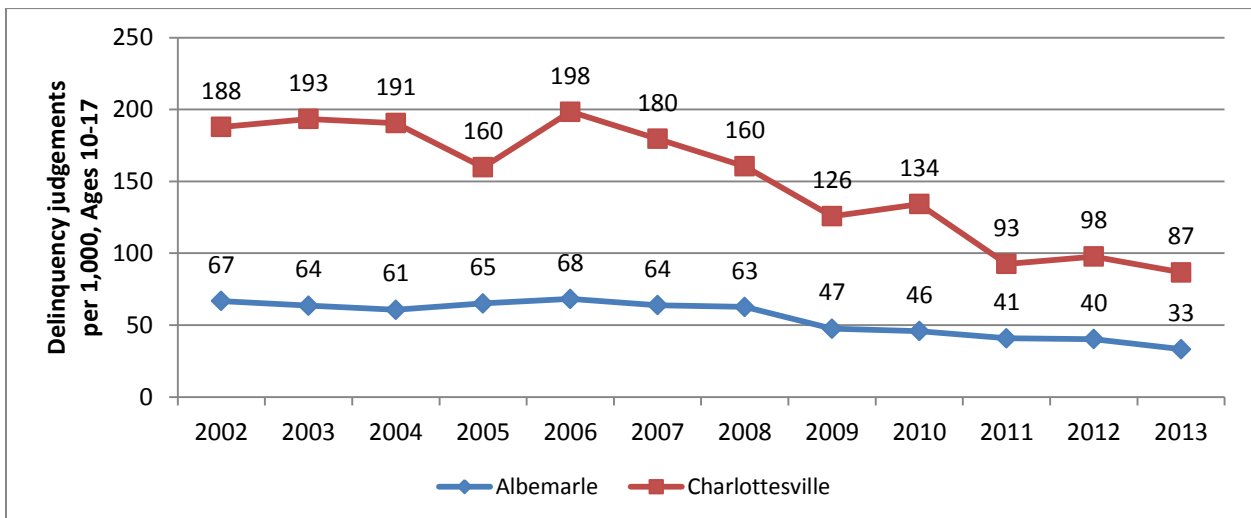
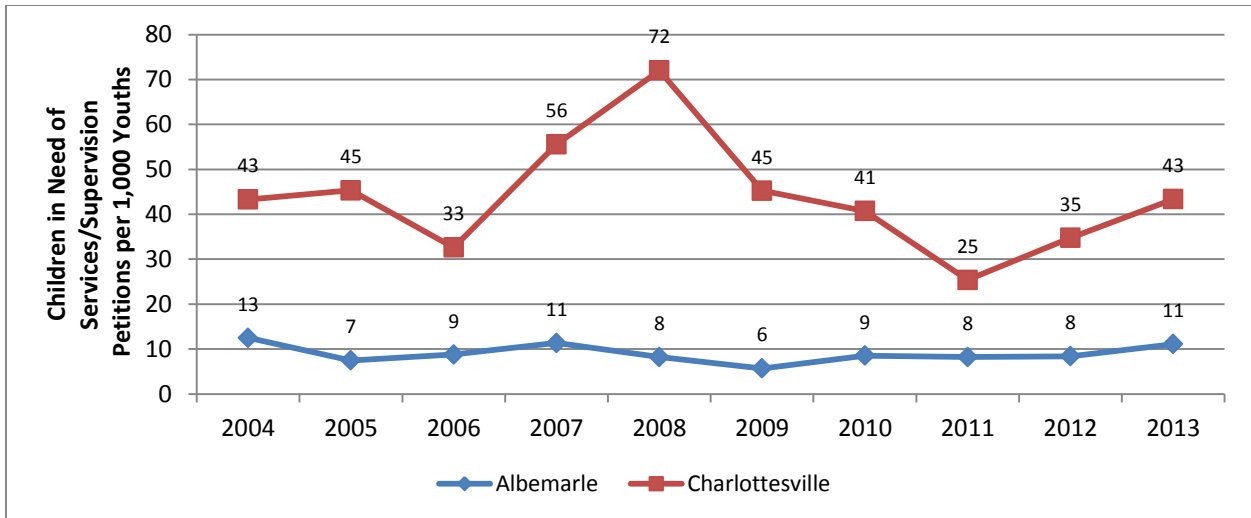
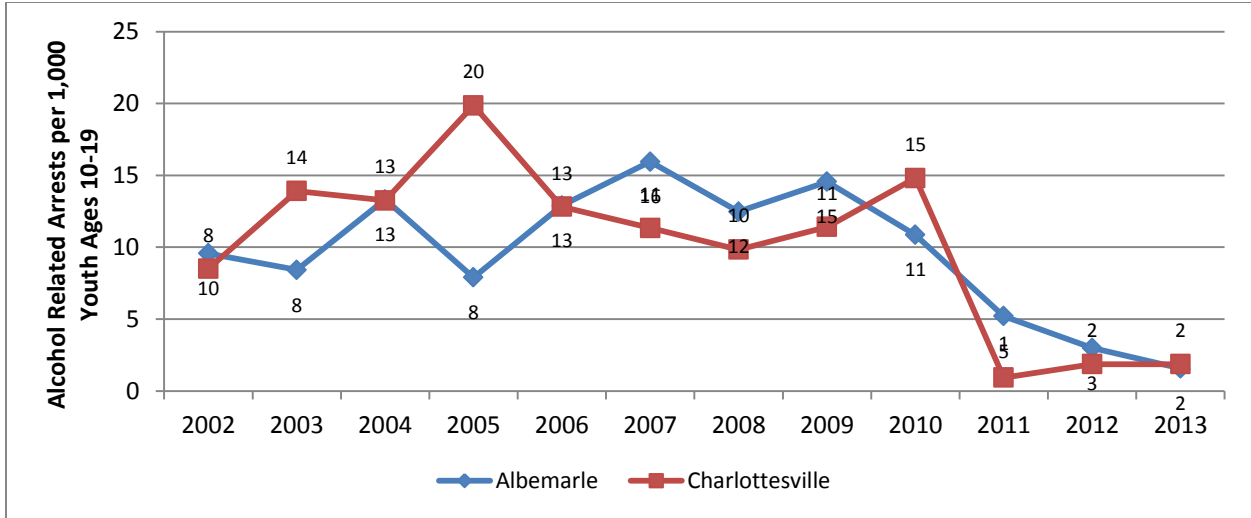
Academic Achievement



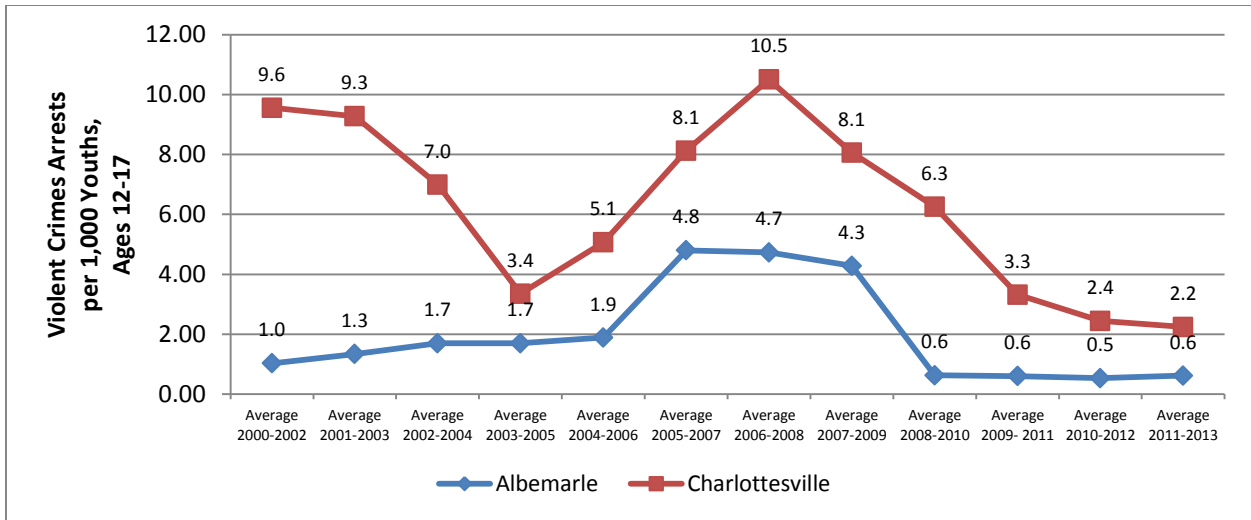
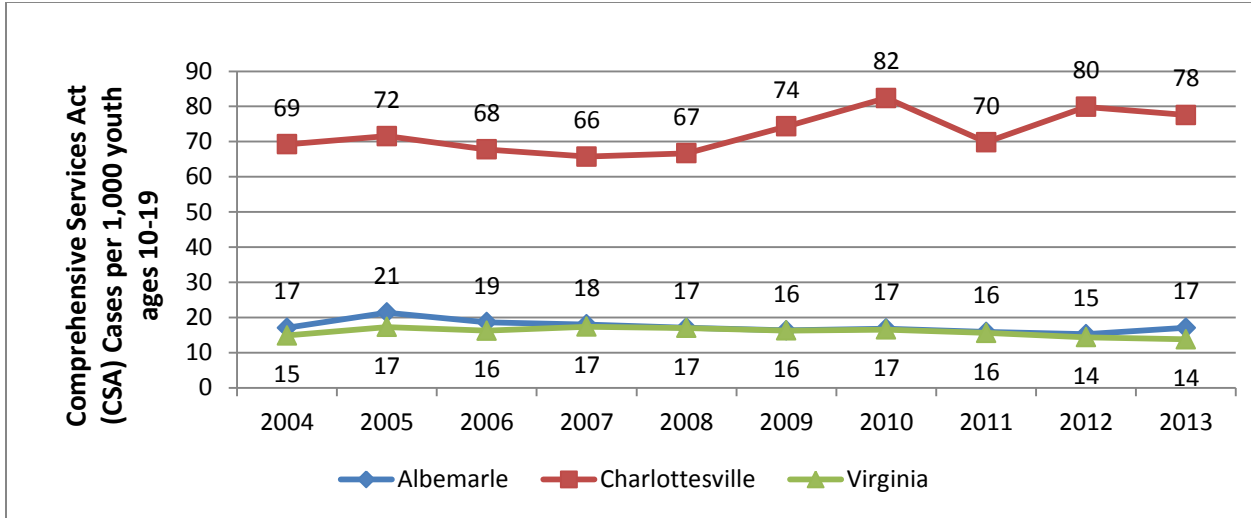
Community Characteristics



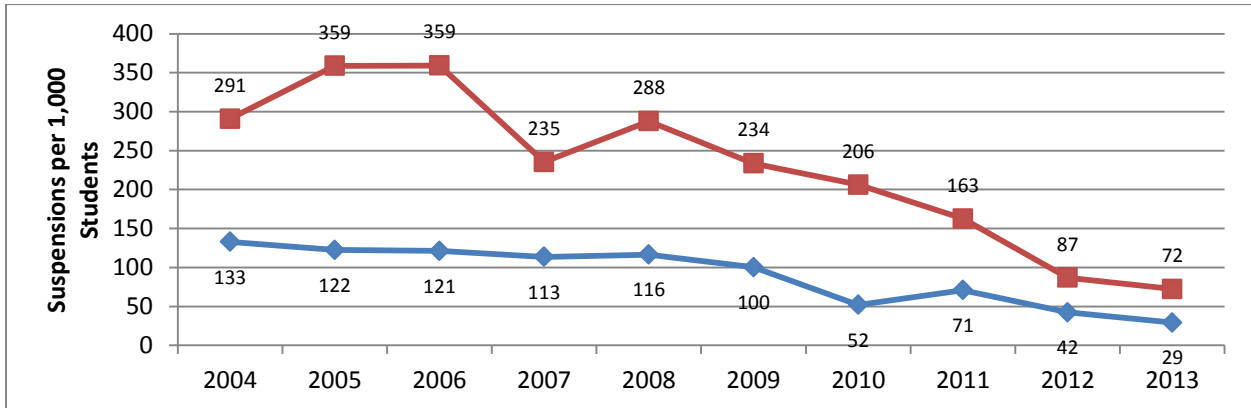
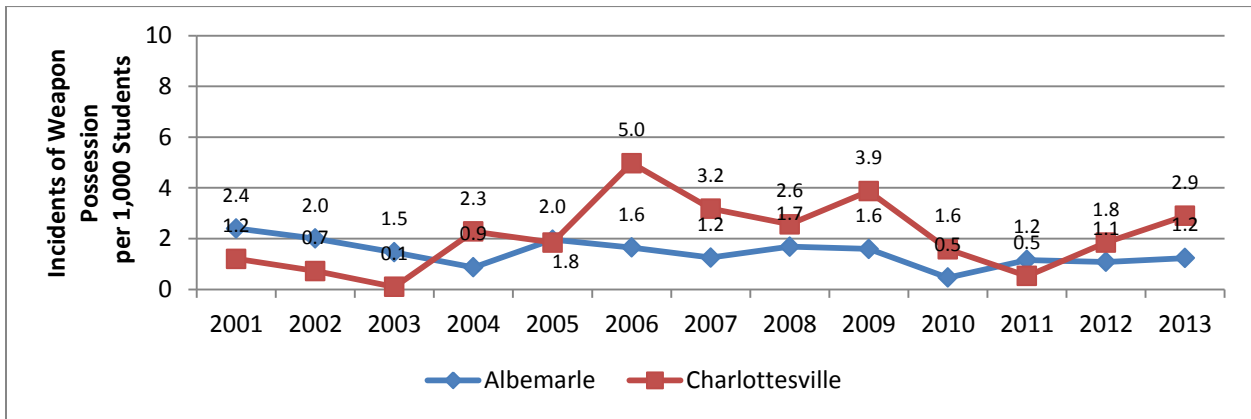
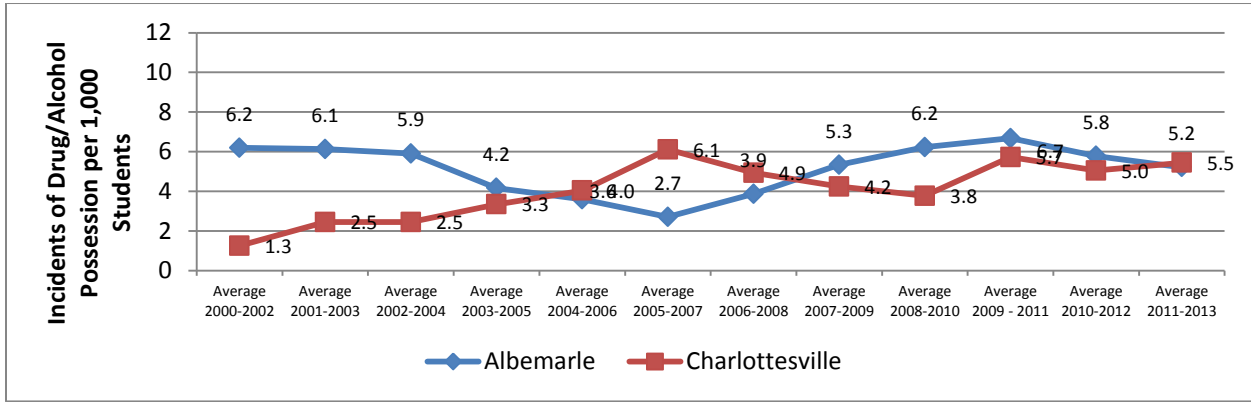
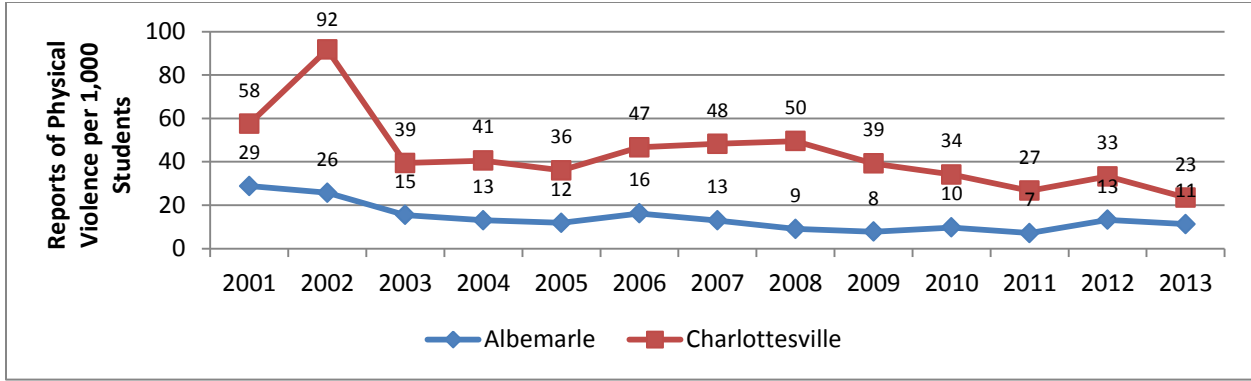
Conduct in Community



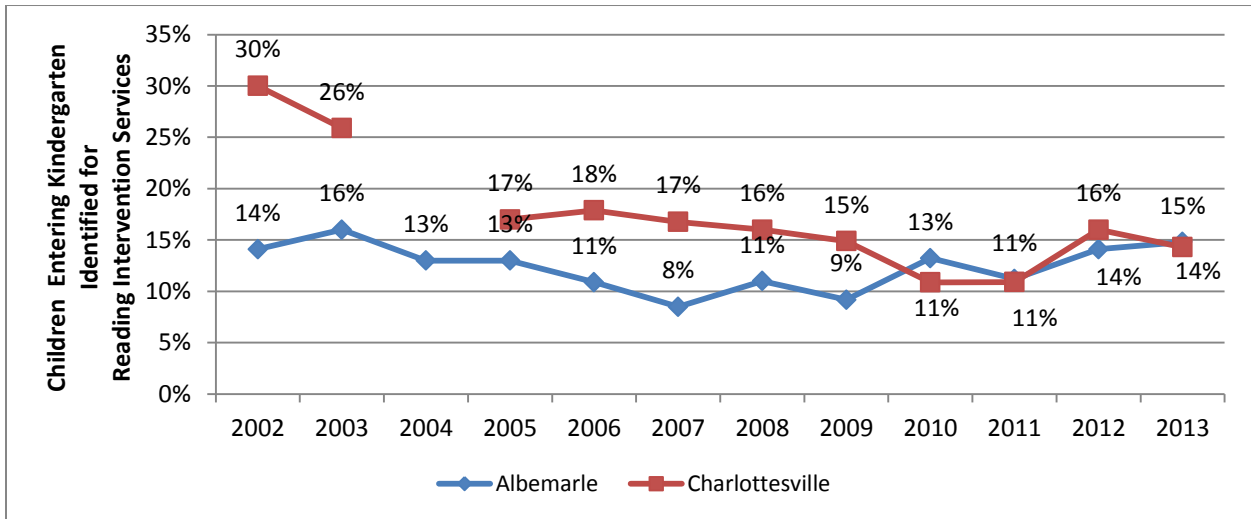
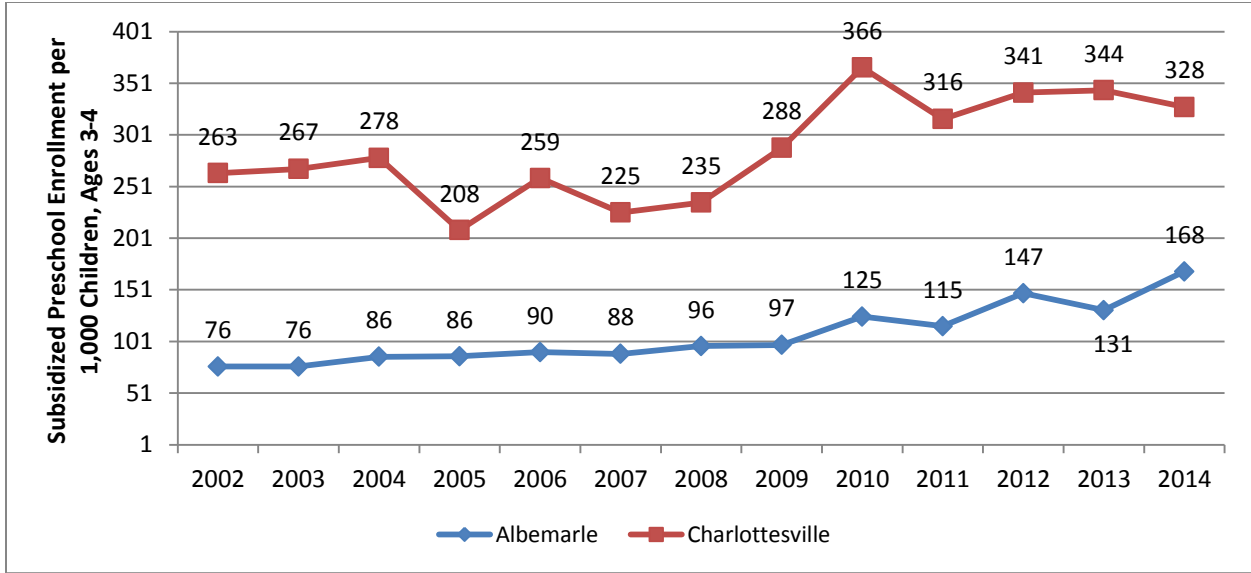
Conduct in Community



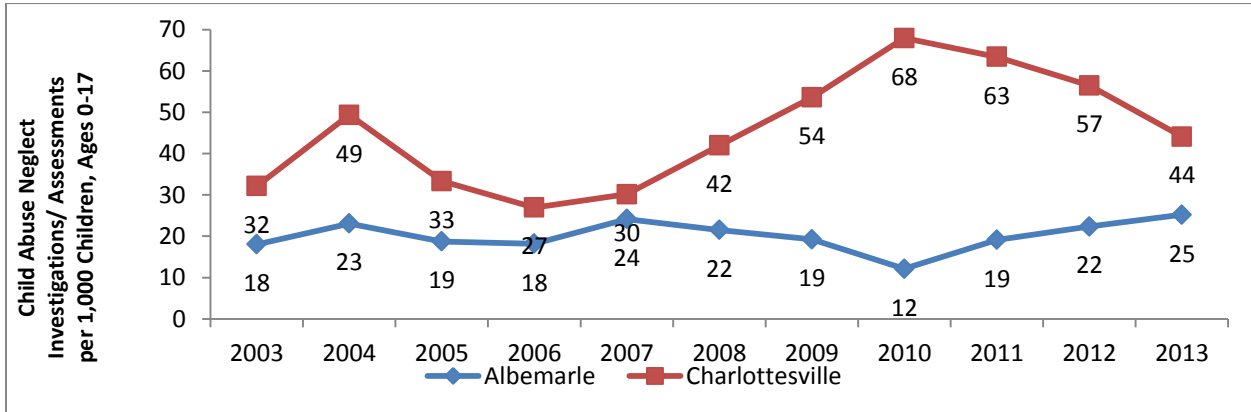
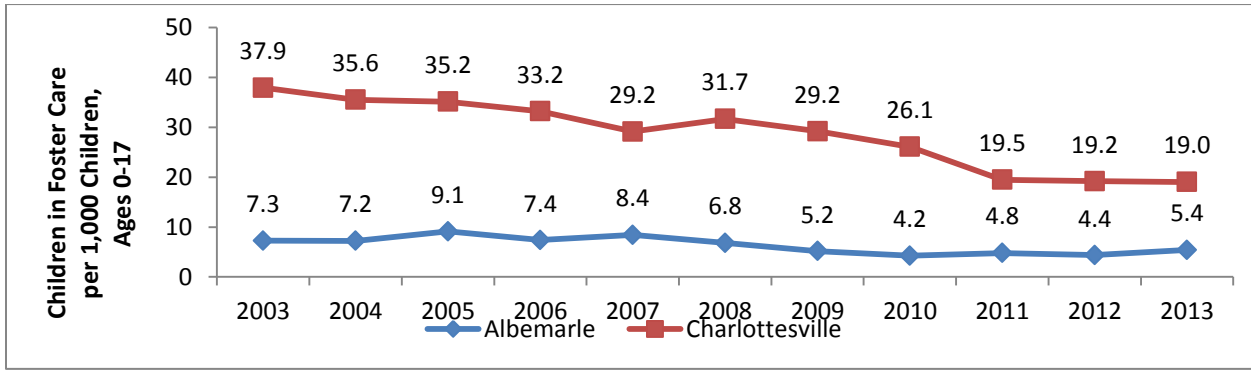
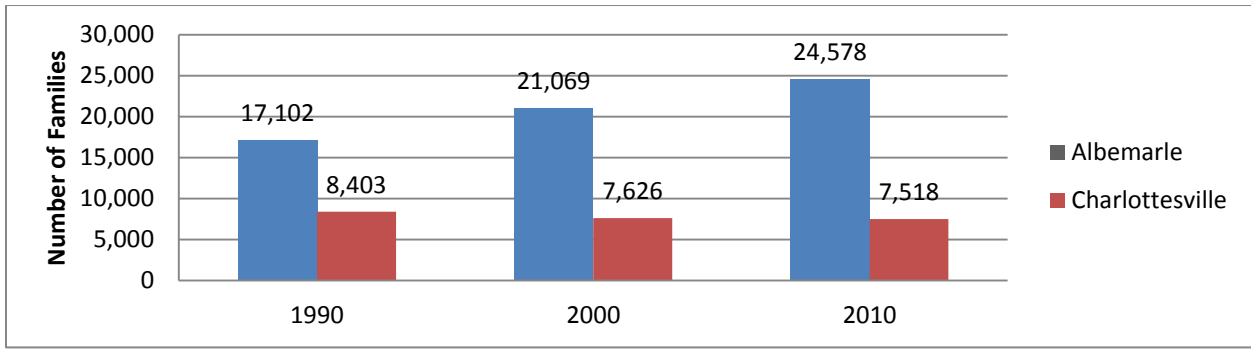
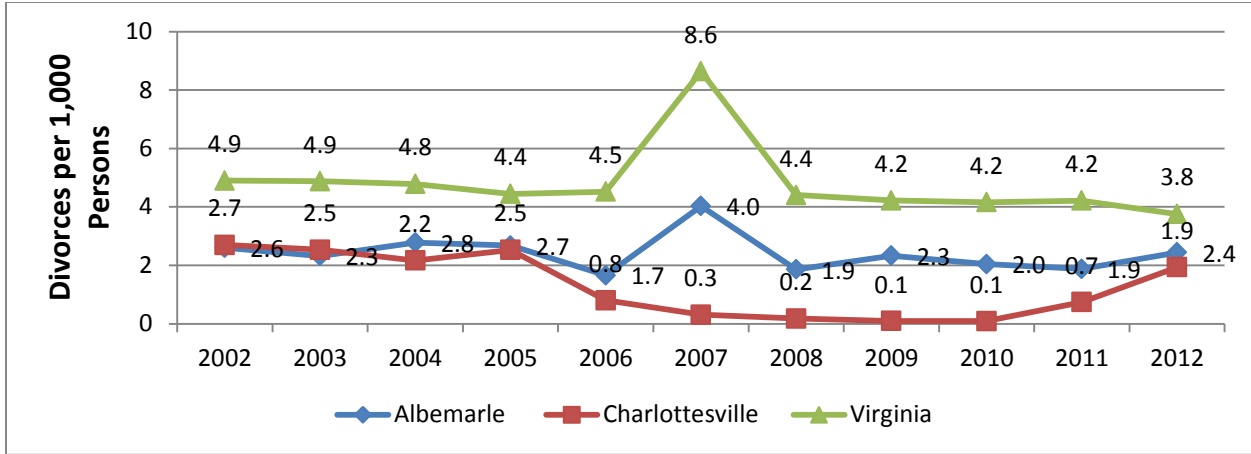
Discipline in School



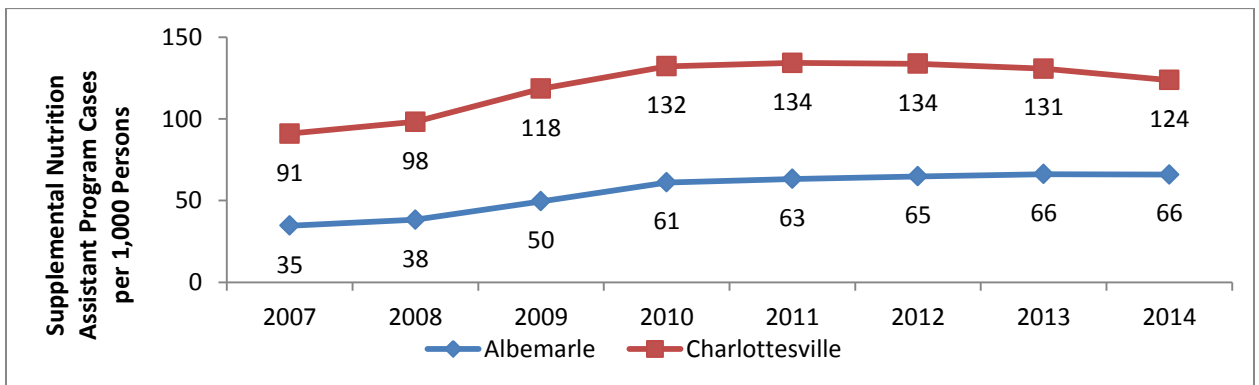
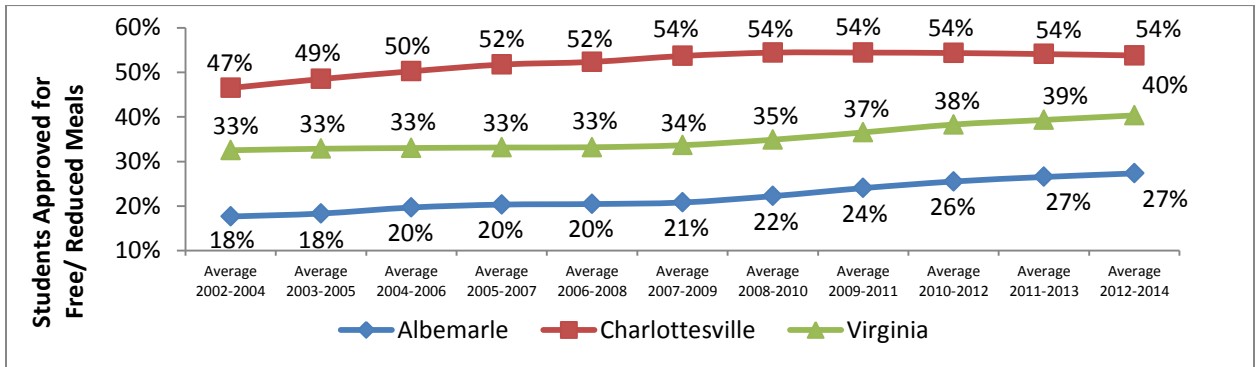
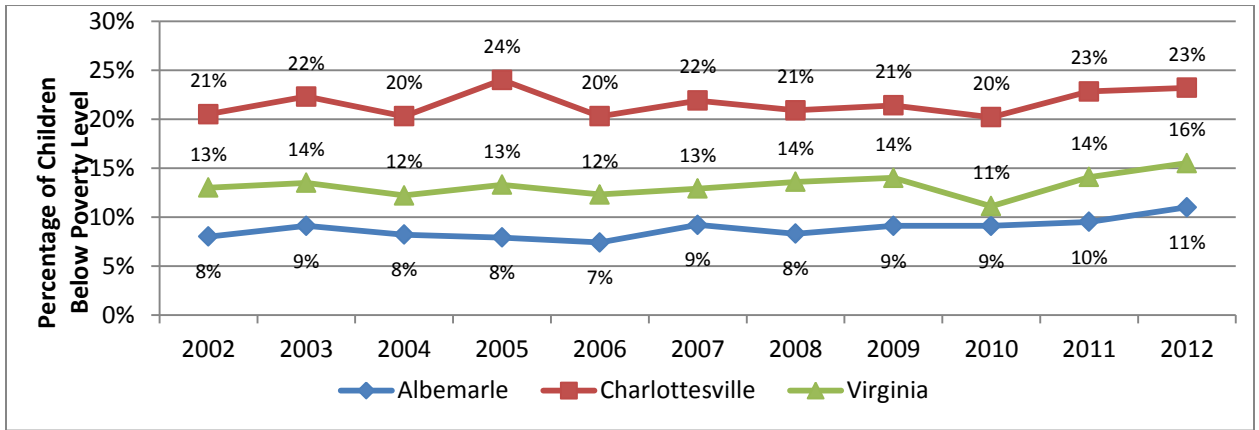
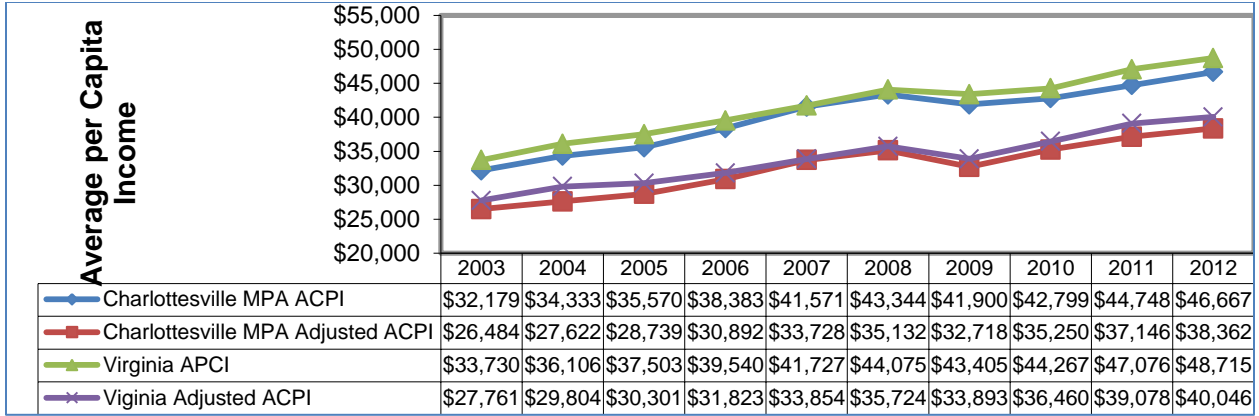
Early Childhood Education



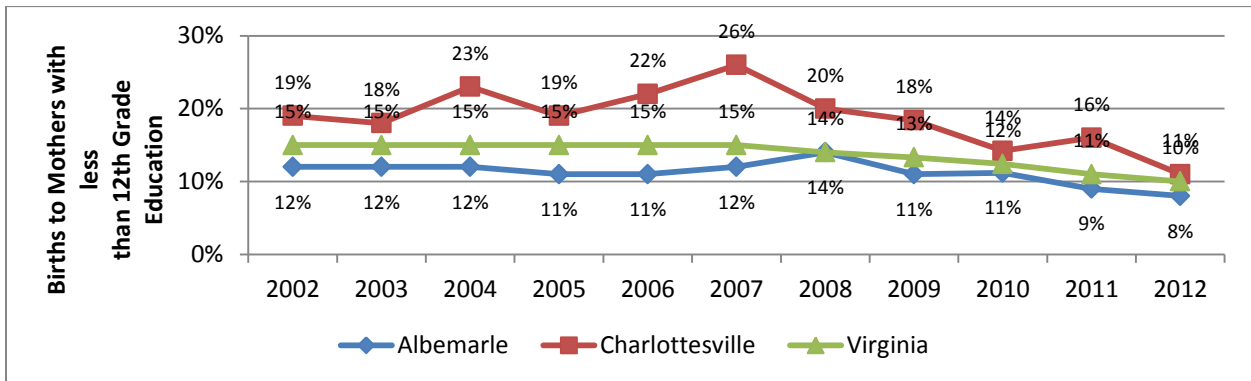
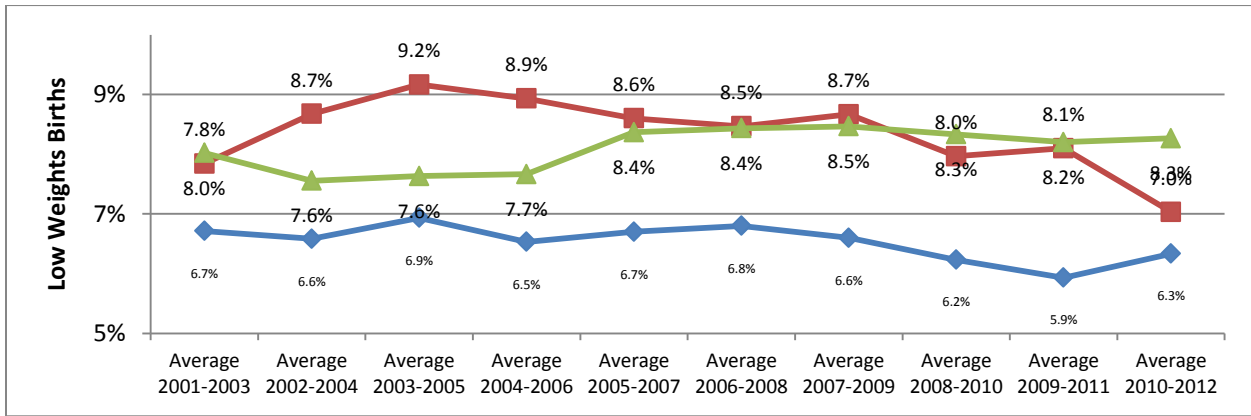
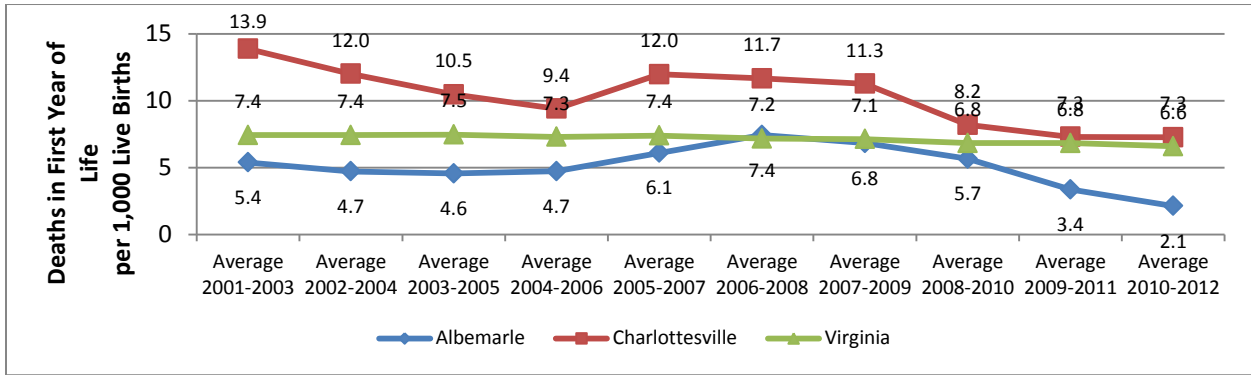
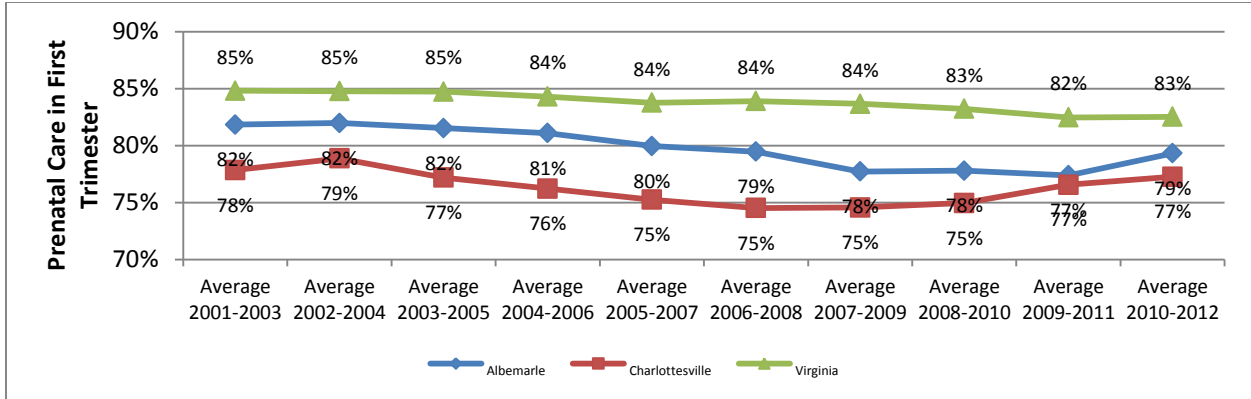
Family Characteristics



Financial Status and Assistance



Infant and Maternal Health



Youth Health

