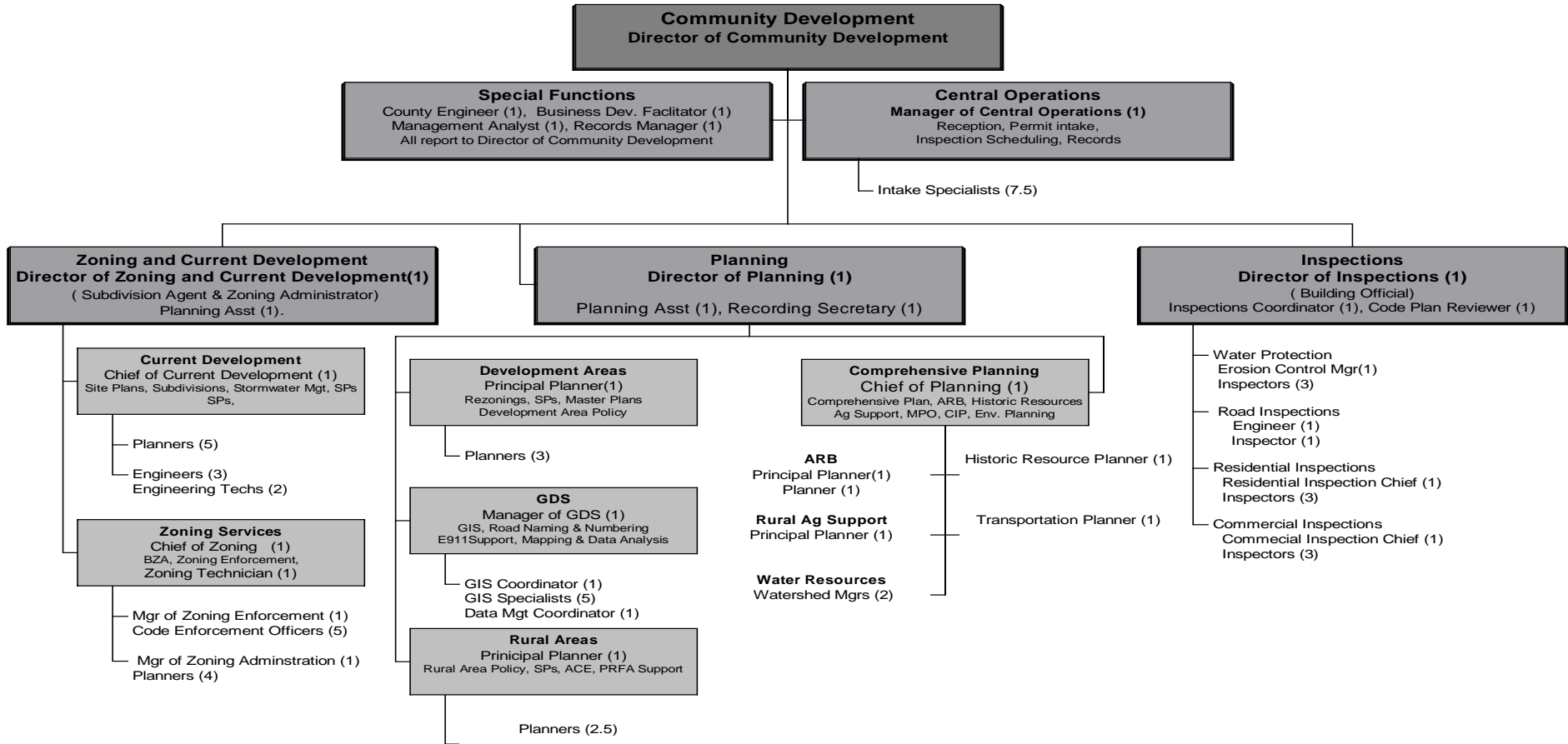


**COMMUNITY DEVELOPMENT
ORGANIZATION PLAN
November 2007**



Divisions are organized by a functional core service.

- Positions are followed by parentheses, with number in each position
- Central Operations provides support services to the three functional areas.
- Zoning and Current Development's core service is administration of plans and plats required by the Subdivision, Water Protection, and Zoning Ordinance
- Planning's core service is administration of the Comprehensive Plan and legislative reviews required by the Zoning Ordinance
- Inspection's core service is administration of the Building Code and enforcement of the Water Protection Ordinance

Frozen Positions (December 2007)

1. **Planning, Development Areas: 1 Senior Planner**
2. **Planning, Rural Areas: 1 Planners**
3. **Planning, Comprehensive Planning: 1 Principal Planner, Rural Ag Support**
4. **Inspections: 1 Engineer, Road Inspections**
5. **Central Operations: 1 Intake Specialist (Starts end of December)**