

(2) EXISTING TREES  
(TO REMAIN)

EXISTING PARKING LOT WITH  
15 SPACES (TO REMAIN)

((5) EXISTING FLOWERING  
ORNAMENTAL TREES (TO REMAIN)

(1) LARGE SHADE TREE (3-1/2" CAL.)

EXISTING PARKING LOT WITH  
35 SPACES (TO REMAIN)

OLD IVY ROAD

EXISTING  
2-STORY BUILDING

PROPOSED HEIGHT  
INCREASE OF 15'

PROPERTY LINE (TYP.)

PROPOSED SCREENING  
SHRUBS (24" HEIGHT)

(1) LARGE SHADE TREE (3-1/2" CAL.)

EXISTING DENSE  
VEGETATION (TO REMAIN)

(2) LARGE PARKING LOT  
TREES (2-1/2" CAL.)

STEEP SLOPES (MANAGED, TYP.)

CSX RAILROAD (TYP.)

IVY ROAD  
(ENTRANCE CORRIDOR)

0' 20'

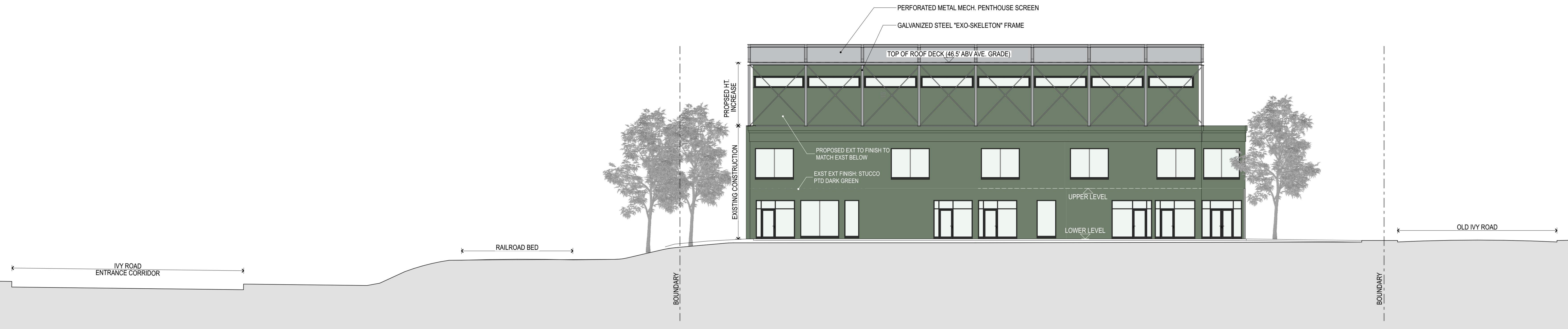


1" = 20'

**FORMWORK**  
FORMWORK DESIGN OFFICE, LLC  
CHARLOTTESVILLE, VIRGINIA

CHARLOTTESVILLE CLIMBING GYM  
**CONCEPTUAL SITE PLAN**  
NOV 20 2023

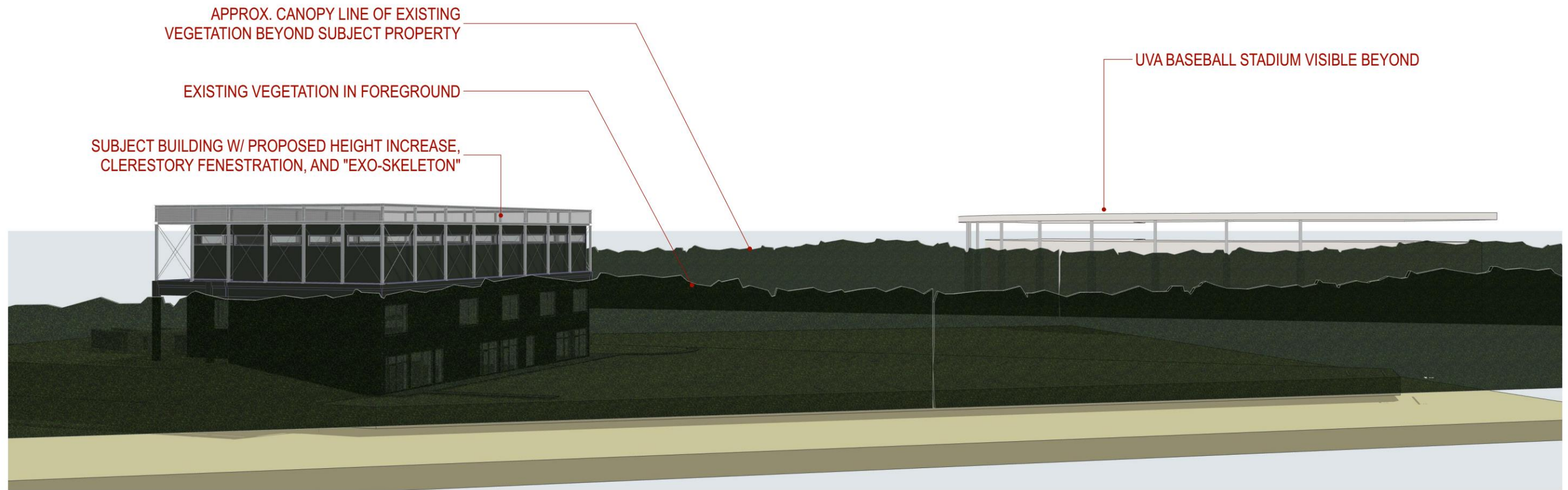




**1 SITE CROSS-SECTION**  
SCALE: 1" = 10'

PROJECT DATA	
EXISTING GROSS AREA	6,689 X 2 LEVELS = 13,378 GSF
PROPOSED GROSS AREA	NO CHANGE TO FOOTPRINT
TOTAL NET AREA	5,776 X 2 LEVELS = 11,552 NSF
NET OFFICE AREA	3,040 NSF
NET RECREATION AREA (ANTICIPATED)	8,512 NSF





## 2200 Old Ivy Road Proposed Height Increase

The proposed height increase of fifteen feet is to accommodate a special athletic function within: indoor rock climbing. Given its location on the edge of the University of Virginia's primary athletic percent, the proposed design takes as precedents the nearby Disharoon Park (UVa's baseball stadium), and Memorial Gym, also nearby with a strong relationship to the entrance corridor.

Characteristics of Memorial Gym that are echoed in Disharoon Park, and the design proposed here include:

- building form scaled and shaped by athletic activity within
- clerestory fenestration to illuminate indoor activity
- spare fenestration intended for vision
- "muscular" exposed structure, supporting high roof, enabling clerestory fenestration



MEMORIAL GYM, UNIVERSITY OF VIRGINIA



DISHAROON PARK, UNIVERSITY OF VIRGINIA



