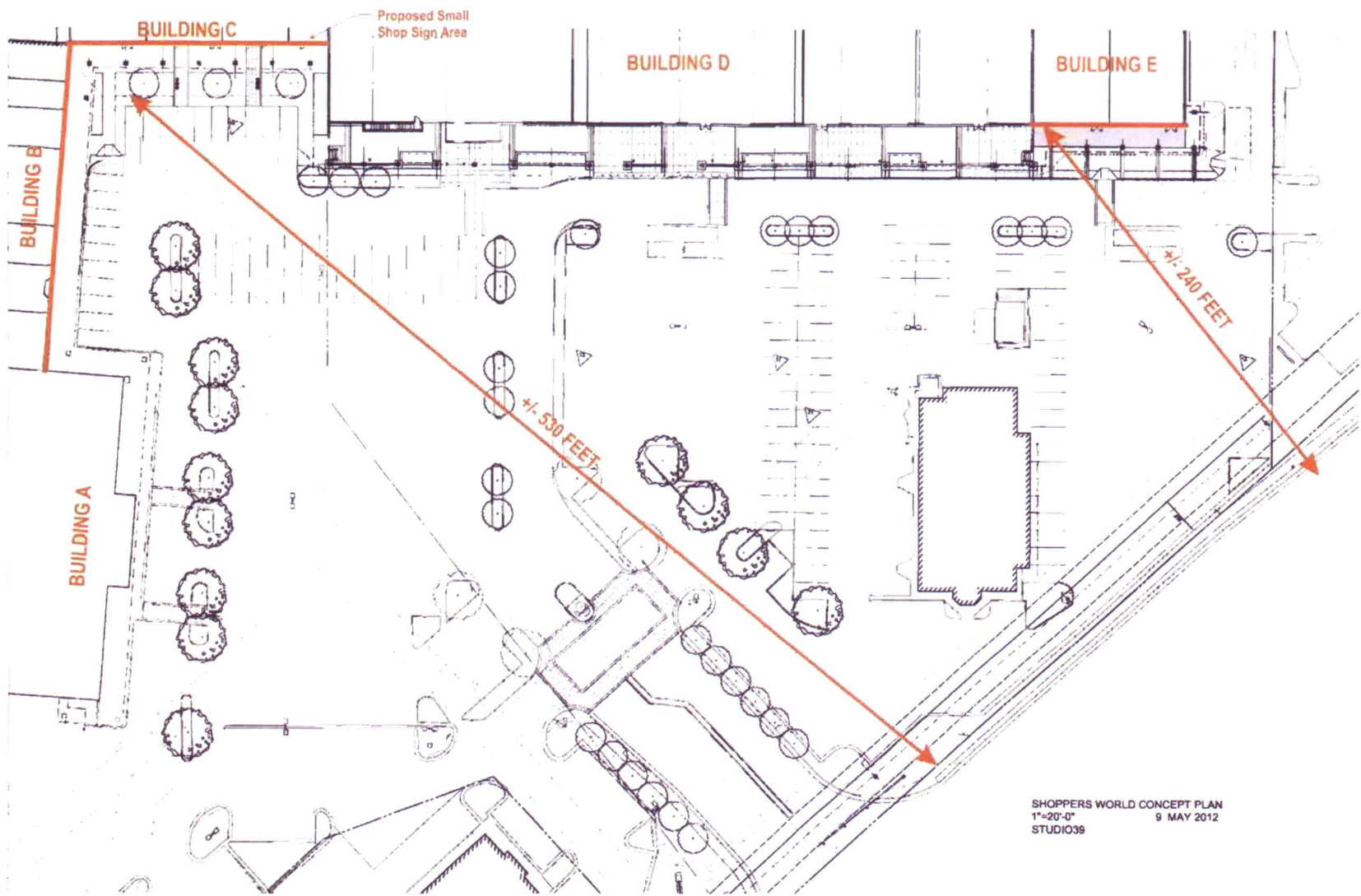


ARB COMPREHENSIVE SIGN REVIEW APPROVED CRITERIA – TWENTY NINTH PLACE (Previously Shopper’s World Shopping Center)

ARB-2012-117, ARB-2012-11, ARB-F(Sign)2000-25; TAX MAP/PARCEL#: Tax Map 61M, Block 12, Parcels 1C and 1C2

SIGN FEATURE	APPROVED CRITERIA	APPROVED CRITERIA	APPROVED CRITERIA
SIGN TYPE	Channel Letter	Reverse channel letter with halo lighting, mounted on a panel	Hanging tenant panel
LOCATION(S)	On the faces of the tower elements	On the shingled mansard roofs of building B, C and E, centered vertically on the mansard	Hung from the ceiling of the colonnade
LETTER FACE COLOR	White, red, yellow, green, black, or colors comparable to and compatible with the existing signs at site	White, red, yellow, green, black, or colors comparable to and compatible with the existing signs at site; letters of individual signs are limited to the use of a single color	Unlimited
TRIM CAP COLOR/RETURN COLOR	Bronze or other colors compatible with the proposed sign and the existing signs and shopping center	To match letter colors	N/A
RACEWAY COLOR	To match the wall surface behind the sign	Raceway located behind panel - not visible	N/A
CABINET/PANEL FACE COLORS	N/A	Gray PMS 423C	N/A
SIZE LIMITATIONS	According to Zoning Ordinance	Letter height shall not exceed 30”; panel height shall not exceed 4”; maximum panel length for building E shall not exceed the span of the brick piers of building E	According to Zoning Ordinance
LOGO/GRAPHICS DETAILS	Small in comparison to text area	If a sign includes a logo/graphic, the logo/graphic shall not encompass more than fifteen (15) percent of the total allowed sign area; graphics may be halo lit or non-illuminated; graphics, when used, must be incorporated as an integral part of the overall sign	No restriction
ILLUMINATION DETAILS	Internally Illuminated	Internal LEDs for halo illumination	Non-illuminated
LETTER TYPE/FONT	No restriction	No restriction	No restriction
NOTES	-	Channel letters offset from sign panel to allow halo effect; panel mounted to raceway, raceway mounted to angles, angles attached to roof.	Non-illuminated hanging tenant panel signs do not require ARB approval.



SHOPPERS WORLD CONCEPT PLAN
 1"=20'-0"
 STUDIO39 9 MAY 2012

Federal Realty
 INVESTMENT TRUST



Shoppers World

Tenant Roof Signs
 2012.09.28

rethink | reinvent | reposition | retool | reestablish | reemerge

BROWN CRAIG TURNER
 one charles center
 100 n charles street | 18th floor
 baltimore, maryland 21201
 + 410.837.2727
 + 410.837.7447
 copyright © 2012 bct

