

TAKE 5 OIL CHANGE

AT 820 PANTOPS CORNER WAY

PRESENTED BY

The logo for AB COX is a dark blue rounded rectangle containing the text 'AB' over 'COX' in white serif font, with a horizontal line under 'AB'.

AB
COX

IN ASSOCIATION WITH



09 | 07 | 2021

	2 TABLE OF CONTENTS
	3 PROJECT DESCRIPTION
	4 PROPOSED REVISIONS
5 RESPONSE TO INITIAL SITE PLAN REVIEW COMMENTS	
	6 VICINITY AERIAL PHOTOGRAPHS
	7 IMMEDIATE ADJACENT CONTEXT
8 “TAKE 5” NATIONAL BUILDING BRAND	
	9 ENTRANCE CORRIDOR PERSPECTIVE
	10 PROPOSED PROJECT SITE PLAN
	11 PROPOSED LANDSCAPING
	12-15 PROPOSED ELEVATIONS
	16 PROPOSED MATERIAL PALETTE
	17 PROPOSED EXTERIOR PERSPECTIVES
	18 PROPOSED DUMPSTER ENCLOSURE
19 LOCATION OF MECHANICAL EQUIPMENT	
	20 SITE LIGHTING

A. INTRODUCTION

Take 5 Oil Change is a rapidly growing national brand in the "quick oil change" service industry. With over 500 locations across the nation, Take 5 is interested in the Pantops Corner location because of the high daily traffic counts, the ease of access on and off a major corridor, and the adjacency to similar automotive-service uses. Understanding the Entrance Corridor Guidelines will alter the national brand standards for Take 5's buildings, the owner and the national brand have approached the design with flexibility to ensure compliance with the design standards.

B. COMPATIBILITY WITH FORMS AND FEATURES OF SIGNIFICANT HISTORIC BUILDINGS

The proposed building employs the traditional three-part composition found in traditional and historic structures within the area: a foundation / base, a middle section / body, and a cap / cornice. The proposed building features a strong, visually-heavy masonry base, an EIFS body, and a cornice band marked by brake metal horizontal banding and coping trim. The tower element features a traditional hipped roof, clad in a traditional standing seam metal roofing.

C. RELATABILITY TO SITE AND SURROUNDING CONTEXT

Automotive dealerships, service stations, and fuel-dispensaries are common along this portion of the Route 250 Entrance Corridor. The site is smaller than many adjacent parcels, and therefore the proposed building is also comparatively smaller, but still within keeping, of the adjacent structures. The project takes many cues from it's immediate adjacent context, particularly the material palette and roof forms found at the WaWa's, as well as the material and color palette of the adjacent O'Reilly's.

D. HUMAN SCALE

Relatively small in scale, the proposed project continued to relate to a human scale and reduce height by introducing a horizontal header band at the 12' bay door header height. Appropriate amounts of glazing in a legible and orderly rhythm help maintain a project of human scale.

E. COHESIVE WHOLE

A legible, cohesive material palette defines a cohesive whole, as well as a unifying hipped roof element that elevates the cohesive main flat roof form.

F. LIMITING OF "BLANKNESS"

The three bay doors, as well as customer storefront doors and glazing into the waiting room limit any large swatches of EIFS and blank areas are proportional solids to the complimentary voids. Long, flat facades are eliminated by the introduction of the tower element that establishes a hierarchy, creates a location for signage, and breaks the plane of the front and rear facades by extending beyond the main building form by 12". A horizontal header band, in combination with coping trim, contributes to limiting any areas of blankness above the bay doors.

G. UNIFYING GROUPS

Given the small scale and size of the building, the effectiveness of unifying groups is limited. However the repetition of the bay doors, the eifs columns, and the exterior light sconce does create a repetitive motive that contributes to the legibility of the cohesive whole and limits blankness along the facades.

H. WINDOW GLAZING

in an effort to improve the transparency into the proposed building, glazing has been included in the roll up bay doors. storefront windows are included into the manager's office (and the rear of the building) and also in the waiting area. A storefront door allows access to the waiting area from the side elevation. the glazing will meet county requirements for visible light transmittance and reflectivity.

I. ACCESSORY STRUCTURES AND EQUIPMENT

HVAC equipment is minimal, and will be screened from view by the building. The manager's office and waiting area will be service by a PTAC unit; the associated louvers for the system will be facing away from the Entrance Corridor, located on the rear of the building. Electrical meters and panels are located on the south facade, and screened from view by the O'Reillys.

J. LIGHTING

Exterior site lighting will be included in subsequent submissions. Anticipated downlight sconces have been shown in the proposed renderings and elevations.

K. SIGNS

Exterior signs will be refined and detailed in subsequent submissions. Exterior signs will follow the Entrance Corridor Design Guidelines for signs.

K. LANDSCAPING

Landscaping plans and selected species will be included in subsequent submissions. Trees in the proposed renderings have been shown per County Entrance Corridor requirements (streets trees at 30' O.C., interior drive aisle trees at 20' O.C. etc.)



1. Provide samples for all materials and colors.

Response: Samples have been submitted to Albemarle County Department of Community Development at the Front Desk.

A 2. Revise the mix of wall materials to make brick the primary building material. Thin brick is acceptable provided that the corners appear as full dimensional brick.

Response: The facade has been revised to incorporate brick as the primary building material. The base of the building remains as a full brick dimension Glen-Gery Utility-sized brick in "Carbon Black" with Workrite Mortar in "WR-2062 Smoke" color. The main body of the building has been revised from EIFS to Glen-Gery thin brick "Feldhaus 800 Classic Gray Smooth" with Workrite Mortar in "WR 2055 Gravel" color. The tower element remains in EIFS painted "Ellie Gray" to establish a visual hierarchy and distinguish the tower element, whose facade remains proud of the base and body of the structure.

3. Revise the architectural drawings to include the standard window glass note: Visible light transmittance (VLT) shall not drop below 40%. Visible light reflectance (VLR) shall not exceed 30%.

Response: The following standard note has been added to the architectural drawings: "Windows will not be highly tinted or highly reflective. Visible light transmittance shall not drop below 40% and visible light reflectance shall not exceed 30%."

4. Revise the site plan to provide a dumpster enclosure detail. A material that coordinates with that approved for the main building would be appropriate.

Response: Perspective views of the proposed dumpster enclosure have been added to page 18 of this document. Please note the 8' tall CMU dumpster enclosure is now clad with the Glen-Gery "Feldhaus 800 Classic Gray Smooth" brick with Workrite mortar in "WR-2055 Gravel" color.

5. Show the location of mechanical equipment (building and ground mounted) on the site and architectural plans and show how it will be screened from the EC.

Response: A packaged terminal air conditioner (PTAC) is a type of self-contained heating and air conditioning system. This is the only mechanical equipment on site, as most of the service bays are unconditioned. The through-wall mechanical system is located on the rear of the building, facing away from the Entrance Corridor and therefore not visible to the Corridor.

6. Provide a complete lighting plan with the final site plan.

Response: A lighting plan showing proposed pole lights and exterior surface-mounted sconces has been included in the final site plan and is included on page 20 of this document.

7. Revise the plan to provide trees at 3.5" caliper at the time of planting along the Rt. 250 frontage.

Response: 3.5" caliper large deciduous trees have been specified along the Route 250 frontage.

8. Revise the landscape plan to shift the row of shrubs along the frontage so that it is within the parcel boundaries.

Response: The shrubs have been shifted 12" to remain clearly within the parcel.

9. Please note separate sign applications are required for all proposed signs. The following preliminary comments are provided:

a. If an illuminated wall sign is desired, external illumination is recommended.

b. Provide with the sign applications a sample of the colors proposed for the signs.

Response: A sign application will be submitted at a later date for sign permitting. Sample colors will be provided for the proposed signs.

B 10. Consider adding a landscape island along the east end of the building between the building and adjacent travel lane.

Response: Two landscape islands have been added to the east end of the building on the north and south facades. Please note we did not extend the islands into the adjacent travel aisle to avoid a pedestrian having to walk into the travel aisle to access the waiting room entrance, but have added two ornamental flowering trees and ground cover at each island.

11. Ensure that the dumpster enclosure wall height exceeds the height of the dumpster.

Response: The dumpster enclosure has been increased to 8' to ensure any size dumpster can be accommodated.



TAKE 5 OIL
CHANGE SITE

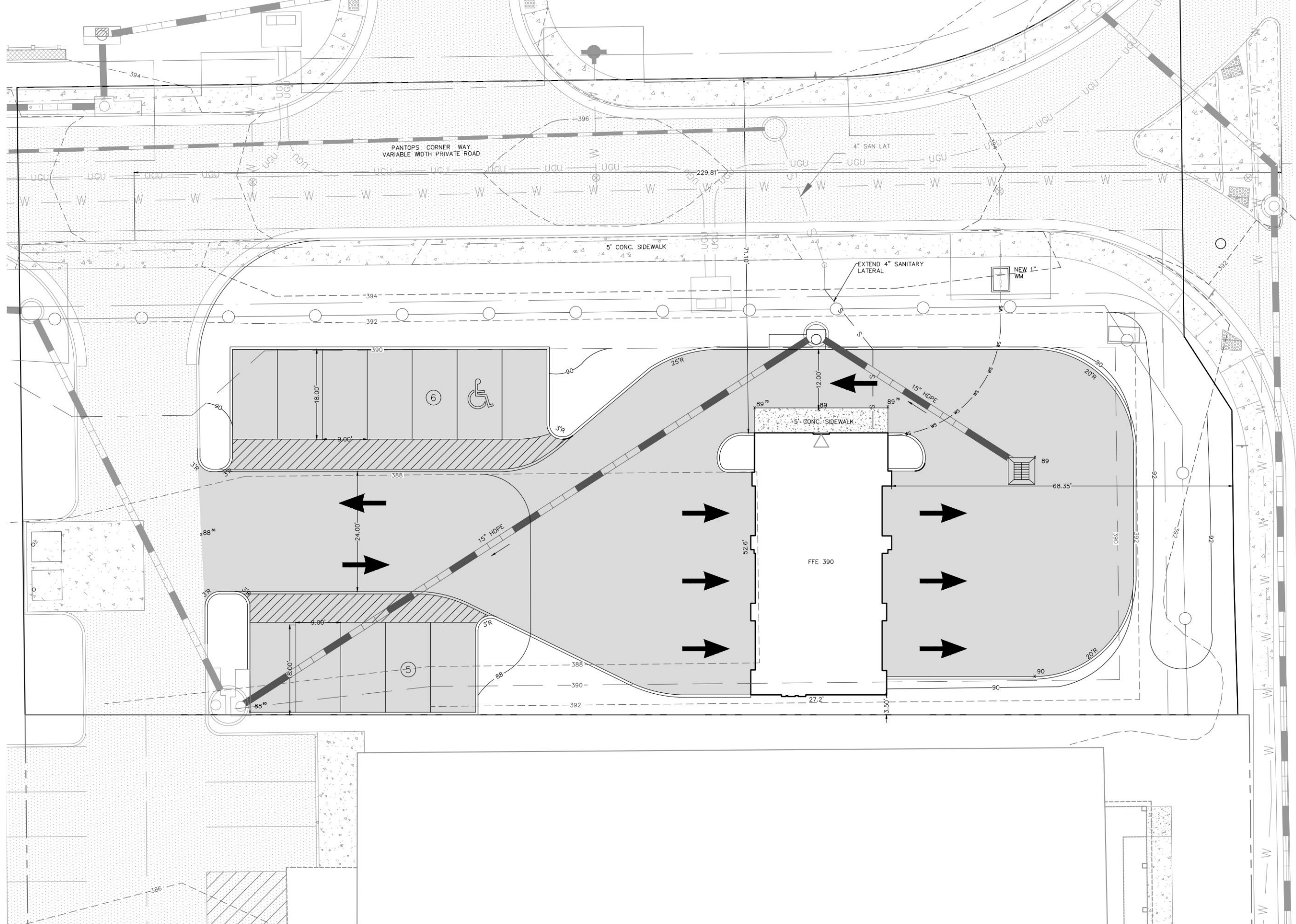


TAKE 5 OIL
CHANGE SITE

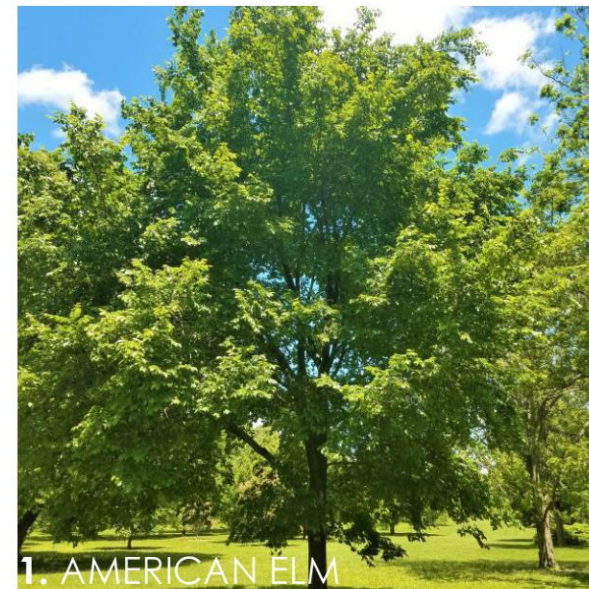








EXISTING LANDSCAPE SCHEDULE							
Plant Symbol	Planting Type	Botanical Name	Common Name	Quantity on TMP 78-5B	Total Height(ft) in 10 Yrs	Canopy SF	Canopy on TMP 78-5B
	Large Deciduous Tree	<i>Gymnocladus dioica</i>	Kentucky Coffee	2	35	570	1140
	Large Deciduous Tree	<i>Ulmus americana</i> cvs.	American Elm	3	25	397	1191
	Ornamental Tree	<i>Cercis canadensis</i>	Eastern Redbud	—	17	124	
	Ornamental Tree	<i>Cornus florida</i> 'Cherokee Princess'	Cherokee Princess Dogwood	—	17	124	
	Broadleaved Evergreen Shrub	<i>Rhododendron catawbiense</i>	Rhododendron catawba ("RC" on plans)	—	3	13	
	Broadleaved Evergreen Shrub	<i>Morella pennsylvanica</i>	Northern Bayberry ("MP" on plans)	—	6	24	
	Broadleaved Evergreen Shrub	<i>Ilex glabra</i> 'Shamrock'	Inkberry Holly 'Shamrock'	—	6	23	
	Broadleaved Evergreen Shrub	<i>Pieris floribunda</i>	Mountain Pieris	—	5	14	
	Deciduous Shrub	<i>Rhus aromatica</i> 'Gro-Low'	Rhus aromatica 'Gro-Low'	—	5	33	
						TOTAL SF	2331



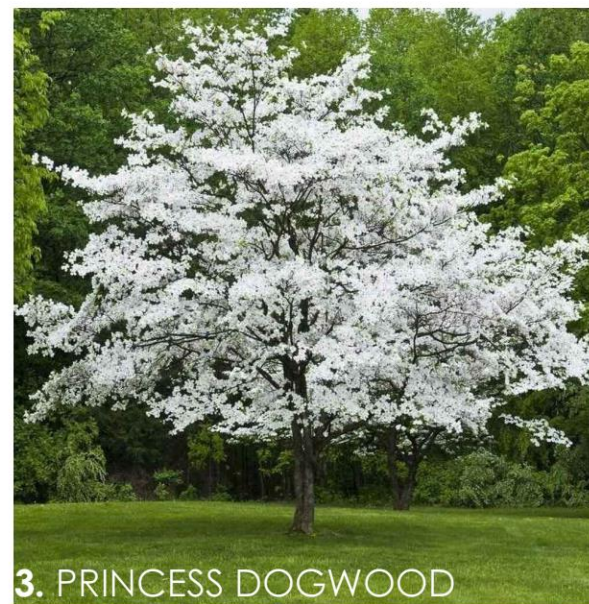
1. AMERICAN ELM



2. THORNLESS HONEYLOCUST

LARGE SHADE TREES

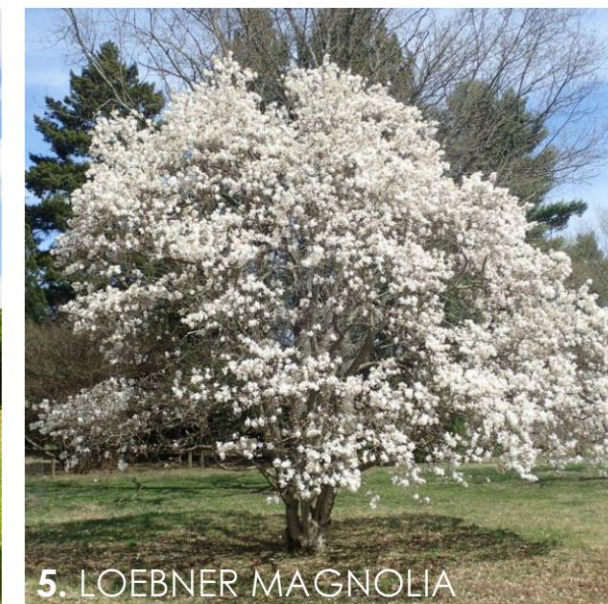
PROPOSED LANDSCAPE SCHEDULE									
Plant Symbol	Planting Type	Botanical Name	Common Name	Min. Cal./Height	Quantity	Total Height(ft) in 10 Yrs	Canopy SF	Total Canopy SF	
	Large Deciduous Tree	<i>Ulmus americana</i> cvs.	American Elm	3.5"	3	25	397	1191	
	Large Deciduous Tree	<i>Gleditsia triacanthos inermis</i>	Thornless Honeylocust	2.5"	2	31	424	848	
	Ornamental Tree	<i>Cornus florida</i> 'Cherokee Princess'	Cherokee Princess Dogwood	6-8' Ht.	2	17	124	248	
	Ornamental Tree	<i>Cornus Kousa</i>	Kousa Dogwood	6-8' Ht.	1	17	124	124	
	Ornamental Tree	<i>Magnolia stellata</i>	Star Magnolia	6-8' Ht.	2	12	49	98	
	Broadleaved Evergreen Shrub	<i>Ilex glabra</i>	Inkberry Holly	2' Ht.	58	6	23	1334	
	Broadleaved Evergreen Shrub	<i>Pieris floribunda</i>	Mountain Pieris	2' Ht.	27	5	14	378	
	Broadleaved Evergreen Shrub	<i>Rhododendron catawbiense</i>	Rhododendron catawba	24" Ht.	18	4	13	—	
	Deciduous Shrub	<i>Fothergilla gardenii</i>	Dwarf Fothergilla	12" Ht.	6	2	3	—	
								TOTAL SF	4221



3. PRINCESS DOGWOOD

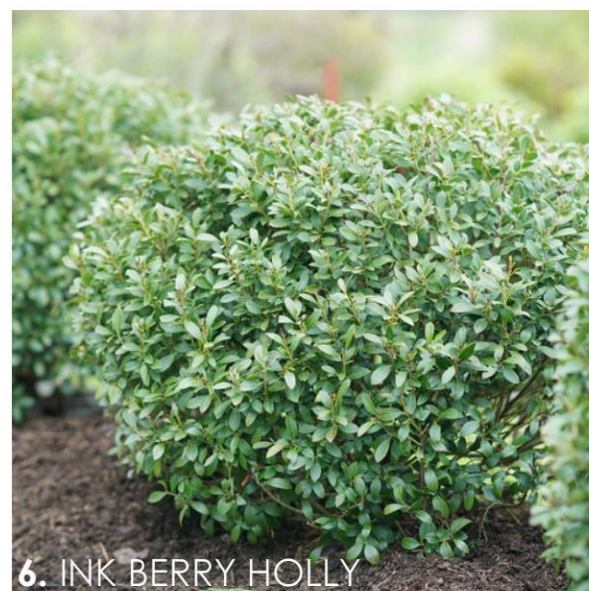


4. KOUSA DOGWOOD



5. LOEBNER MAGNOLIA

ORNAMENTAL FLOWERING TREES



6. INK BERRY HOLLY



7. MOUNTAIN PIERIS

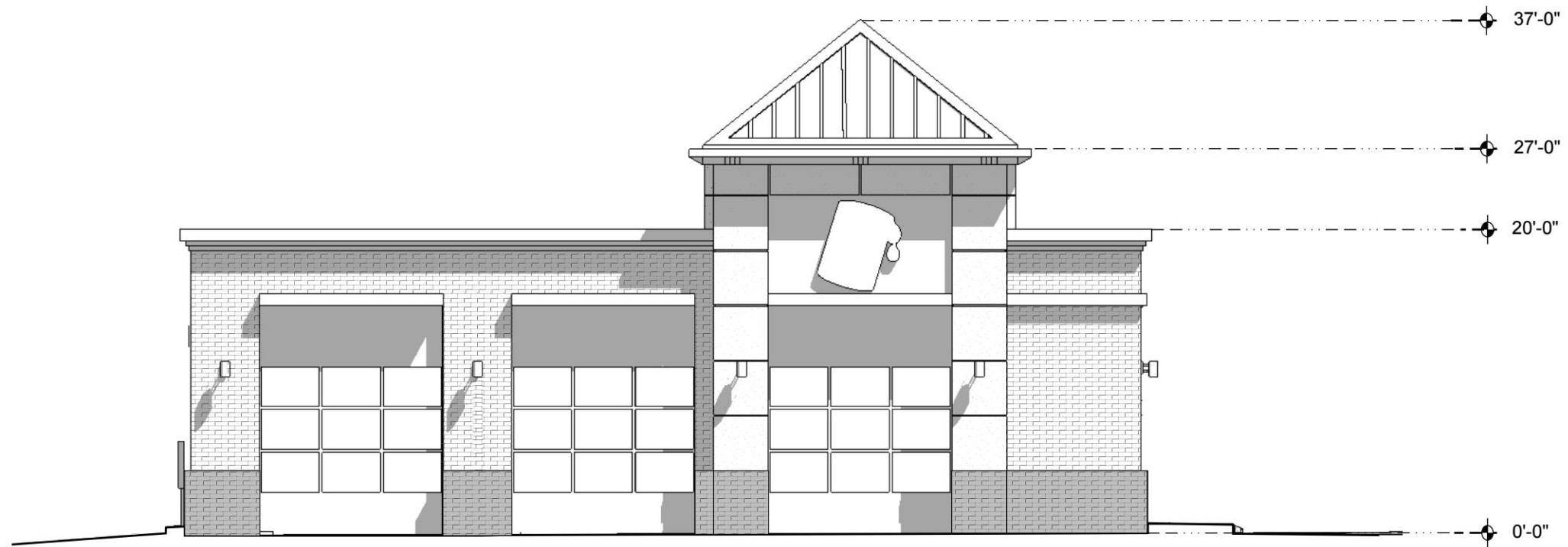


8. RHODODENDRON CATAWBA




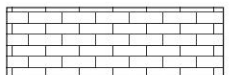
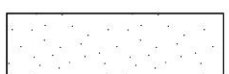


9. DWARF FOTHERGILLA

SHRUBS

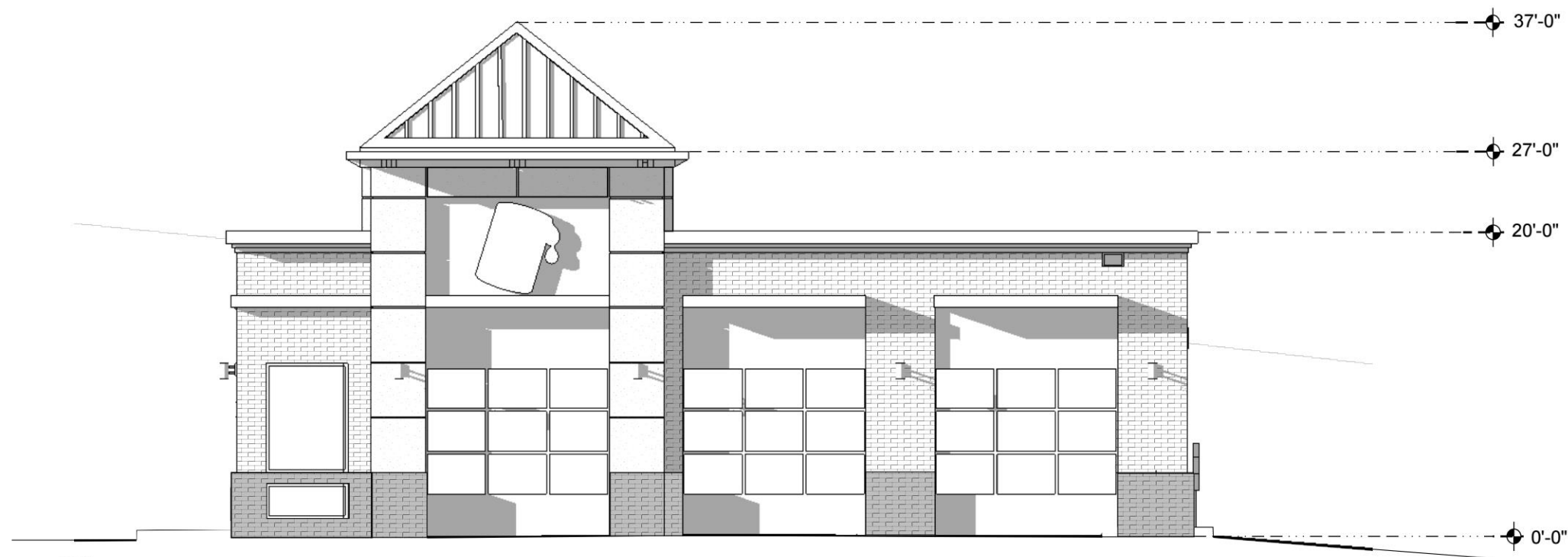


NOTES:
 1. Windows shall not be highly tinted or highly reflective. Visible light transmittance (VLT) shall not drop below 40%. Visible light reflectance (VLR) shall not exceed 30%.
 2. Visibility of all mechanical equipment from the Entrance Corridor shall be eliminated.

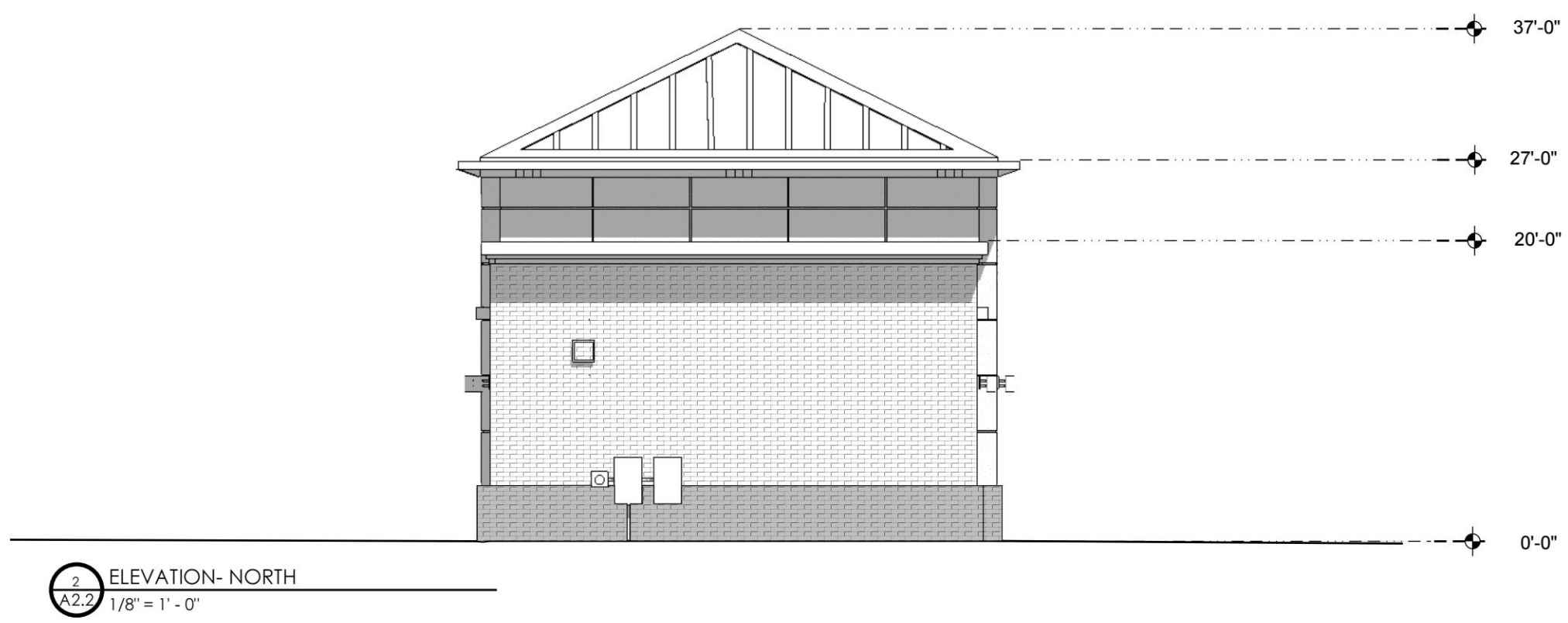
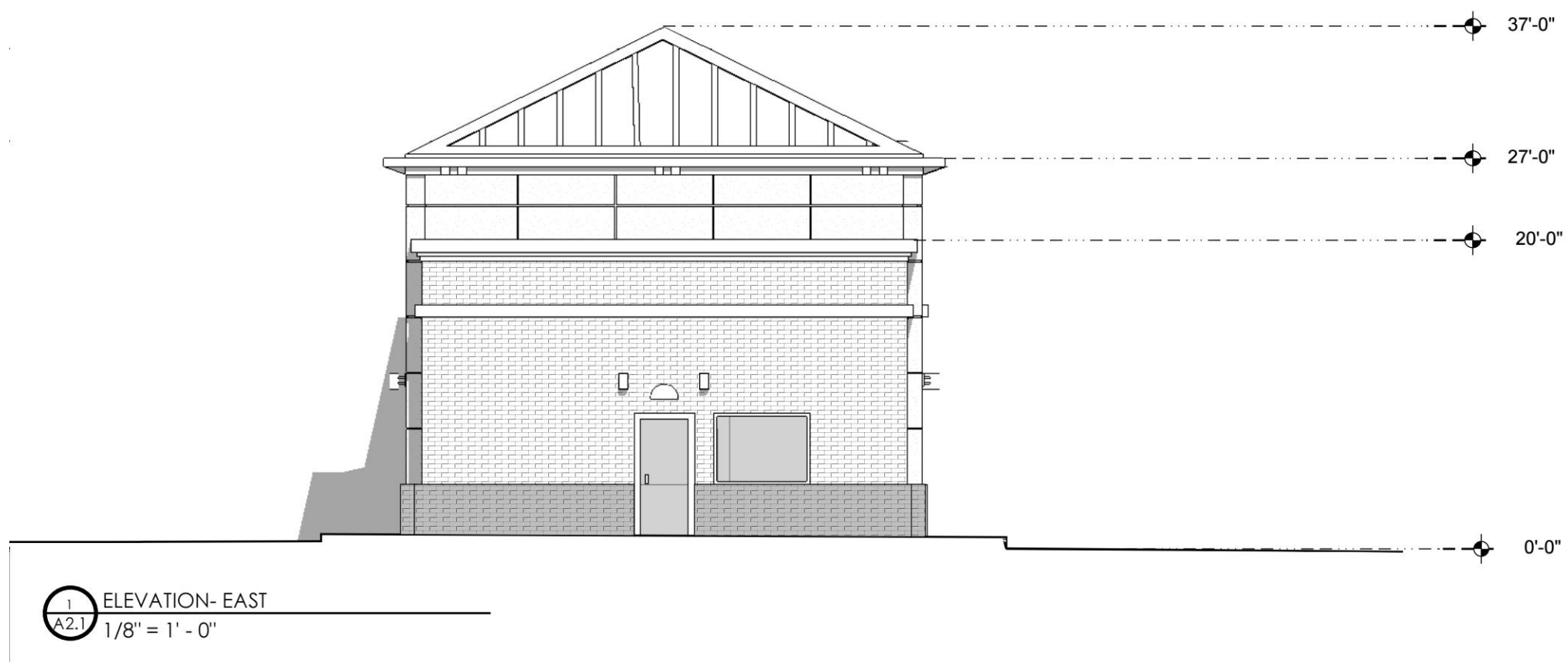
MATERIALS:

- A  GLEN-GERY UTILITY BRICK "CARBON BLACK"
- B  GLEN-GERY THIN BRICK "FELDHAUS 800 CLASSIC GRAY SMOOTH"
- C  EIFS SIDING SHERWAN WILLIAMS 7646 "FIRST STAR"
- D  BRAKE METAL TRIM, SCUPPERS, DOWNSPOUTS SHERWAN WILLIAMS 9175 "DEEP FOREST BROWN"
- E  PREFINISHED STANDING SEAM METAL ROOF COLOR TO MATCH SHERWIN WILLIAMS 7650 "ELLIE GRAY"

1 ELEVATION- SOUTH
 A2.1 1/8" = 1' - 0"



2 ELEVATION- NORTH
 A2.1 1/8" = 1' - 0"



NOTES:

1. Windows shall not be highly tinted or highly reflective. Visible light transmittance (VLT) shall not drop below 40%. Visible light reflectance (VLR) shall not exceed 30%.

2. Visibility of all mechanical equipment from the Entrance Corridor shall be eliminated.

MATERIALS:

- A  GLEN-GERY UTILITY BRICK "CARBON BLACK"
- B  GLEN-GERY THIN BRICK "FELDHAUS 800 CLASSIC GRAY SMOOTH"
- C  EIFS SIDING SHERWAN WILLIAMS 7646 "FIRST STAR"
- D  BRAKE METAL TRIM, SCUPPERS, DOWNSPOUTS SHERWAN WILLIAMS 9175 "DEEP FOREST BROWN"
- E  PREFINISHED STANDING SEAM METAL ROOF COLOR TO MATCH SHERWIN WILLIAMS 7650 "ELLIE GRAY"



PANTOPS TAKE 5 OIL CHANGE
ALBEMARLE COUNTY, VA

FRONT ELEVATION
14

ARB FINAL SUBMISSION #1
SEPTEMBER 7th, 2021



PANTOPS TAKE 5 OIL CHANGE
ALBEMARLE COUNTY, VA

REAR ELEVATION
15

ARB FINAL SUBMISSION #1
SEPTEMBER 7th, 2021



EIFS SIDING
SHERWIN WILLIAMS 7646 "FIRST STAR"



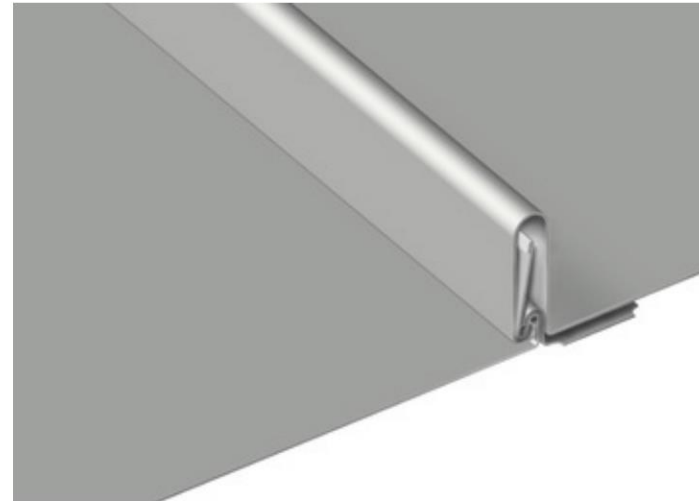
BRAKE METAL TRIM, SCUPPERS, DOWNSPOUTS
SHERWIN WILLIAM 9175 "DEEP FOREST BROWN"



GLEN-GERY THIN BRICK
"URBAN GREY"



GLEN-GERY UTILITY BRICK
"CARBON BLACK"



STANDING SEAM METAL ROOF



PREFINISHED STANDING SEAM METAL
ROOF COLOR TO MATCH SHERWIN
WILLIAM 7650 "ELLIE GRAY"



METAL ROLL UP GARAGE DOORS
WITH GLAZING



DARK BRONZE ALUMINUM STOREFRONT
(TYP.)



PANTOPS TAKE 5 OIL CHANGE
ALBEMARLE COUNTY, VA

INTERIOR DRIVE PERSPECTIVE
17

ARB FINAL SUBMISSION #1
SEPTEMBER 7th, 2021



8' TALL CMU DUMPSTER ENCLOSURE CLAD
 IN GLEN-GERY THIN BRICK "FELDHAUS 800
 CLASSIC GRAY SMOOTH" WITH WORKRITE
 MORTAR IN "WR-2055 GRAVEL"



HORIZONTAL, COMPOSITE BOARD DOORS TO BE
 PAINTED SHERWIN WILLIAMS 9175 "DEEP FOREST
 BROWN" TO MATCH BUILDING TRIM AND INSTALLED
 ON STEEL POST HINGES.



● NOTE: A PACKAGED TERMINAL AIR CONDITIONER (PTAC) IS A TYPE OF SELF CONTAINED HEATING AND AIR CONDITIONING SYSTEM. THIS IS THE ONLY MECHANICAL EQUIPMENT ON SITE.

1. SELUX - POST TOP LUMINAIRE



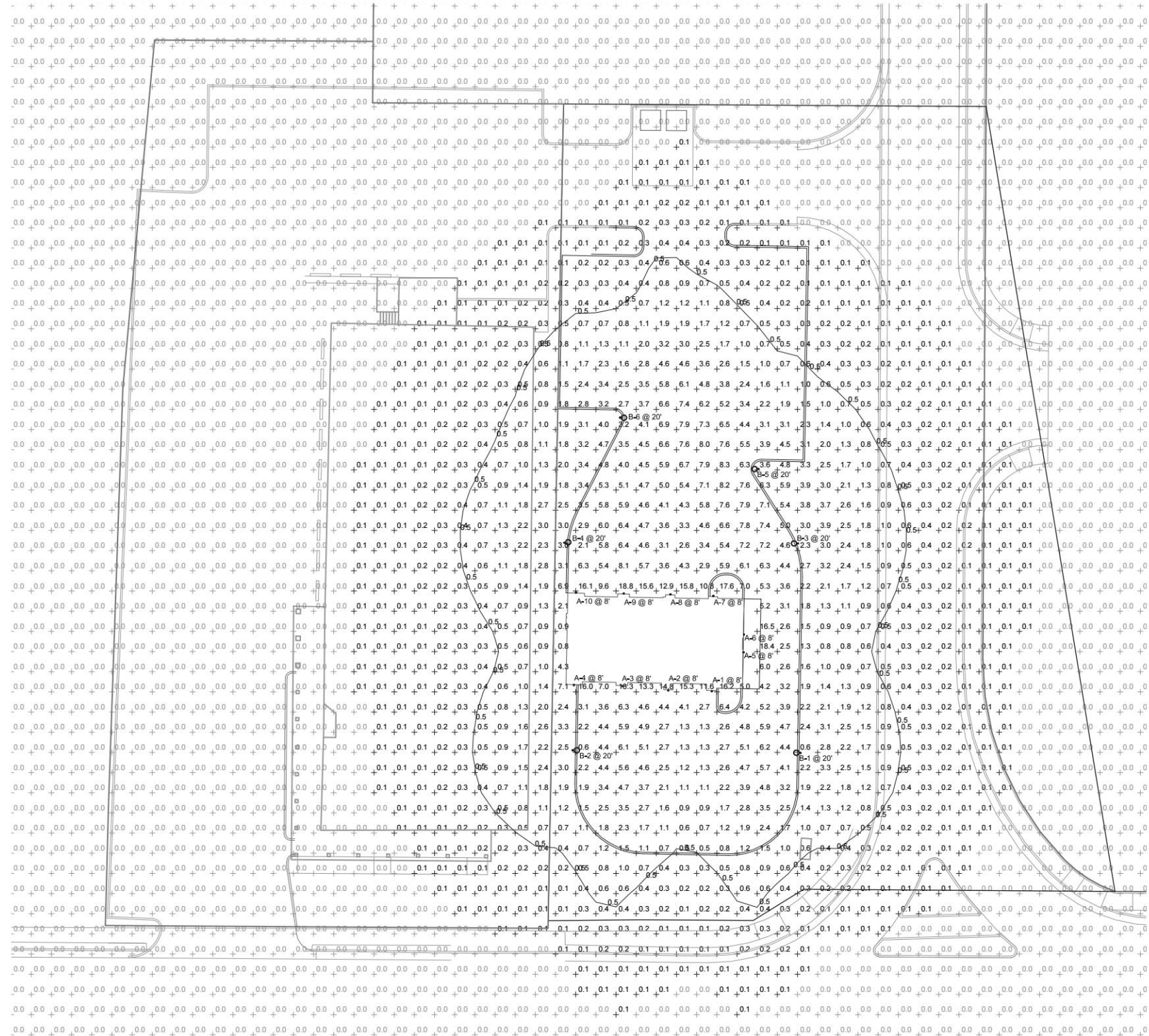
2. PRESCOLITE "LITEISTRY" 4" ROUND CYLINDER DOWNLIGHT

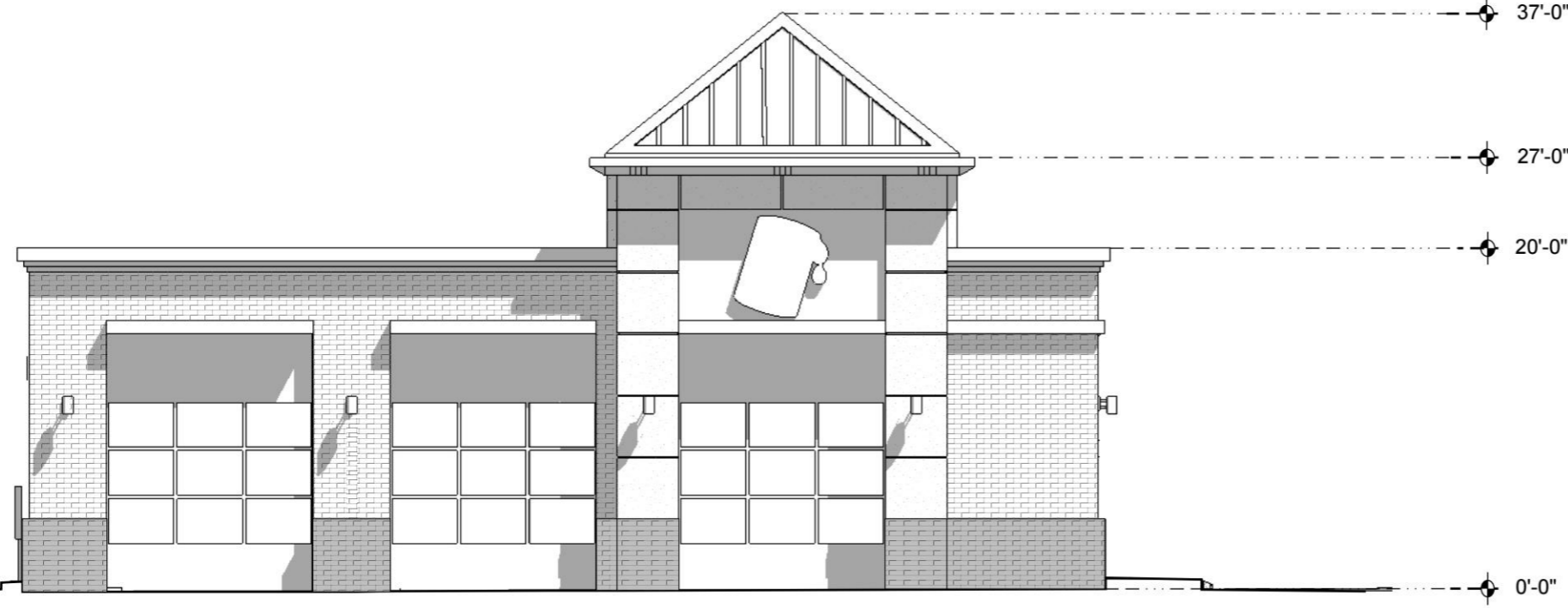


Symbol	Label	Quantity	Manufacturer	Catalog Number	Description	Lamp	Filename	Number of Lamps	Lumens Per Lamp	Light Loss Factor	Wattage
○	A	10	PRESCOLITE	LTC-4RD-P-15L35K8XW-DM1-S-BL	4" LITEISTRY Round Cylinder, 1500 lumens, 3000K, 80+ CRI, Extra Wide, Specular Clear	3000K, 80+CRI LED	LTC-4RD-P-15L35K8XW-DM1-S-BL.ies	1	Absolute	1.00	18.6
⦿	B	6	Selux Corporation	ASTx-R1-X-5G105-30-XX-XX-UNV	Formed gray aluminum housing, on board optics, clear glass lens enclosure	7 White LEDs	ASTx-R1-X-5G105-30-XX-XX-UNV.ies	1	Absolute	1.00	95.0

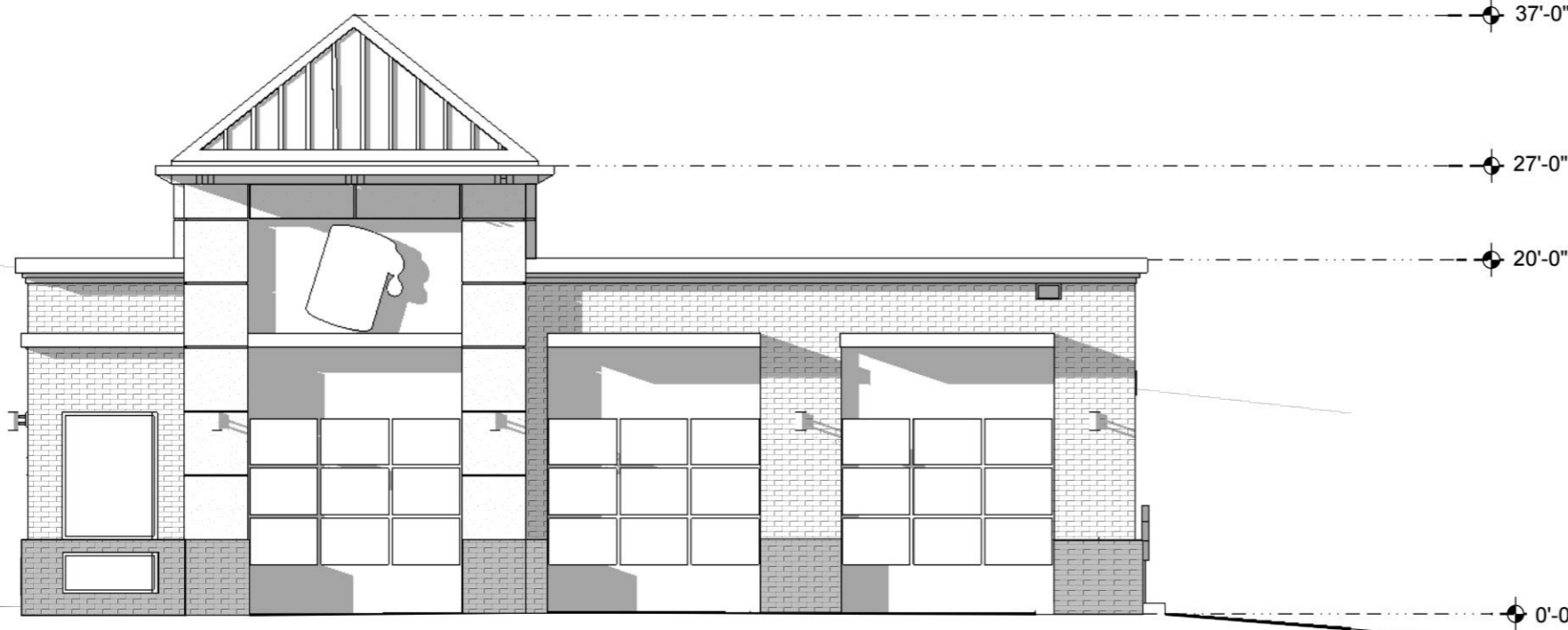
LIGHTING NOTES:

- Each outdoor luminaire equipped with a lamp that emits 3,000 or more initial lumens shall be a full cutoff luminaire and shall be arranged or shielded to reflect light away from adjoining residential districts and away from adjacent roads. The spillover of lighting from luminaires onto public roads and property in residential or rural areas zoning districts shall not exceed one half footcandle.
- "A" fixtures shall be mounted at a height of 8'.
- "B" fixtures shall be mounted at a height of 20' (18' pole).
- "A" and "B" fixtures shall have a matte black finish.
- "A" and "B" fixtures shall have a CCT of 3000K.





1 ELEVATION- SOUTH
 A2.1 1/8" = 1' - 0"

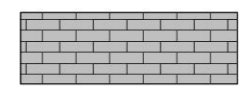
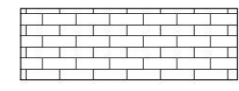

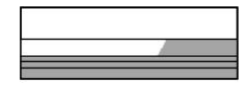



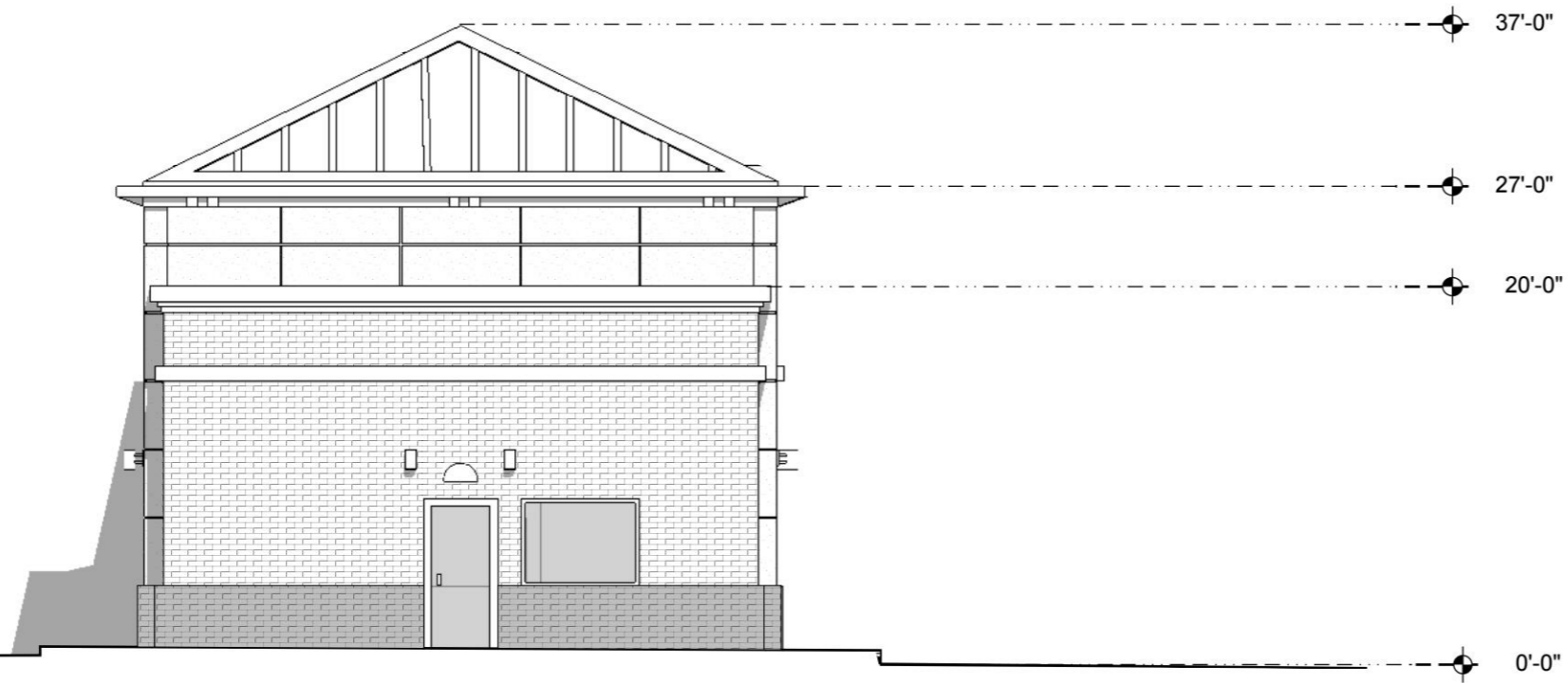
2 ELEVATION- NORTH
 A2.1 1/8" = 1' - 0"

NOTES:

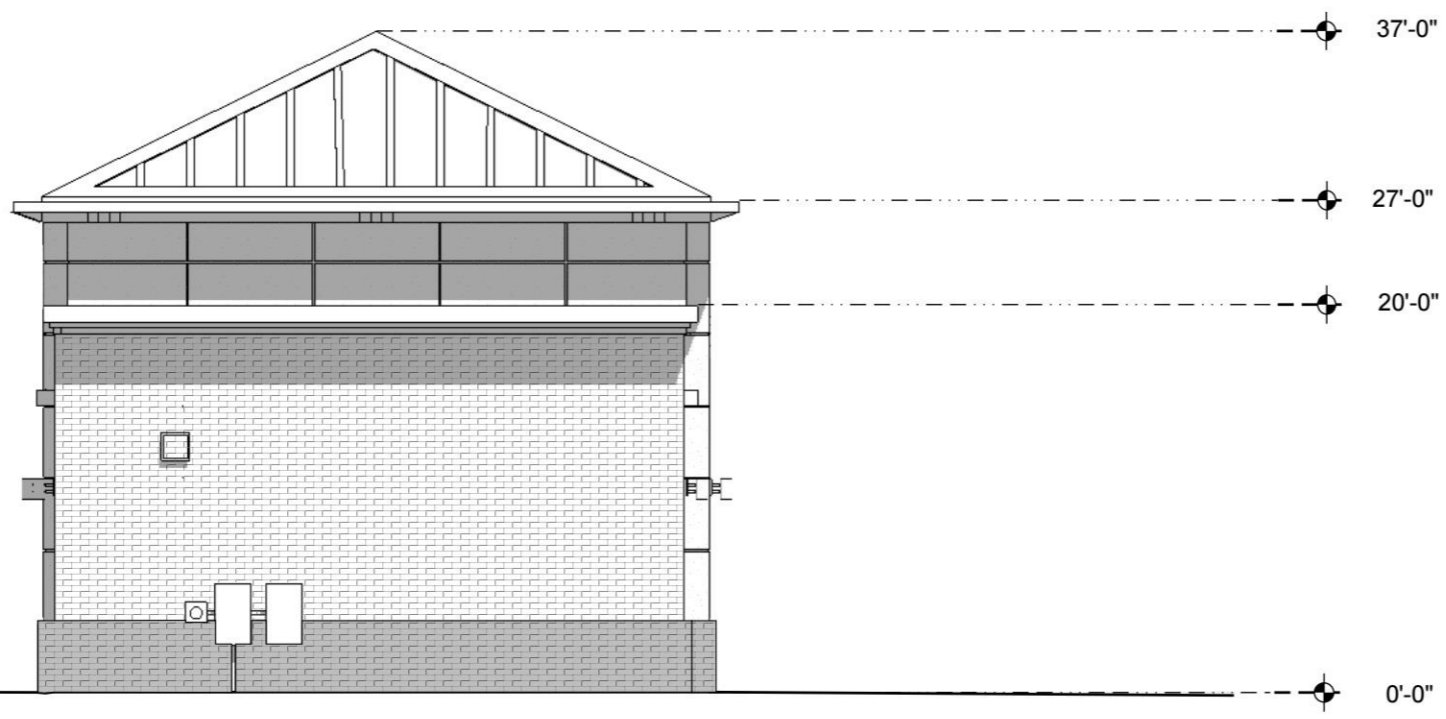
1. Windows shall not be highly tinted or highly reflective. Visible light transmittance (VLT) shall not drop below 40%. Visible light reflectance (VLR) shall not exceed 30%.
2. Visibility of all mechanical equipment from the Entrance Corridor shall be eliminated.

MATERIALS:

- A  GLEN-GERY UTILITY BRICK "CARBON BLACK"
- B  GLEN-GERY THIN BRICK "FELDHAUS 800 CLASSIC GRAY SMOOTH"
- C  EIFS SIDING SHERWAN WILLIAMS 7646 "FIRST STAR"
- D  BRAKE METAL TRIM, SCUPPERS, DOWNSPOUTS SHERWAN WILLIAMS 9175 "DEEP FOREST BROWN"
- E  PREFINISHED STANDING SEAM METAL ROOF COLOR TO MATCH SHERWIN WILLIAMS 7650 "ELLIE GRAY"



1 ELEVATION- EAST
A2.1 1/8" = 1' - 0"



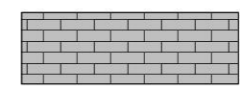
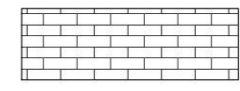
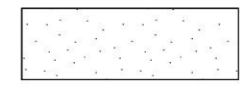


2 ELEVATION- NORTH
A2.2 1/8" = 1' - 0"

NOTES:

1. Windows shall not be highly tinted or highly reflective. Visible light transmittance (VLT) shall not drop below 40%. Visible light reflectance (VLR) shall not exceed 30%.

2. Visibility of all mechanical equipment from the Entrance Corridor shall be eliminated.

MATERIALS:

- A  GLEN-GERY UTILITY BRICK "CARBON BLACK"
- B  GLEN-GERY THIN BRICK "FELDHAUS 800 CLASSIC GRAY SMOOTH"
- C  EIFS SIDING SHERWAN WILLIAMS 7646 "FIRST STAR"
- D  BRAKE METAL TRIM, SCUPPERS, DOWNSPOUTS SHERWAN WILLIAMS 9175 "DEEP FOREST BROWN"
- E  PREFINISHED STANDING SEAM METAL ROOF COLOR TO MATCH SHERWIN WILLIAMS 7650 "ELLIE GRAY"