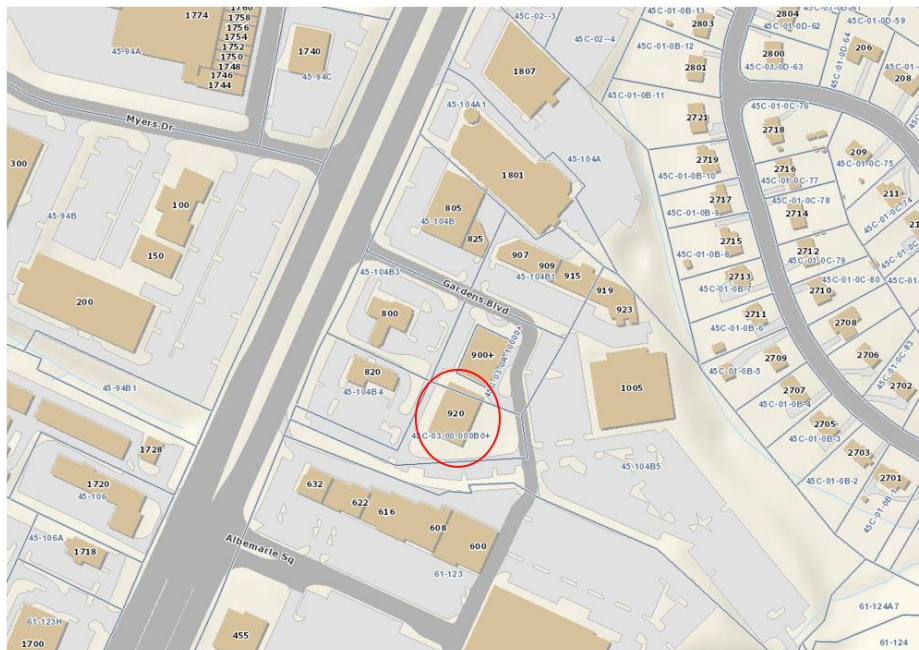


ARB COMPREHENSIVE SIGN REVIEW APPROVED CONDITIONS

PROJECT #/NAME: ARB-2006-138: 920 Gardens Blvd. (a.k.a. 1010 Gardens, Hamrick Phase 2, Spee Dee Oil)
TAX MAP/PARCEL#: 045C0-03-00-000B0 (See map, below.)

SIGN FEATURE	APPROVED CONDITION	NOTES
SIGN TYPE	Letters mounted individually on the wall; or letters mounted individually on a panel, and the panel mounted on the wall	
LETTER FACE COLOR	Brass, bronze , black, dark brown or “gold”	
CABINET/PANEL FACE COLORS	Panel color shall be compatible with letter color and wall color.	
SIZE LIMITATIONS	Standard guidelines apply.	
LOCATION(S)	In sign panels illustrated on ARB-approved building elevations.	
LOGO/GRAPHICS DETAILS	Standard guidelines apply	
ILLUMINATION DETAILS	Lighting for signs shall be limited to minimal building mounted lighting (maximum tow fixtures per sign) shining down on the letters.	Fixtures must meet ordinance requirements.
TEXT	Not specified.	
LETTER TYPE/FONT	Not specified.	
MATERIALS	Panel material shall be coordinated with the letter material and the building materials.	

This form outlines the specific design criteria established for signs at this location. All standard ARB Sign Guidelines also apply.



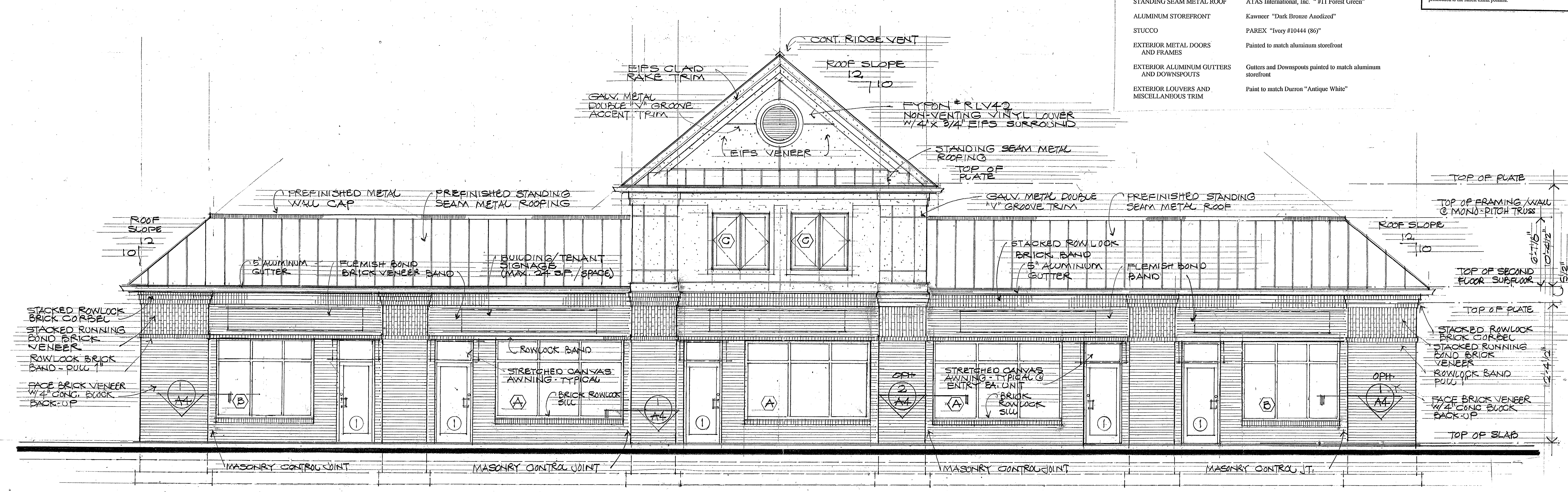
Color Selections

EXTERIOR FACE BRICK	Old Virginia "Monticello" Engineer Size
MORTAR	Standard gray, concave toothing
STANDING SEAM METAL ROOF	ATAS International, Inc. " #11 Forest Green"
ALUMINUM STOREFRONT	Kawneer "Dark Bronze Anodized"
STUCCO	PAREX "Ivory #10444 (86)"
EXTERIOR METAL DOORS AND FRAMES	Painted to match aluminum storefront
EXTERIOR ALUMINUM GUTTERS AND DOWNSPOUTS	Gutters and Downspouts painted to match aluminum storefront
EXTERIOR LOUVERS AND MISCELLANEOUS TRIM	Paint to match Durrant "Antique White"

COPYRIGHT PROTECTION WARNING 2007
This Drawing and the Design contained herein are the property of RLG Architects, PLLC and are to be used solely for the project or client whose name appears in the title block of this drawing. Authorization to reproduce, transmit or otherwise communicate any portion of this design must be in writing from the Architect. This drawing and design contained herein shall not be assigned to any third party without the express written permission of RLG Architects, PLLC or Robert L. Gentry, Architect. Unauthorized reproduction, transmission, communication or use of this drawing violates the exclusive rights to this design and will result in prosecution to the fullest extent possible.

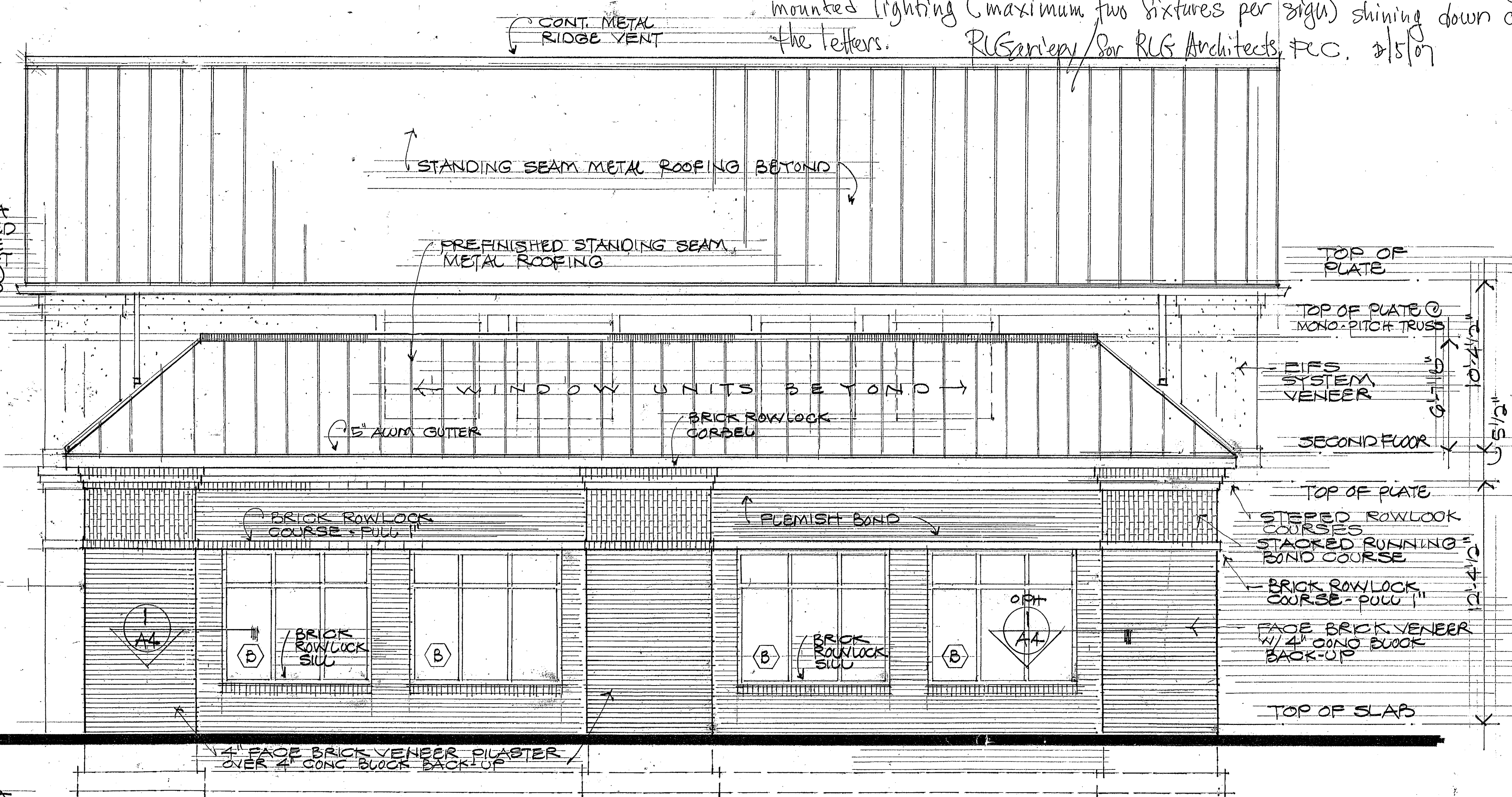
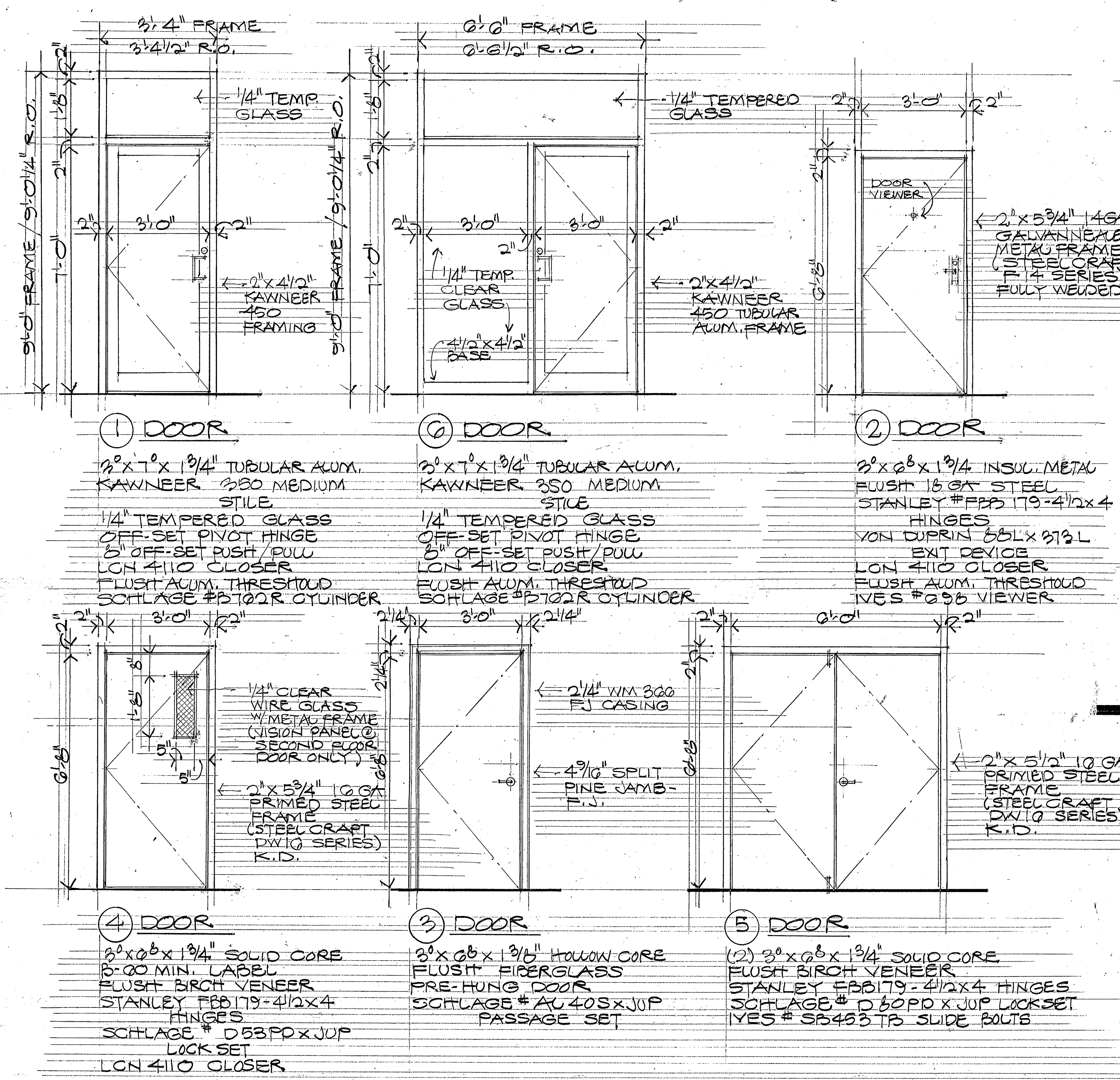
Date: 11/15/06 Prelim.
1/30/07 Final

RLG Architects, PLLC
Architecture
Construction
Development
1110 East Market
Suite 3R
Charlottesville, VA
434.245.9535



FRONT ELEVATION 1/4" = 1'-0"

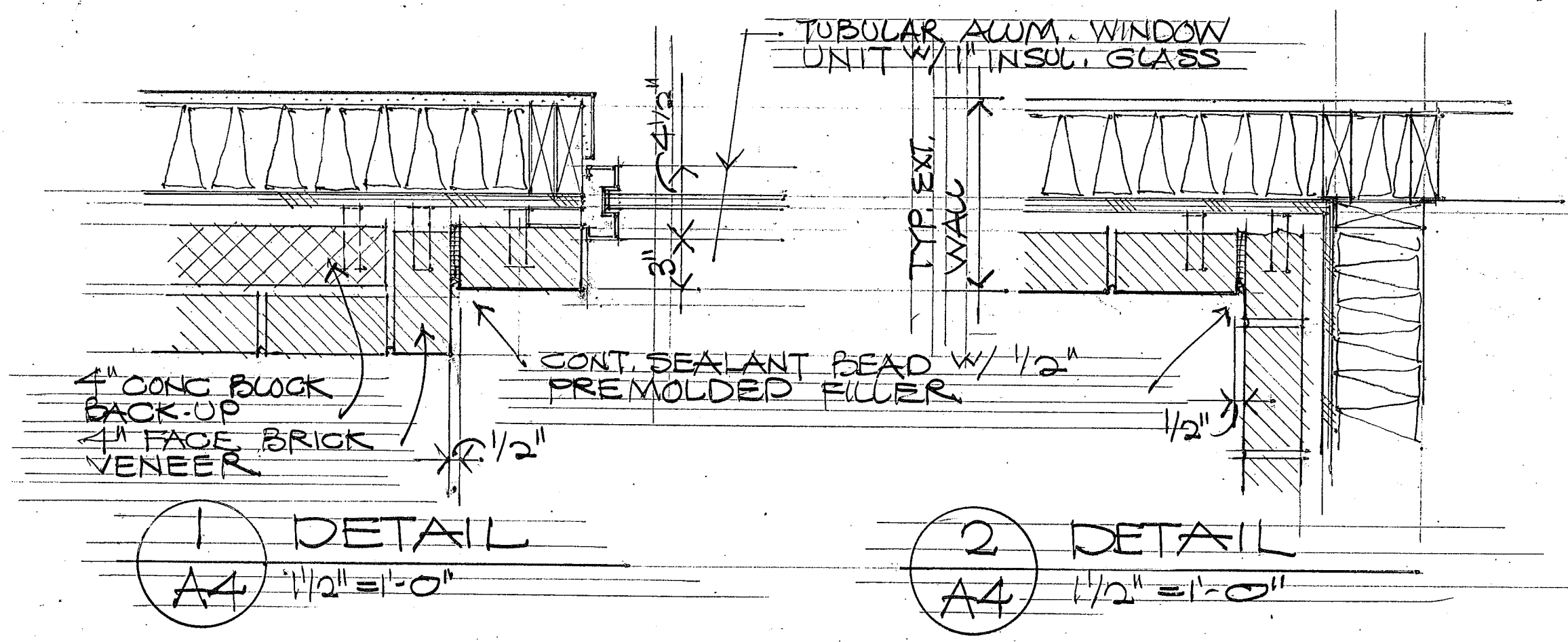
Wall signs shall be limited to brass, bronze, black, dark brown, or "gold" letters individually mounted or mounted on panels, with panel material and color coordinated with the letters and building materials. Lighting for signs shall be limited to minimal building mounted lighting (maximum two fixtures per sign) shining down on the letters. RLGentry, for RLG Architects, P.C. 2/5/07



RIGHT SIDE ELEVATION 1/4" = 1'-0"

A NEW RETAIL BUILDING
at THE GARDENS SHOPPING CENTER
1010 Gardens Boulevard, Albemarle County, Virginia

drawing:
scale:
sheet: **A3**

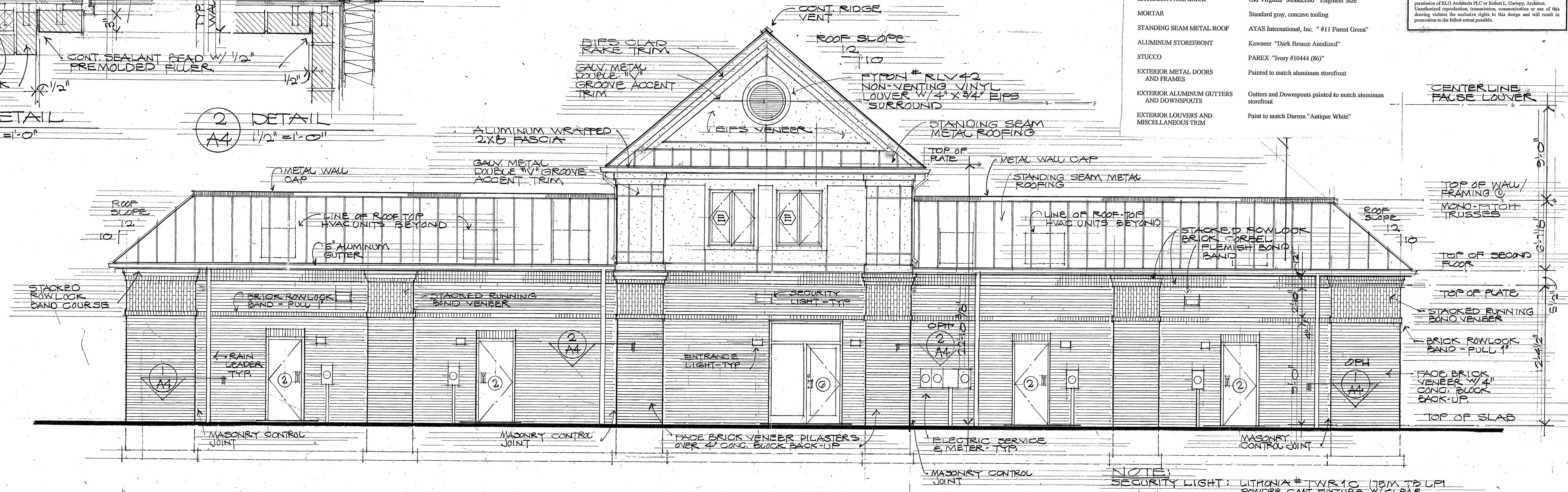


Color Selections

EXTERIOR FACE BRICK	Old Virginia "Monticello" Engineer Size
MORTAR	Standard gray, concave tooling
STANDING SEAM METAL ROOF	ATAS International, Inc. " #11 Forest Green"
ALUMINUM STOREFRONT	Kawneer "Dark Bronze Anodized"
STUCCO	PAREX "Ivory #10444 (86)"
EXTERIOR METAL DOORS AND FRAMES	Painted to match aluminum storefront
EXTERIOR ALUMINUM GUTTERS AND DOWNSPOUTS	Gutters and Downspouts painted to match aluminum storefront
EXTERIOR LOUVERS AND MISCELLANEOUS TRIM	Paint to match Duron "Antique White"

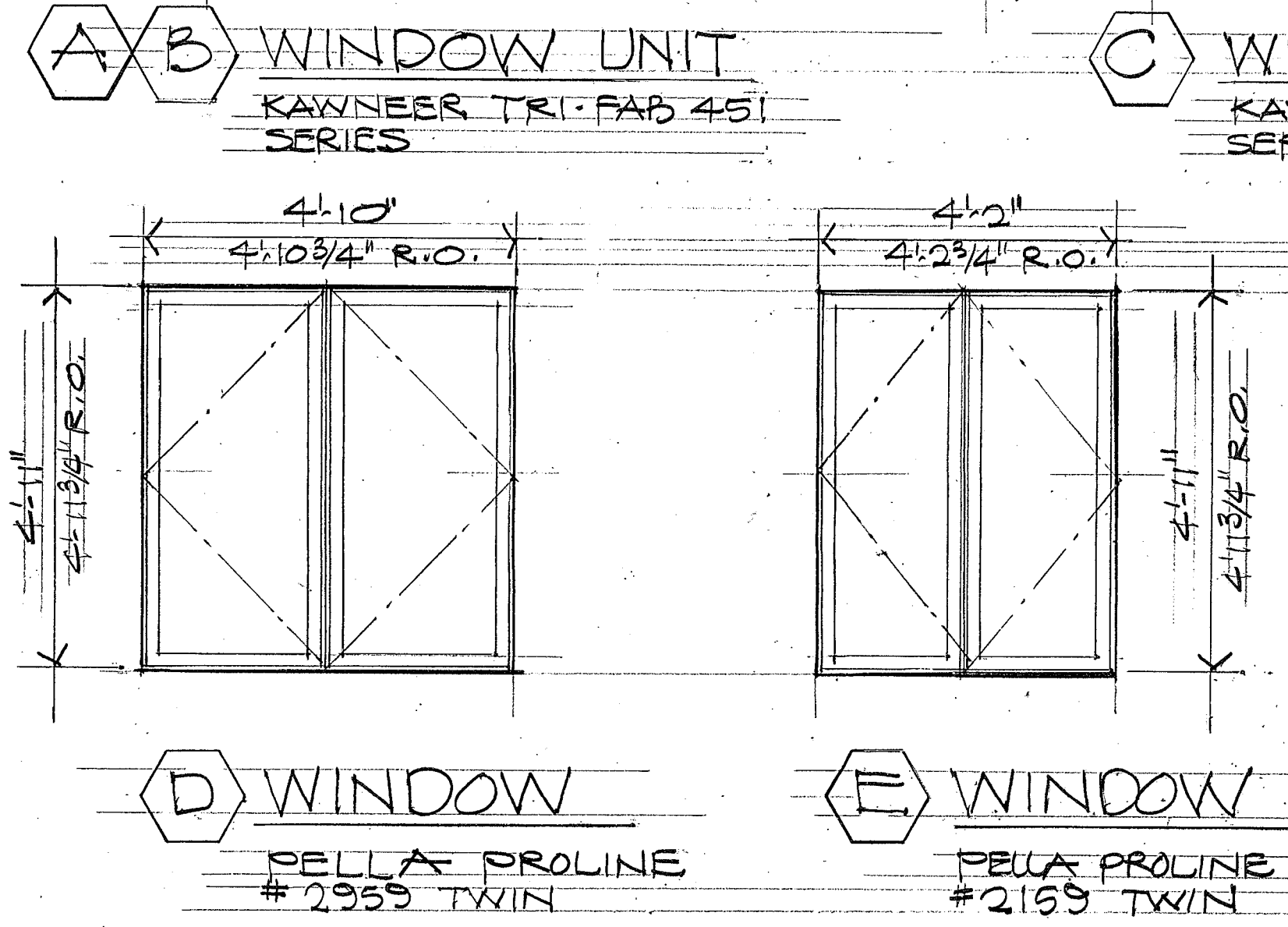
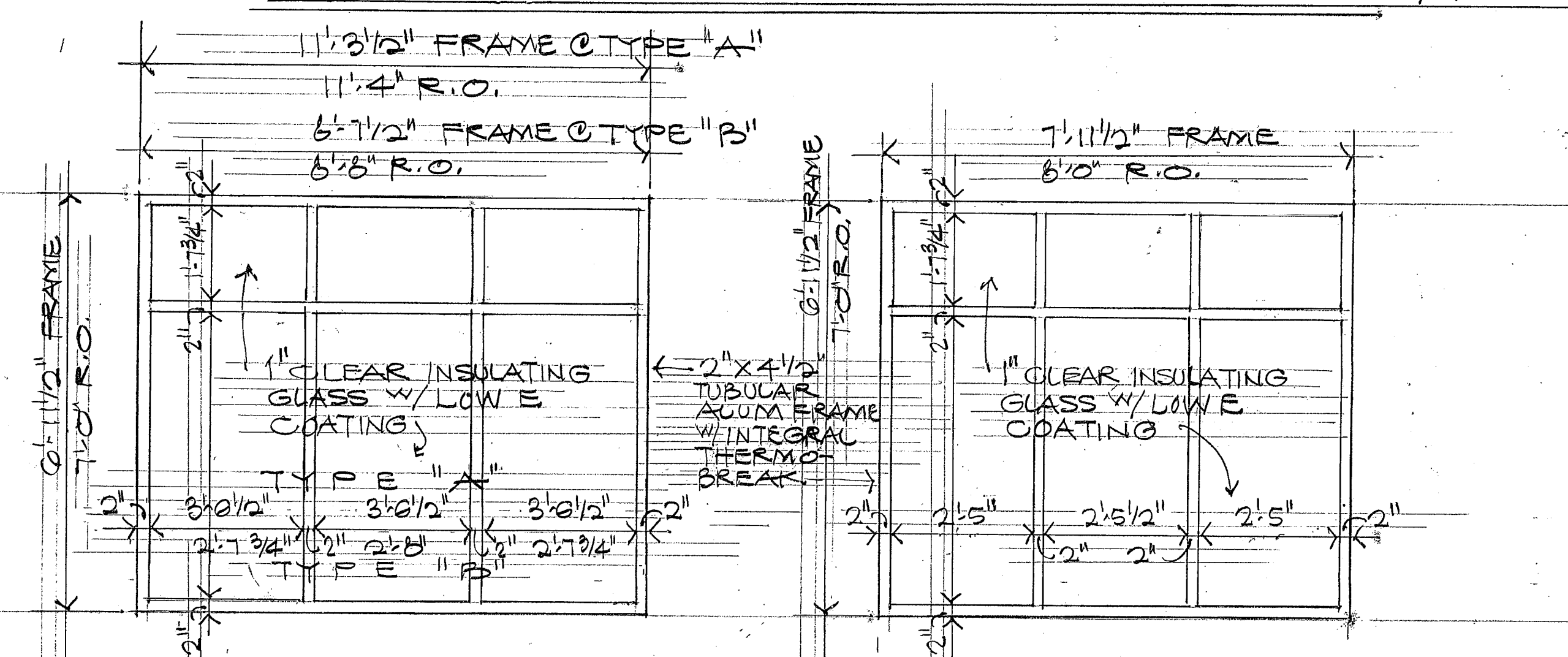
COPYRIGHT PROTECTION WARNING 2007
This Drawing and the Designs contained herein are the property of RLG Architects, PLLC and are to be used solely for the project or client whose name appears in the title block of this drawing. Authorization to reproduce, transmit or otherwise communicate any portion of this design must be in writing from the Architect. This drawing and design contained herein shall not be assigned to any third party without the express written permission of RLG Architects, PLLC or Robert L. Gregory, Architect. Unauthorized reproduction, transmission, communication or use of this drawing violates the exclusive rights to this design and will result in prosecution to the fullest extent possible.

Date: 11/15/06 Prelim.
11/20/07 Final

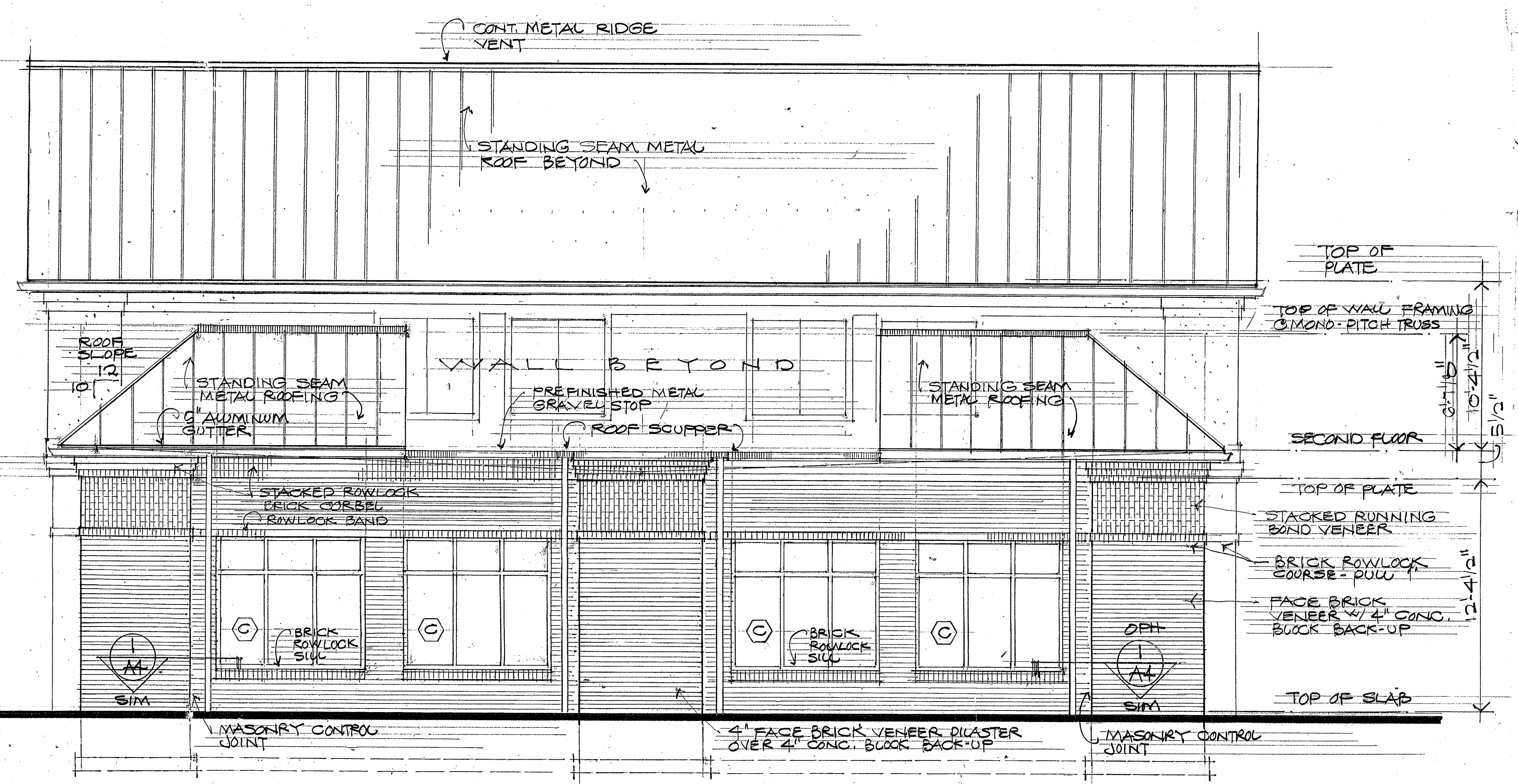


REAR ELEVATION 1/4" = 1'-0"

NOTE:
SECURITY LIGHT: LITHONIA # TWR 10 100M TB LPI POWDER COAT FIXTURE W/ CLEAR PRISMATIC LENS
ENTRANCE LIGHT: LITHONIA # YR 2 BH 13 DTT 100 SOB LPI POWDER COAT FIXTURE W/ CLEAR PRISMATIC LENS.



WINDOW TYPES 1/2" = 1'-0"



LEFT SIDE ELEVATION 1/4" = 1'-0"

RLG
Architects, PLLC

Architecture
Construction
Development

1110 East Market
Suite 3R
Charlottesville, VA
434.245.9535

A NEW RETAIL BUILDING
at THE GARDENS SHOPPING CENTER
1010 Gardens Boulevard, Albemarle County, Virginia

drawing:
scale:
sheet:
A4