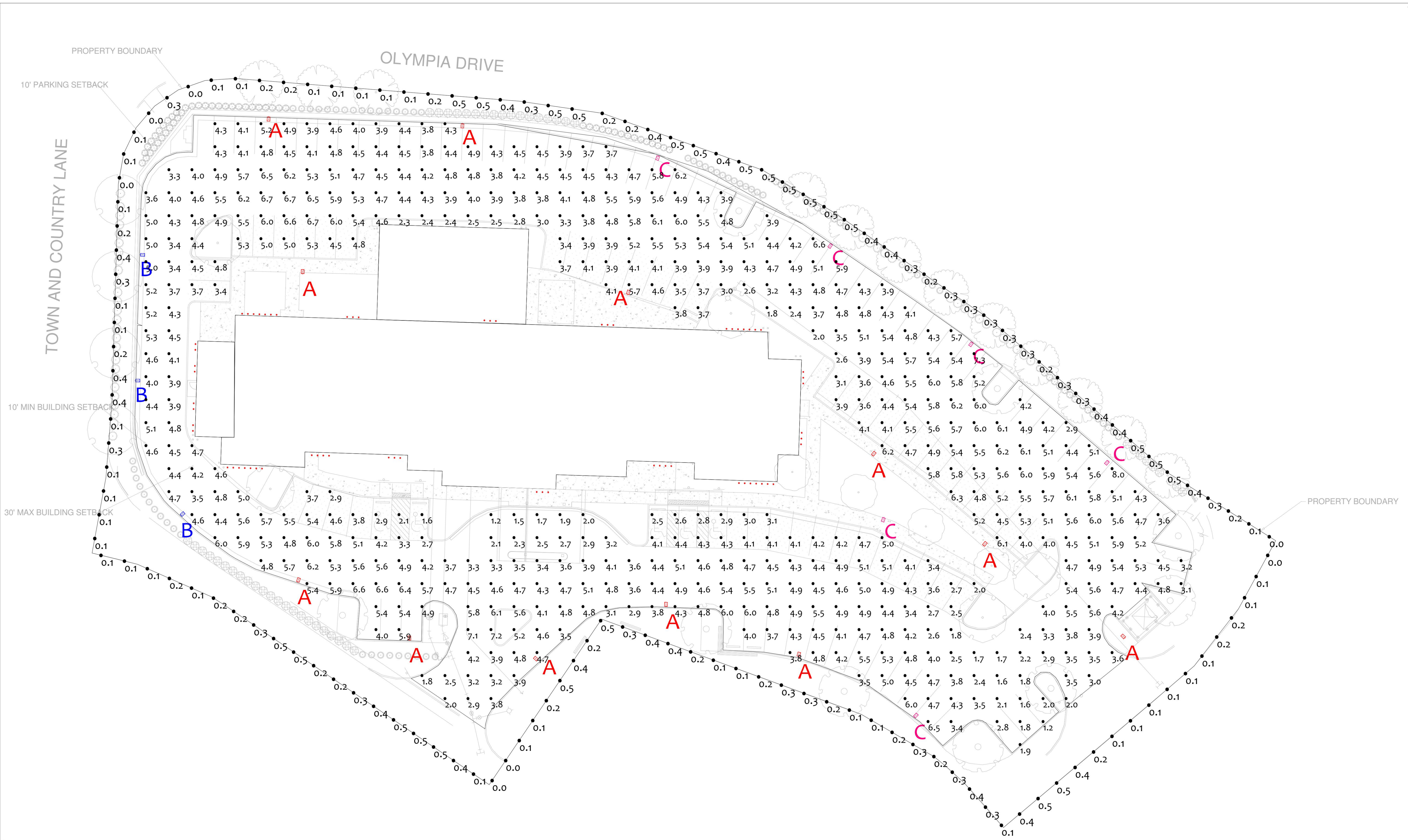


#	Date	Comments
Revisions		

Drawn By: REASOR  
 Checked By:  
 Date: 6/17/2022  
 Scale: 1" = 20'-0"

**TOWNEPLACE INN**



Tag	Symbol	Qty	[MANUFAC]	Label
A		12	COOPER LIGHTING SOLUTIONS - MCGRAW-EDISON (FORMERLY EATON)	GLEON-SA3D-740-U-T4W-HSS
B		3	COOPER LIGHTING SOLUTIONS - MCGRAW-EDISON (FORMERLY EATON)	GLEON-SA2D-740-U-T4FT-HSS
C		6	COOPER LIGHTING SOLUTIONS - MCGRAW-EDISON (FORMERLY EATON)	GLEON-SA2D-740-U-SL3-HSS
		65	U.S.T.E. DBA VISTA PROFESSIONAL OUTDOOR LIGHTING	1057-NS-A-30

Label	Units	Avg	Max	Min	Avg/Min	Max/Min
Parking and roadway	Fc	4.43	8.0	1.2	3.69	6.67
Property Line	Fc	0.26	0.5	0.0	N.A.	N.A.

**ADD UPLIGHTING**  
**6-17-22**







**PROFESSIONAL**  
OUTDOOR LIGHTING

Type:

Model:

Project:

## SPECIFICATION SHEET

### MODEL 1057 Architectural Series • Up & Accent

#### FIXTURE SPECIFICATIONS:

##### DOOR:

Die-cast, low copper content, A360 aluminum offers maximum corrosion protection. Captive stainless steel fasteners affixed to a minimalistic styled door. Door is designed to shed water from the lens surface.

##### HOUSING:

Die-cast A360 aluminum. Optic and driver compartment separately sealed while being electrically connected. Housing aiming achieved via a heavy aluminum yoke strap and locked in position with stainless steel lock washers and nuts. Locking fasteners are covered with decorative die-cast aluminum end caps.

##### FINISH:

Durable powder coat finish available in Black, Architectural Bronze, Dark Bronze, Granite, White, Architectural Brick, Light Bronze, Special Bronze, Glossy Gray, Rust, Hunter Green, Weathered Bronze, Weathered Iron, Graphite Metallic, Verde, Pewter, Mocha and Olde Finish. Custom Powder coat finishes available on request.

##### LED:

Cree® CXA 1830 COB driven at 450mA, 700mA, or 900mA.

Luminus® CGM-14 COB driven at 1050mA, 1200mA, or 1400mA.

##### CRI:

The CRI range is 82-83.

##### COLOR TEMPERATURE:

LED's are offered in 2700°K, 3000°K, 3500°K, or 4000°K or 5000°K CCT (ANSI white 4 step Cree® Easy White™ bins)

Luminus LED are offered in 3000°K, 3500°K, or 4000°K CCT

(ANSI white 3 step)

##### LIGHT DISTRIBUTION:

Very Narrow Spot **VNS** (NEMA 2x2), Narrow Spot **NS** (NEMA 2x2), Medium Flood **MF** (NEMA 4x4), and Wide Flood **WF** (NEMA 6x6).

##### REFLECTOR:

High-purity anodized specular or semi-specular aluminum optics designed for maximum performance and uniformity. Very Narrow Spot **VNS** optic incorporates an internal source shield to eliminate unwanted glare outside the beam pattern.

##### LENS/SEAL:

3/16" thick tempered and seamed clear glass sealed with a closed cell molded silicone gasket.

##### WIRING:

3 foot 18/3 outdoor-rated hard usage cable standard for non-dimming **ND** fixtures. 3 foot 18/5 outdoor-rated hard usage cable standard for dimming **010**. Cable exits fixture housing through a liquid tight cable fitting.

##### DRIVER:

Integral CUL listed LED driver, either non-dimmable **ND** or dimmable. Dimming: 0-10VDC **010**. (all models). **PCT** (TRIAC/ELV) dimming available for power levels D,E,F. Multi-Volt **MV** 120V-277V driver input standard.

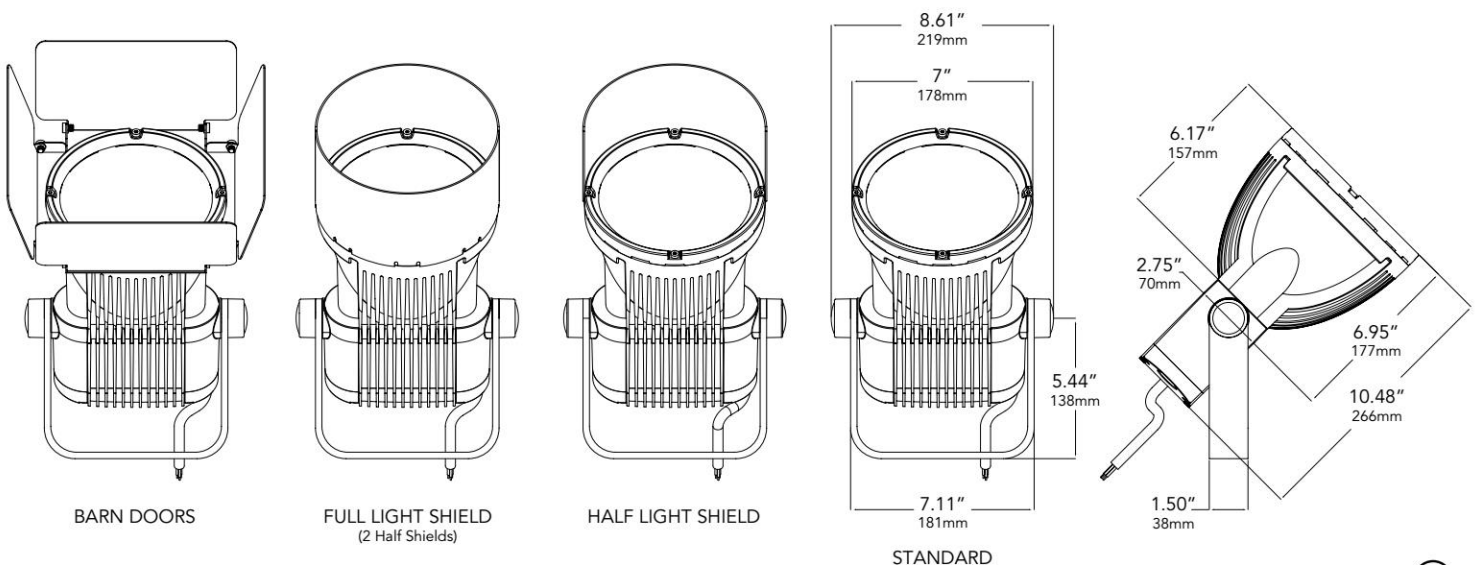
##### ACCESSORIES:

**DF** - Diffuse Filter, **LSFH**- Linear Spread Filter Horizontal, **LSFV**- Linear Spread Filter Vertical, **BD**- Barn Doors, **FS**- Full Shield, and **HS**- Half Shield available. **BD**, **FS** and **HS** accessories are attached into pre-existing slots located on the underside of the fixture door providing for a fastener free appearance.

##### MOUNTING:

Ground, wall, or ceiling mounted on a heavy aluminum yoke strap including a heavy-duty liquid tight corrosion resistant cord seal. Addition mounting holes provided in the yoke strap; fasteners by others. Please see the Vista Pro website for additional stanchion mount, wall box, and recessed box mounting accessories.

#### DIMENSIONS:



Vista Professional Outdoor Lighting reserves the right to modify the design and/or construction of the fixture shown without further notification.



# SPECIFICATION SHEET

## MODEL 1057 Architectural Series • Up & Accent Lights

### LAMP SPECIFICATIONS

**LED:**

- High lumen output LED powered for high efficacy
- Cree® CXA 1830 COB driven at 450mA, 700mA, or 900mA
- Luminus® CGM-14 COB driven at 1050mA, 1200mA, or 1400mA.
- 2700°K 3000°K, 3500°K, 4000°K, or 5000°K CCT ANSI white 4 step Cree® Easy White™ bins.
- Luminus LED are offered in 3000°K, 3500°K, or 4000°K CCT (ANSI white 3 step)
- 1500-5780 Delivered lumens.
- 20-57 Watts

**OPTICS/AIMING:**

- High-purity anodized specular or semi-specular aluminum optics designed for maximum performance and uniformity
- Very Narrow Spot **VNS** (NEMA 2x2), Narrow Spot **NS** (NEMA 2x2),

- Medium Flood **MF** (NEMA 4x4), and Wide Flood **WF** (NEMA 6x6)
- Housing aiming achieved via a heavy aluminum yoke strap and locked in position with stainless steel lock washers and nuts

**ELECTRICAL:**

- Constant current 450mA, 700mA, or 900mA, 1050mA, 1200mA, or 1400mA output driver
- Multi-Volt **MV** 120V-277V universal input
- 3 foot 18/3 outdoor-rated hard usage cable standard for non-dimming fixtures
- 3 foot 18/5 outdoor-rated hard usage cable standard for dimming fixtures

### FIXTURE ORDERING INFORMATION

TO ORDER FIXTURE: Select appropriate choice from each column as in the following example.

**EXAMPLE: 1057-GG-NS-40-B-MV-010-HS**

MODEL	FINISH	DISTRIBUTION	COLOR TEMP	DELIVERED LUMENS	VOLTAGE	DIMMING	ACCESSORIES
1057	Standard	* <b>VNS</b> - Very Narrow Spot <b>NS</b> - Narrow Spot <b>MF</b> - Medium Flood <b>WF</b> - Wide Flood	** <b>27</b> - 2700°K <b>30</b> - 3000°K <b>35</b> - 3500°K <b>40</b> - 4000°K <b>**50</b> - 5000°K	<b>A</b> - 1500-2000 Lumens <b>B</b> - 2000-2500 Lumens <b>C</b> - 2500-3000 Lumens <b>D</b> - 3900-4200 Lumens <b>E</b> - 4200-4600 Lumens <b>F</b> - 4800-5780 Lumens	<b>MV</b> - Multi-Volt (120V-277V)	<b>ND</b> - No Dimming <b>010</b> - 0-10V <b>PCT</b> - Phase cut dimming (TRIAC/ELV) D,E,F Delivered Lumens only	<b>BD</b> - Barn Doors <b>FS</b> - Full Light Shield <b>HS</b> - Half Light Shield <b>DF</b> - Diffuse Filter <b>LSFH</b> - Linear Spread Filter Horizontal <b>LSFV</b> - Linear Spread Filter Vertical
	B - Black						
	Z - Architectural Bronze						
	DZ - Dark Bronze						
	GT - Granite						
	W - White						
	Premium						
	BR - Architectural Brick						
	LZ - Light Bronze						
	SB - Special Bronze						
GG - Glossy Gray							
R - Rust							
HG - Hunter Green							
WB - Weathered Bronze							
WI - Weathered Iron							
GM - Graphite Metallic							
Hand Finished							
G - Verde							
P - Pewter							
M - Mocha							
OF - Olde Finish							

\* 1057-VNS not available with D, E & F Delivered Lumen Packages  
\*\* 2700°K & 5000°K not available in D, E & F Delivered Lumens Packages



**PROFESSIONAL**  
OUTDOOR LIGHTING

## SPECIFICATION SHEET

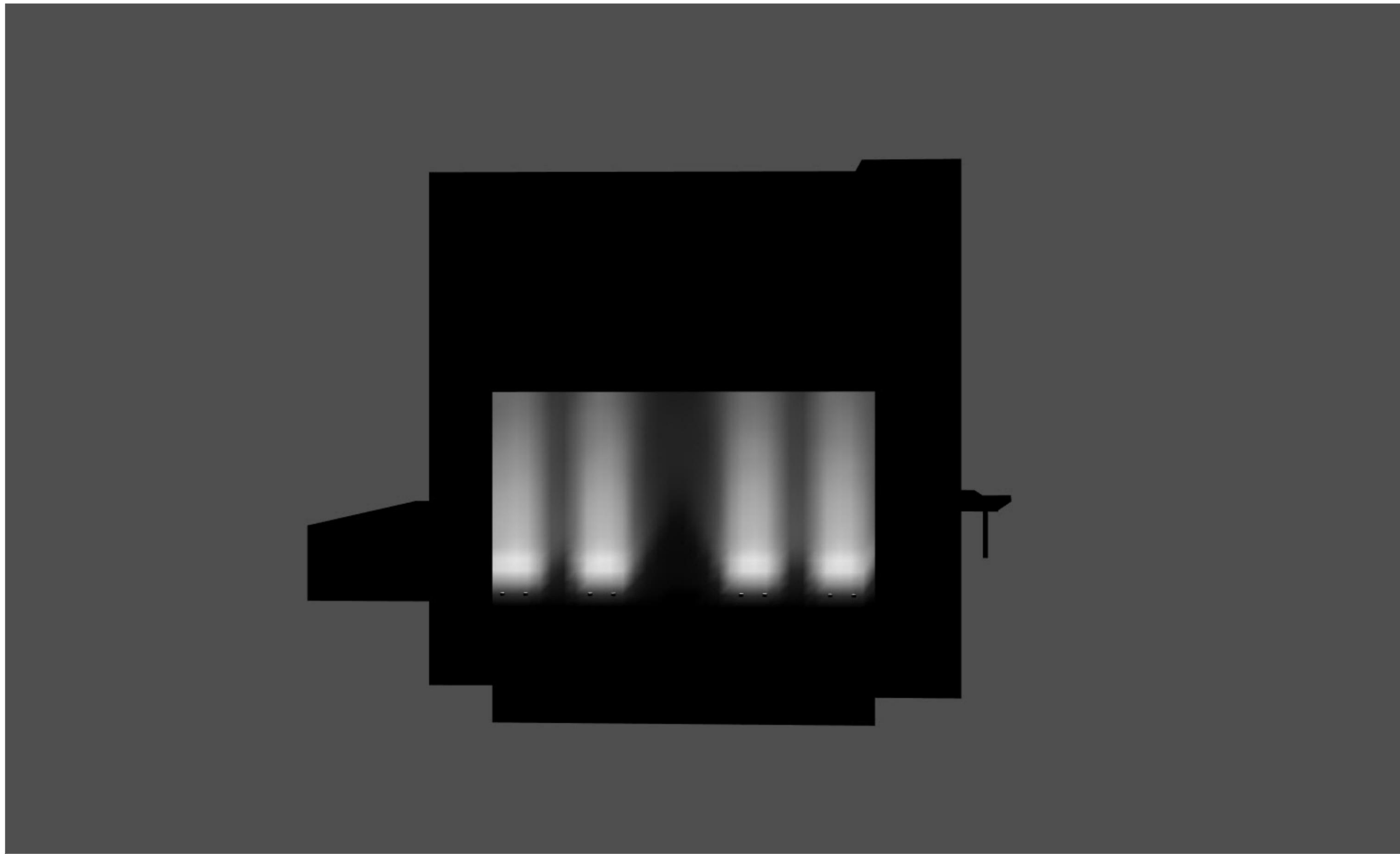
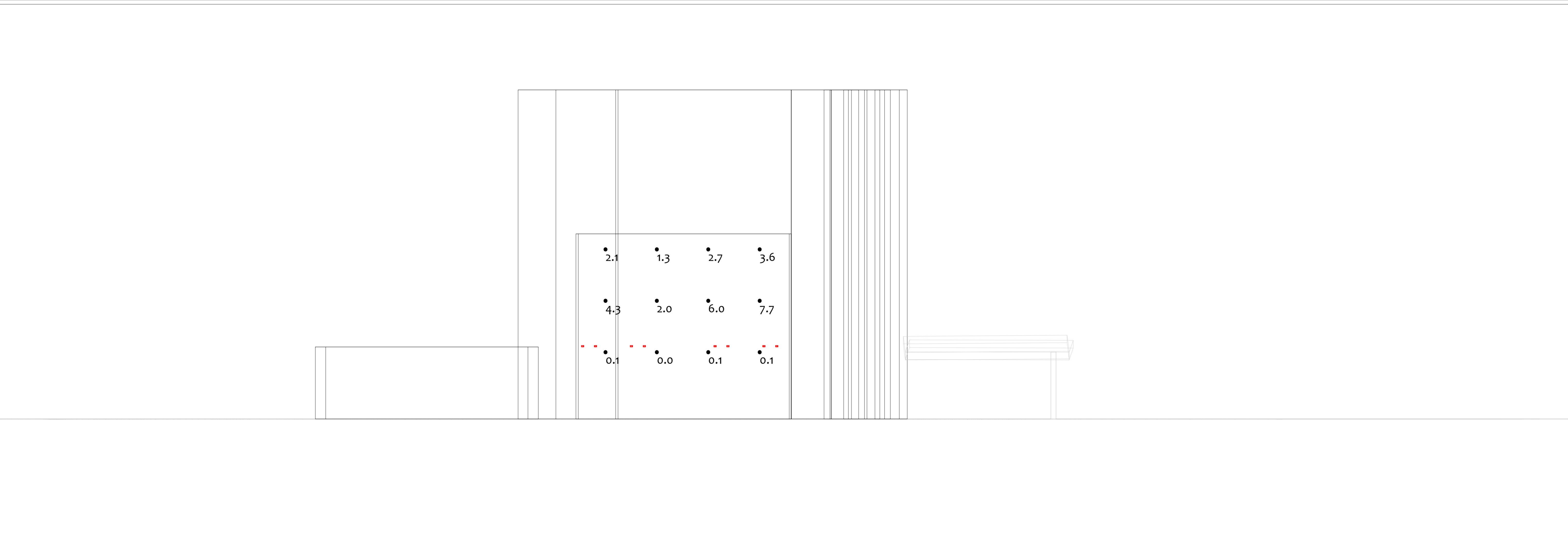
### MODEL 1057 Architectural Series • Up & Accent Lights

#### LUMEN OUTPUT PACKAGES

Watts	Lumens
-------	--------

Beam Spread	A	B	C	D	E	F
<b>VNS</b>	38.3 Watts 1685 Lumens	47 Watts 2396 Lumens	57 Watts 2720 Lumens			
<b>NS</b>	19.2 Watts 1835 Lumens	27.8 Watts 2589 Lumens	42.7 Watts 2825 Lumens	42 Watts 4218 Lumens	47 Watts 4597 Lumens	57 Watts 5778 Lumens
<b>MF</b>	19.2 Watts 1603 Lumens	27.8 Watts 2214 Lumens	38.3 Watts 2748 Lumens	42 Watts 3892 Lumens	47 Watts 4241 Lumens	57 Watts 4796 Lumens
<b>WF</b>	19.4 Watts 1613 Lumens	27.8 Watts 2263 Lumens	38.1 Watts 2775 Lumens	42 Watts 3928 Lumens	47 Watts 4260 Lumens	57 Watts 4819 Lumens

*Vista Professional Outdoor Lighting reserves the right to modify the design and/or construction of the fixture shown without further notification.*



Luminaire Schedule				
Tag	Symbol	Qty	[MANUFAC]	Label
		8	U.S.T.E. DBA VISTA PROFESSIONAL OUTDOOR LIGHTING	1057-N5-A30

Calculation Summary						
Label	Units	Avg	Max	Min	Avg/Min	Max/Min
Bldg-side_3	Fc	3.50	7.7	0.0	N.A.	N.A.
Bldg_Side_3	Fc	0.00	0.0	0.0	N.A.	N.A.

# FLOODLIGHTS - WEST ELEVATION, 6-21-22



#	Date	Comments
Revisions		

Drawn By: REASOR  
 Checked By:  
 Date: 6/21/2022  
 Scale: 1" = 20'-0"

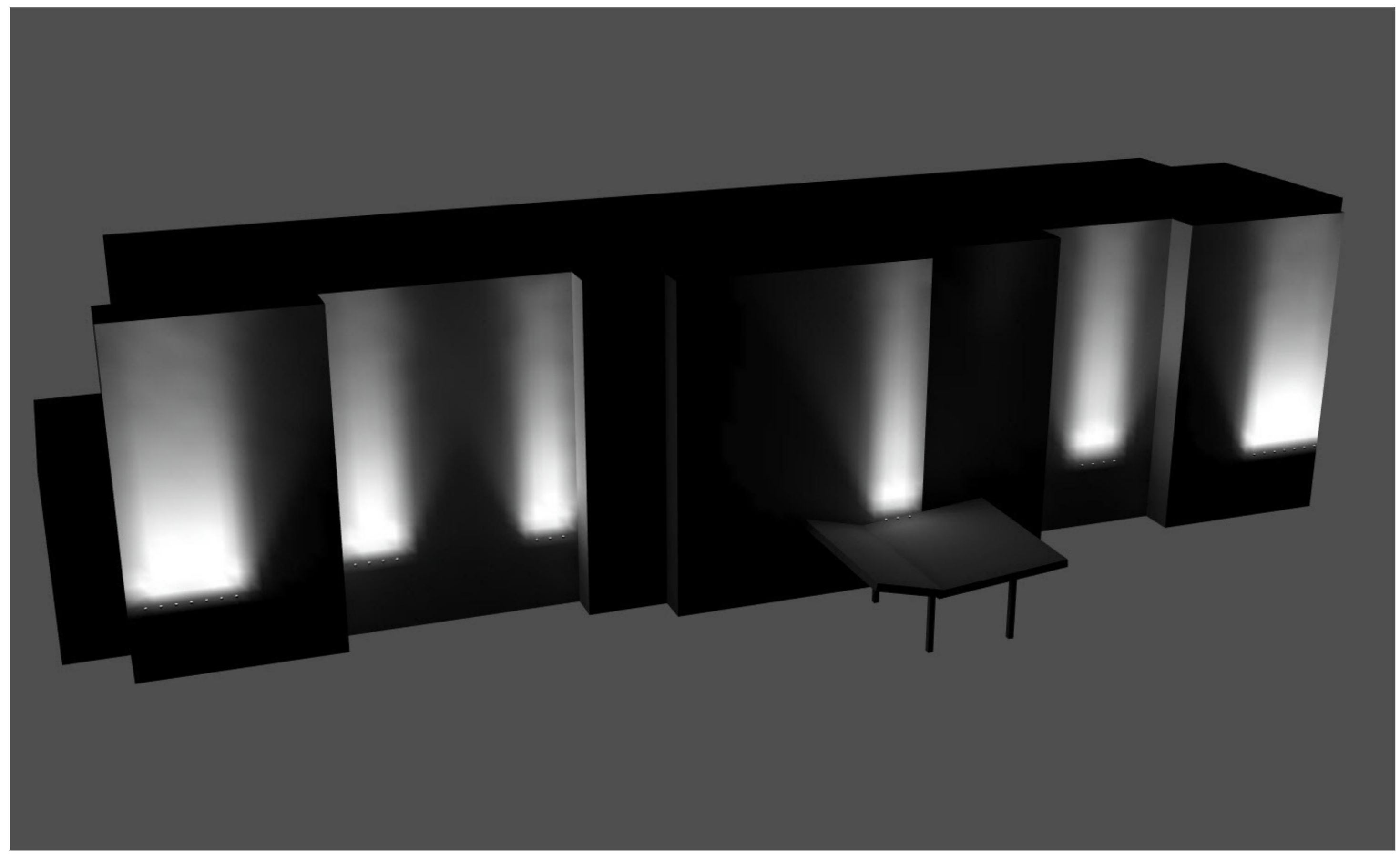
TOWNEPLACE INN



#	Date	Comments

Drawn By: REASOR  
Checked By:  
Date: 6/21/2022  
Scale: 1" = 20'-0"

**TOWNEPLACE INN**



Luminaire Schedule				
Tag	Symbol	Qty	[MANUFAC]	Label
	⊕	28	U.S.T.E. DBA VISTA PROFESSIONAL OUTDOOR LIGHTING	1057-NSA-30

Calculation Summary						
Label	Units	Avg	Max	Min	Avg/Min	Max/Min
Bldg_Side_12	Fc	2.53	9.3	0.1	25.30	93.00
Bldg_Side_16	Fc	5.48	12.1	1.2	4.57	10.08
Bldg_Side_18	Fc	5.31	12.7	1.0	5.31	12.70
Bldg_Side_6	Fc	5.84	13.3	1.2	4.87	11.08
Bldg_Side_8	Fc	4.70	7.4	1.7	2.76	4.35

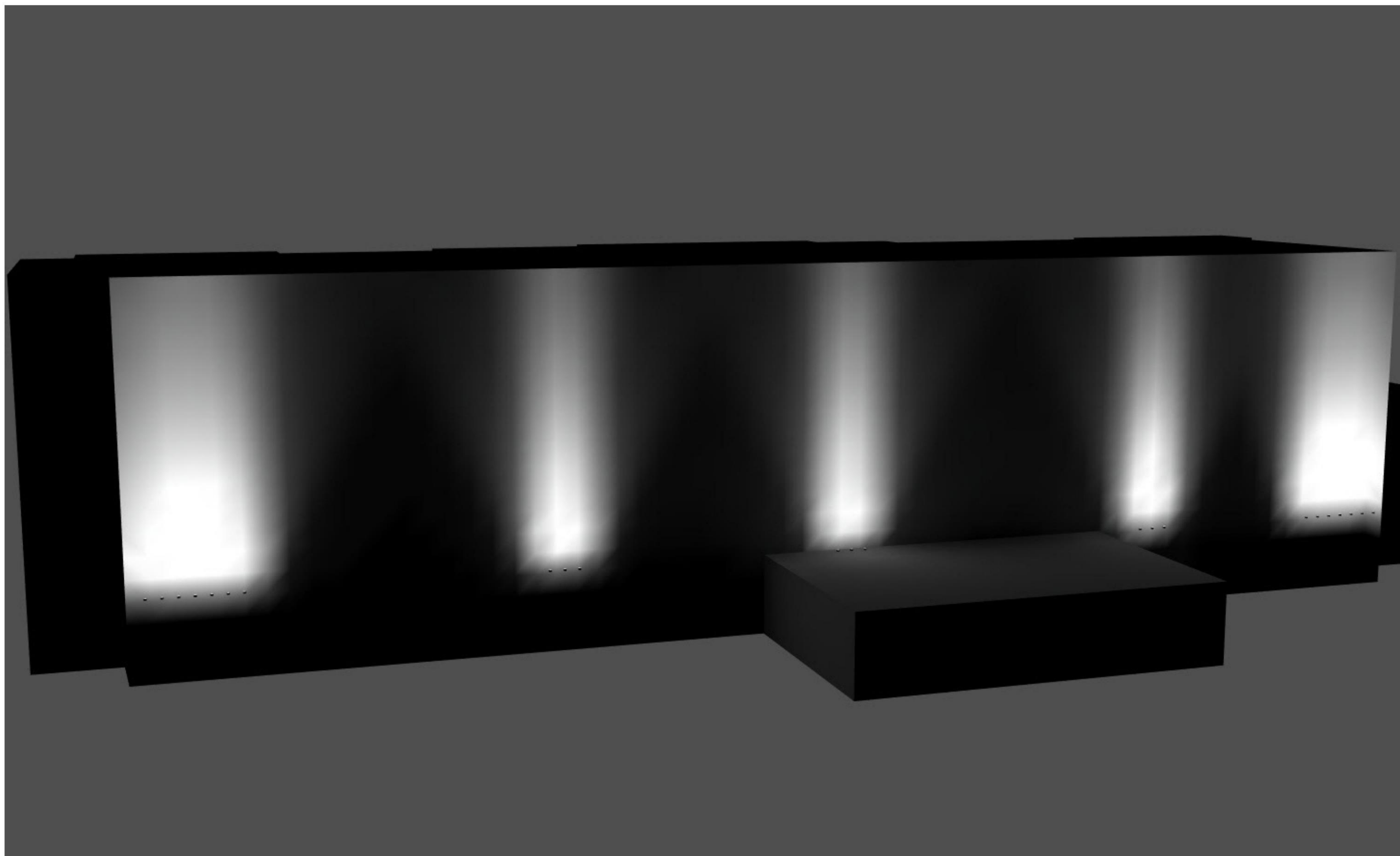
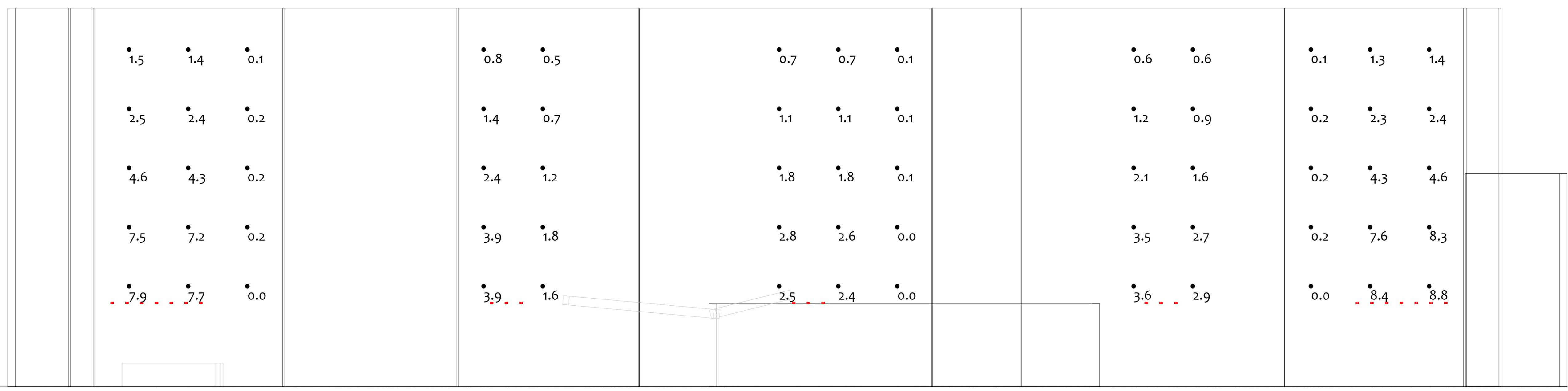
# FLOODLIGHTS - SOUTH ELEVATION, 6-21-22



#	Date	Comments

Drawn By: REASOR  
Checked By:  
Date: 6/21/2022  
Scale: 1" = 20'-0"

TOWNEPLACE INN

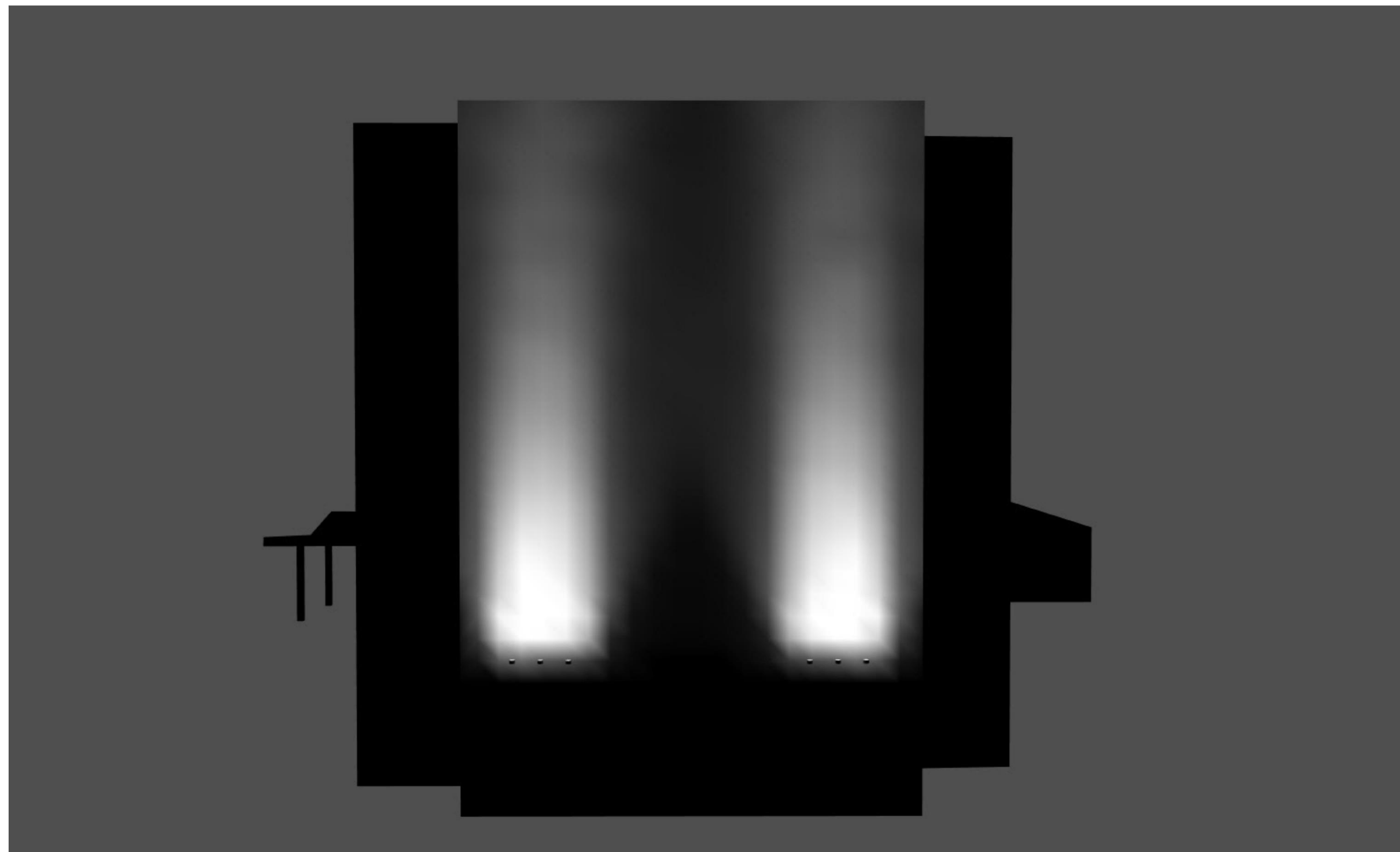
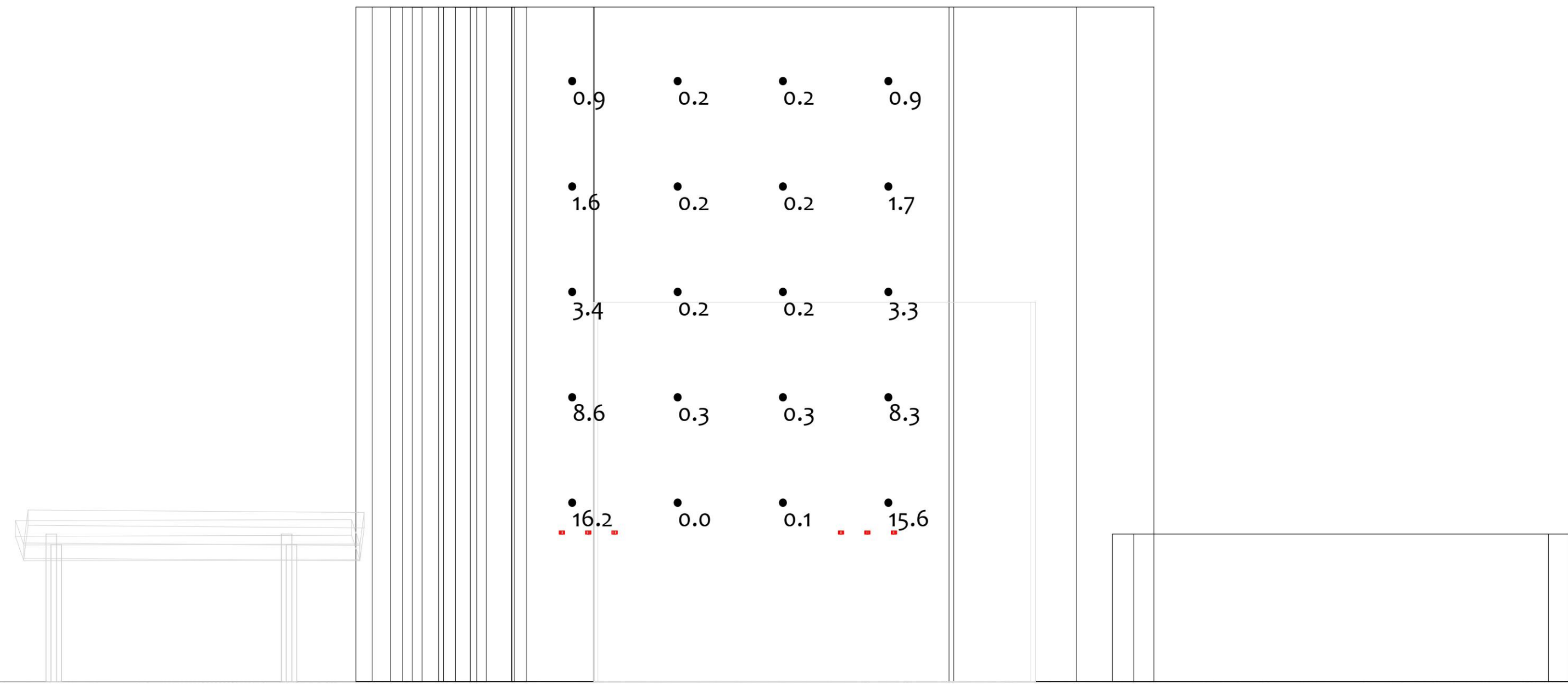


Luminaire Schedule				
Tag	Symbol	Qty	[MANUFAC]	Label
	⤠	23	U.S.T.E. DBA VISTA PROFESSIONAL OUTDOOR LIGHTING	1057-NS-A-30

Calculation Summary						
Label	Units	Avg	Max	Min	Avg/Min	Max/Min
Bldg_Side_22	FC	3.36	8.8	0.0	N.A.	N.A.

# FLOODLIGHTS - NORTH ELEVATION, 6-21-22





Luminaire Schedule				
Tag	Symbol	Qty	[MANUFAC]	Label
	⬇	6	U.S.T.E. DBA VISTA PROFESSIONAL OUTDOOR LIGHTING	1057-NS-A-30

Calculation Summary						
Label	Units	Avg	Max	Min	Avg/Min	Max/Min
Bldg_Side_3	Fc	3.12	16.2	0.0	N.A.	N.A.

# FLOODLIGHTS - EAST ELEVATION, 6-17-22



#	Date	Comments

Revisions

Drawn By: REASOR  
 Checked By:  
 Date: 6/21/2022  
 Scale: 1" = 20'-0"

TOWNEPLACE INN