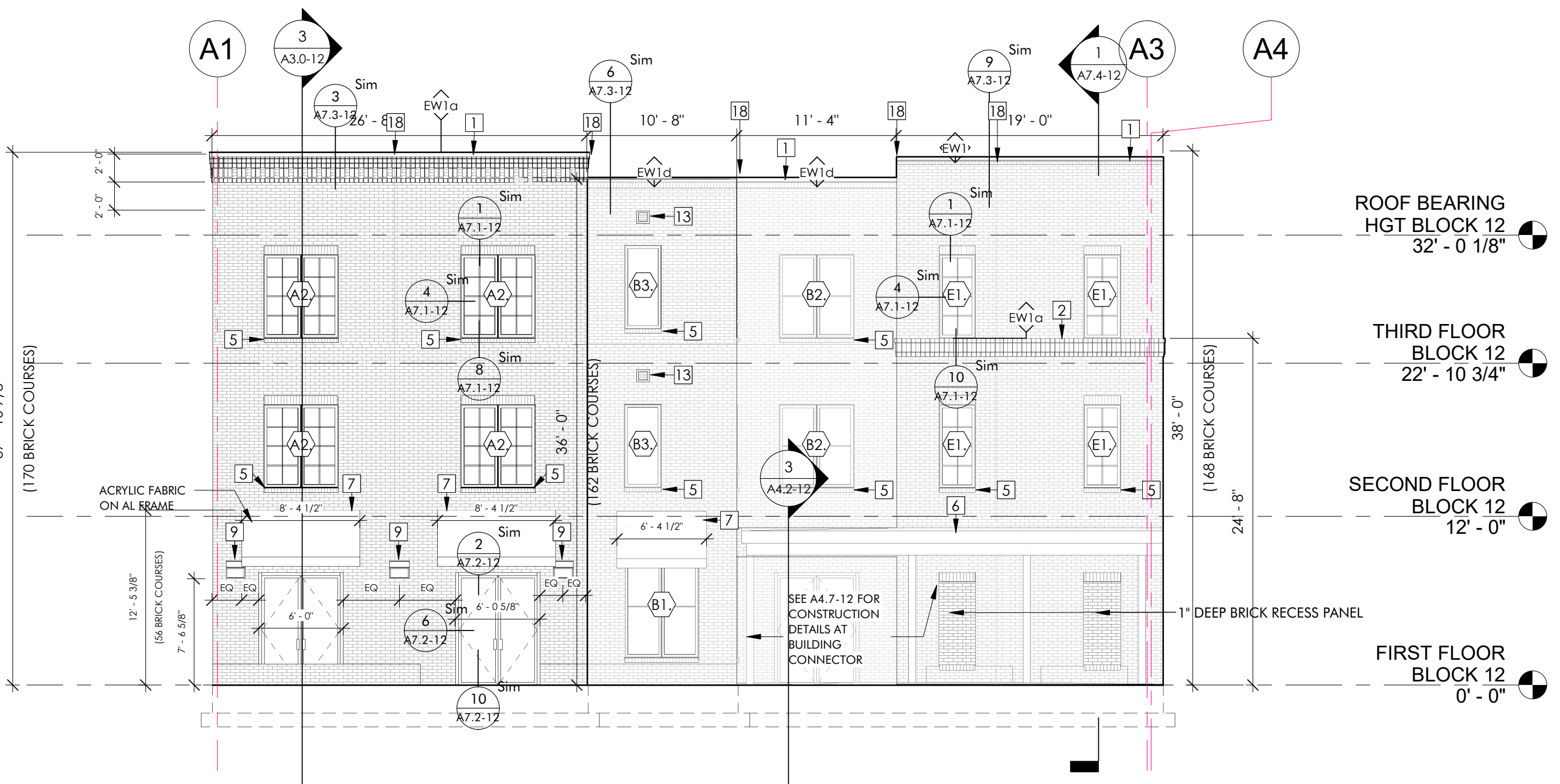
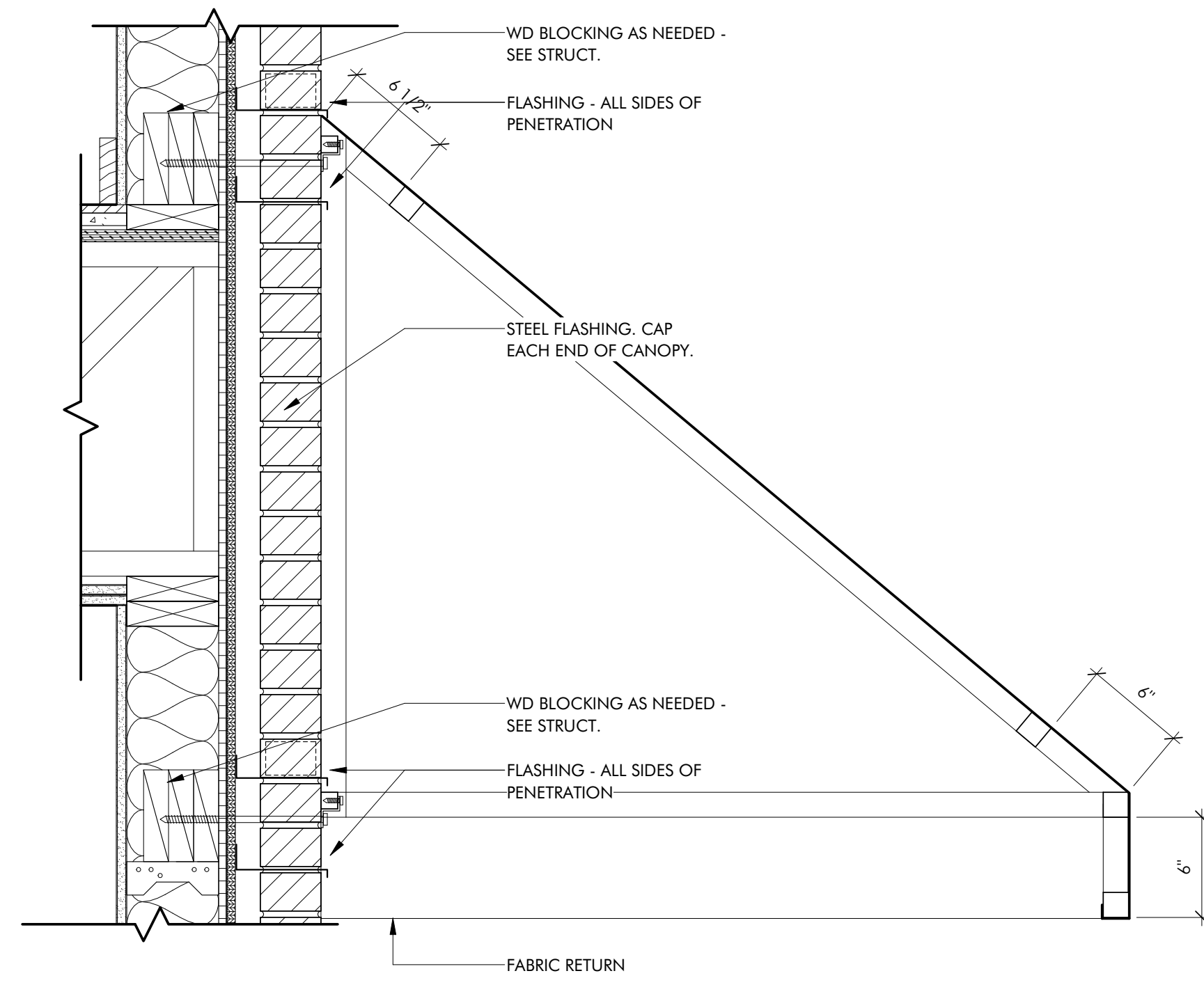


1 BLOCK 12 - 1 - SOUTH ELEVATION
 A2.0-12 1/8" = 1'-0"



2 BLOCK 12 - 1 - EAST
 A2.0-12 1/8" = 1'-0"



3 TYPICAL FABRIC CANOPY - BLDG 1
 A2.0-12 1/2" = 1'-0"

ELEVATION GENERAL NOTES:

- IF SIDE ELEVATIONS OF BAYS ARE NOT SHOWN, ASSUME THE MATERIALS SHOWN ON THE FRONT ELEVATION OF THE BAY. RETURNS BACK TO THE NEARBY ADJACENT WALL AT THE SAME HEIGHT AS SHOWN ON FRONT ELEVATION.
- LOUVERS AND VENTS SHOULD BE FACTORY FINISHED TO MATCH IN COLOR, AS CLOSELY AS POSSIBLE, TO ADJACENT MATERIALS WHERE THEY ARE LOCATED ON THE ELEVATION.

ELEVATION KEYED NOTES

- | | | |
|---------------------------------------|--|---|
| 1 PARAPET CAP FLASHING. | 8 STEEL CANOPIES - SEE A7 SERIES AND STRUCTURAL. | 14 GUTTER - SEE ROOF PLAN AND WALL SECTION. |
| 2 ROWLOCK OVER SOLDIER COURSE CORNICE | 9 LIGHTING FIXTURE - SEE ELECTRICAL. | 15 EZ TRIM OR SIM. HORIZONTAL TRIM. |
| 3 RECESSED FIBER CEMENT PANEL | 10 SIGNAGE TBD THIS AREA - 10" HIGH X 1/8" THICK, LASER CUT, MILL FINISHED ALUMINUM. | 16 EZ TRIM OR SIM. VERTICAL TRIM. |
| 4 3 COURSE RECESS. | 11 SIGNAGE TBD THIS AREA - 4" HIGH ALUMINUM CHARACTERS. | 17 EZ TRIM OR SIM. OUTSIDE CORNER TRIM. |
| 5 STANDARD ROWLOCK. | 12 BRICK HANDICAP RAMP: REFER TO 1ST FLOOR PLAN, WALL SECTIONS, AND CIVIL DRAWINGS. | 18 EXPANSION JOINT EXTEND THROUGH PARAPET, LOCATE PER 3/A2.1-12, TYP. |
| 6 COVERED CONNECTOR | 13 MECHANICAL EXHAUST LOUVERS. | |
| 7 ACRYLIC CLOTH CANOPY ON AL FRAME | | |

PERCENTAGE BRICK ON FACADE

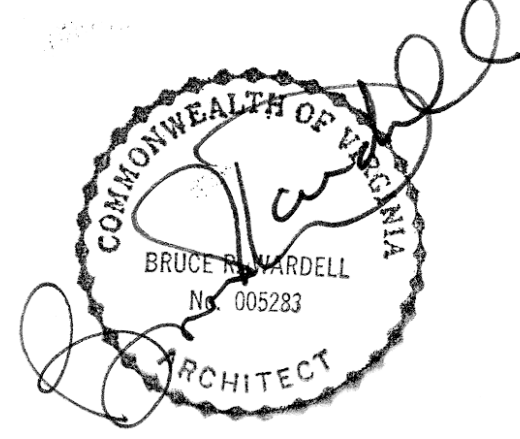
APT A BLDG 1	BRICK	NON-BRICK	TOTAL	BRICK %	NON-BRICK %
APT A BLDG 1	15,237 SF	3,257 SF	18,495 SF	82.4%	17.6%
APT A BLDG 2	14,317 SF	3,276 SF	17,593 SF	81.4%	18.6%
APT A COMBINED	28,554 SF	6,533 SF	36,088 SF	81.9%	18.1%

PHA @ Southwood

Southwood Apartments
 Hickory Street
 Charlottesville, VA 22902

FOR
 Piedmont Housing
 Alliance

FOR CONSTRUCTION



JOB NUMBER	19048
DATE	01/11/23
DRAWN BY	WM, KH, MH, GH, TM
APPROVED BY	WM, KK
2020	© brwarchitects, p.c.

VHDA CONTRACT SET

REVISIONS	
01/11/23	VHDA CONTRACT SET = 100% PERMIT DOCUMENTS DATED 07/01/22 WITH INTEGRATION OF ADDENDUM #1 DATED 11/30/22 - SEE ADDENDUM #1 FOR ALL RESPONSES

A2.0-12

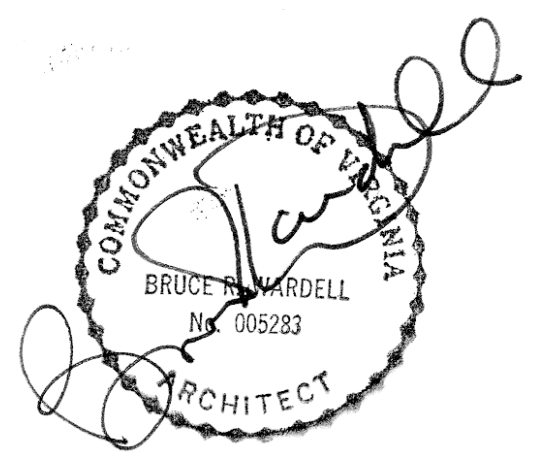
EXTERIOR ELEVATION - BLDG 1

PHA @ Southwood

Southwood Apartments
 Hickory Street
 Charlottesville, VA 22902

FOR
Piedmont Housing Alliance

FOR CONSTRUCTION



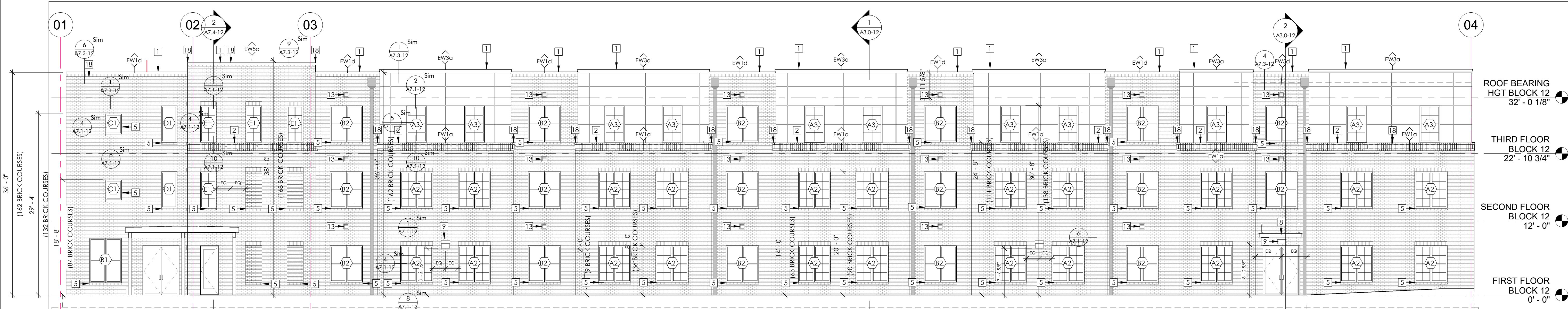
JOB NUMBER	19048
DATE	01/11/23
DRAWN BY	TM
APPROVED BY	WM, KK
2020	© brwarchitects, p.c.

VHDA CONTRACT SET

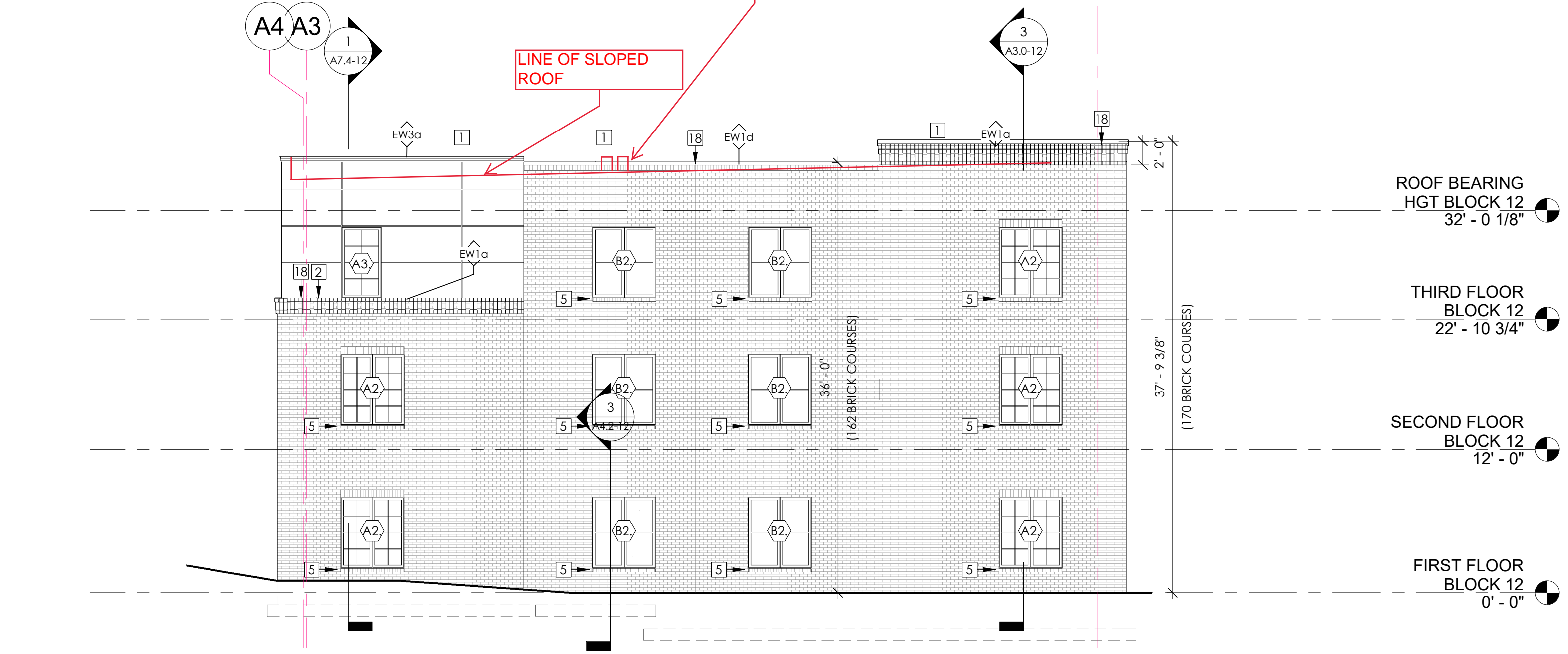
REVISIONS	
01/11/23	VHDA CONTRACT SET = 100% PERMIT DOCUMENTS DATED 07/01/22 WITH INTEGRATION OF ADDENDUM #1 DATED 11/30/22 - SEE ADDENDUM #1 FOR ALL RESPONSES

A2.1-12

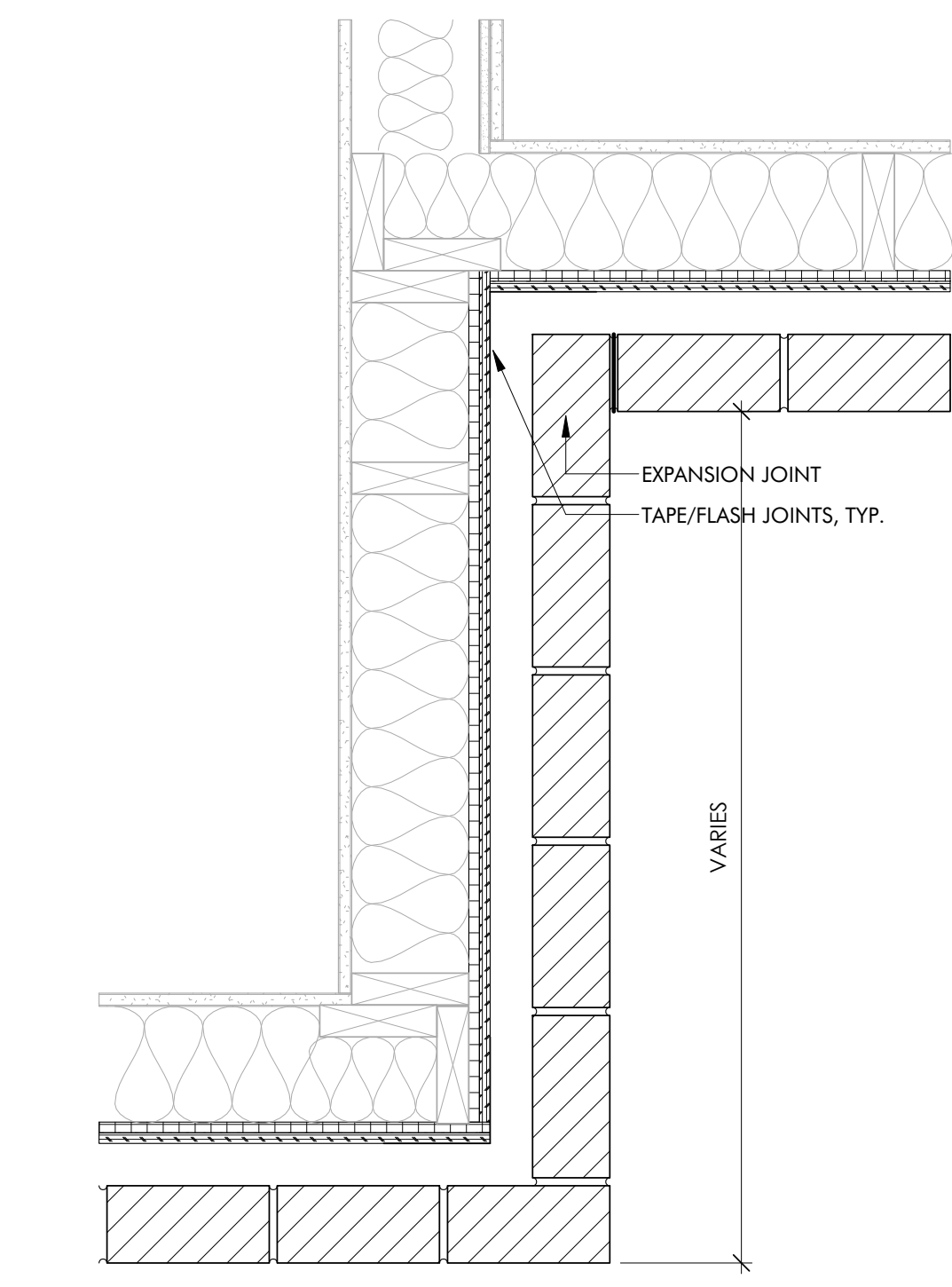
EXTERIOR ELEVATION - BLDG 1



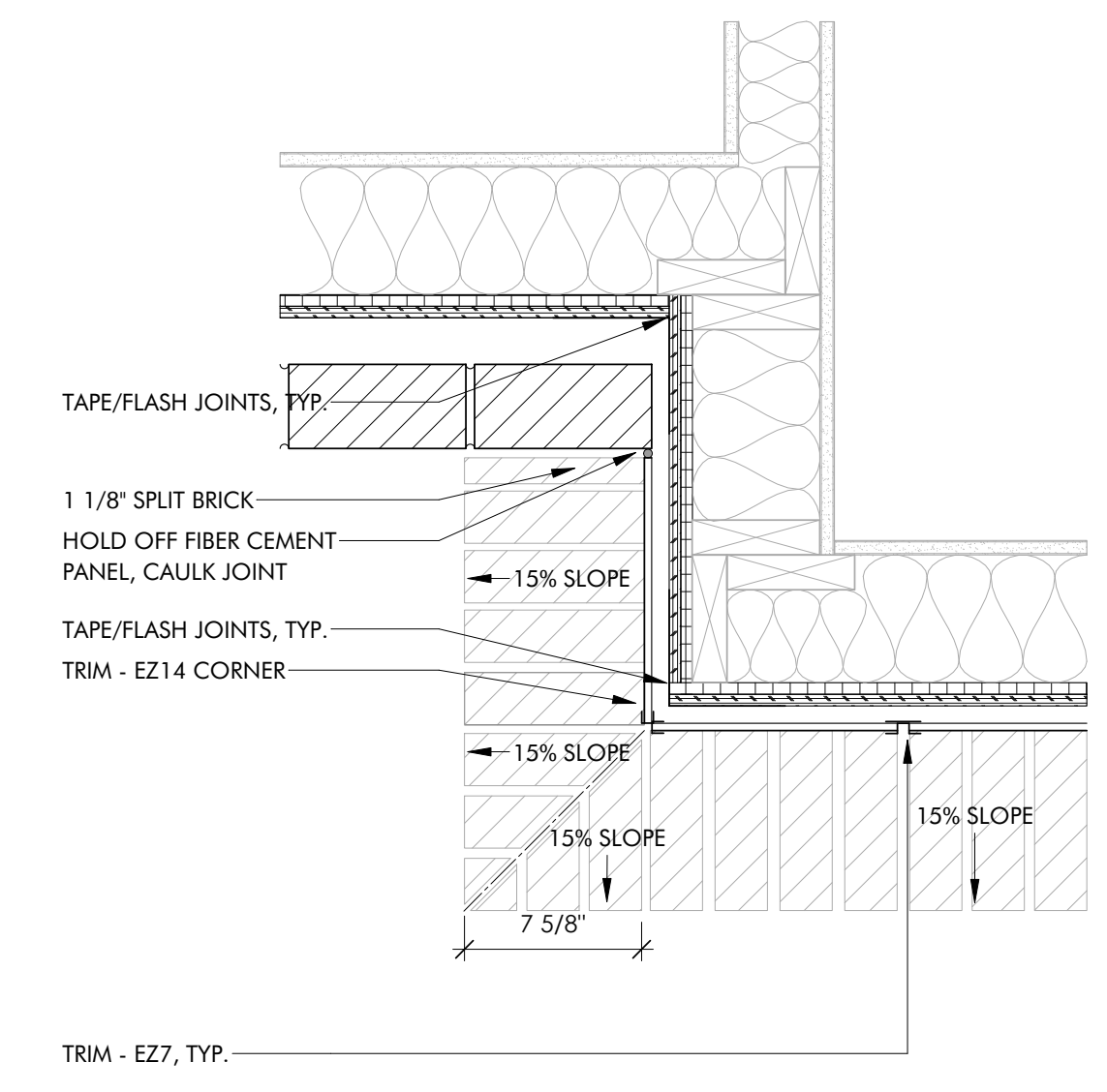
1 BLOCK 12 - 1 - NORTH
 A2.1-12 1/8" = 1'-0"



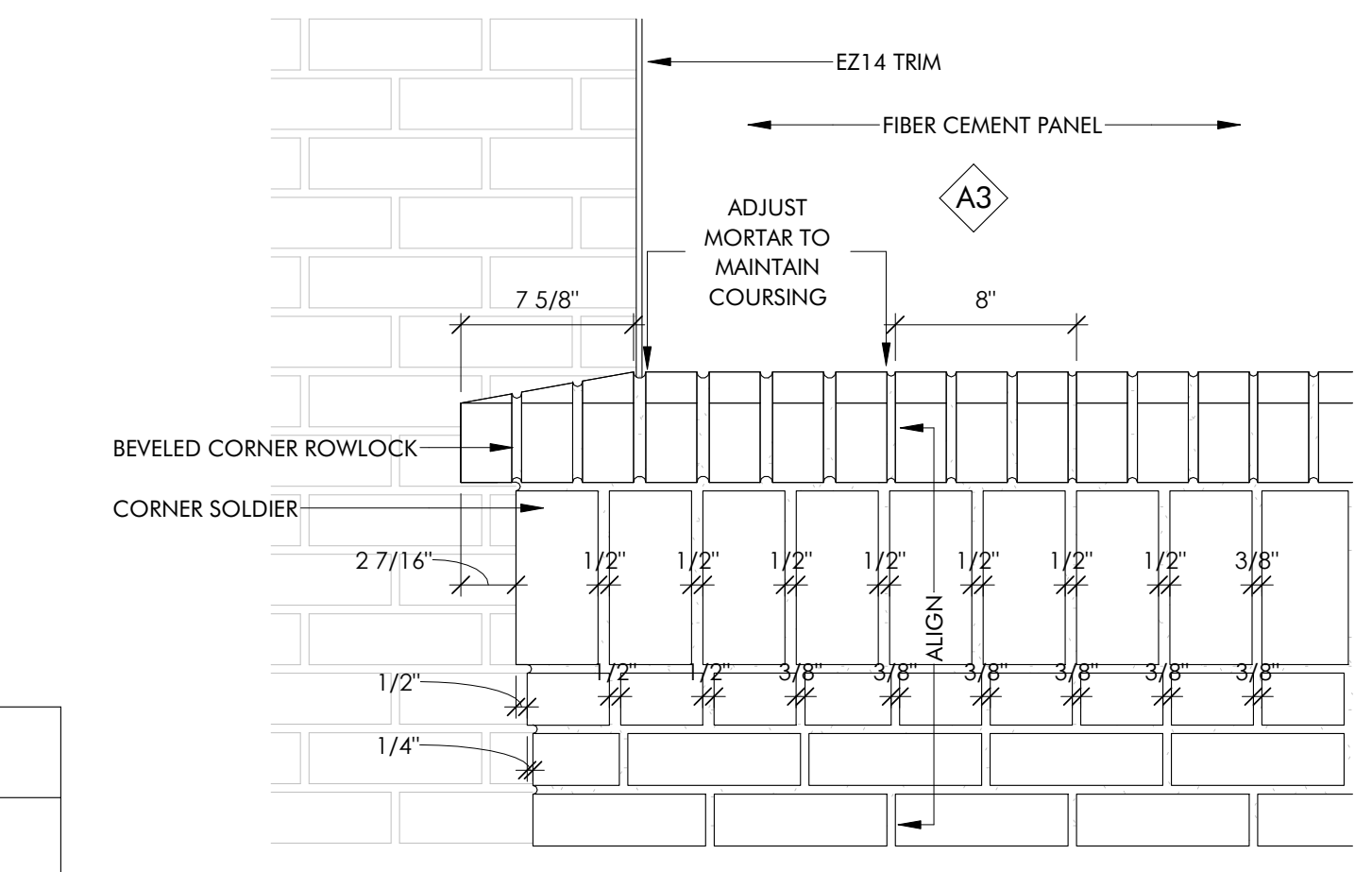
2 BLOCK 12 - 1 - WEST
 A2.1-12 1/8" = 1'-0"



3 BRICK RETURN - BLDG 1, BLK 12
 A2.1-12 1 1/2" = 1'-0"



4 FIBER CEMENT PANEL RETURN - BLDG 1, BLK 12
 A2.1-12 1 1/2" = 1'-0"



5 CORNER DETAIL - BLDG 1, BLK 12
 A2.1-12 1 1/2" = 1'-0"

ELEVATION GENERAL NOTES:

- IF SIDE ELEVATIONS OF BAYS ARE NOT SHOWN, ASSUME THE MATERIALS SHOWN ON THE FRONT ELEVATION OF THE BAY. RETURNS BACK TO THE NEARBY ADJACENT WALL AT THE SAME HEIGHT AS SHOWN ON FRONT ELEVATION.
- LOUVERS AND VENTS SHOULD BE FACTORY FINISHED TO MATCH IN COLOR, AS CLOSELY AS POSSIBLE, TO ADJACENT MATERIALS WHERE THEY ARE LOCATED ON THE ELEVATION.

ELEVATION KEYED NOTES

- PARAPET CAP FLASHING.
- ROWLOCK OVER SOLDIER COURSE CORNICE
- RECESSED FIBER CEMENT PANEL
- 3 COURSE RECESS.
- STANDARD ROWLOCK.
- COVERED CONNECTOR
- ARCRYLIC CLOTH CANOPY ON AL FRAME

- STEEL CANOPIES - SEE A7 SERIES AND STRUCTURAL.
- LIGHTING FIXTURE - SEE ELECTRICAL.
- SIGNAGE TBD THIS AREA - 10" HIGH X 1/8" THICK, LASER CUT, MILL FINISHED ALUMINUM.
- SIGNAGE TBD THIS AREA - 4" HIGH ALUMINUM CHARACTERS.
- BRICK HANDICAP RAMP: REFER TO 1ST FLOOR PLAN, WALL SECTIONS, AND CIVIL DRAWINGS.
- MECHANICAL EXHAUST LOUVERS.

- GUTTER - SEE ROOF PLAN AND WALL SECTION.
- EZ TRIM OR SIM. HORIZONTAL TRIM.
- EZ TRIM OR SIM. VERTICAL TRIM.
- EZ TRIM OR SIM. OUTSIDE CORNER TRIM.
- EXPANSION JOINT EXTEND THROUGH PARAPET, LOCATE PER 3/A2.1-12, TYP.

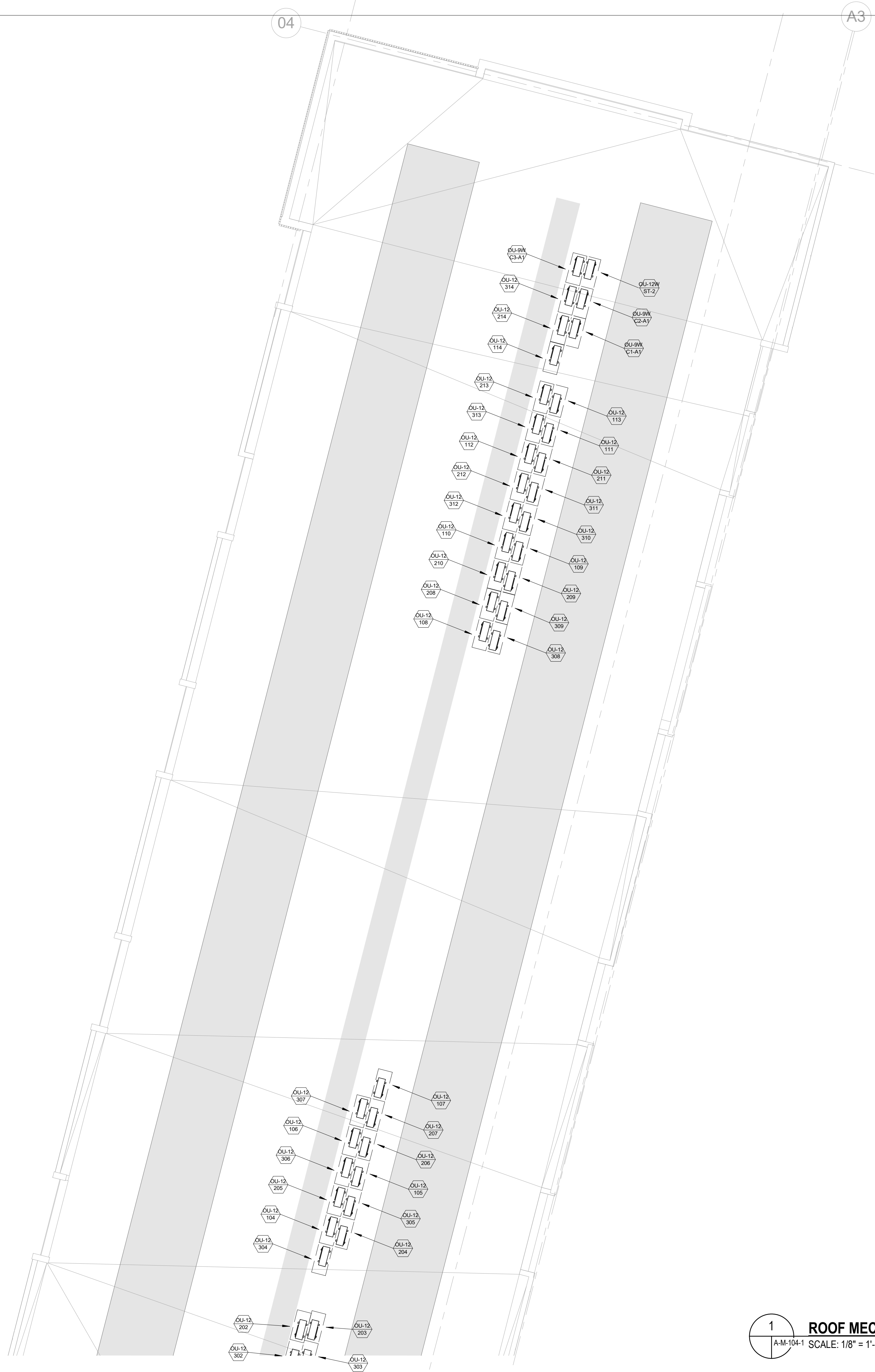
PERCENTAGE BRICK ON FACADE

APT A BLDG 1	BRICK	NON-BRICK	TOTAL	BRICK %	NON-BRICK %
APT A BLDG 1	15,237 SF	3,257 SF	18,494 SF	82.4%	17.6%
APT A BLDG 2	14,317 SF	3,276 SF	17,593 SF	81.4%	18.6%
APT A COMBINED	28,554 SF	6,533 SF	34,087 SF	81.9%	18.1%

C:\Revit Local\19048_PHA_Southwood_CENTRAL_V2021_wmdermot55KBZ.rvt

1/17/2023 9:31:41 AM

TM



1 ROOF MECHANICAL DUCTWORK PLAN APARTMENTS A - BUILDING 1
 A-M-104-1 SCALE: 1/8" = 1'-0"



SOUTHWOOD

SOUTHWOOD PHASE 1
 HICKORY STREET
 CHARLOTTESVILLE, VA
 22902

FOR

PIEDMONT HOUSING ALLIANCE



JOB NUMBER	19048
DATE	01/11/23
DRAWN BY	D.W., K.B.
APPROVED BY	D.W.
© brwarchitects, p.c.	

VHDA CONTRACT SET

REVISIONS	
01/11/23	VHDA CONTRACT SET = 100% PERMIT DOCUMENTS DATED 07/01/22 WITH INTEGRATION OF ADDENDUM #1 DATED 11/03/22 - SEE ADDENDUM #1 FOR ALL RESPONSES

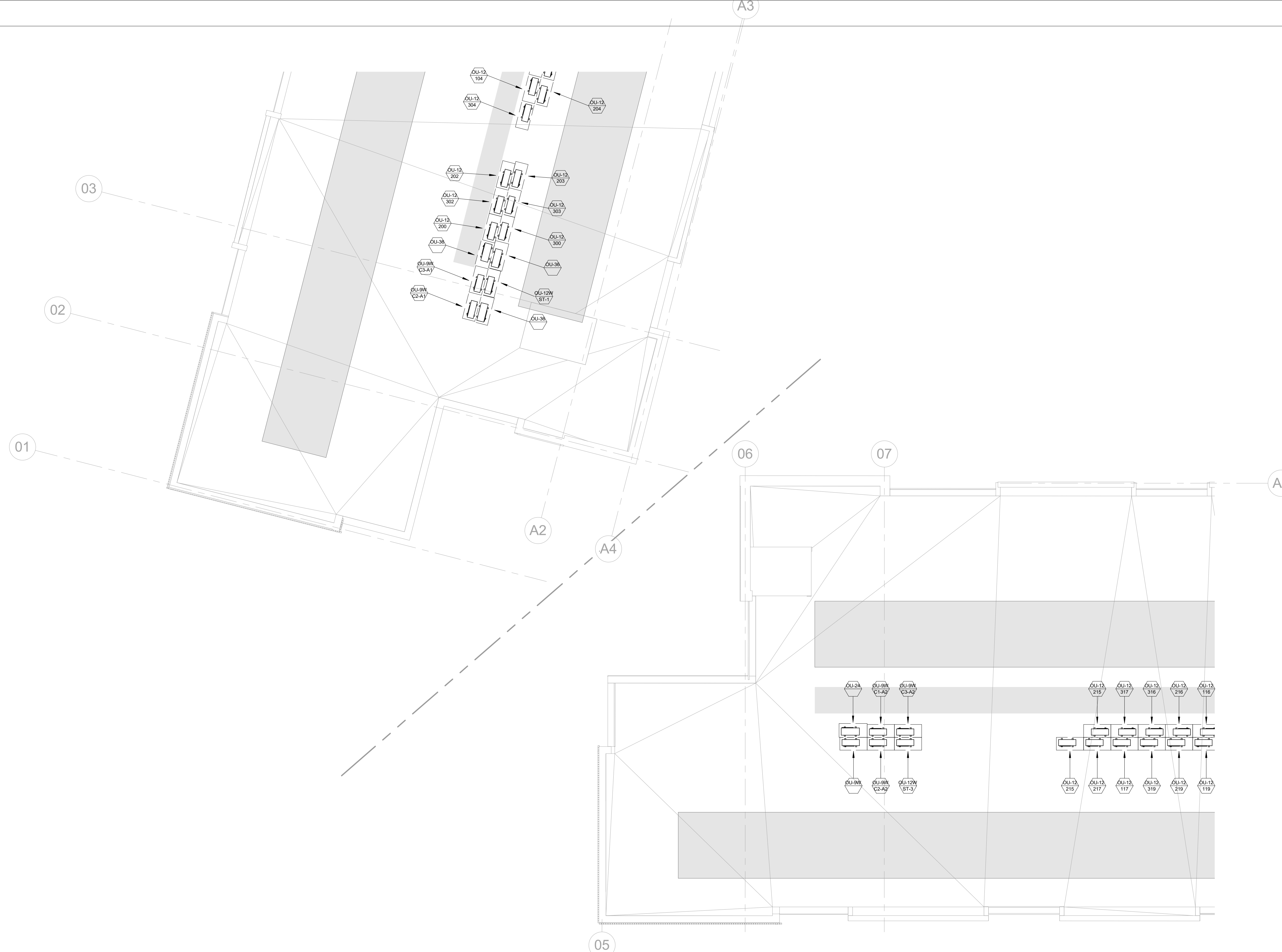
A-M-104-1

ROOF APARTMENTS A
 MECHANICAL
 DUCTWORK PLAN

C:\Users\Devin\Desktop\SSIMKF\Documents\SOUTHWOOD_MEP_v21_DevinSW.rvt

1/16/2023 8:34:14 AM

D.W., K.B.



SOUTHWOOD

SOUTHWOOD PHASE 1
 HICKORY STREET
 CHARLOTTESVILLE, VA
 22902

FOR

PIEDMONT HOUSING ALLIANCE



JOB NUMBER	19048
DATE	01/11/23
DRAWN BY	D.W., K.B.
APPROVED BY	D.W.

© brwarchitects, p.c.

VHDA CONTRACT SET

REVISIONS	
01/11/23	VHDA CONTRACT SET = 100% PERMIT DOCUMENTS DATED 07/01/22 WITH INTEGRATION OF ADDENDUM #1 DATED 11/30/22 - SEE ADDENDUM #1 FOR ALL RESPONSES

A-M-104-1/2

ROOF APARTMENTS A MECHANICAL DUCTWORK PLAN

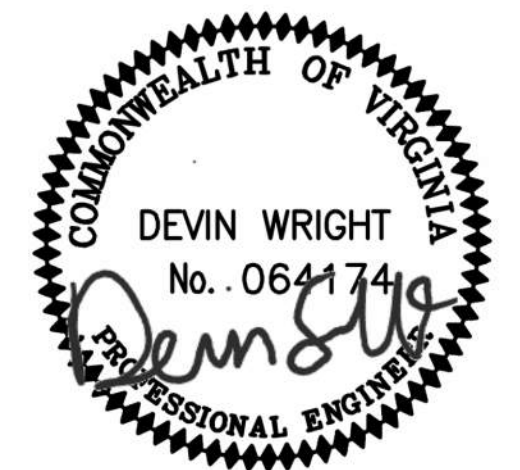
1
 A-M-104-1/2 SCALE: 1/8" = 1'-0"
ROOF MECHANICAL DUCTWORK PLAN APARTMENTS A - BUILDING 1/2

SOUTHWOOD

SOUTHWOOD PHASE 1
 HICKORY STREET
 CHARLOTTESVILLE, VA
 22902

FOR

**PIEDMONT
 HOUSING
 ALLIANCE**



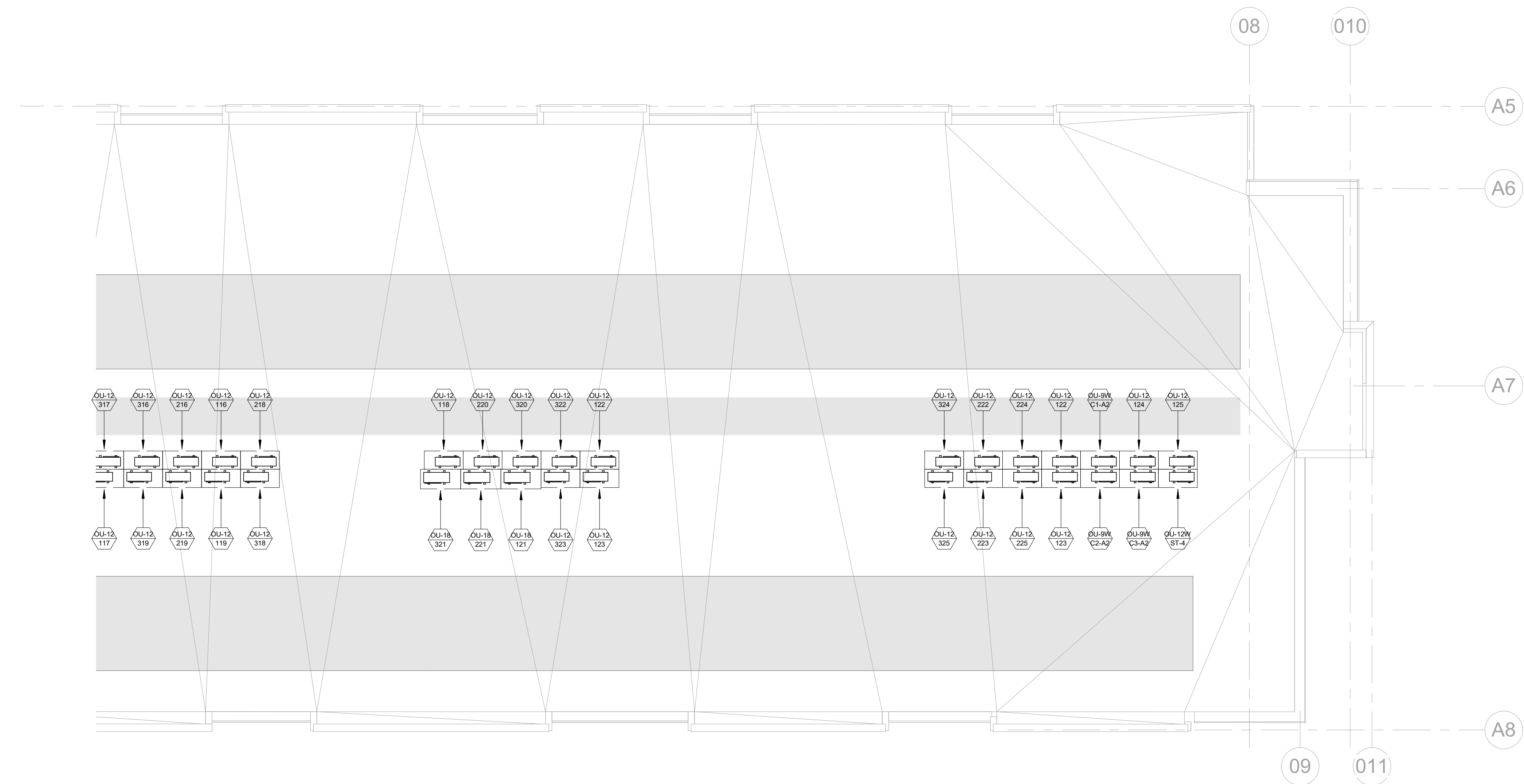
JOB NUMBER	19048
DATE	01/11/23
DRAWN BY	D.W., K.B.
APPROVED BY	D.W.
© brwarchitects, p.c.	

**VHDA
 CONTRACT SET**

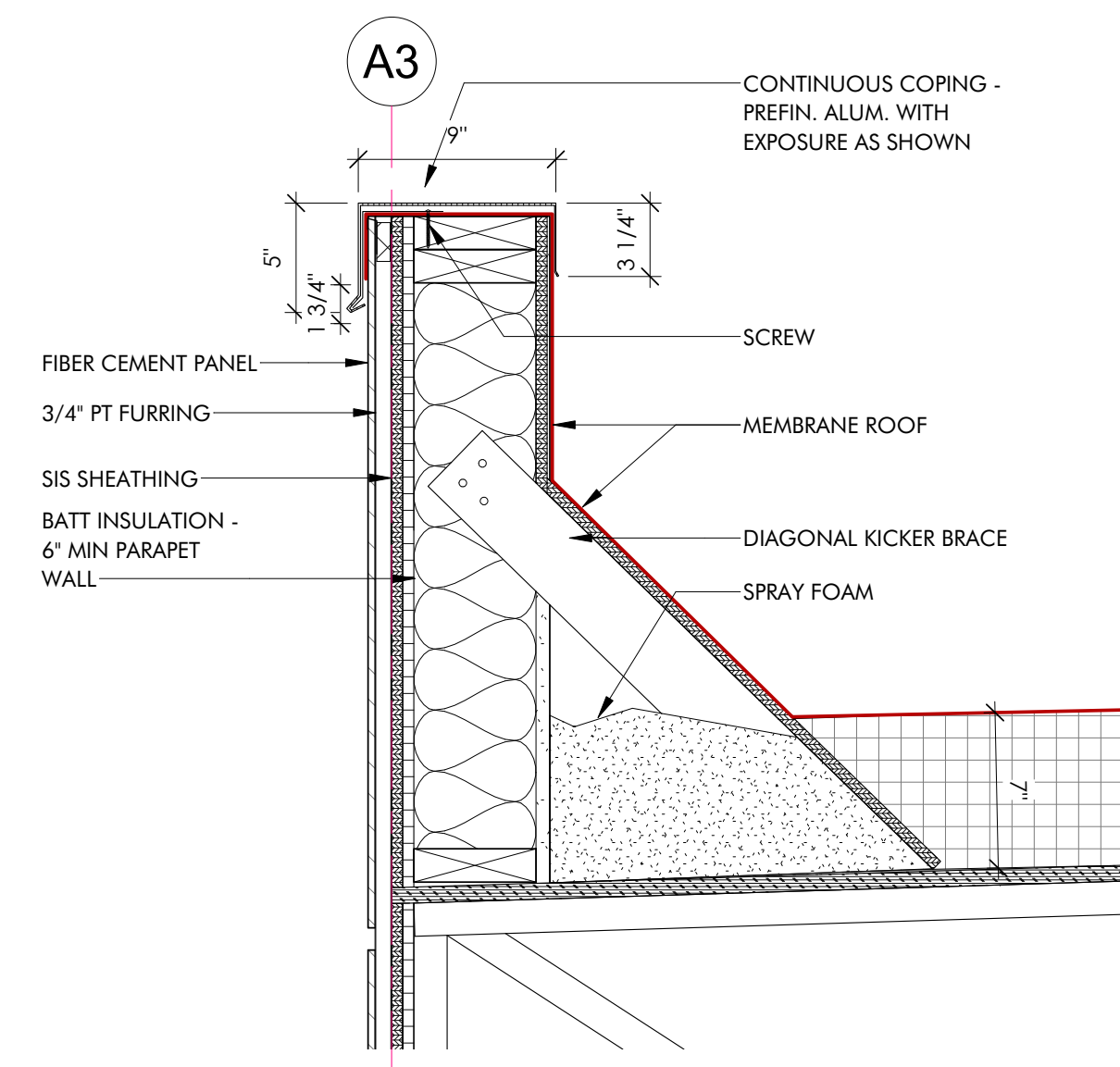
REVISIONS	
01/11/23	VHDA CONTRACT SET = 100% PERMIT DOCUMENTS DATED 07/01/22 WITH INTEGRATION OF ADDENDUM #1 DATED 11/30/22 - SEE ADDENDUM #1 FOR ALL RESPONSES

A-M-104-2

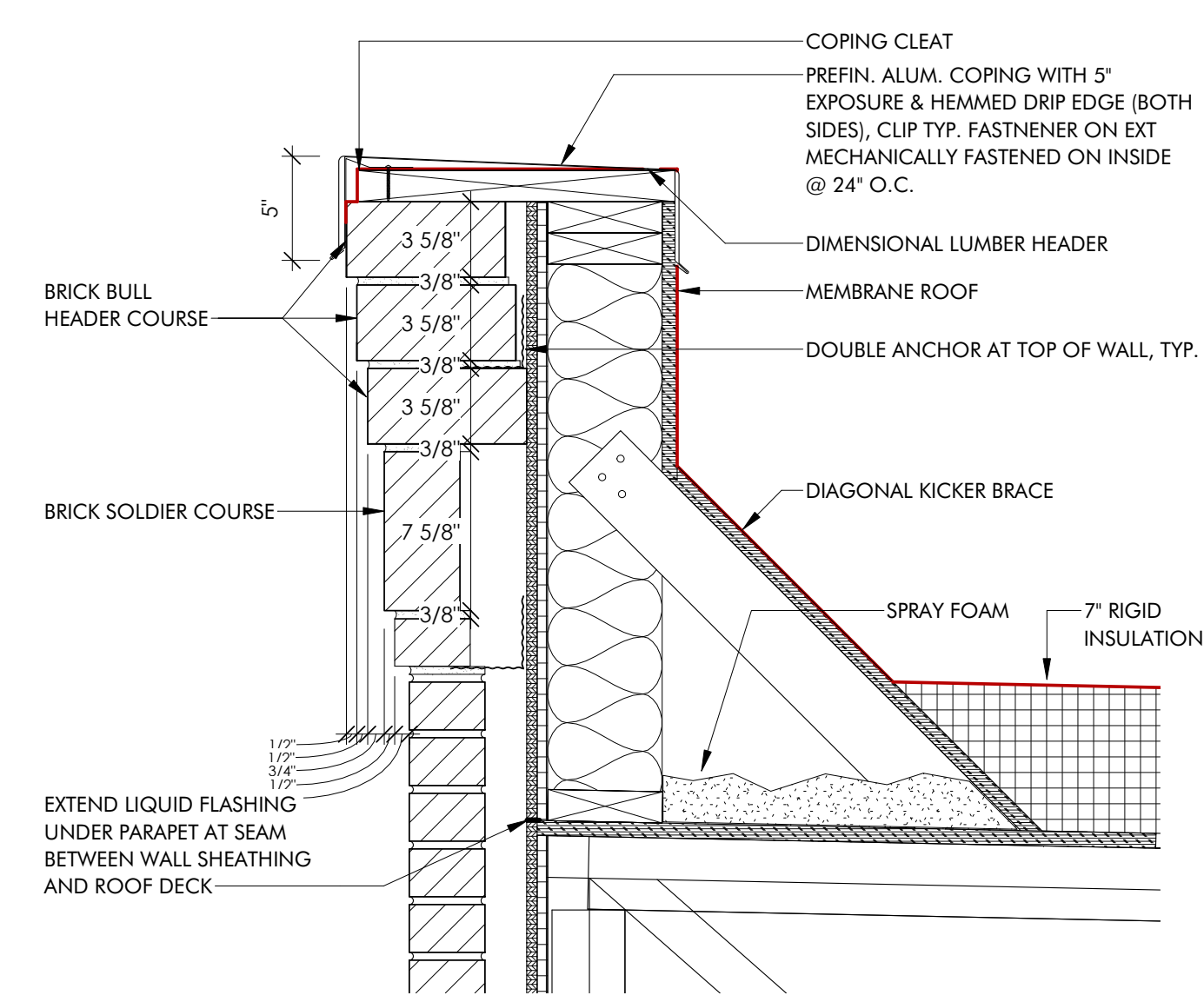
**ROOF APARTMENTS A
 MECHANICAL
 DUCTWORK PLAN**



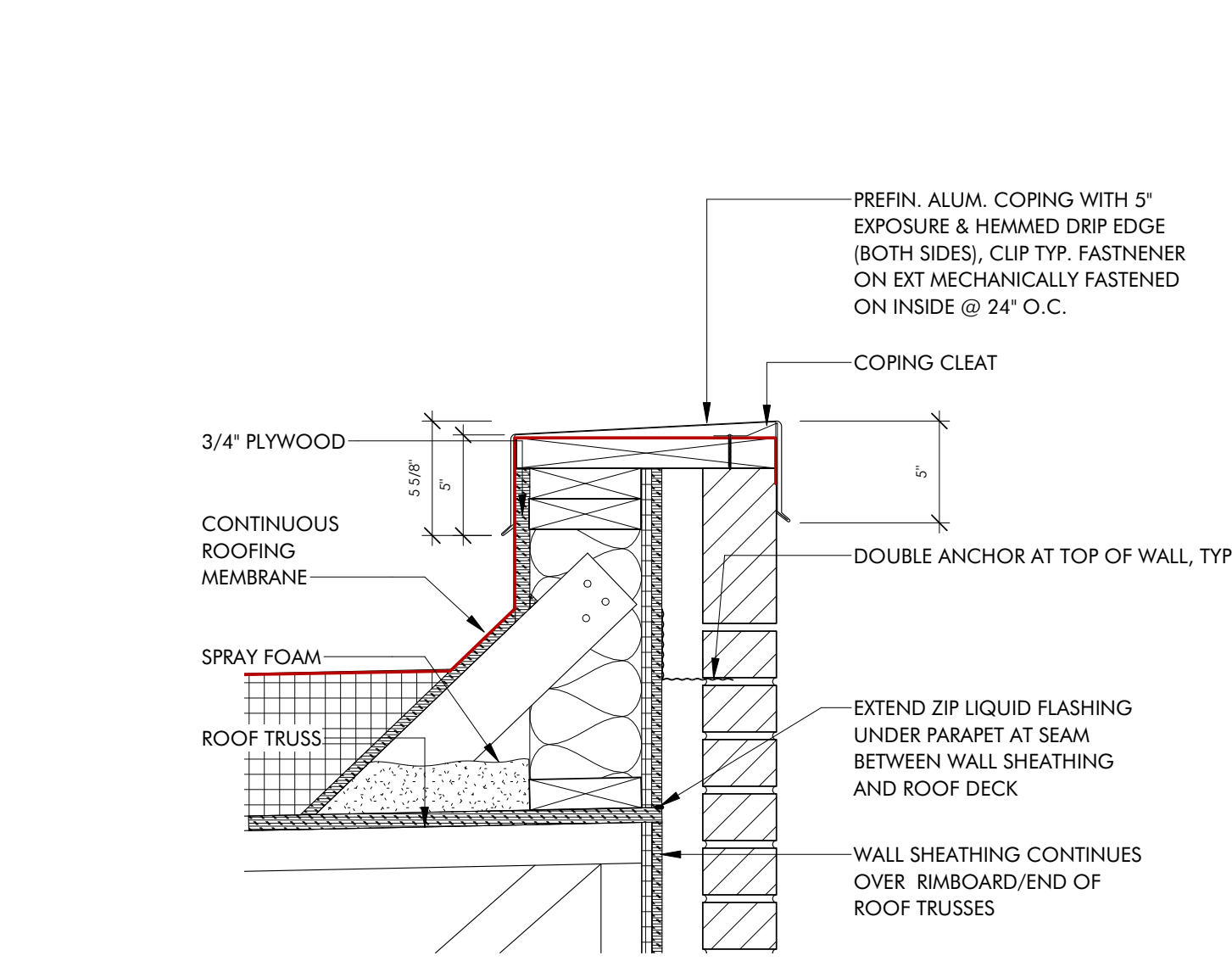
1 ROOF MECHANICAL DUCTWORK PLAN APARTMENTS A - BUILDING 2
 A-M-104-2 SCALE: 1/8" = 1'-0"



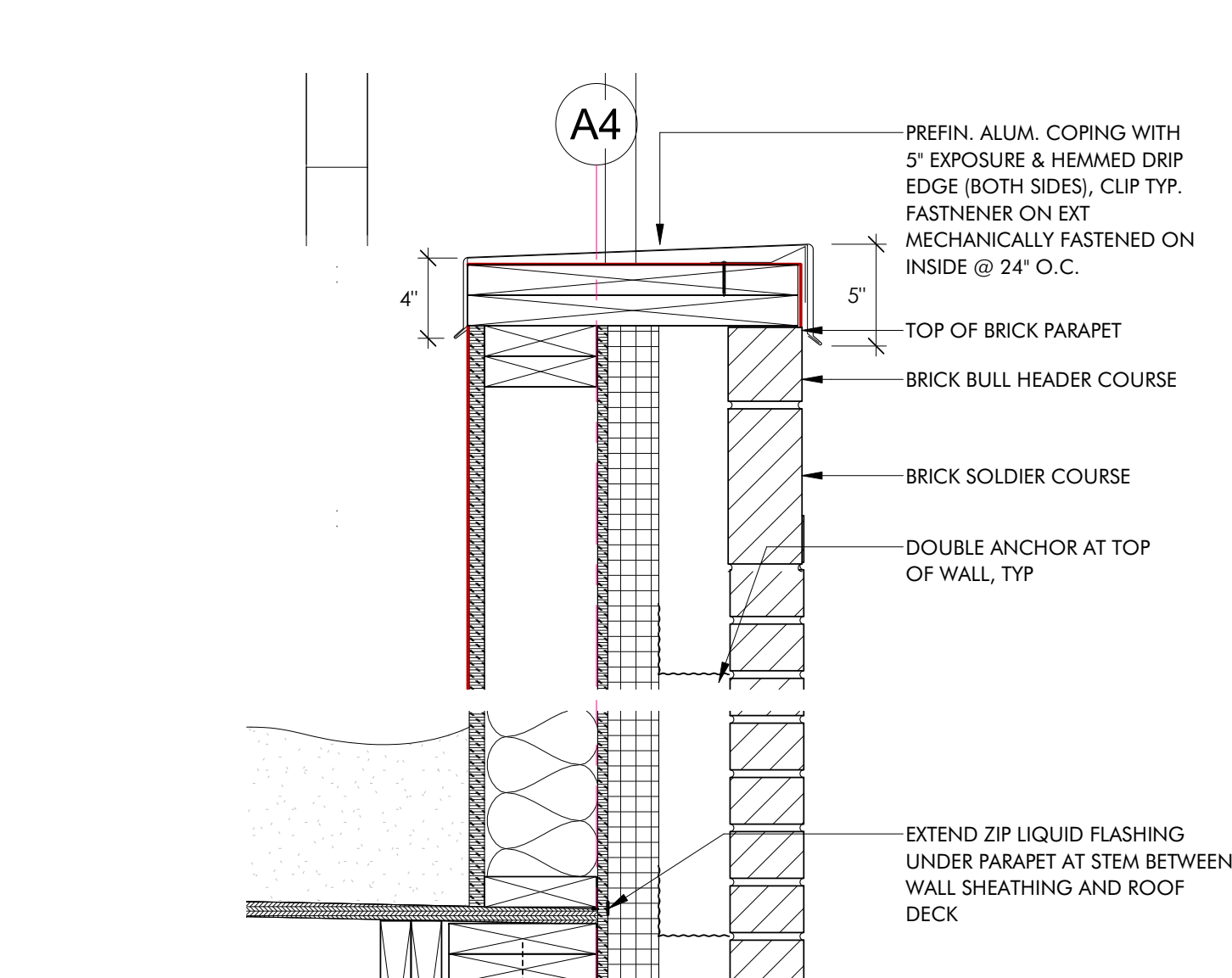
1 FIBER CEMENT PARAPET DETAIL
A7.3-12 1 1/2" = 1'-0"



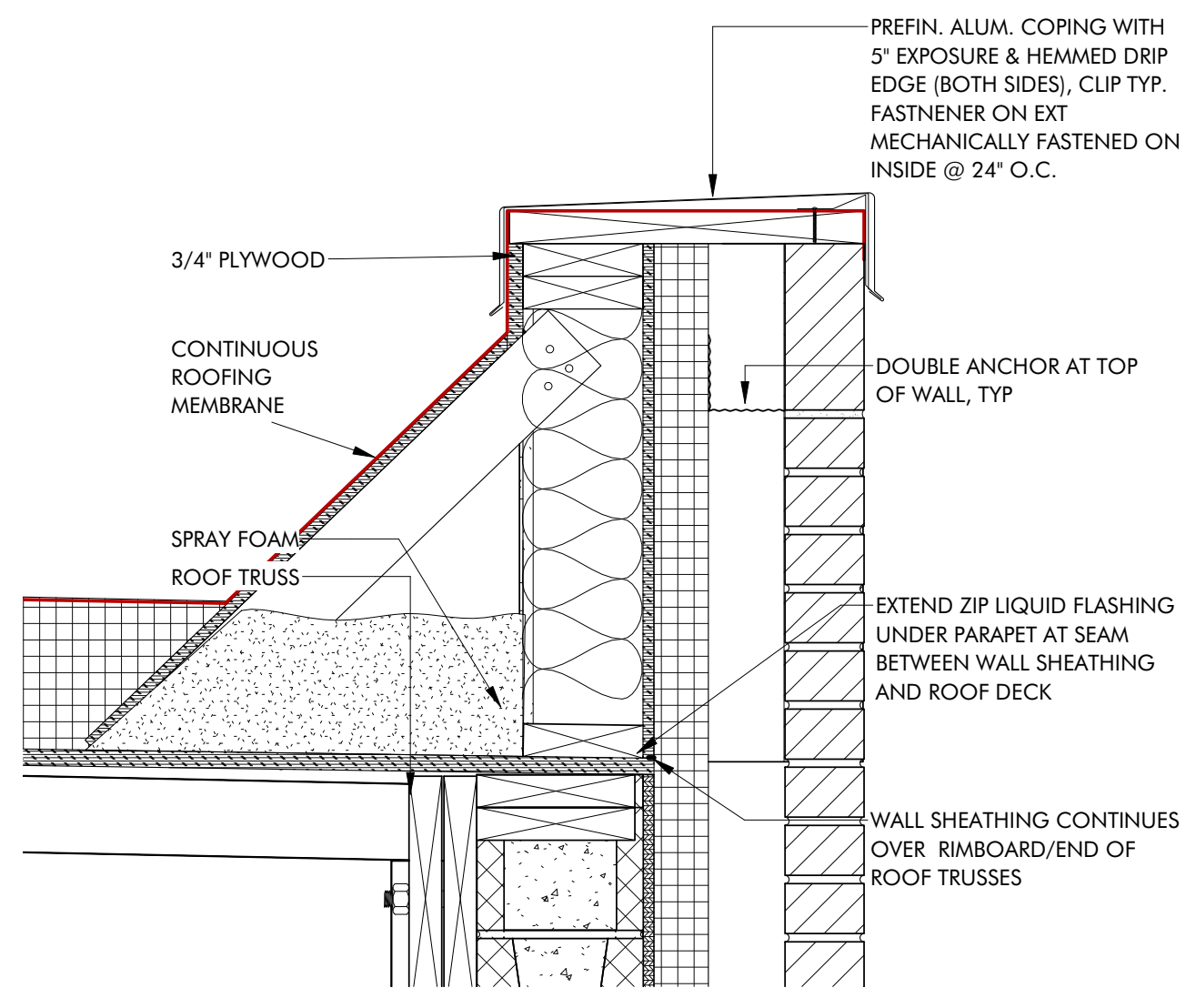
3 BRICK CORNICE AT CORNER BLOCK 12
A7.3-12 1 1/2" = 1'-0"



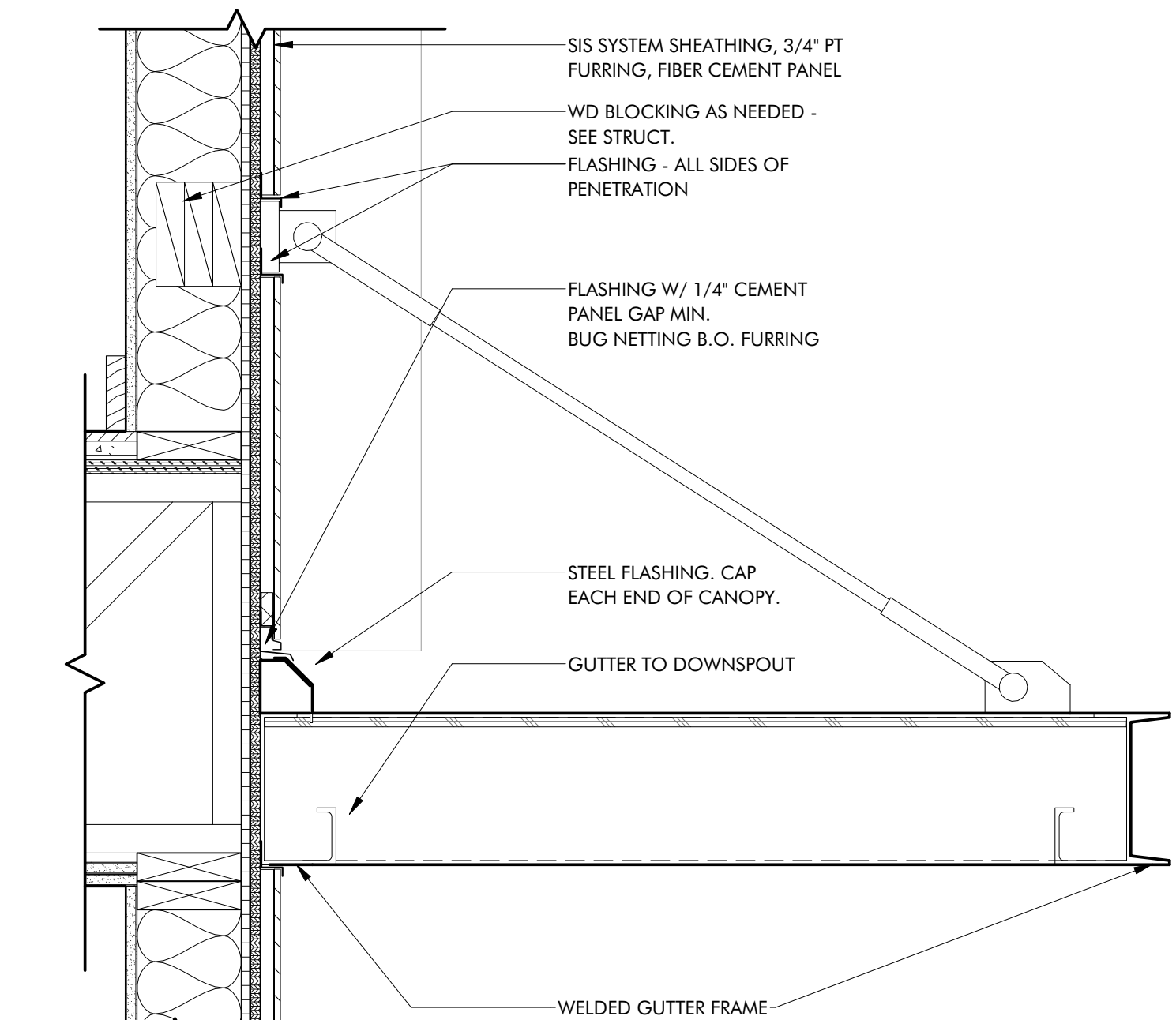
6 LOWER BRICK PARAPET CORNICE DETAILS
A7.3-12 1 1/2" = 1'-0"



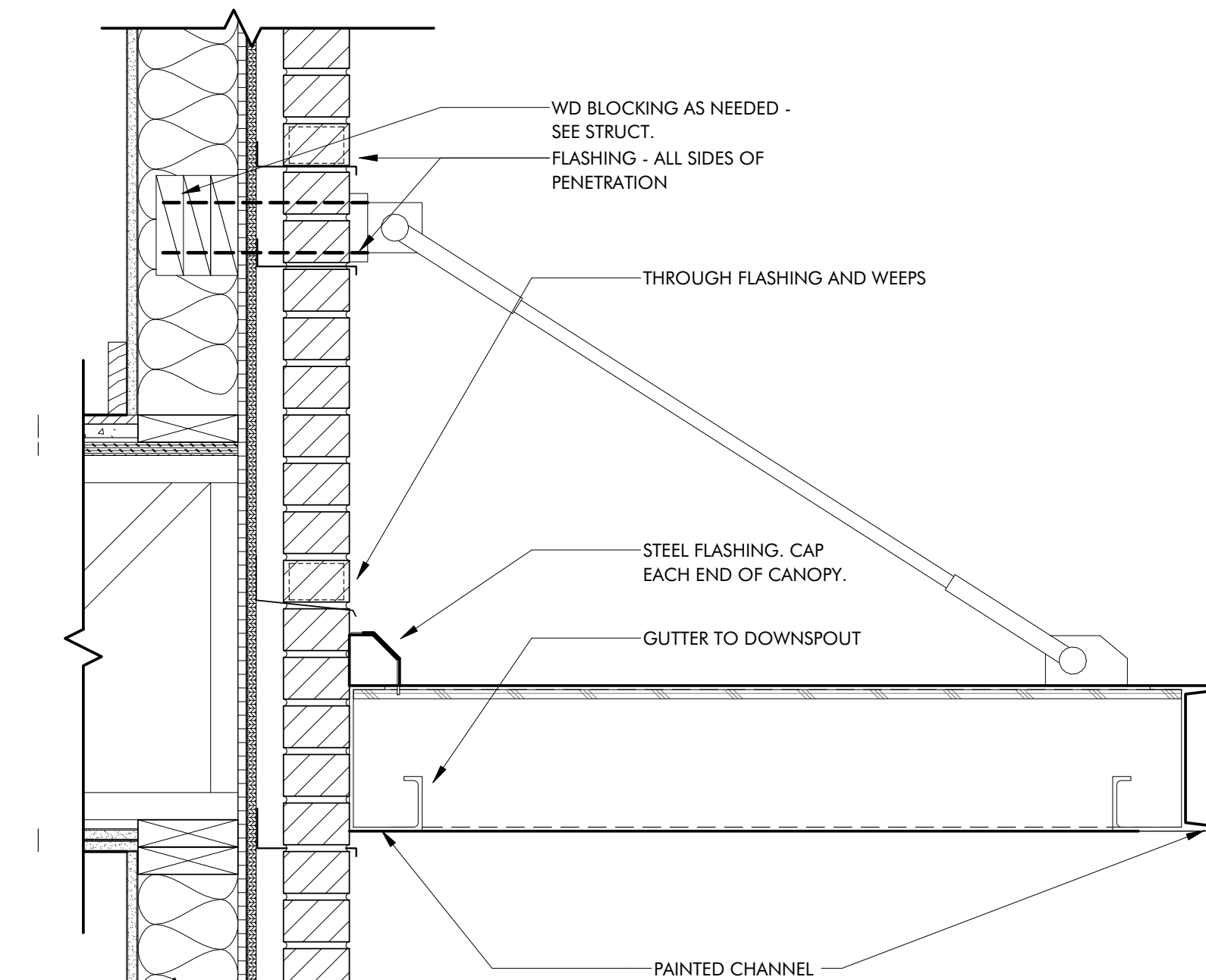
9 BRICK CORNICE (WALL TYPE VARIES - SEE PLAN)
A7.3-12 1 1/2" = 1'-0"



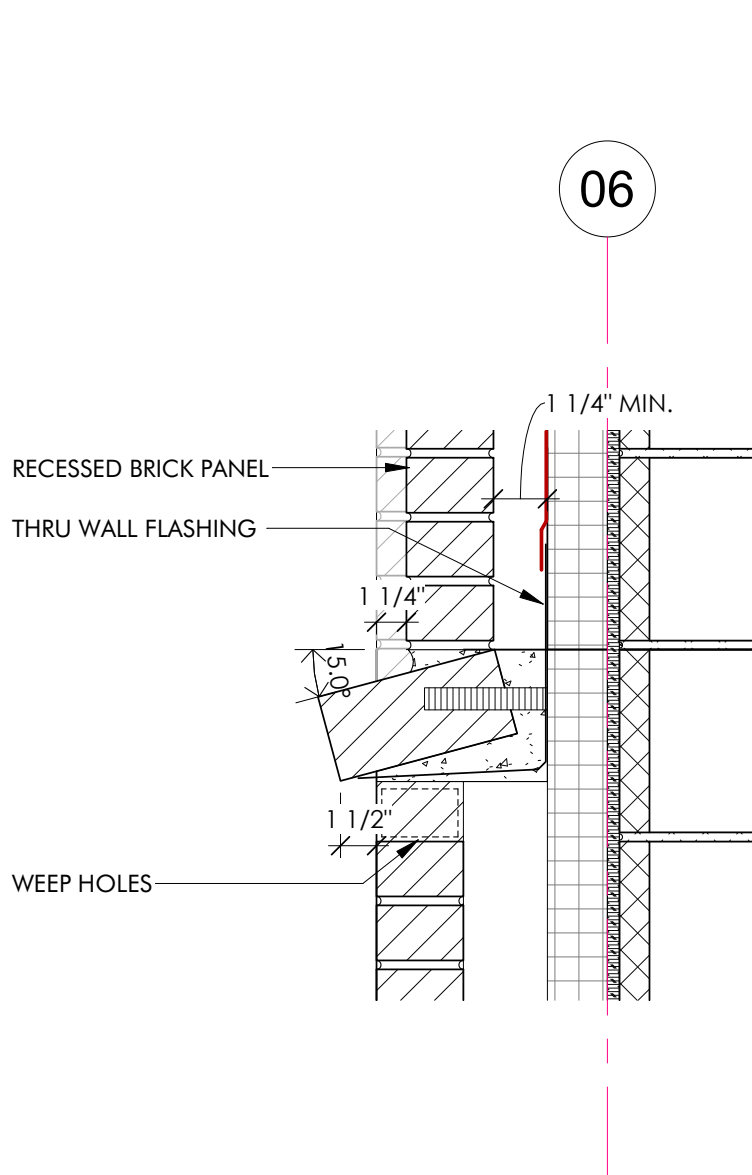
4 PARAPET CMU FRAMED WALL
A7.3-12 1 1/2" = 1'-0"



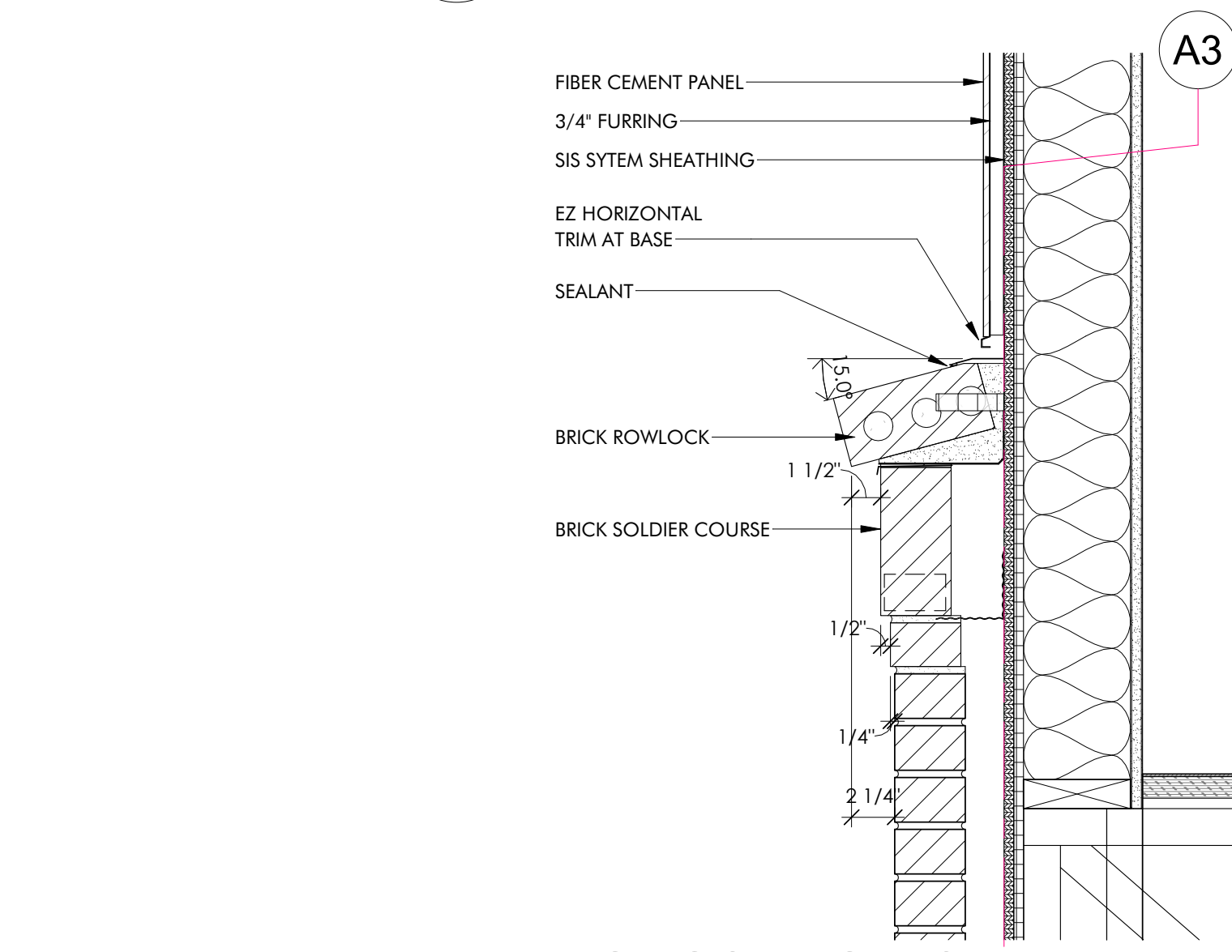
7 TYPICAL CANOPY SECTION APTS A - PANEL
A7.3-12 1 1/2" = 1'-0"



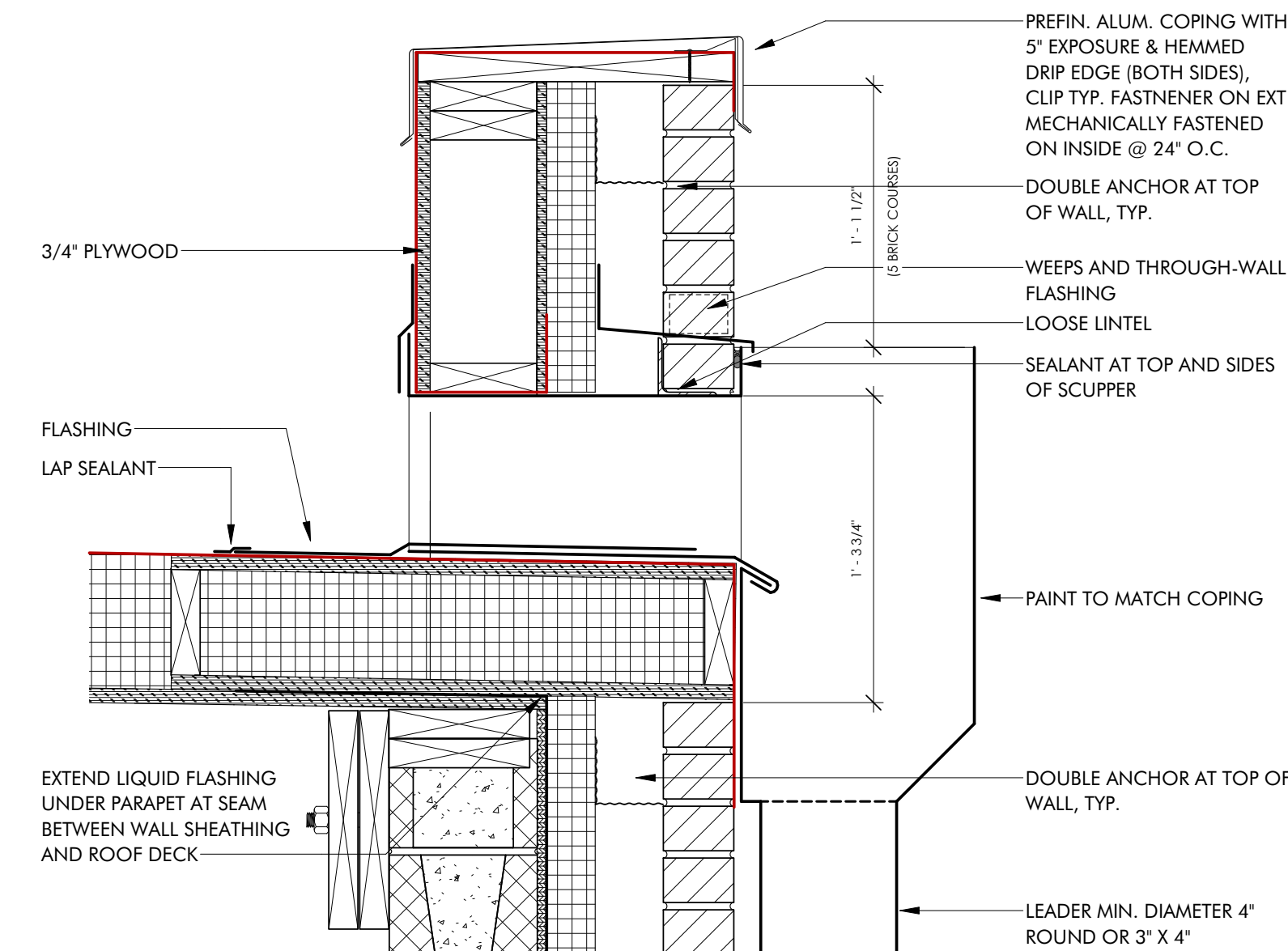
10 TYPICAL CANOPY SECTION APTS A - BRICK
A7.3-12 1 1/2" = 1'-0"



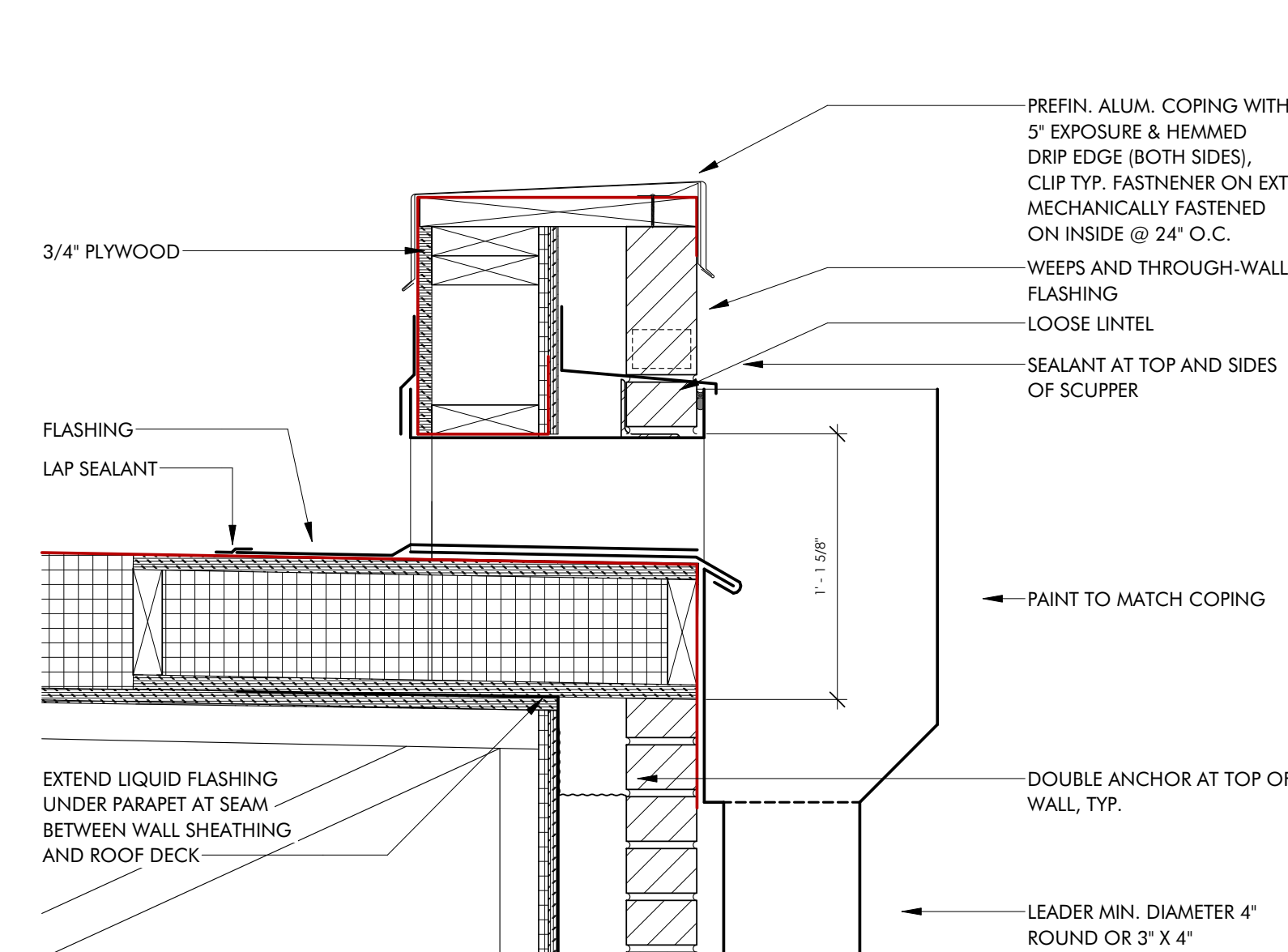
2 BRICK SILL AT RECESSED PANEL
A7.3-12 1 1/2" = 1'-0"



5 BRICK CORNICE TO CEMENT PANEL @ LEVEL 3 DETAIL
A7.3-12 1 1/2" = 1'-0"



8 SCUPPER - CMU AND BRICK
A7.3-12 1 1/2" = 1'-0"



11 SCUPPER - FRAME AND BRICK
A7.3-12 1 1/2" = 1'-0"

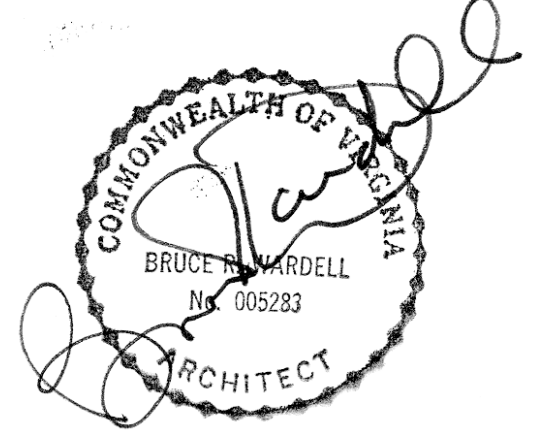
PHA @ Southwood

Southwood Apartments
Hickory Street
Charlottesville, VA 22902

FOR

Piedmont Housing Alliance

FOR CONSTRUCTION



JOB NUMBER	19048
DATE	01/11/23
DRAWN BY	TM
APPROVED BY	WM, KK
2020	© brwarchitects, p.c.

VHDA CONTRACT SET

REVISIONS	
08.01.22	VH COMMENTS RESPONSE
01/11/23	VHDA CONTRACT SET - 100% PERMIT DOCUMENTS DATED 07/01/22 WITH INTEGRATION OF ADDENDUM #1 DATED 11/30/22 - SEE ADDENDUM #1 FOR ALL RESPONSES.

A7.3-12

DETAILS

C:\Revit\Local\19048_PHA_Southwood_CENTRAL_V2021_wmdermot55K5Z.rvt 1/17/2023 9:34:44 AM TM