

ROUTE 20 SHARED USE PATH CONCEPTUAL DESIGN STUDY



5th and Avon CAC

June 15, 2023

Conceptual Design Study Purpose

This study will...

- Investigate the feasibility of a bike and pedestrian connection along Rt 20 from Quarry Road to Rt 53
- Develop a concept plan
- Develop a rough cost estimate for construction

This study will NOT...

- Complete preliminary engineering for a final design
- Result in immediate construction

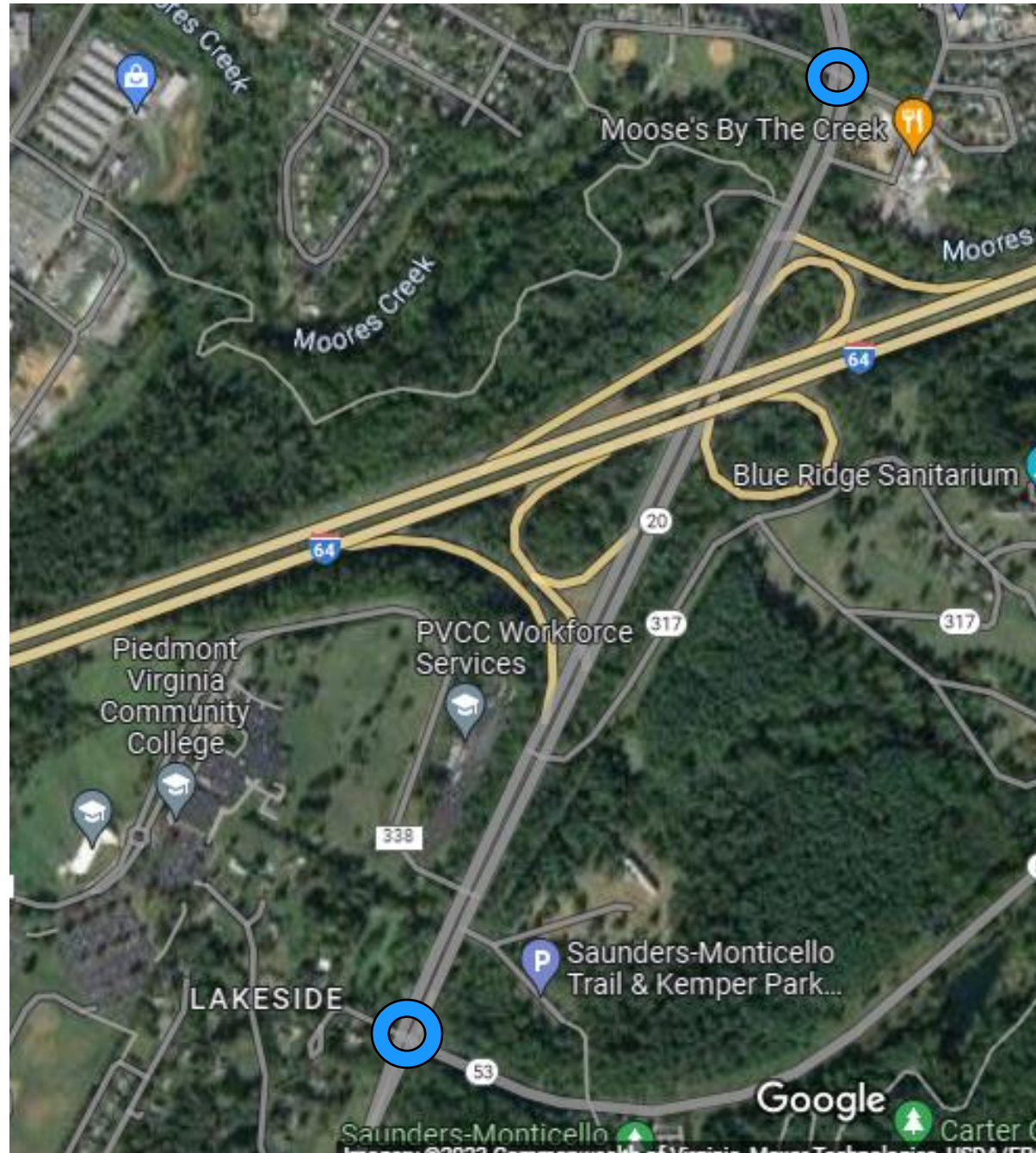
Conceptual Design Study Process



Why a Shared Use Path here?

- Improve access to educational, cultural, and employment opportunities (PVCC and Monticello) regardless of income or ability to drive
- Address a gap in the bicycle and pedestrian network
- Create infrastructure for road users of all ages and abilities
- Identified as a high priority connection in the Jefferson Area Bike and Pedestrian Plan (2019) and the Southern and Western Urban Neighborhoods Master Plan (2015)

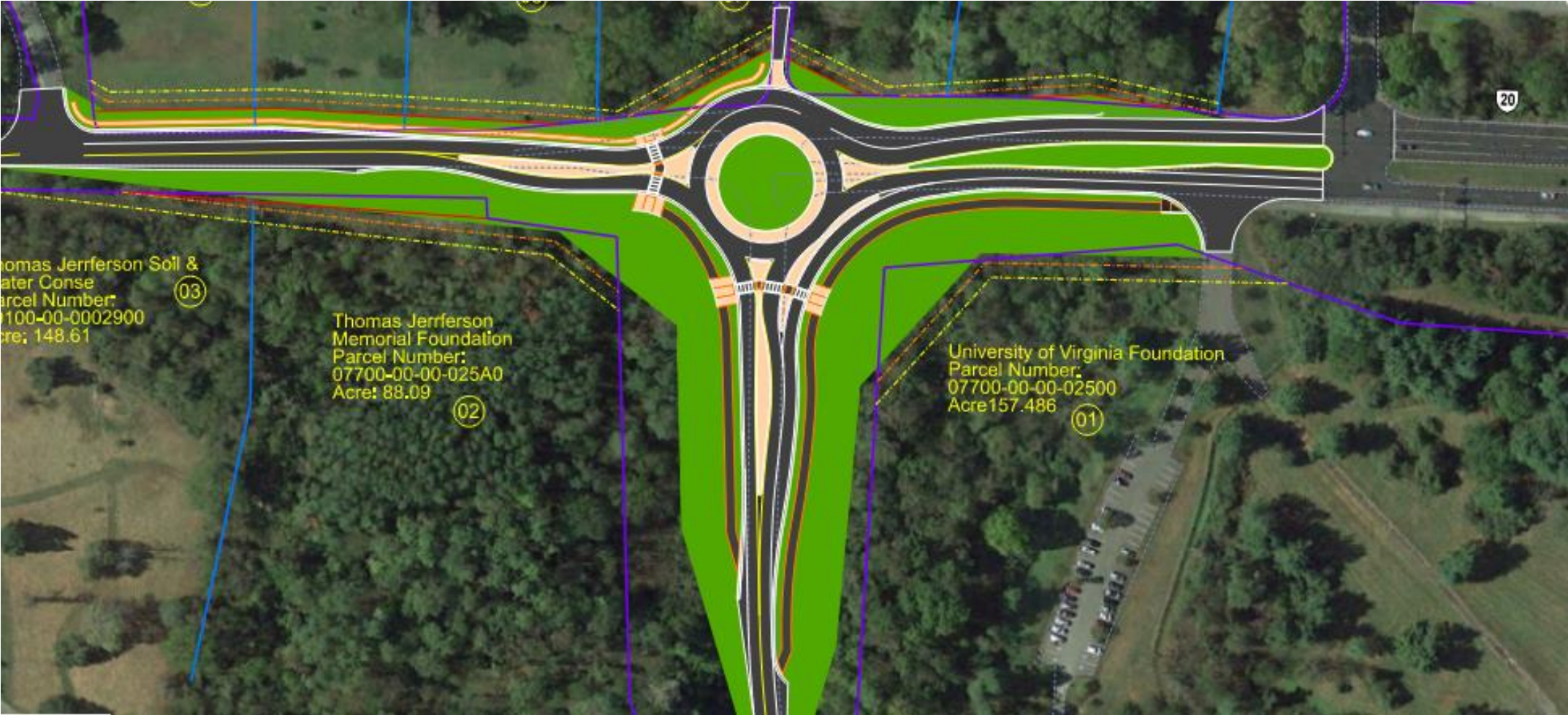
Study Area



Study Area



Study Area

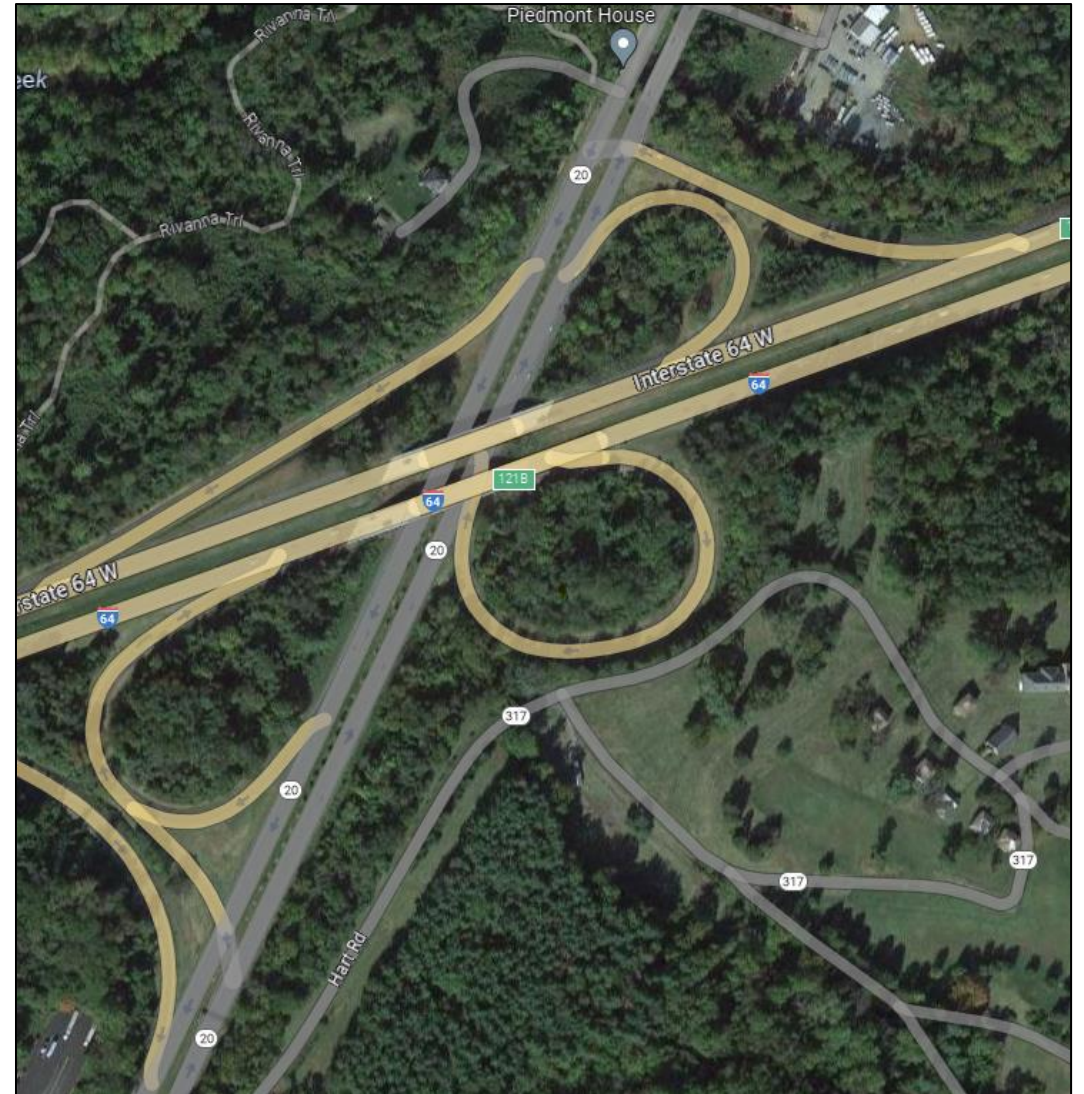


Route 20 Today

- 45mph speed limit in the County, 35mph in City
- 17,000 vehicles per day
- Classified as a “minor arterial”
- Crash history
- Engineering challenges...

Engineering Challenges

Higher-speed, free-flow ramps on both East and West sides of roadway



Engineering Challenges



Width limitations imposed by I-64

Engineering Challenges



Width limitations imposed by bridge over Moore's Creek

Engineering Challenges



Guardrail close to pavement, challenging topography



Engineering Challenges



Charlottesville Area Tree Stewards “Monticello Gateway” Planting Project of 73 native trees



CONCEPT DESIGNS



Concept Design Basics

A Shared Use Path typically includes:

- Curb and Gutter (typically 2.5')
- 8' buffer*
- 10' path*
- 3' behind trail edge



Concept Designs



THANK YOU

