



Community
Advisory
Committee
Meetings

 Charlottesville/Albemarle MPO



MOVING TOWARD

2050

LONG RANGE TRANSPORTATION PLAN

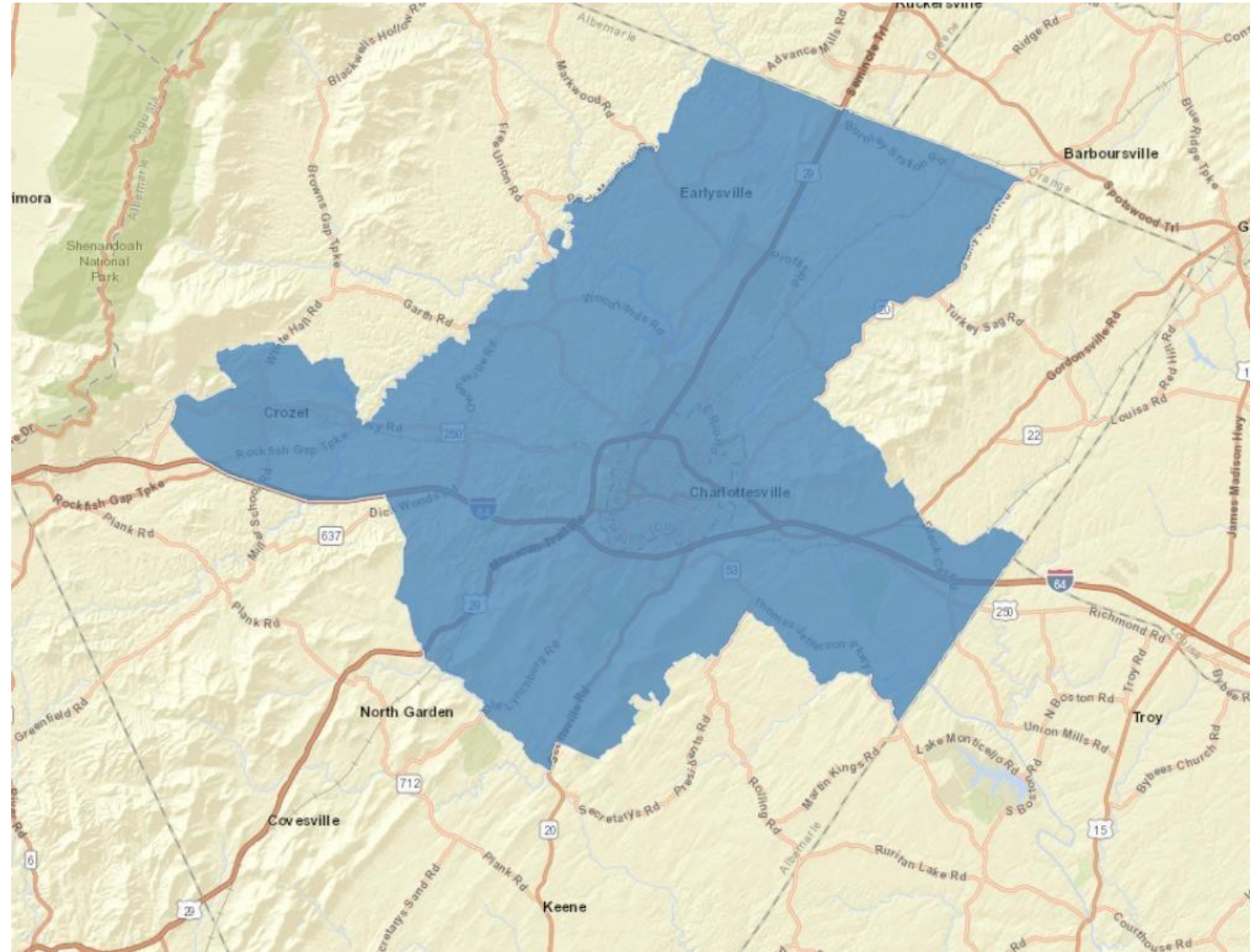


Discussion Goals

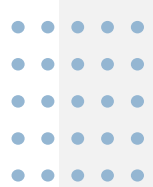
- Introductions
- Moving Toward 2050 Overview
- Goals and Objectives
- Discussion
- Create awareness and understanding of Moving Toward 2050
- Receive feedback on transportation priorities
- Hear about transportation system challenges and needs

What is Moving Toward 2050?

- Federally-mandated Long Range Transportation Plan
- Uses a planning horizon of at least 25 years
- Updated every five years
- Developed by the Charlottesville Albemarle MPO
- Responsible for carrying out continuing, cooperative, and comprehensive transportation planning and programming processes
- Includes the City of Charlottesville and urbanized portions of Albemarle County



- Considers systemwide needs across all modes of transportation



What does the plan do?

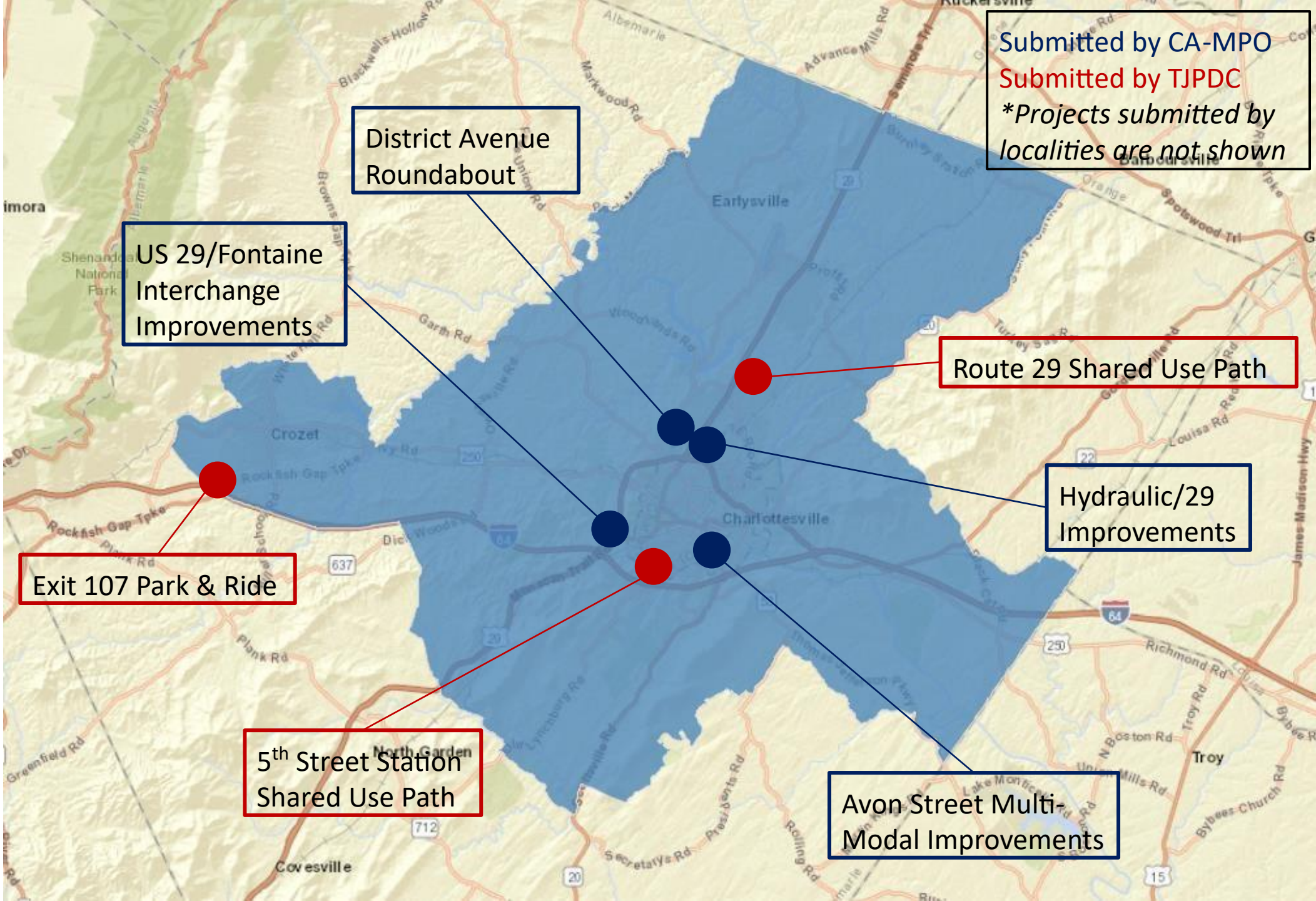
- Bike
- Pedestrians
- Transit
- Roadways
- Establishes priorities for investments into the transportation system
- Answers questions such as:
 - Does the existing transportation system get you where you need and want to go safely and efficiently?
 - Is there a need for better connected sidewalks or bike infrastructure?
 - Where are the biggest safety needs?

- How can we best improve access to places where people need or want to go?



Why is the plan important?

- The required outcome of the Long Range Transportation Plan is a list of prioritized transportation improvement projects
- Federal funding eligibility
- Limited funding opportunities
- Competitive funding programs
- Establish planning pipeline



Submitted by CA-MPO
Submitted by TJPDC
*Projects submitted by localities are not shown

District Avenue Roundabout

US 29/Fontaine Interchange Improvements

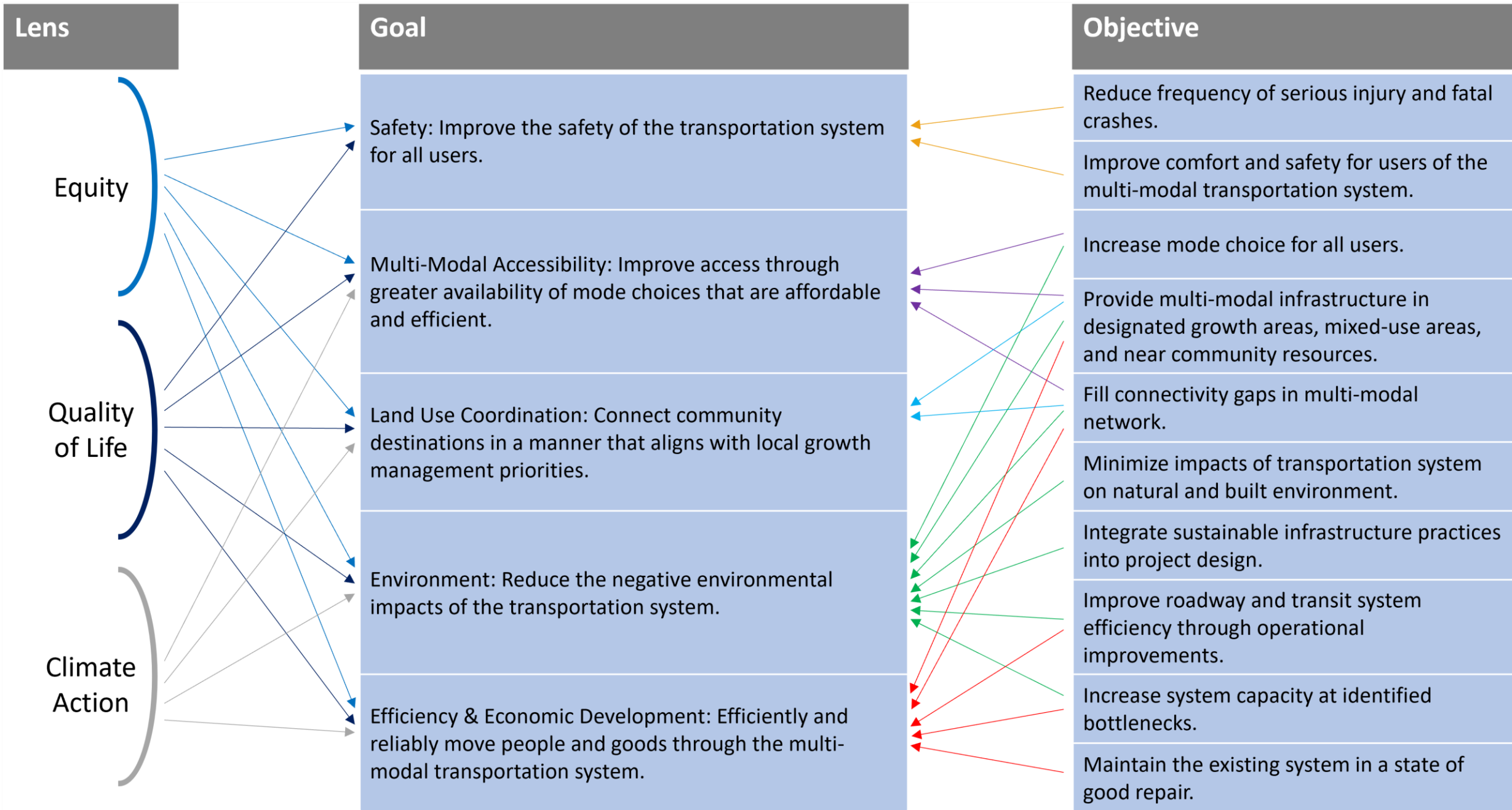
Route 29 Shared Use Path

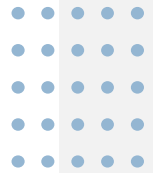
Hydraulic/29 Improvements

Exit 107 Park & Ride

5th Street Station Shared Use Path

Avon Street Multi-Modal Improvements





Discussion & Feedback

- Introductions
 - Name
 - How long have you been in the area
 - One Transportation Priority

- Develop comprehensive list of previously identified projects



Future Project Phases

- Identify projects that support high priority needs
- GET MORE PUBLIC FEEDBACK!
- Identify gap needs
- Planning priorities

Questions/Comments

Project Website: <https://campo.tjpd.org/process-documents/lrtp/2050-lrtp/>
Sandy Shackelford: sshackelford@tjpd.org