

New Southern Feeder Pattern Elementary School

Community Advisory Committee Meeting - 9/21/2023

Building Overview - New Southern Feeder Pattern (SFP) Elementary School

- Site initially proposed for High School Center II - Comprehensive Plan Compliance Review completed for this usage in 2020
- Site proposed for New SFP Elementary School based on capacity issues at Mountain View Elementary
- Approximately 72,500 SF with a capacity of 500 elementary students
- Interior: Classrooms, cafeteria, media center, gymnasium, administrative spaces, breakout rooms, and support spaces
- Exterior: Parking lot, bus loop, field spaces, playground spaces
- Compliance with Virginia High Performance Buildings Act
- Goal of net-zero ready



Buckingham Primary + Elementary (Buckingham County, VA)

Variety of Spaces to Meet a Variety of People

VMDO



Outdoor Learning and Play

Conceptual Plan and Community Connectivity

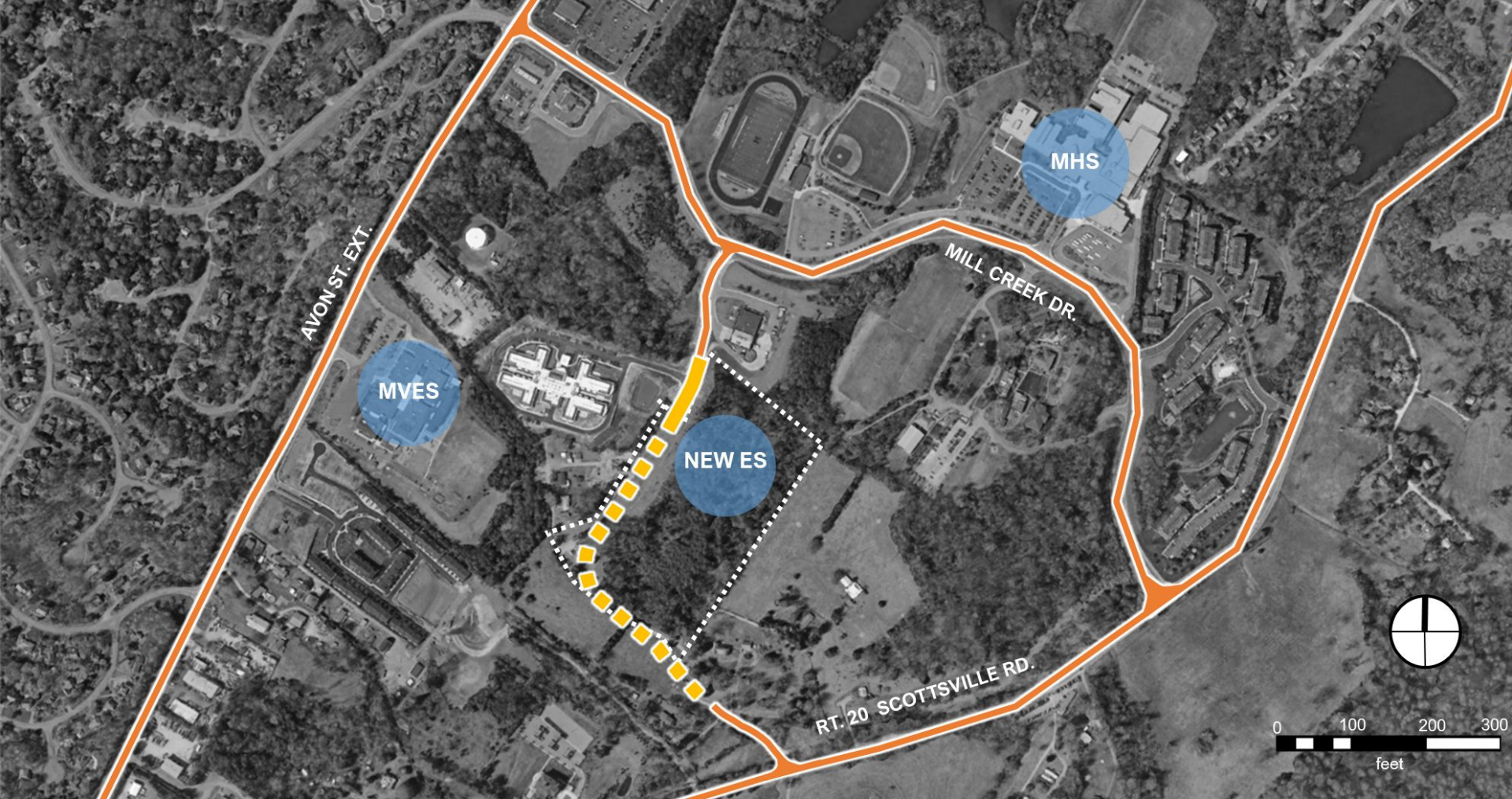
MVES

NEW ES

COUNTY-OWNED
PARCELS



0 100 200 300
feet



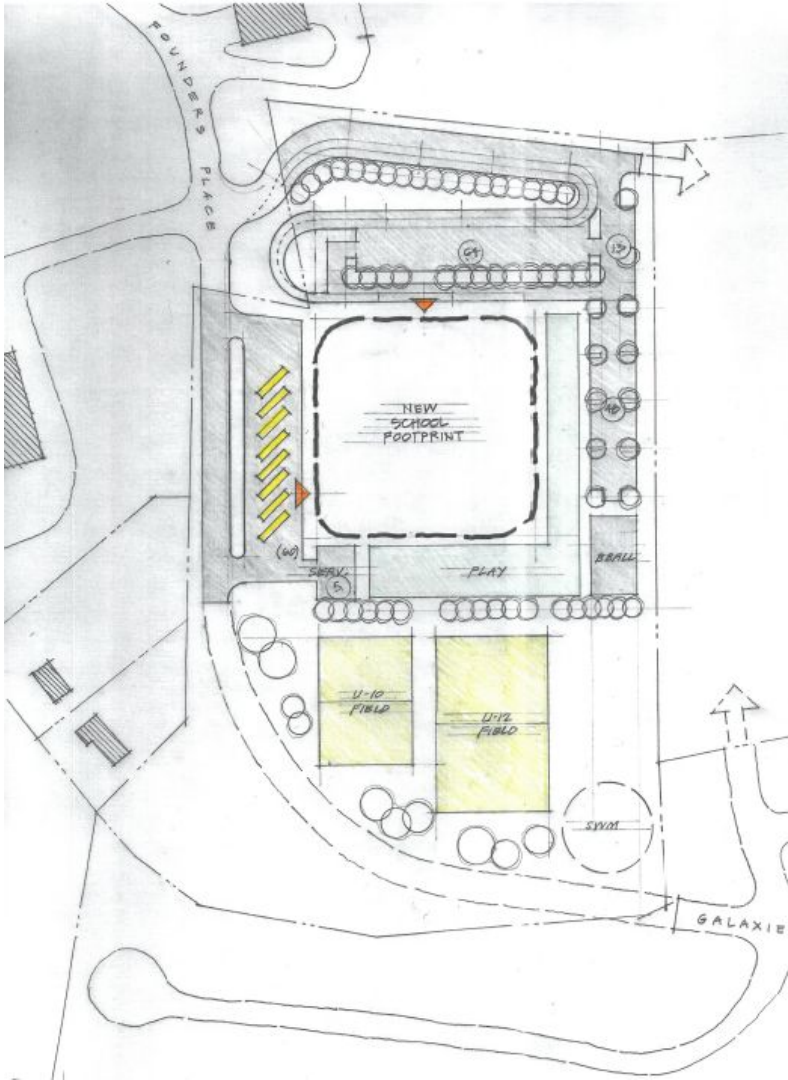
New Southern Feeder ES Site Analysis - Challenges + Opportunities



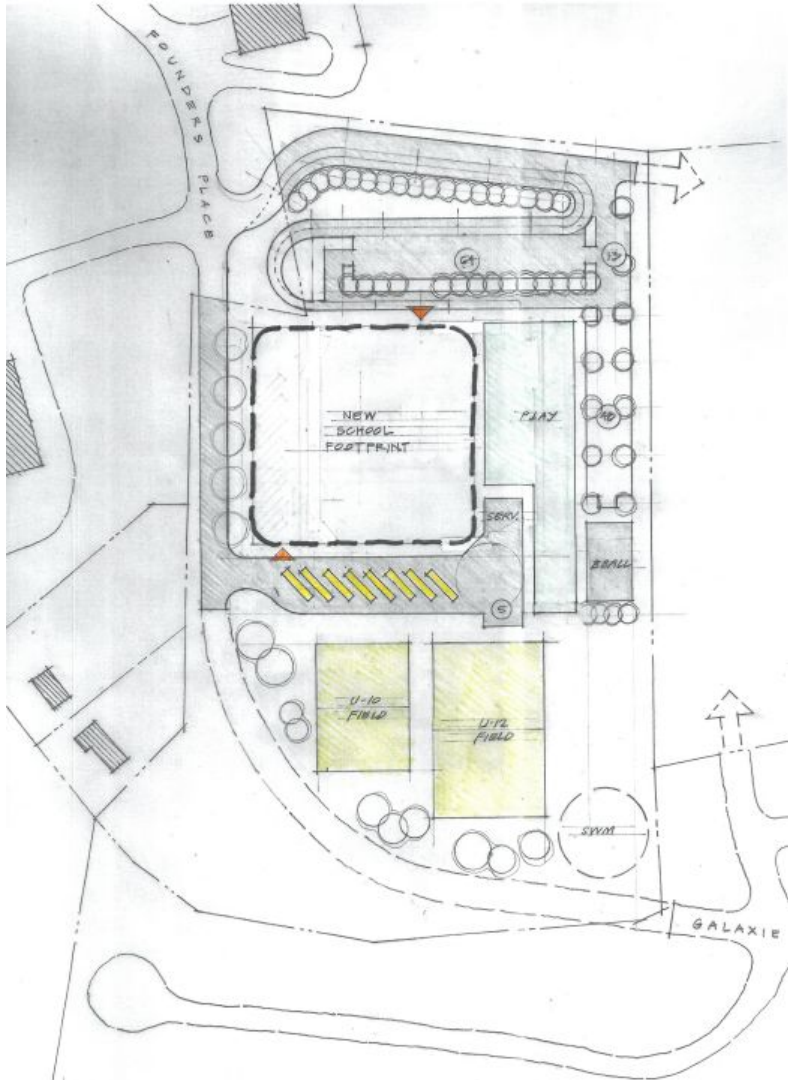
Building and Site Character

- Design not dependent on the connection Founders Place/Galaxie Farm Road
- 2-story or 3-story building
- Maximize daylighting and views
- Drop-off queuing space of ~100 cars to eliminate conflict with inbound and outbound traffic
- Sports fields, paved basketball court, outdoor play space

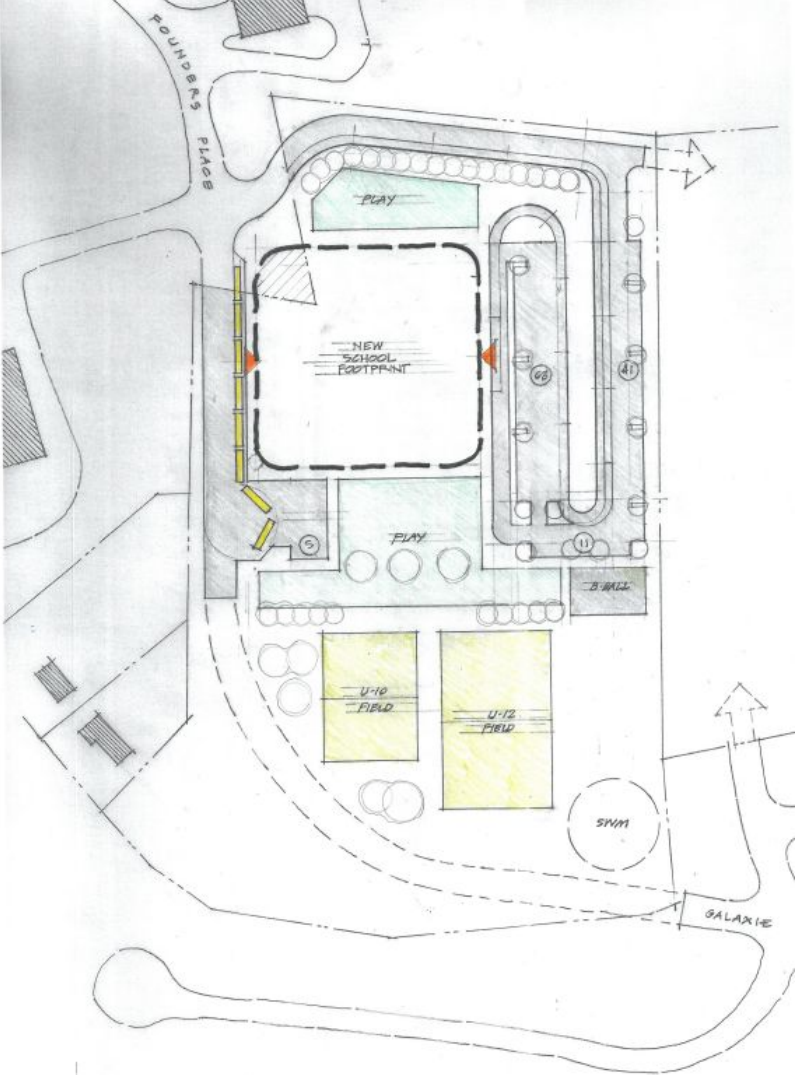
Conceptual Plan A



Conceptual Plan B



Conceptual Plan C

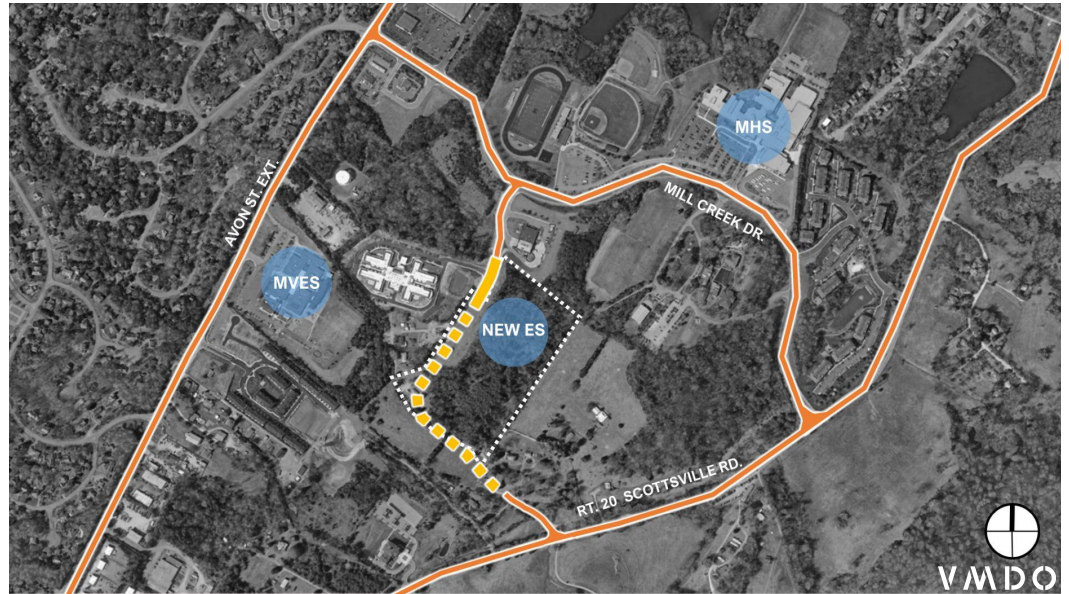


Traffic Impacts

Mode of Travel	Number of Vehicles (Estimate)	Number of People (Estimate)	Access Times
Bus	4 large buses 1 small bus	425	Drop-off: 7:40 - 7:55 am Pick-up: 2:40 - 3:00 pm
Parent Drop-off	60	75	Drop-off: 7:40 - 7:55 am Pick-up: 2:40 - 3:00 pm
Car	100	100 total (85 ACPS staff; 15 visitors)	Arrival: 7:30 - 7:50 am Dismissal: 3:15 - 4:00 pm
Walking/Biking	0	20	Arrival: 7:40 - 7:55 am Dismissal: 2:40 - 3:00 pm

Neighborhood Model Design - Interconnected Streets & Transportation Networks

The design and placement of the building will not impede future interconnected street plans to the County's adjacent parcels (Parcels 09100-00-00-01000 and 09100-00-00-008B0).



Neighborhood Model Design - Parks, Recreational Amenities & Open Space

- Incorporation of outdoor learning spaces
- Community usage amenities
- Fields
- Playgrounds

Community Usage

- High-demand area for community usage of buildings
- School Board Policy KG, *Community Use of School Facilities*
- Elementary School field usage coordinated by Parks & Rec
- Project will assist with County's field deficiency



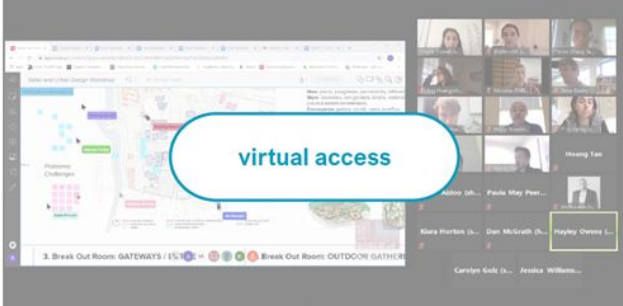
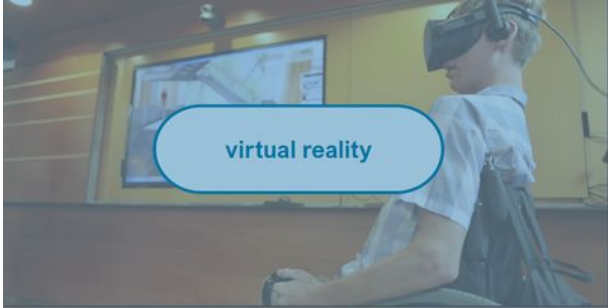
Community Usage - Historical Demand

- Over the past 5 years, Mountain View Elementary has facilitated over 6,000 events and 55 users that represent the ACPS and Community Groups
- Boy and Girl Scouts, Parks and Recreation programs, and HOAs. It has been the home for the Toy Lift, Black History Nights and Soulfest, Hispanic Heritage Nights, and Family Literacy Nights
- Increased demand for facility space for community usage



Next Steps

- Planning Commission Meeting on October 24th
- Community Engagement



Project Schedule

Milestone	Timeline
Programming	July - September 2023
Schematic Design	September 2023 - December 2023
Design Development	January 2024 - May 2024
Site & Utility Plan Development	November 2023 - September 2024
Bidding/Construction	September 2024 - July 2026
School Opens	August 2026