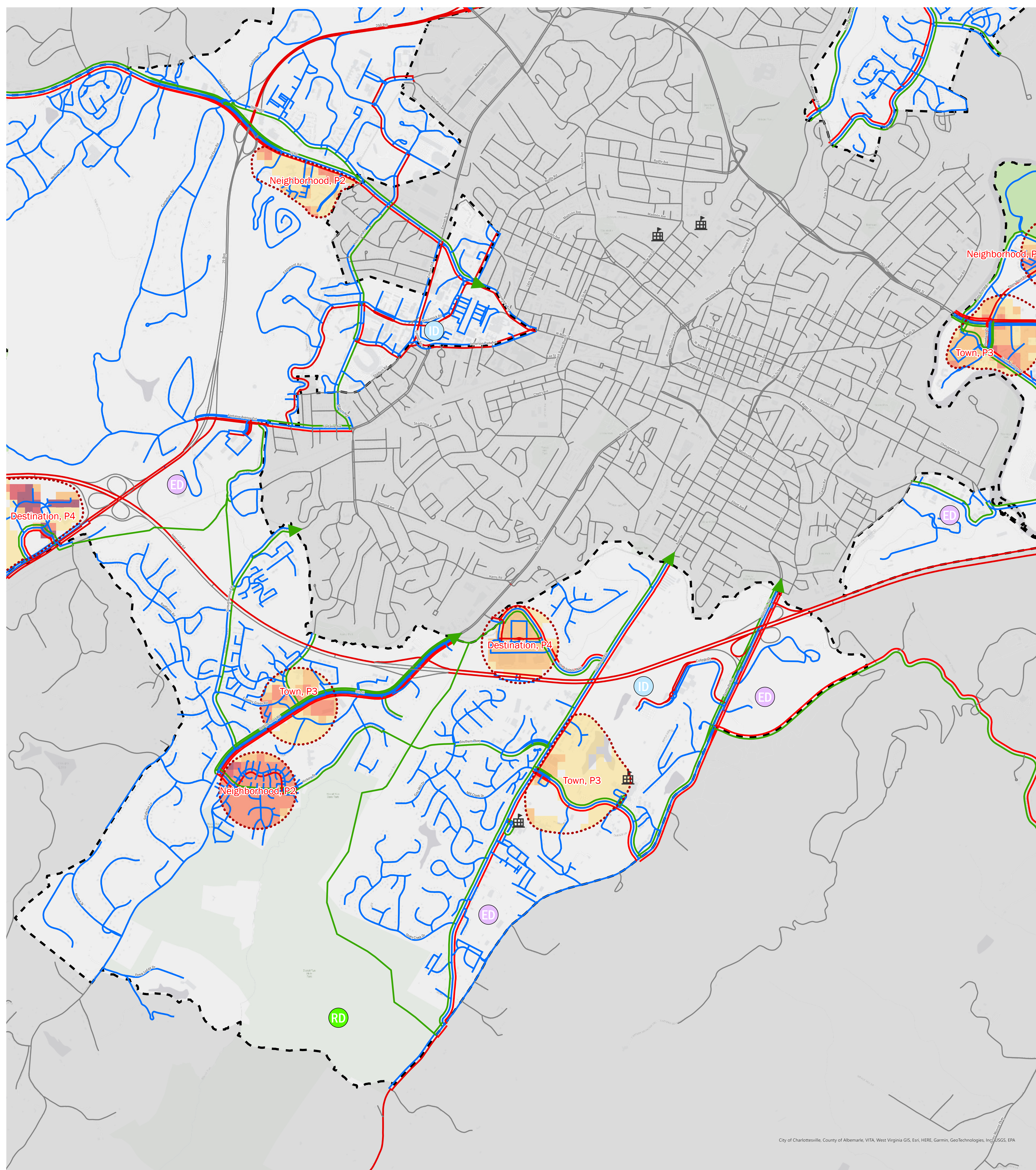


Southwest - AC44 Draft Modal Emphasis



LEGEND

- Existing Features**
- Development Areas/ Multimodal District
 - Roads
 - Modal Emphasis**
 - Pedestrian
 - Transit
 - Bicycle
 - Pedestrian/Transit
 - Pedestrian/Bicycle
 - Bicycle/Transit
 - Pedestrian/Transit/Bicycle
 - No Modal Emphasis
 - Employment District
 - Institutional District
 - Recreational District
 - Schools
 - Parks

- Activity Density**
- Multimodal Centers
 - Current + Potential Activity Density**
 - T1 <=1
 - T2 <=10
 - T3 <=25
 - T4 <=60
 - T5 <=100
 - T6 100+



NOTES:

DRAFT DECEMBER 2023 - This a draft map for public review and comment and does not represent finalized County policy.

Activity Density is the sum total of people plus jobs per acre.

The modal emphasis map shows a vision for 2044, it does not represent existing county facilities.