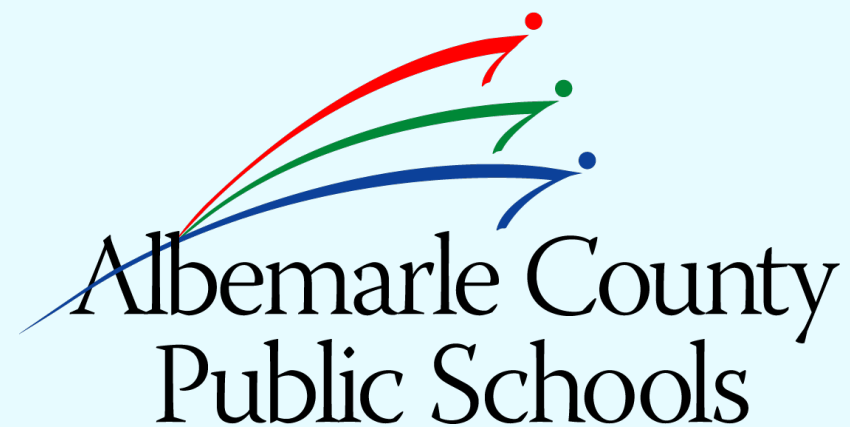


High School Center II & Southern Feeder Pattern ES Project Updates

May 13, 2024



Strategic Plan: Learning for All

VISION

Our learners are engaged in authentic, challenging, and relevant learning experiences, becoming lifelong contributors and leaders in our dynamic and diverse society.

MISSION

Working together as a team, we will end the predictive value of race, class, gender, and special capacities for our children's success through high-quality teaching and learning for all. We seek to build relationships with families and communities to ensure that every student succeeds.

We will know every student.

VALUES

Equity
Excellence
Family and Community
Wellness

GOALS



Thriving Students



Affirming and Empowering Communities



Equitable, Transformative Resources



High School Center II



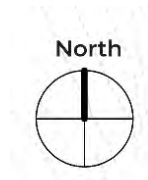
High School Center II *Will...*

- 1. Serve 400 students per day; expandable to 600 students**
- 2. Be 60,000 sf and 2 stories, expandable to 90,000 sf**
- 3. Be adaptable to varied student cohorts and future learning**

...and redesign the high school experience.



Lambs Lane Campus Context





Lambs Lane Campus Circulation



- AHS Main Entrance
- Parent Drop-Off Zone
- New Pedestrian Pathway Between Schools
- HSCII Main Entrance
- HSCII Courtyard
- Geothermal Wellfield
- Kitchen Entry
- New Bike and Walking Pathway into Campus
- Data Center + Mech Room Entry

High School Center II - Site Plan

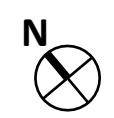




PROGRAM AREAS

- ADMIN
- COMMONS
- CORRIDOR
- KITCHEN
- PROJECT STUDIOS
- MEETING SPACES
- SERVICE/STORAGE
- SPECIALTY STUDIOS
- LEARNING STUDIOS
- TEACHER COLLABORATION
- TOILETS
- WELLNESS

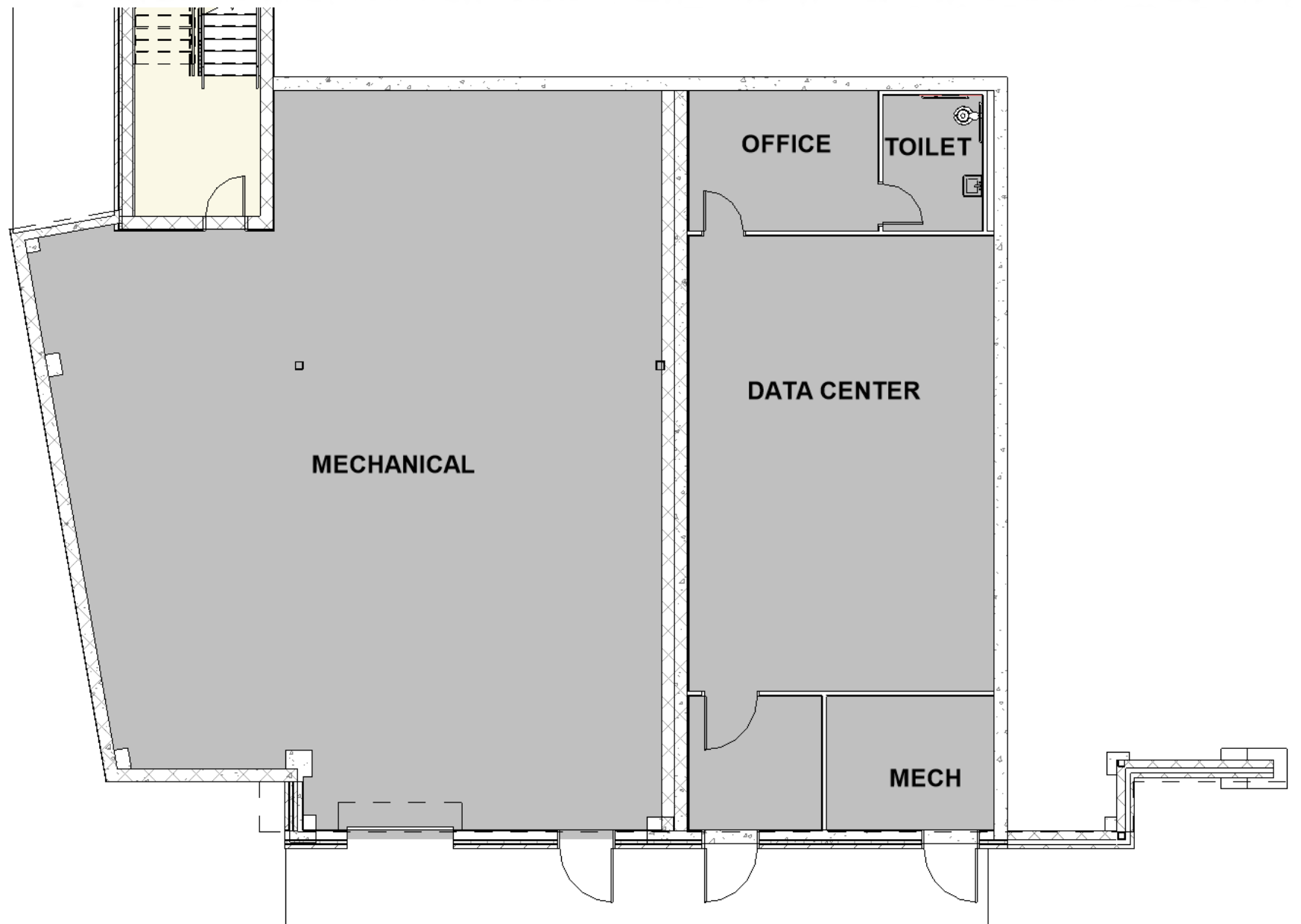
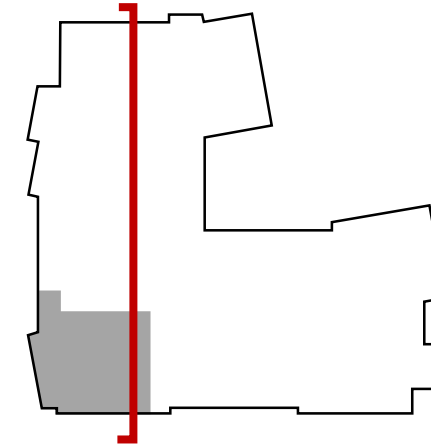
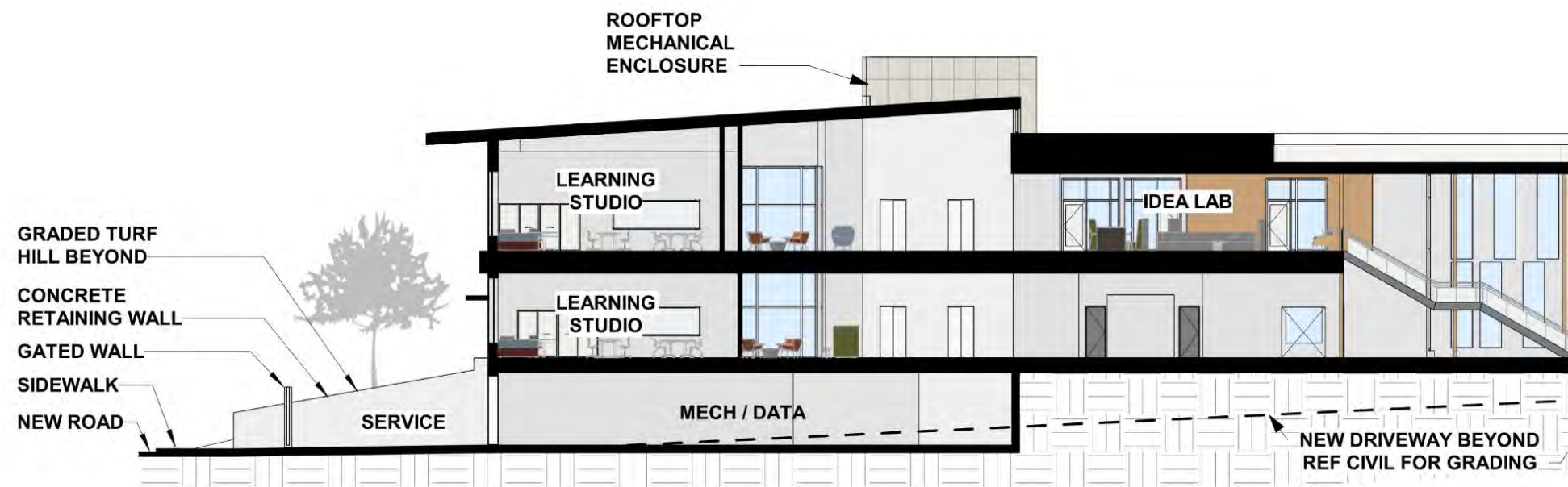
Level 1 Floor Plan





Level 2 – Academic Area





- Redundant HVAC systems
- Redundant back-up power
- Office space
- Planned for future needs
- Dedicated restroom
- Clean-agent fire suppression
- Independent structure designed to withstand building collapse
- Extensive waterproofing
- Raised Floor System

Basement Floor Plan & Building Section





Campus Entry – Central Hydraulic Road



Campus Entry – South, Georgetown Green



Main Entry – From AHS



Main Entry – From Parking Lot



Courtyard – From Pedestrian Path



Commons - From Main Entry



Commons - Facing Main Entry



Academic Wing – Learning Commons, First Floor



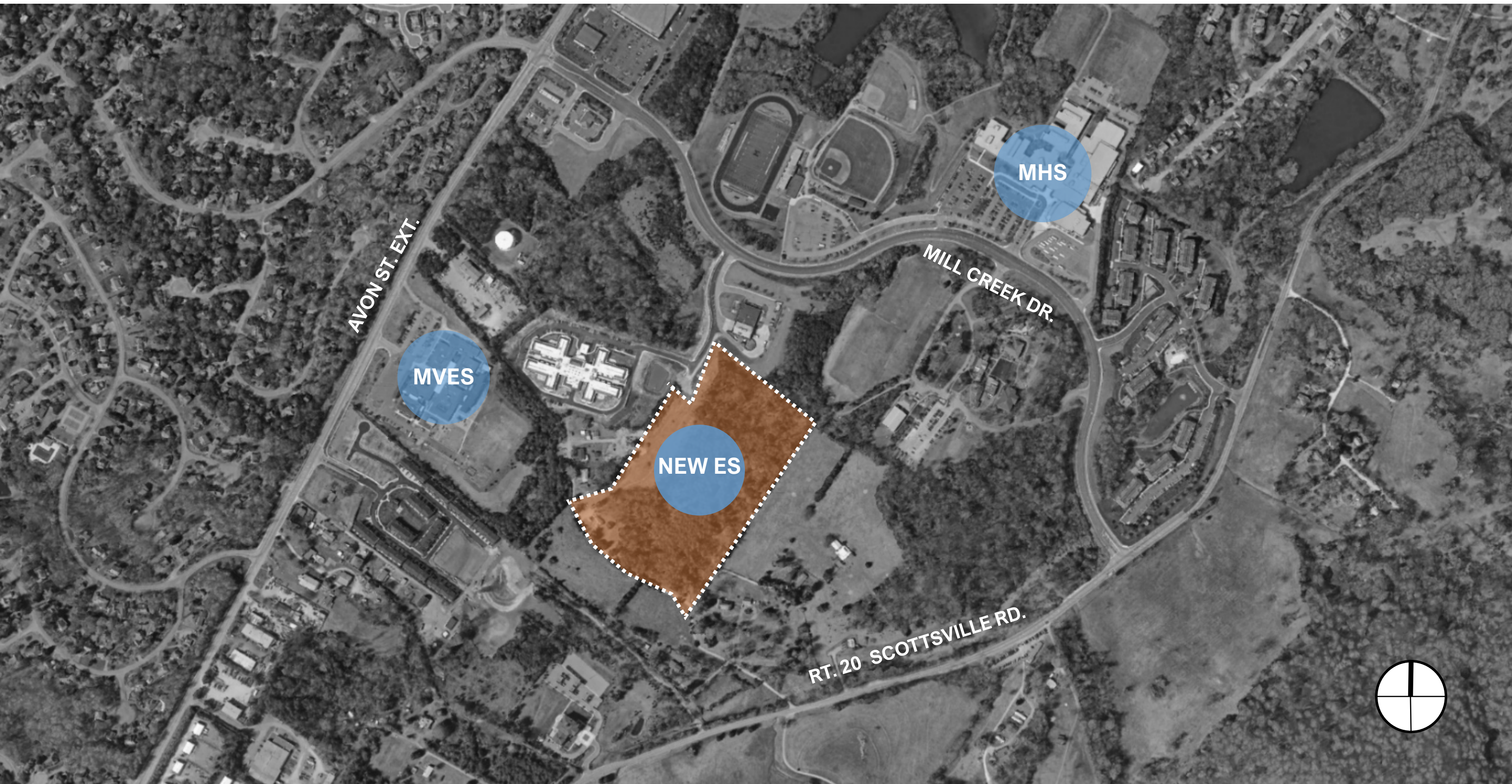
Academic Wing – Learning Commons, Second Floor



Southern Feeder Pattern Elementary School

Southern Feeder Pattern ES

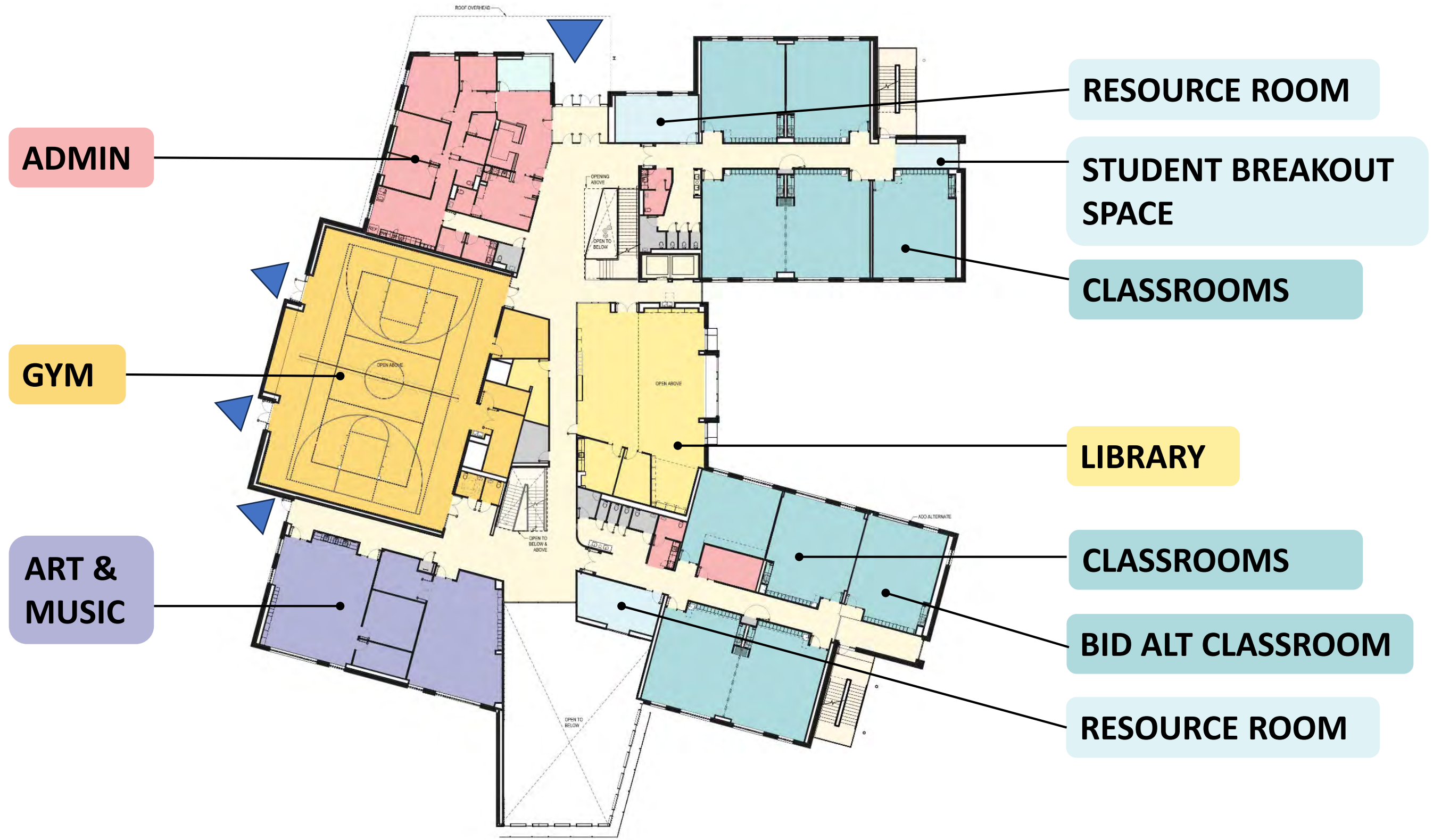
- 500-Student Elementary School
- ~72,500 SF Facility
- Grades 3-5 (Grades PK-2 will remain at existing Mountain View ES)



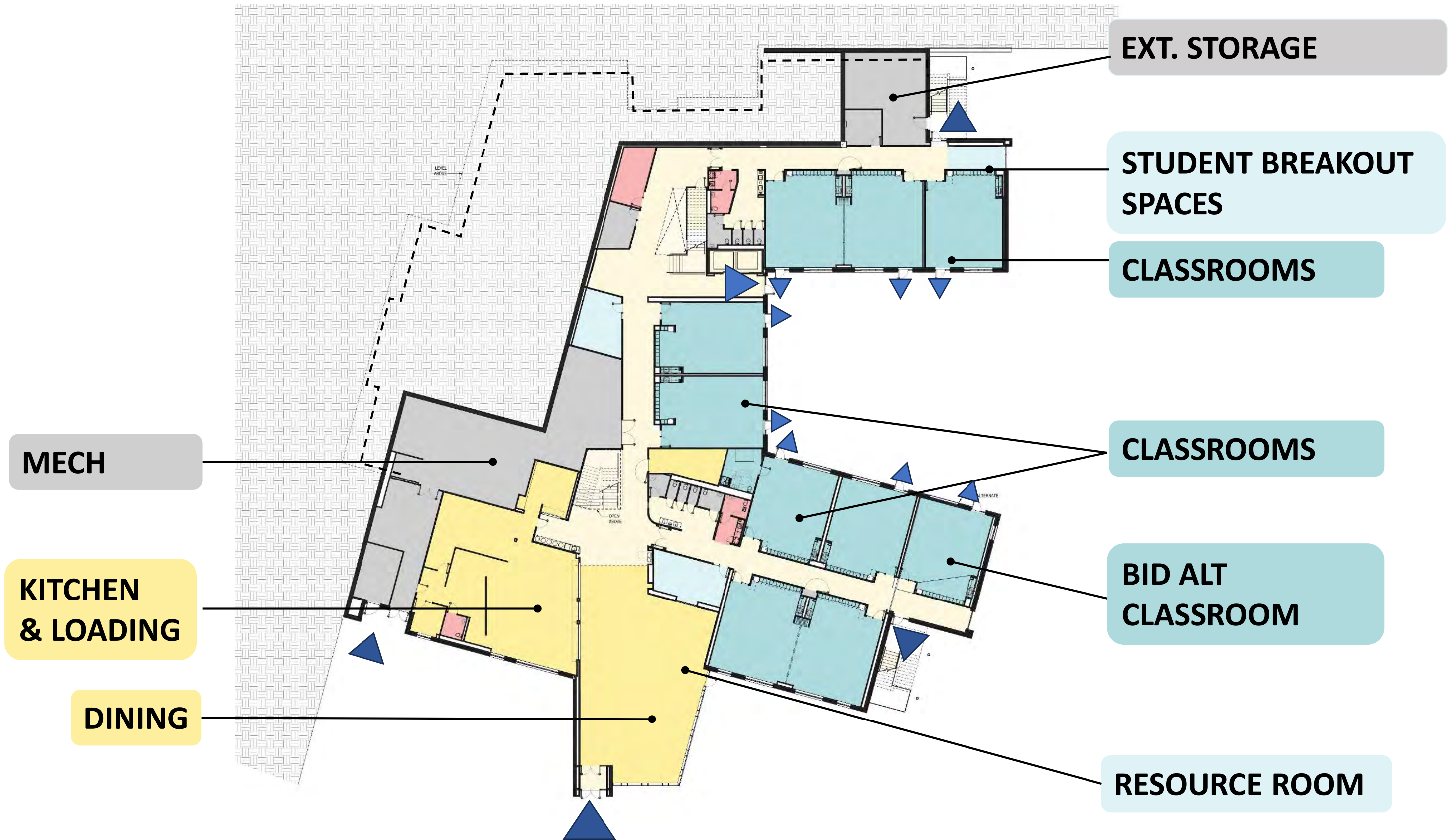
New Southern Feeder Elementary Aerial View



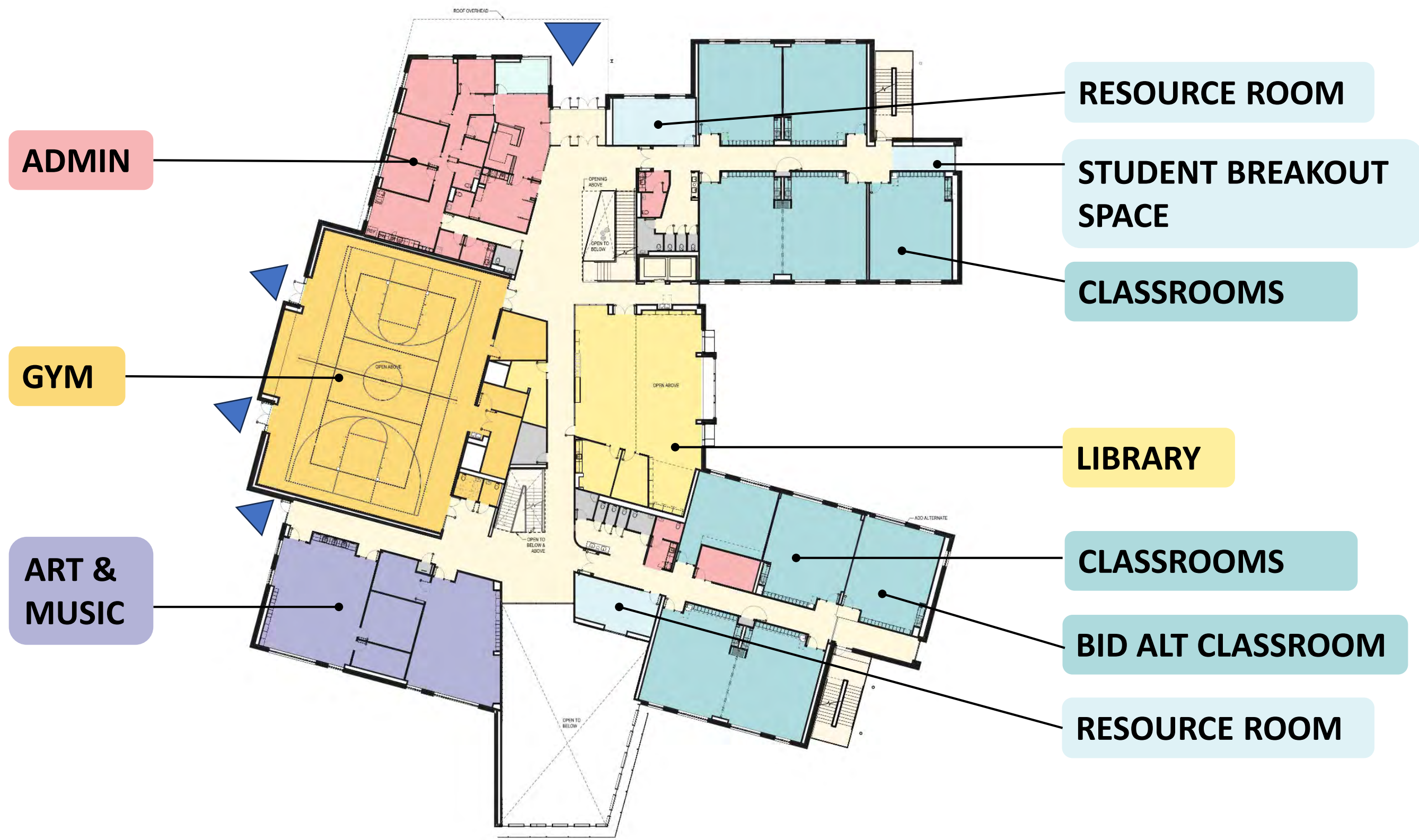
New Southern Feeder ES - Proposed Site Plan



Floor Plan – Level 1



Floor Plan – Level 0



ADMIN

GYM

ART & MUSIC

RESOURCE ROOM

STUDENT BREAKOUT SPACE

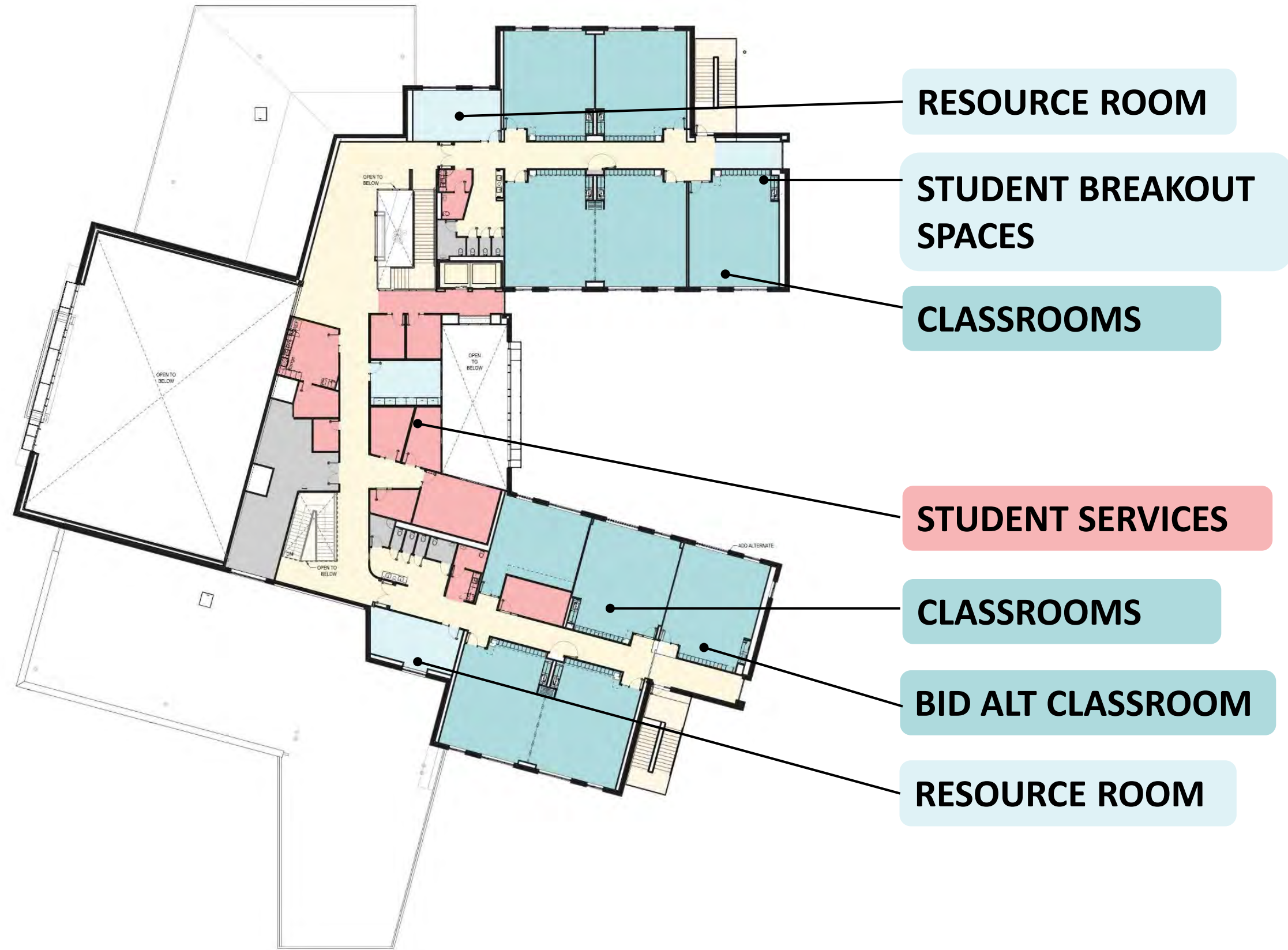
CLASSROOMS

LIBRARY

CLASSROOMS

BID ALT CLASSROOM

RESOURCE ROOM





CAR DROP-OFF ZONE





MAIN ENTRY LOBBY





Double Classroom





LIBRARY AND MAKERSPACE

VMDO



LIBRARY



VMDO



DINING COMMONS





PLAYGROUND AND DINING TERRACE



LEARNING COURTYARD



VMDO



PEDESTRIAN BRIDGE





GYM & SOCCER FIELD

Sustainable Features (Both Schools)

Transportation + Sustainable Sites

- Land Protection
- Accessible Paths to Promote Walkability
- Bicycle Racks
- EV Charging Stations (future)
- Stormwater Biofilters

Energy + Water Efficiency

- High-performance Building Envelope
- High-performance Mech. Systems
- Geothermal Wellfields
- All-LED Lighting
- Occupancy Sensors
- Low-flow Plumbing Fixtures (30% Water Reduction)
- Solar-Ready Roofs

Materials + Indoor Environmental Quality (comfort & health)

- Sourcing Healthy Materials
- Recycling + Composting Program
- Demand-control Ventilation (fresh air)
- Low-emitting Materials (off-gassing)
- Operable Windows
- Individual Room Lighting Controls
- Abundant Daylight & Views to Nature

Tracking LEEDv4 Silver

Project Schedules (Both Schools)

- **Notice To Proceed:** August 2023
- **Schematic Design:** September 2023 – January 2024
- **Design Development:** January – April 2024
 - **School Board Presentation: May 09, 2024**
 - **School Board Action Item: May 23, 2024**
- **Construction Documents:** April – September 2024
- **Bidding & Negotiations:** September – December 2024
- **Construction:** December 2024 – July 2026
- **Opening:** August 2026

A vertical decorative bar on the left side of the slide, consisting of 12 horizontal rectangular segments of varying shades of blue, ranging from light cyan to dark navy.

Questions?