

SIGN TYPE	Monument Signs	Façade Signs (Street Side)	Façade Signs (Parking Lot Side)	Window Signs
SIGN LOCATION	As noted on plan. Minimum 5' setback from property line. Maximum of 1 per street frontage.	As noted on front elevation. Horizontally centered with corresponding windows. Vertically centered between top of window and bottom of roof.	As noted on back elevation. Horizontally centered with corresponding canopy. Vertically centered along edge of overhang.	As noted on front and back elevations. Horizontally and vertically centered with window or door panel.
SIZE LIMITATIONS	Maximum sign area of 32 square feet. Tenant panel maximum size limitation of 5'-3" x 10". Tenant letter height max 8". Signs must be in proportion with other signs and the overall building.	Panel height max 2'-0". Panel cannot extend horizontally past 15'-0". Signs must be in proportion with other signs and the overall building.	Panel height max 2'-0". Panel cannot extend horizontally past 14'-0". Signs must be in proportion with other signs and the overall building.	All signs on each window cannot exceed 25 percent of the total area of the window or door, per Sec. 14.15.11. Signs must be in proportion with other signs and the overall building.
LETTER COLOR	White	Black	Black	White
TRIM CAP/RETURN COLOR	N/A	Trim cap color to match return color. Return color is black.	Trim cap color to match return color. Return color is black.	N/A
BACKGROUND/PANEL/BODY COLOR	Black aluminum, wood, concrete	Black panel with letter cut outs	Black panel with letter cut outs	N/A
MOUNTING DETAILS	Signage to be direct set onto metal tenant panel.	Panel mounted to exterior wall using 1" mounting standoffs.	Panel mounted to exterior wall using 1" mounting standoffs.	N/A
GRAPHICS	Colors and illumination are subject to review.	Colors and illumination are subject to review.	Colors and illumination are subject to review.	Colors are subject to review
ILLUMINATION DETAILS	Backlit / Halo illumination	Backlit / Halo illumination	Backlit / Halo illumination	N/A
LETTER TYPE/FONT	Logo or lettering in white aluminum or white acrylic. Font and logo subject to Owner review.	Logo or lettering in black. Font and logo subject to Owner review.	Logo or lettering in black. Font and logo subject to Owner review.	Logo or lettering in White. Font and logo subject to Owner review.
MATERIALS	Wood, aluminum, concrete	Aluminum	Aluminum	Vinyl



COMPREHENSIVE SIGN PLAN
 FOR IVY PROPER
 ALBEMARLE COUNTY, VIRGINIA

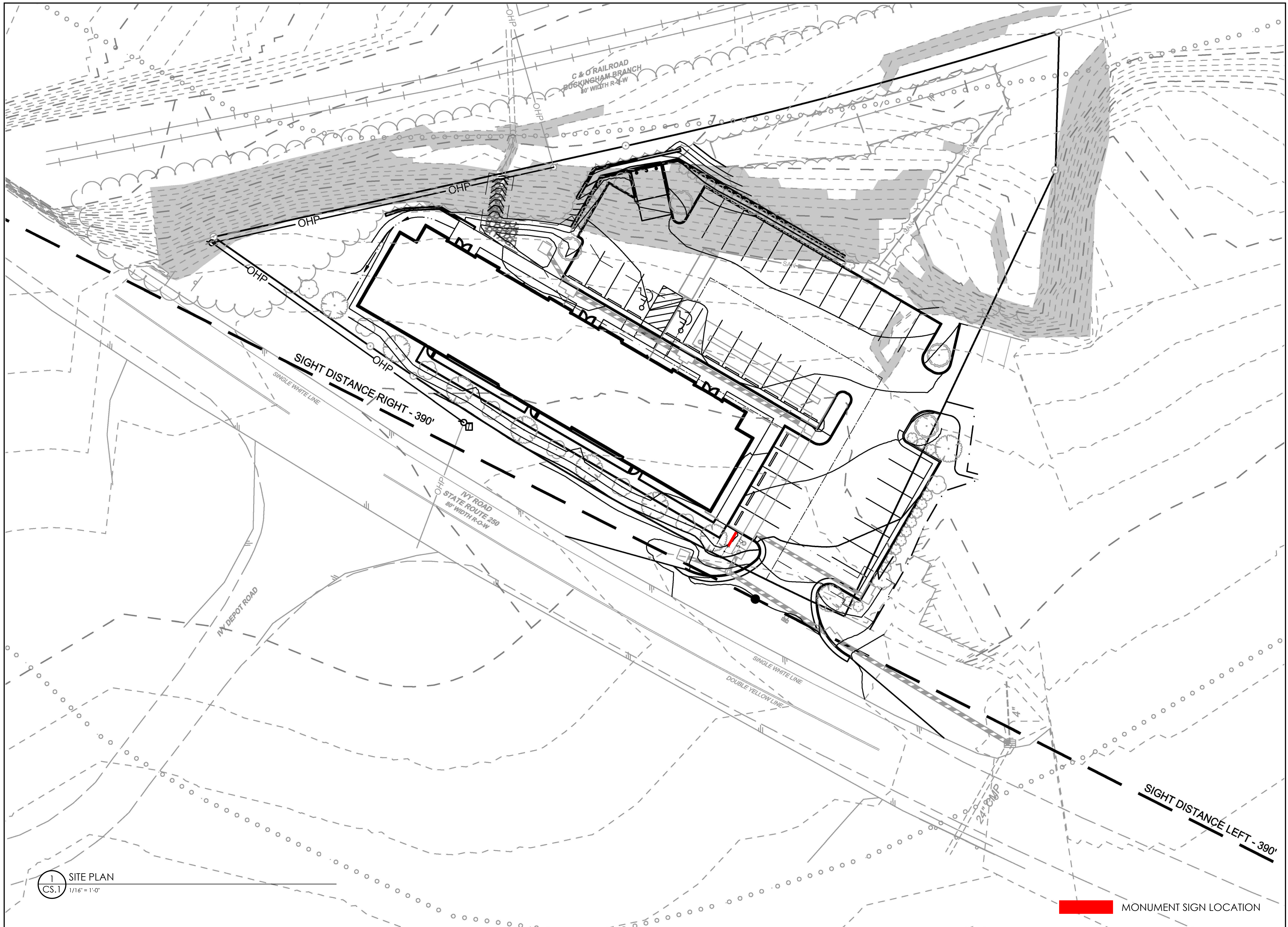
STREET SIGNAGE

ISSUE DATE:
 JULY 24, 2023

CSP.2

SHEET # 2 OF 9

1 STREET SIGNAGE
 CS.2



COMPREHENSIVE SIGN PLAN
 FOR IVY PROPER
 ALBEMARLE COUNTY, VIRGINIA

SITE PLAN -
 MONUMENT SIGN
 LOCATION

ISSUE DATE:
 JULY 24, 2023

CSP.3

1 SITE PLAN
 CS.1 1/16" = 1'-0"

MONUMENT SIGN LOCATION

COMPREHENSIVE SIGN PLAN
 FOR IVY PROPER
 ALBEMARLE COUNTY, VIRGINIA

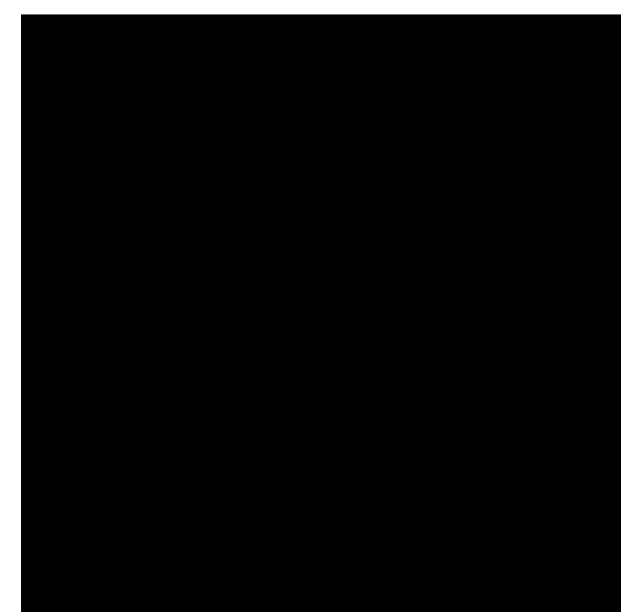
MONUMENT SIGN

ISSUE DATE:
 JULY 24, 2023

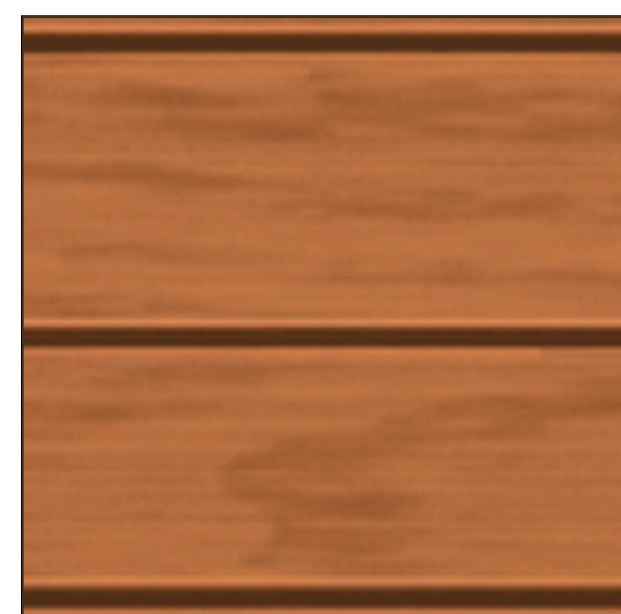
CSP.4

SHEET # 4 OF 9

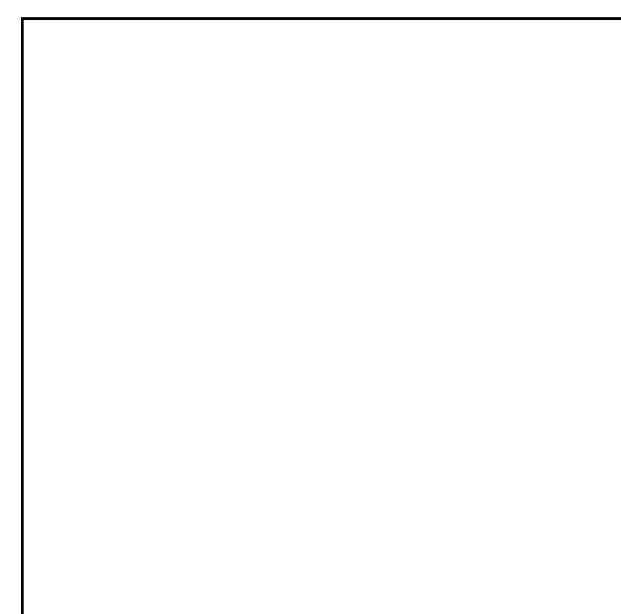
SIGNAGE MATERIALS



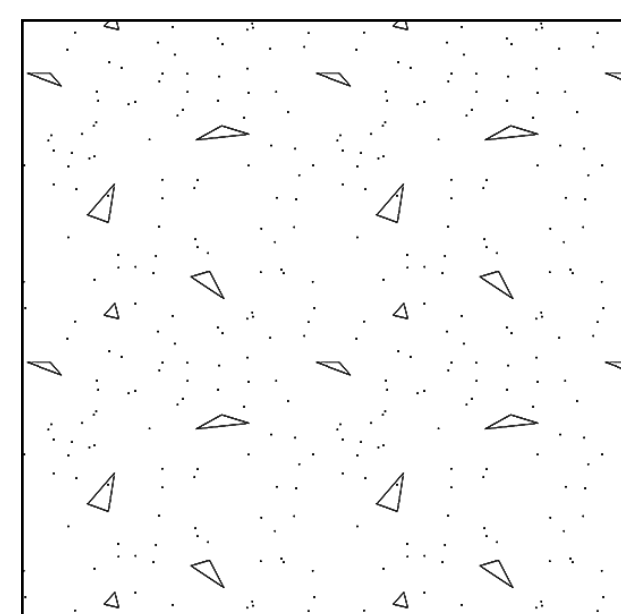
Black Aluminum



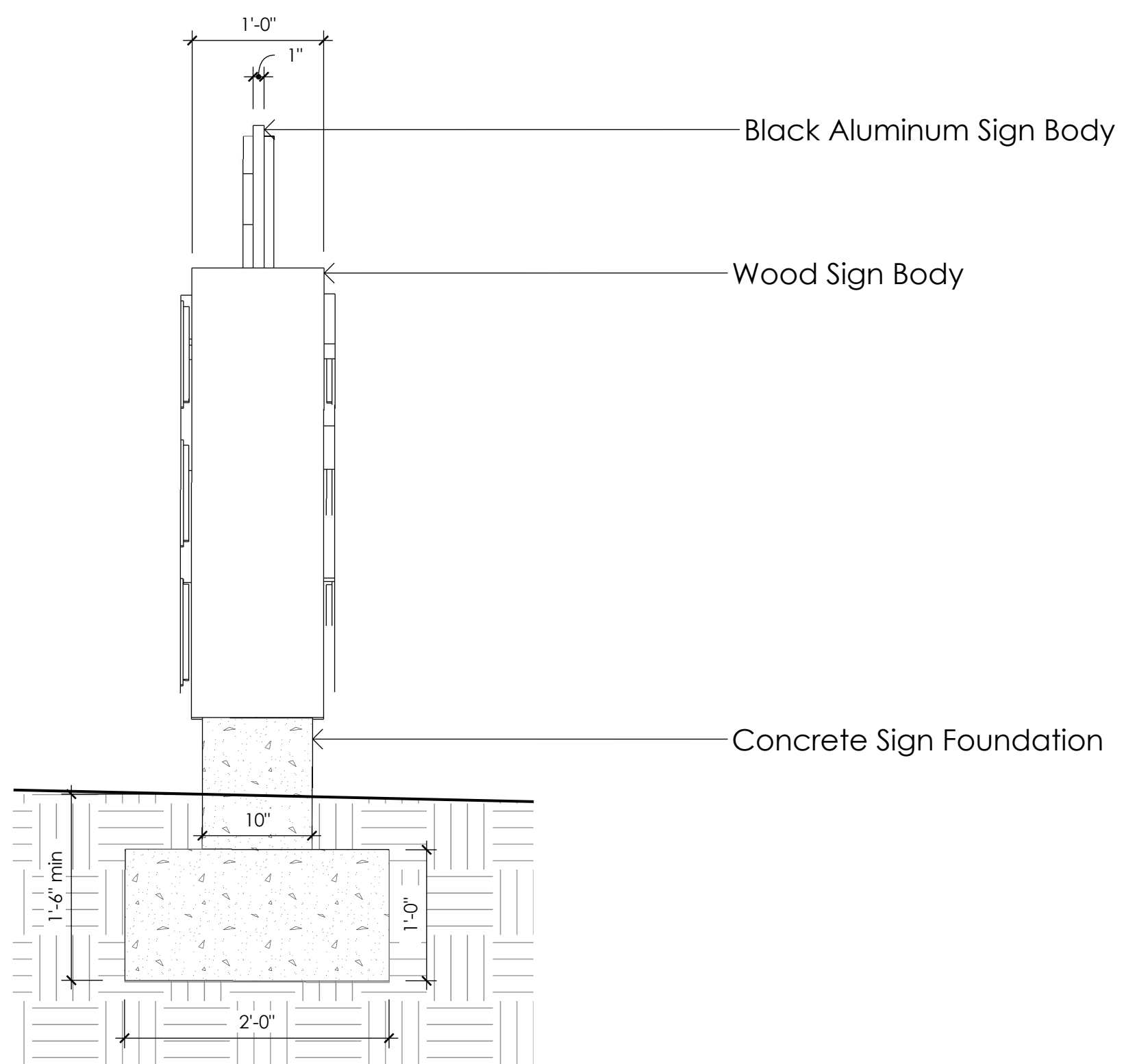
Wood



White Aluminum

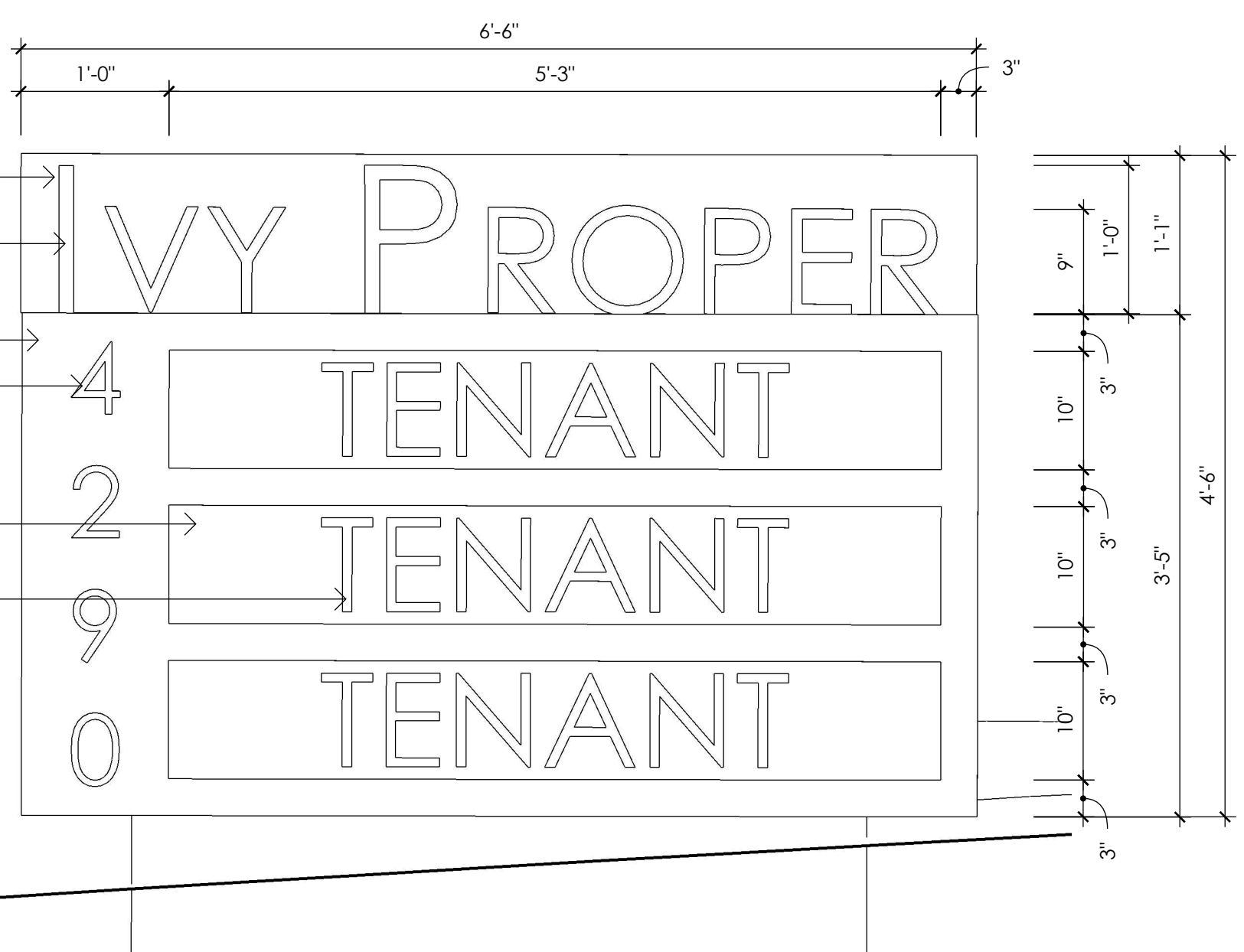


CONCRETE

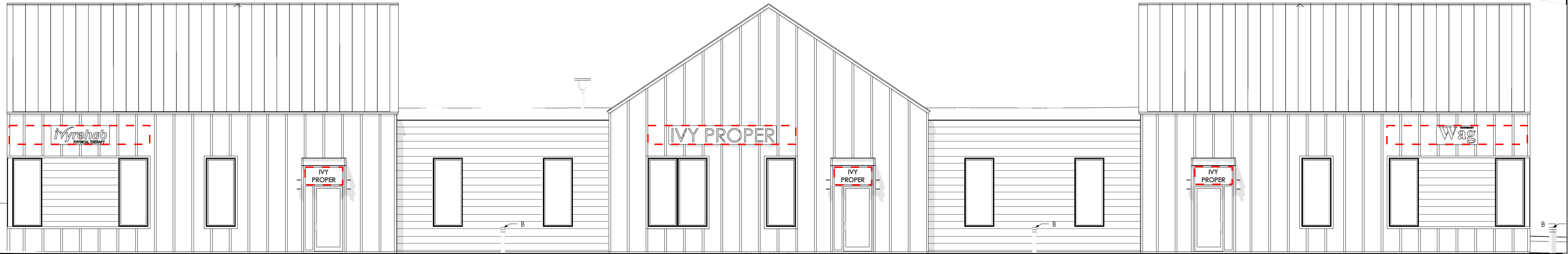


1 MONUMENT SIGN SIDE ELEVATION
 CS.4 1" = 1'-0"

- Black Aluminum Sign Body
- White Aluminum Dimensional Channel Letters on Face
- Wood Sign Body
- White Aluminum Dimensional Channel Letters on Face
- Black Aluminum Sign Body
- White Acrylic Background behind Black Aluminum Panel

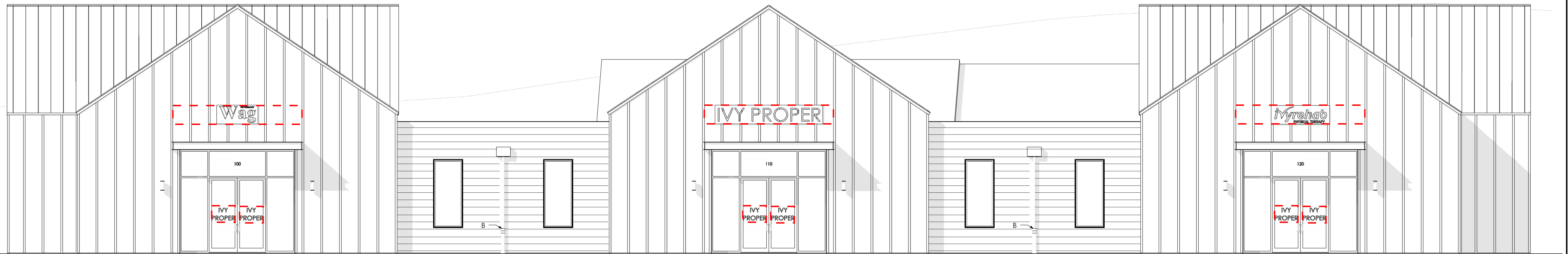


2 MONUMENT SIGN FRONT ELEVATION
 CS.4 1" = 1'-0"



1 FRONT ELEVATION
 CS.5 3/16" = 1'-0"

--- PANEL SIGN LOCATIONS
 - - - VINYL SIGN LOCATIONS



2 BACK ELEVATION
 CS.5 3/16" = 1'-0"

--- PANEL SIGN LOCATIONS
 - - - VINYL SIGN LOCATIONS

COMPREHENSIVE SIGN PLAN
 FOR IVY PROPER
 ALBEMARLE COUNTY, VIRGINIA

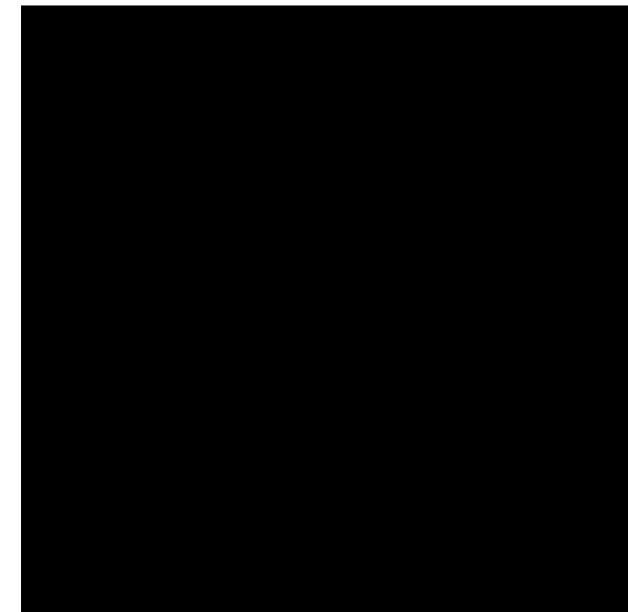
ELEVATIONS

ISSUE DATE:
 JULY 24, 2023

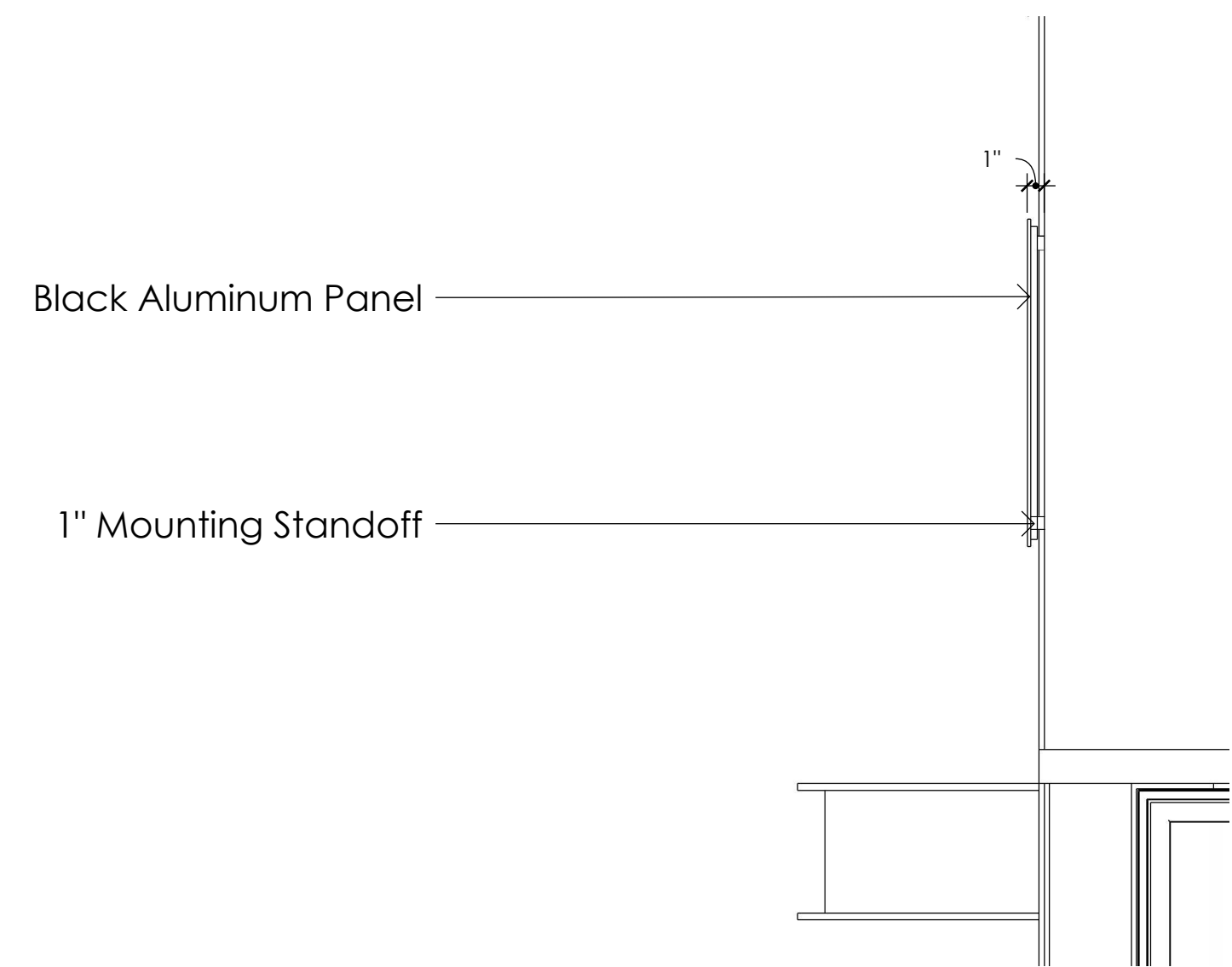
CSP.5

SHEET # 5 OF 9

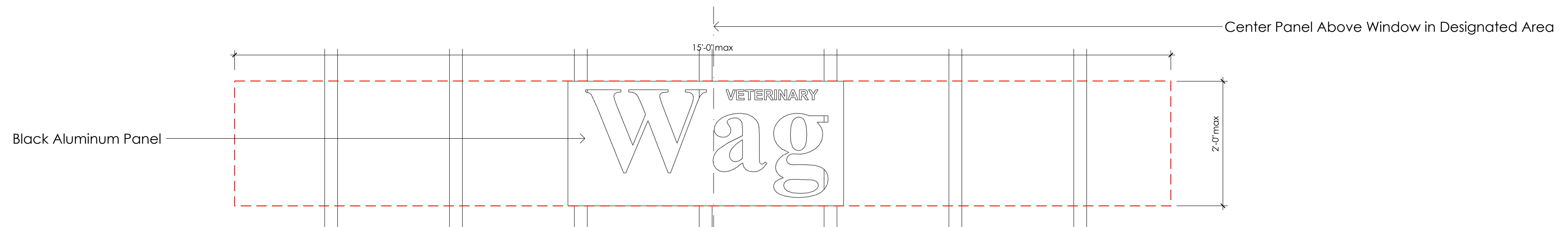
SIGNAGE MATERIALS



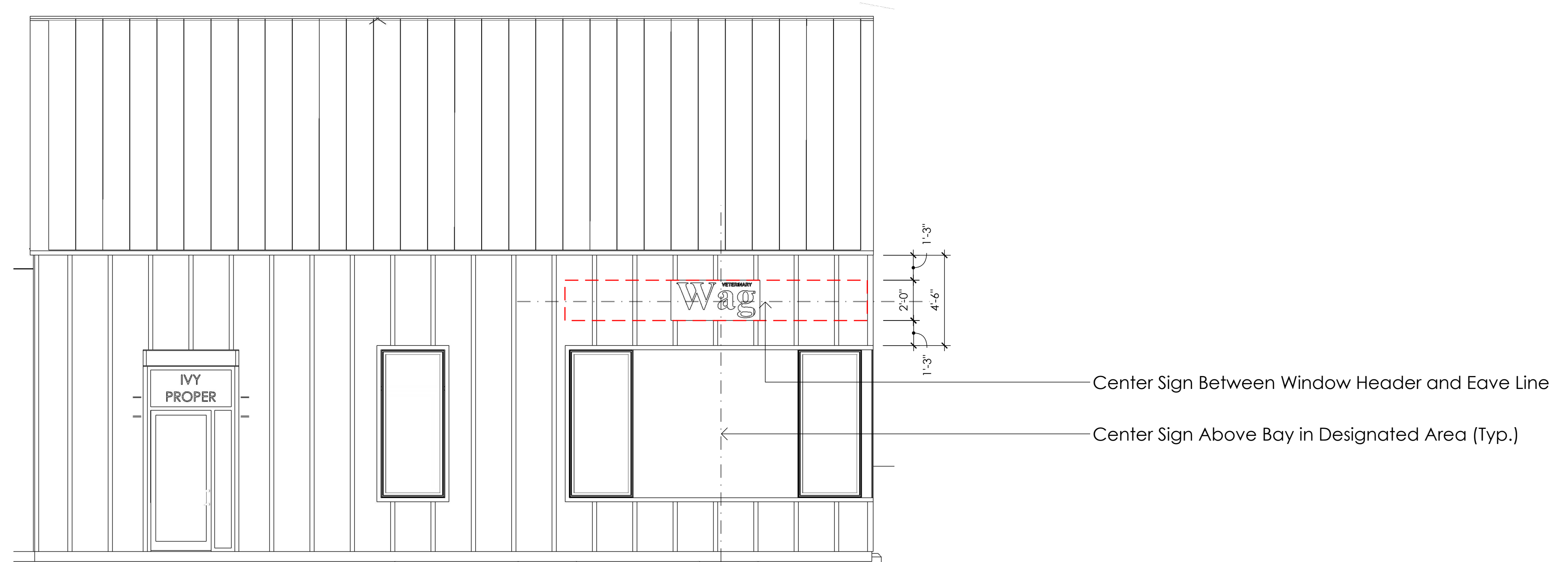
Black Aluminum



1 PANEL WALL SIGN SIDE ELEVATION
CS.6 1" = 1'-0"

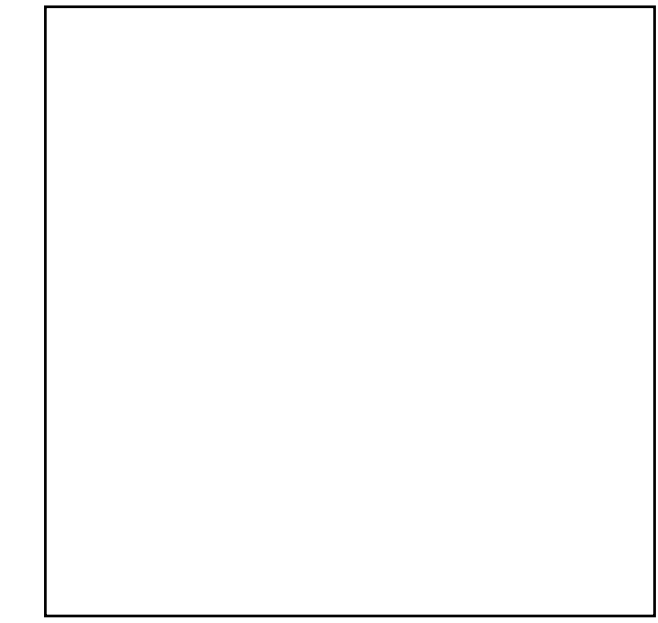


2 PANEL WALL SIGN FRONT ELEVATION
CS.6 1" = 1'-0"

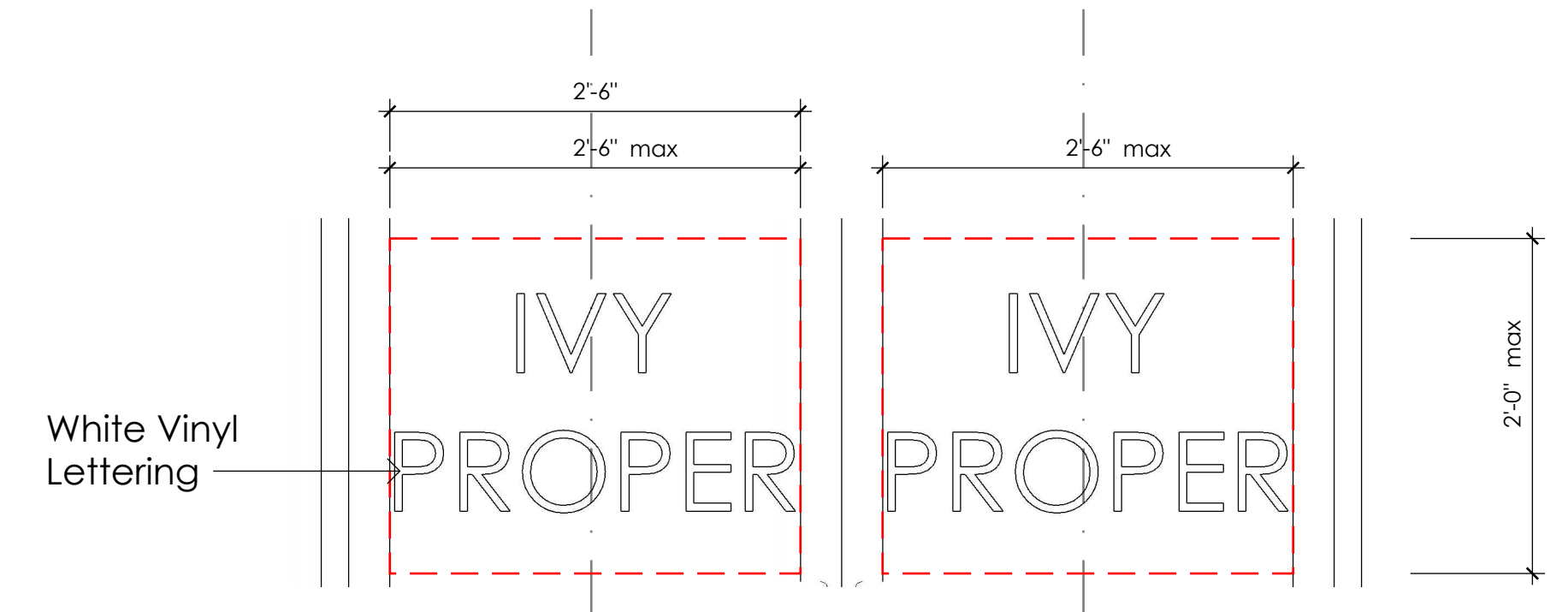


3 PANEL WALL SIGN FRONT ELEVATION
CS.6 1/4" = 1'-0"

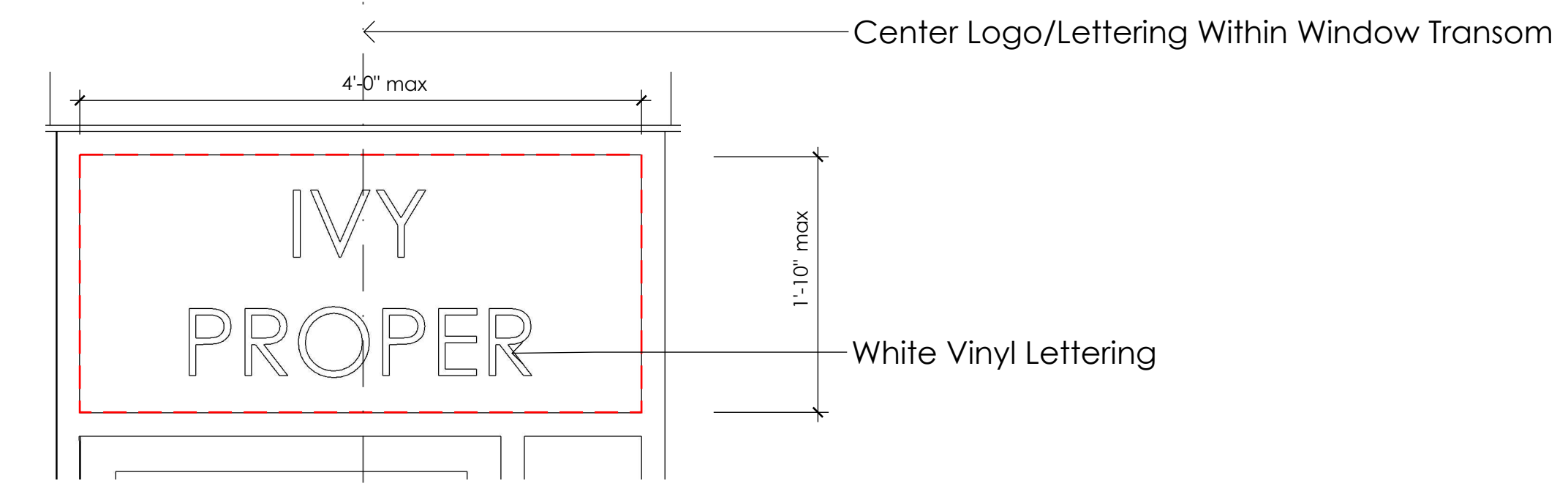
SIGNAGE MATERIALS



White Vinyl



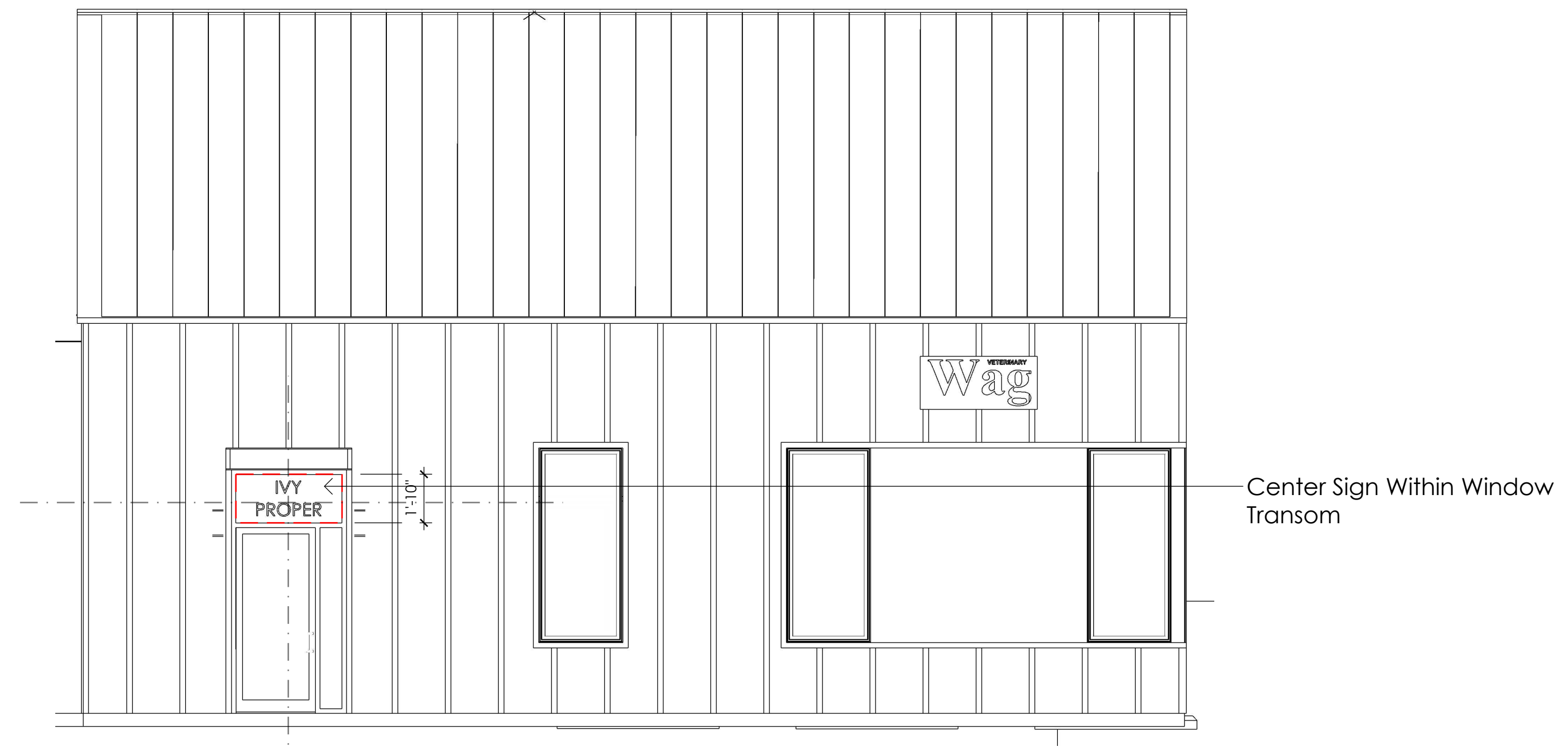
1 WINDOW SIGN FRONT ELEVATION
 CS.7 1" = 1'-0"



2 WINDOW SIGN FRONT ELEVATION
 CS.7 1" = 1'-0"



3 WINDOW SIGN BACK ELEVATION
 CS.7 1/4" = 1'-0"



4 WINDOW SIGN FRONT ELEVATION
 CS.7 1/4" = 1'-0"



COMPREHENSIVE SIGN PLAN
 FOR IVY PROPER
 ALBEMARLE COUNTY, VIRGINIA

STOREFRONT SIGNAGE

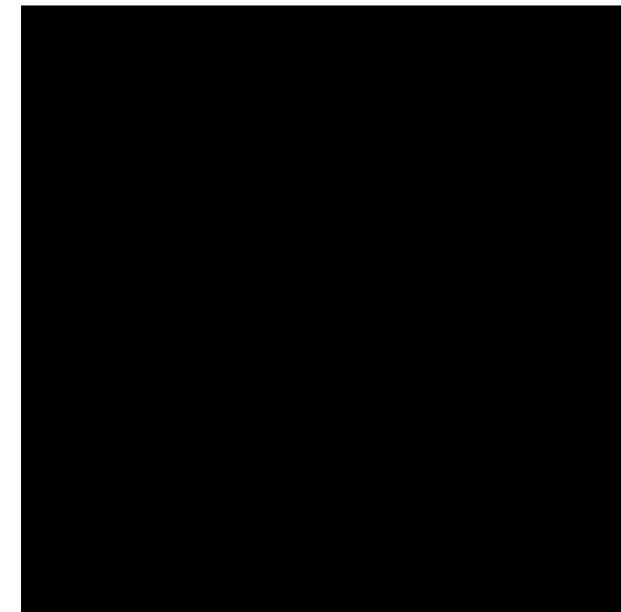
ISSUE DATE:
 JULY 24, 2023

CSP.8

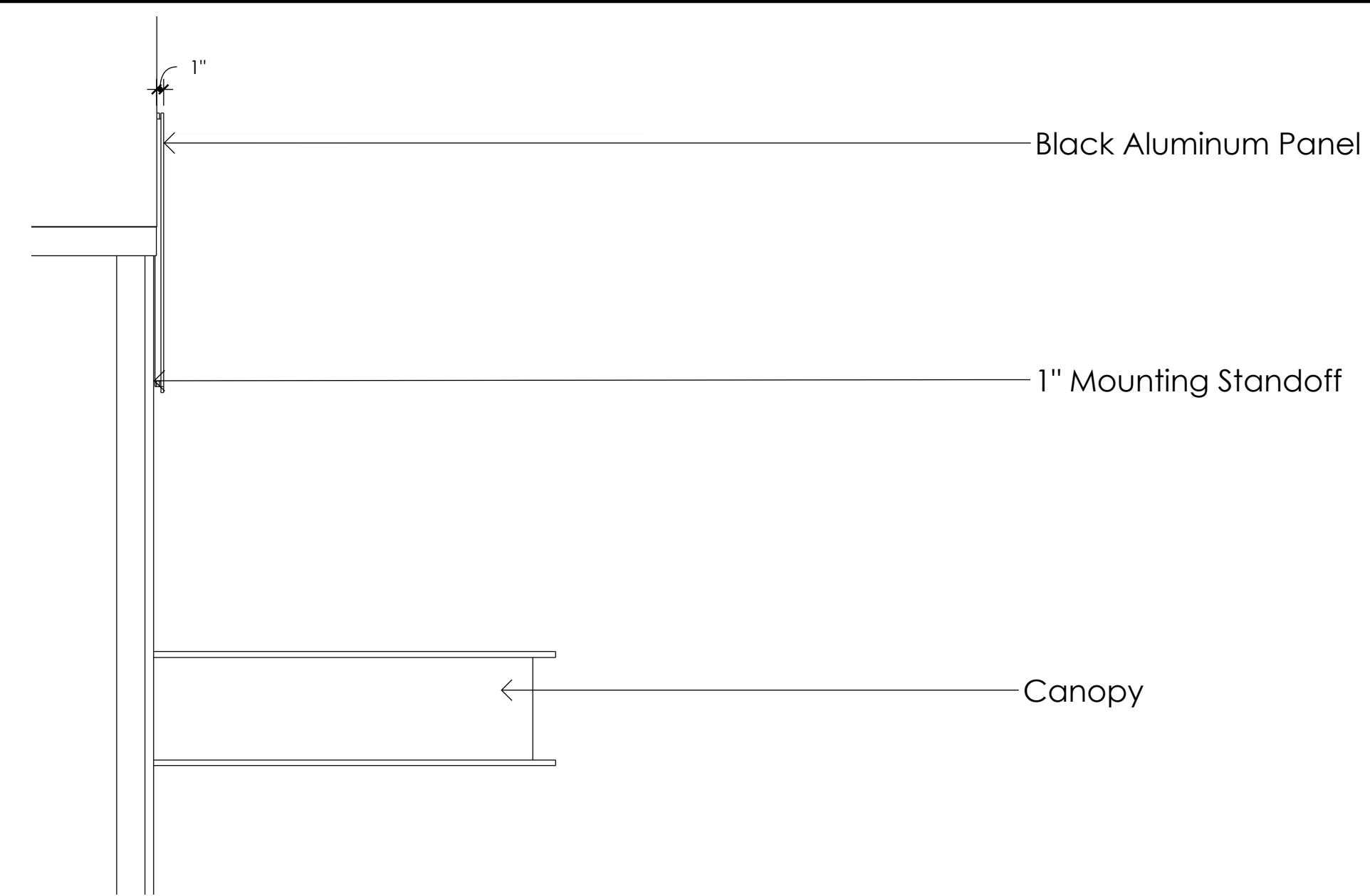
SHEET # 8 OF 9

1 STOREFRONT SIGNAGE
 CS.8

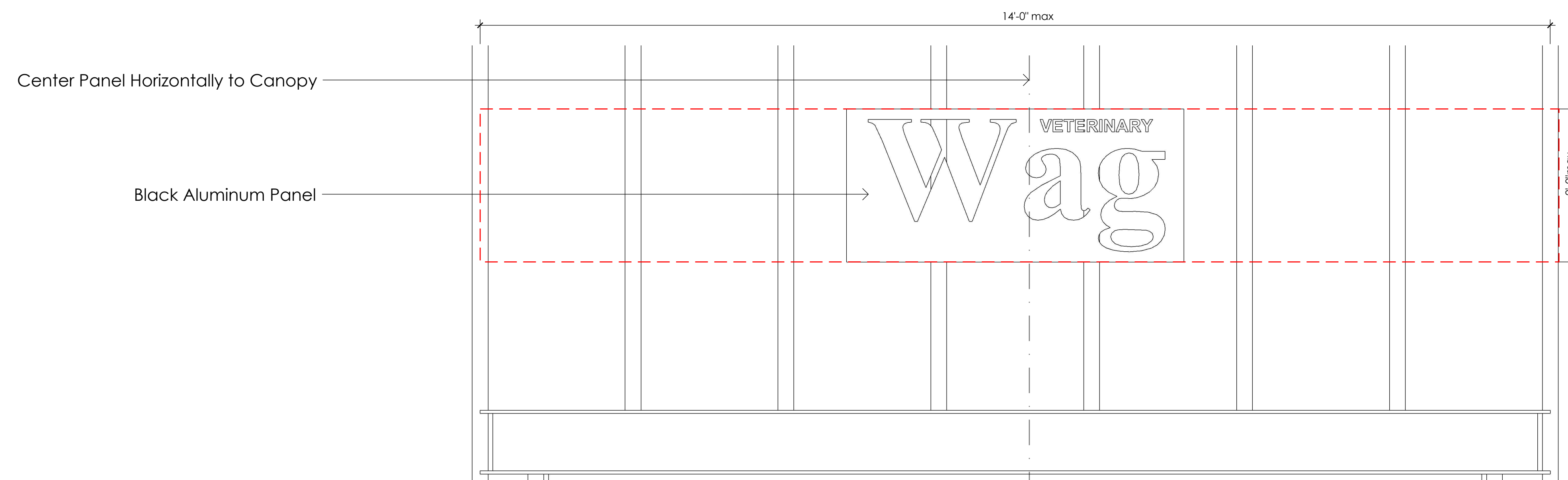
SIGNAGE MATERIALS



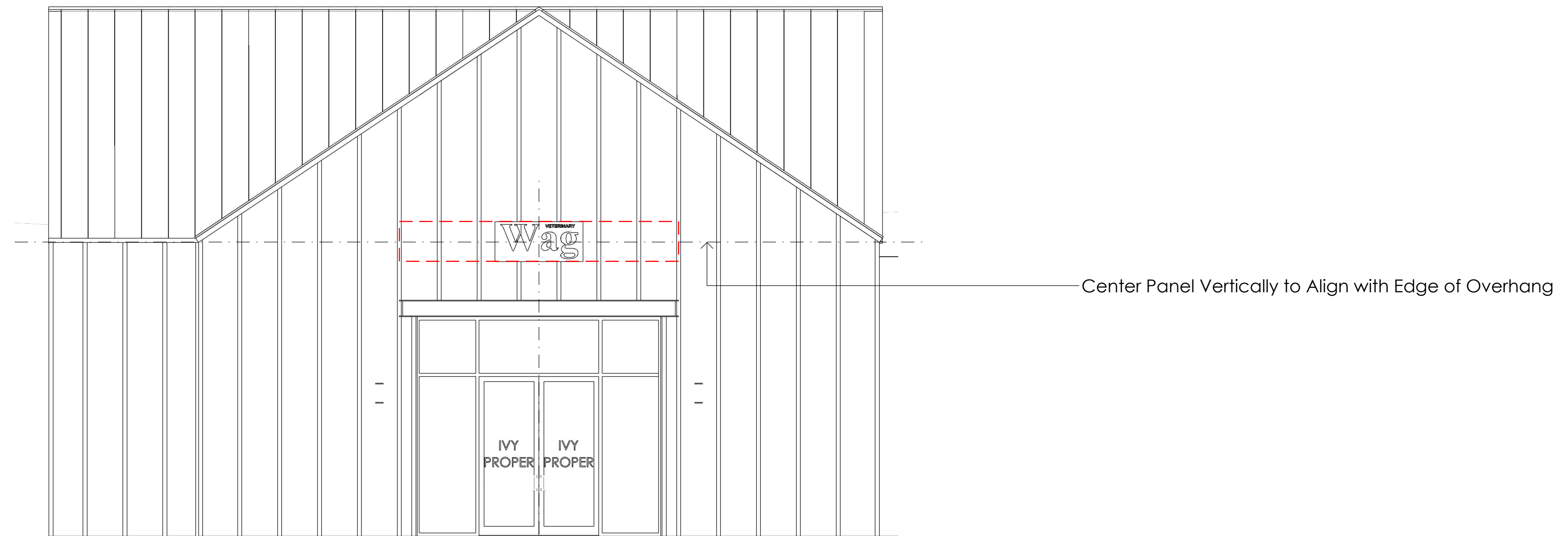
Black Aluminum



1 FACADE SIGN SIDE ELEVATION
CS.9 1" = 1'-0"



2 FACADE SIGN FRONT ELEVATION
CS.9 1" = 1'-0"



3 FACADE SIGN BACK ELEVATION
CS.9 1/4" = 1'-0"