

PIEDMONT GROUNDS MANAGEMENT EXISTING CONDITIONS

TMP 94-28C
ZHIQING LI
INST: 202300000430
2 ACRES
ZONING: RA

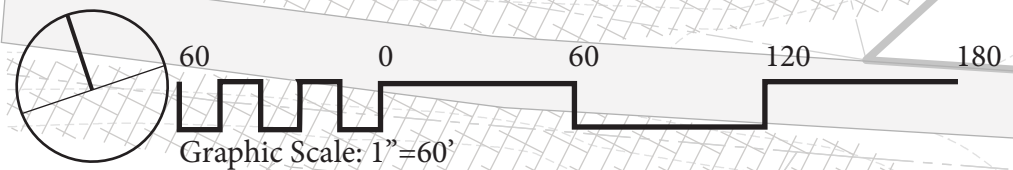
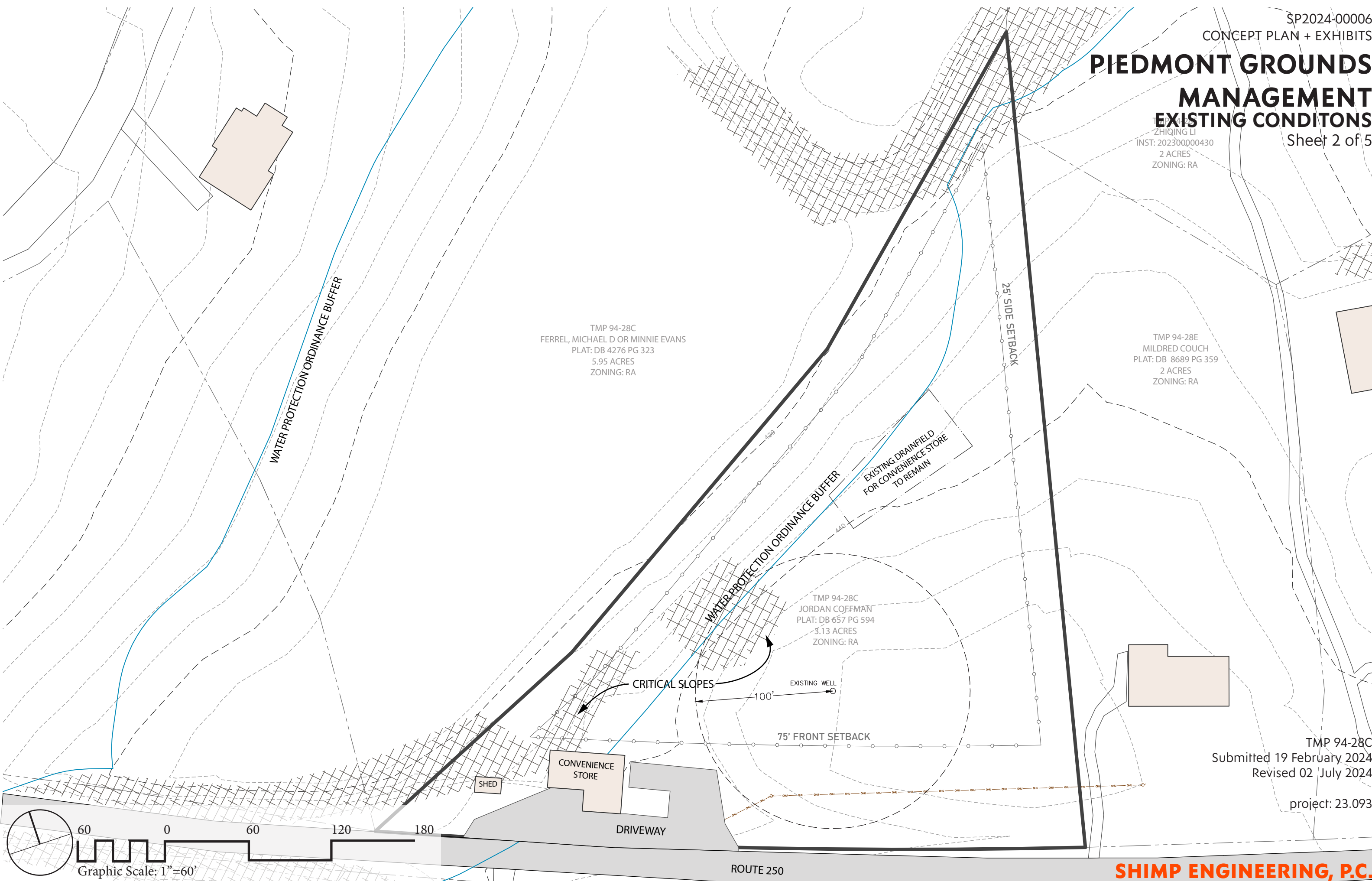
TMP 94-28C
FERREL, MICHAEL D OR MINNIE EVANS
PLAT: DB 4276 PG 323
5.95 ACRES
ZONING: RA

TMP 94-28E
MILDRED COUCH
PLAT: DB 8689 PG 359
2 ACRES
ZONING: RA

TMP 94-28C
JORDAN COFFMAN
PLAT: DB 657 PG 594
3.13 ACRES
ZONING: RA

TMP 94-28C
Submitted 19 February 2024
Revised 02 July 2024

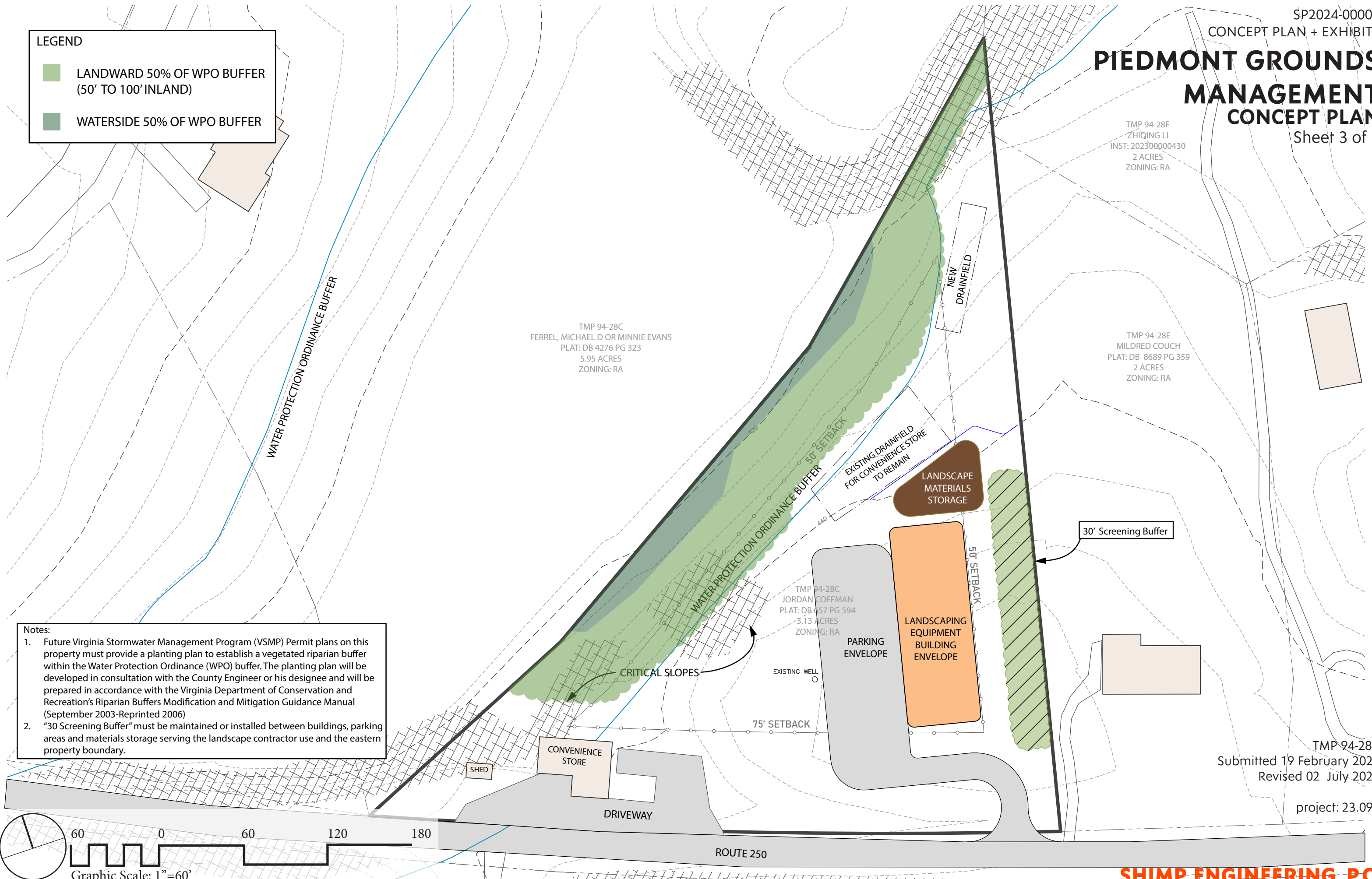
project: 23.093



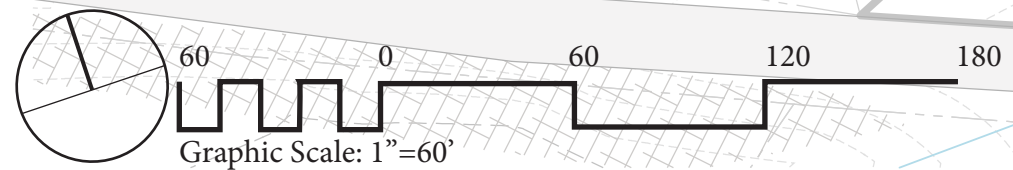
PIEDMONT GROUNDS MANAGEMENT CONCEPT PLAN

LEGEND

- LANDWARD 50% OF WPO BUFFER (50' TO 100' INLAND)
- WATERSIDE 50% OF WPO BUFFER



- Notes:**
1. Future Virginia Stormwater Management Program (VSMP) Permit plans on this property must provide a planting plan to establish a vegetated riparian buffer within the Water Protection Ordinance (WPO) buffer. The planting plan will be developed in consultation with the County Engineer or his designee and will be prepared in accordance with the Virginia Department of Conservation and Recreation's Riparian Buffers Modification and Mitigation Guidance Manual (September 2003-Reprinted 2006)
 2. "30 Screening Buffer" must be maintained or installed between buildings, parking areas and materials storage serving the landscape contractor use and the eastern property boundary.



TMP 94-28C
Submitted 19 February 2024
Revised 02 July 2024

project: 23.093

PIEDMONT GROUNDS MANAGEMENT ILLUSTRATIVE LANDSCAPE PLAN

LEGEND

- LANDWARD 50% OF WPO BUFFER (50' TO 100' INLAND)
- WATERSIDE 50% OF WPO BUFFER

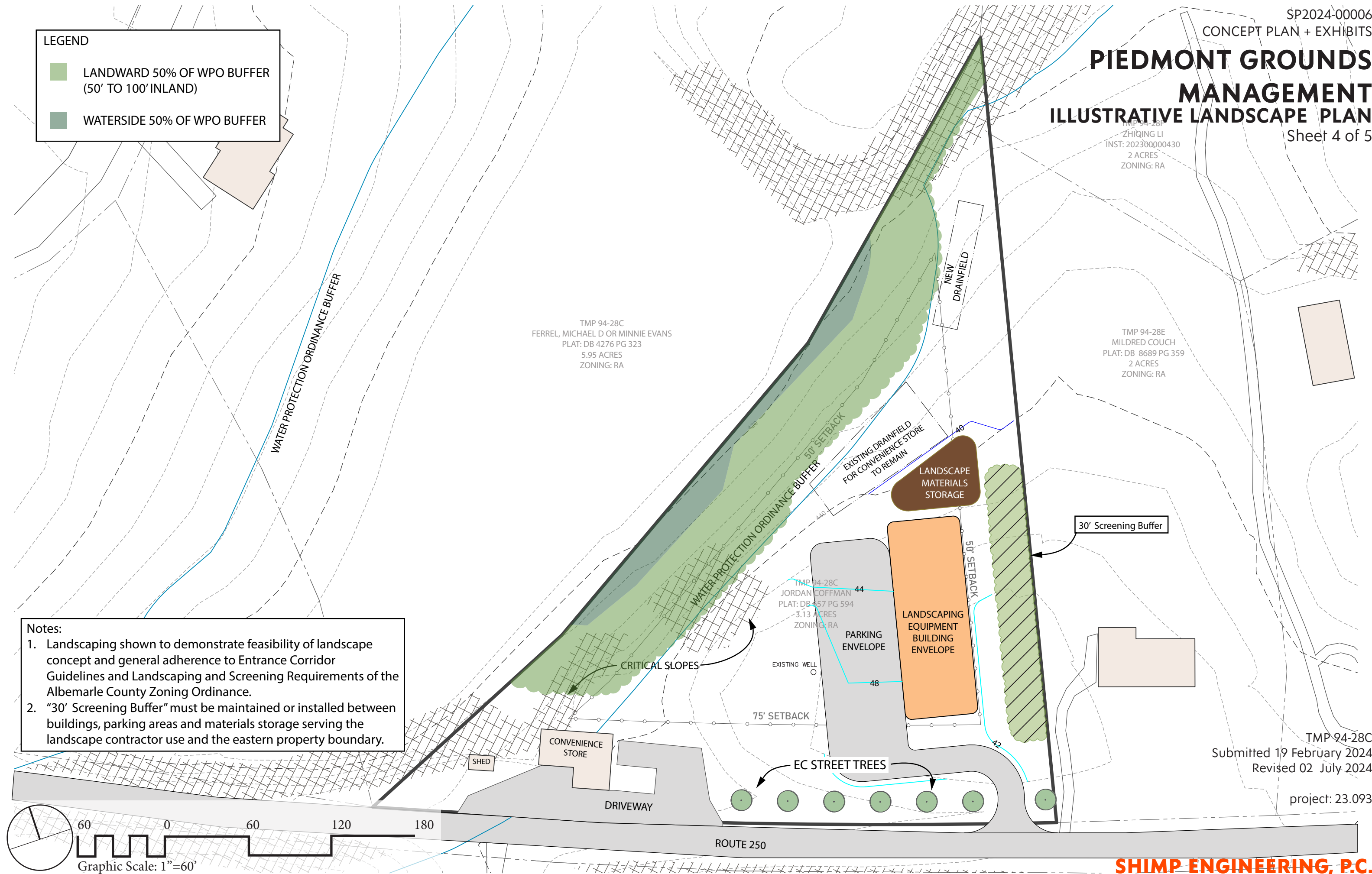
TMP 94-281
ZHIQING LI
INST: 202300000430
2 ACRES
ZONING: RA

TMP 94-28C
FERREL, MICHAEL D OR MINNIE EVANS
PLAT: DB 4276 PG 323
5.95 ACRES
ZONING: RA

TMP 94-28E
MILDRED COUCH
PLAT: DB 8689 PG 359
2 ACRES
ZONING: RA

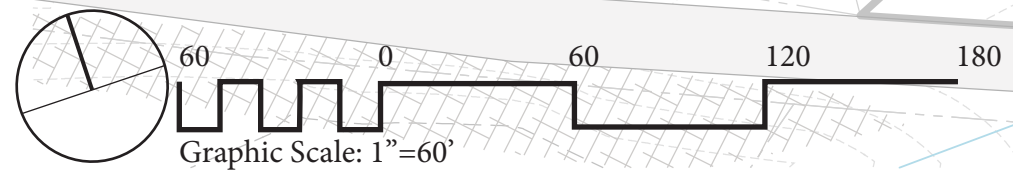
Notes:

1. Landscaping shown to demonstrate feasibility of landscape concept and general adherence to Entrance Corridor Guidelines and Landscaping and Screening Requirements of the Albemarle County Zoning Ordinance.
2. "30' Screening Buffer" must be maintained or installed between buildings, parking areas and materials storage serving the landscape contractor use and the eastern property boundary.



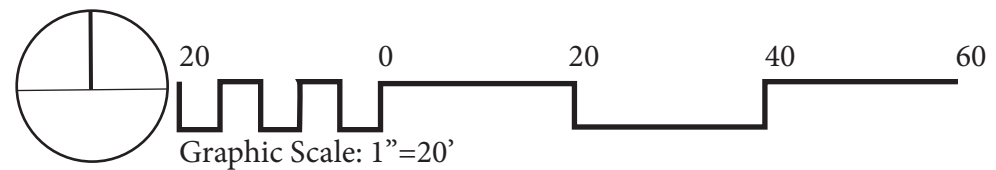
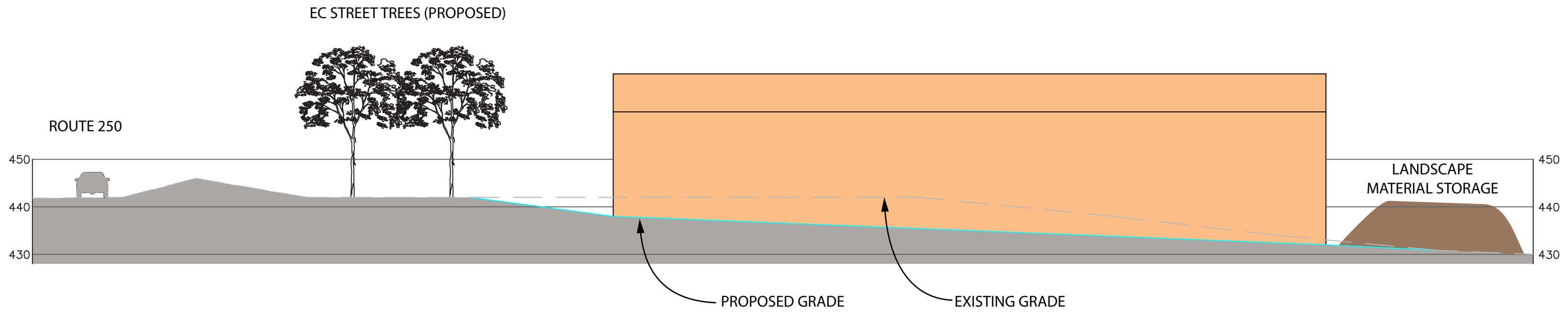
TMP 94-28C
Submitted 19 February 2024
Revised 02 July 2024

project: 23.093



PIEDMONT GROUNDS MANAGEMENT SITE SECTION

Sheet 5 of 5



TMP 94-28C
Submitted 19 February 2024
Revised 02 July 2024

project: 23.093