

UVA Community Credit Union Tower Relocation

SP 2024-019

Albemarle County

5th and Avon Community Advisory Committee Meeting

September 19, 2024

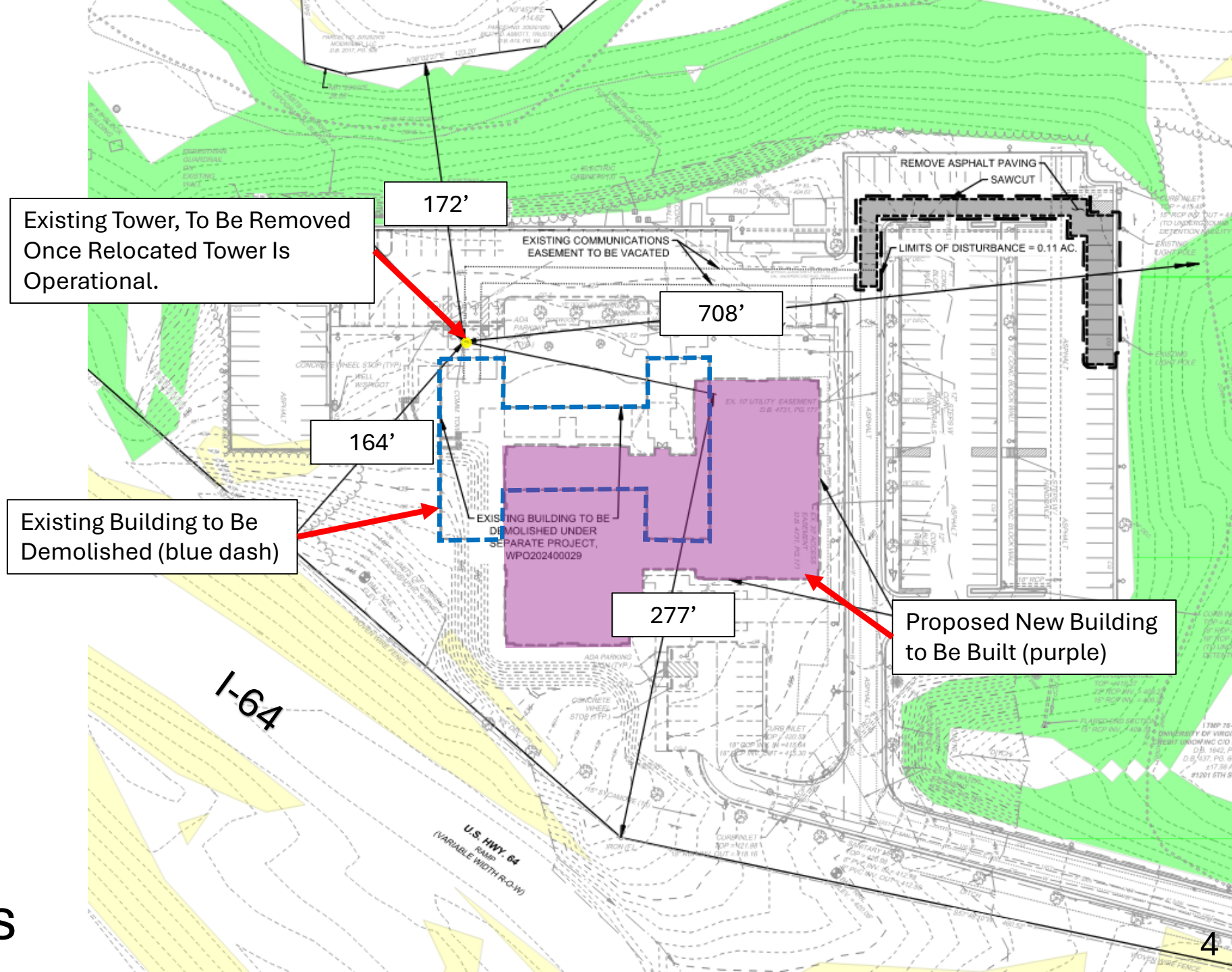


Vicinity Map



Site Map

Existing Conditions





Proposed New UVA Credit Union Headquarters Plan



Proposed New UVA Credit Union Headquarters Rendering



Existing Tower: View from 5th Street Looking South



Existing Tower: View from 5th Street at I-64 Interchange Looking North



Existing Tower: View from I-64W On Ramp Looking West



Existing Tower: View from I-64W Off-Ramp Looking West

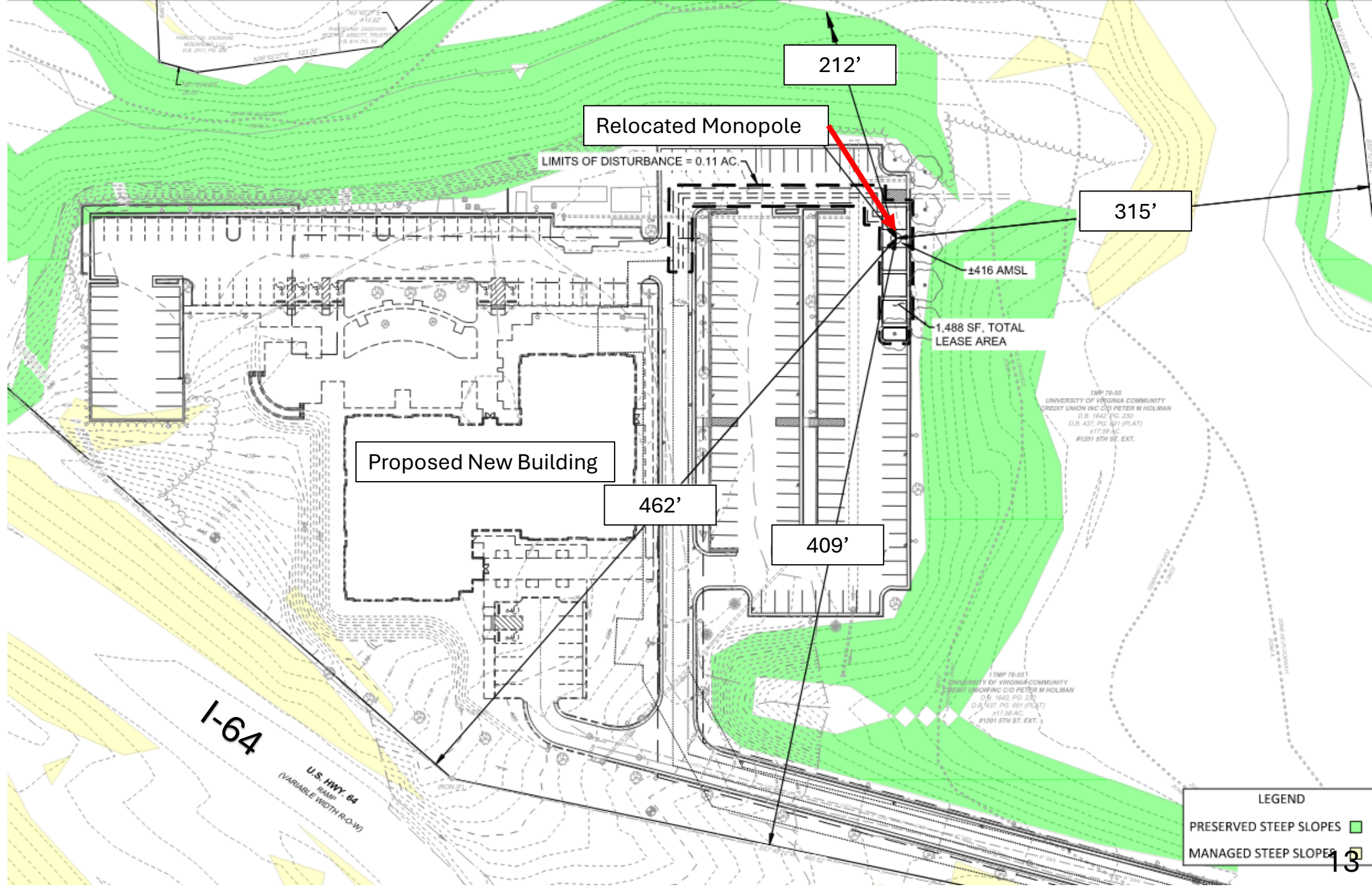


Existing Tower: View from I-64E Looking Northeast



Existing Tower: View from I-64W Looking Northwest

Concept Plan



LEGEND

- PRESERVED STEEP SLOPES ■
- MANAGED STEEP SLOPES ■

Distance from Tower to
Property Line: 315'

Distance from Property Line to
Townhomes: 348'

Total Distance from Tower to
Townhomes: 663'

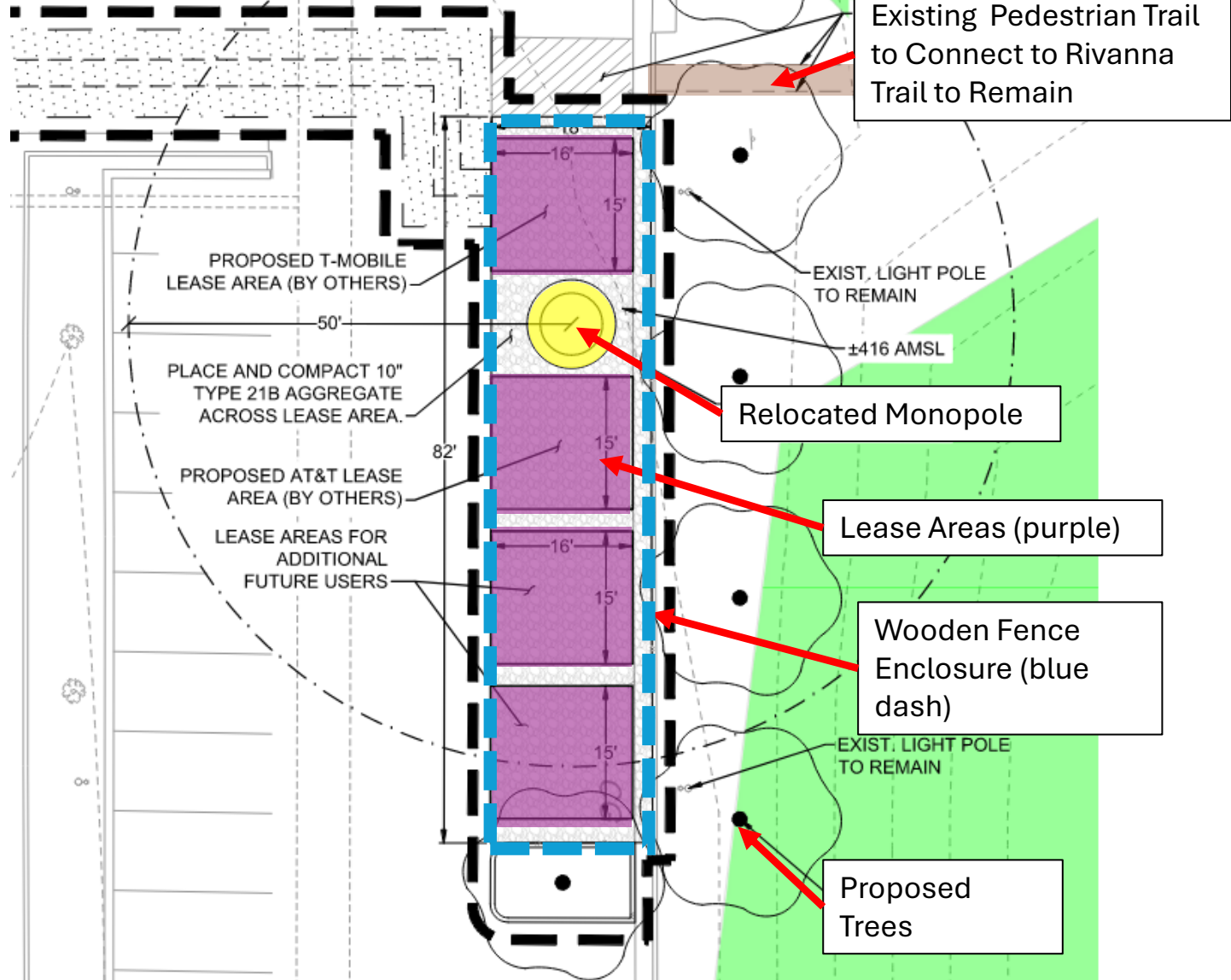


Distance from Northern Property Line to
Townhomes at Longwood in City of Charlottesville

Entrance Corridors	Existing Distance	Proposed Distance	Difference
Interstate 64	164'	462'	+ 298' further
5 th Street	277'	409'	+ 132' further
Western Boundary	172'	212'	+ 40' further
Northern Boundary	708'	315'	- 393' closer

F DISTURBANCE = 0.11 AC

CELL TOWER UTILITY CONNECTIONS TO BE DESIGNED BY OTHERS



Existing Pedestrian Trail to Connect to Rivanna Trail to Remain

Relocated Monopole

Lease Areas (purple)

Wooden Fence Enclosure (blue dash)

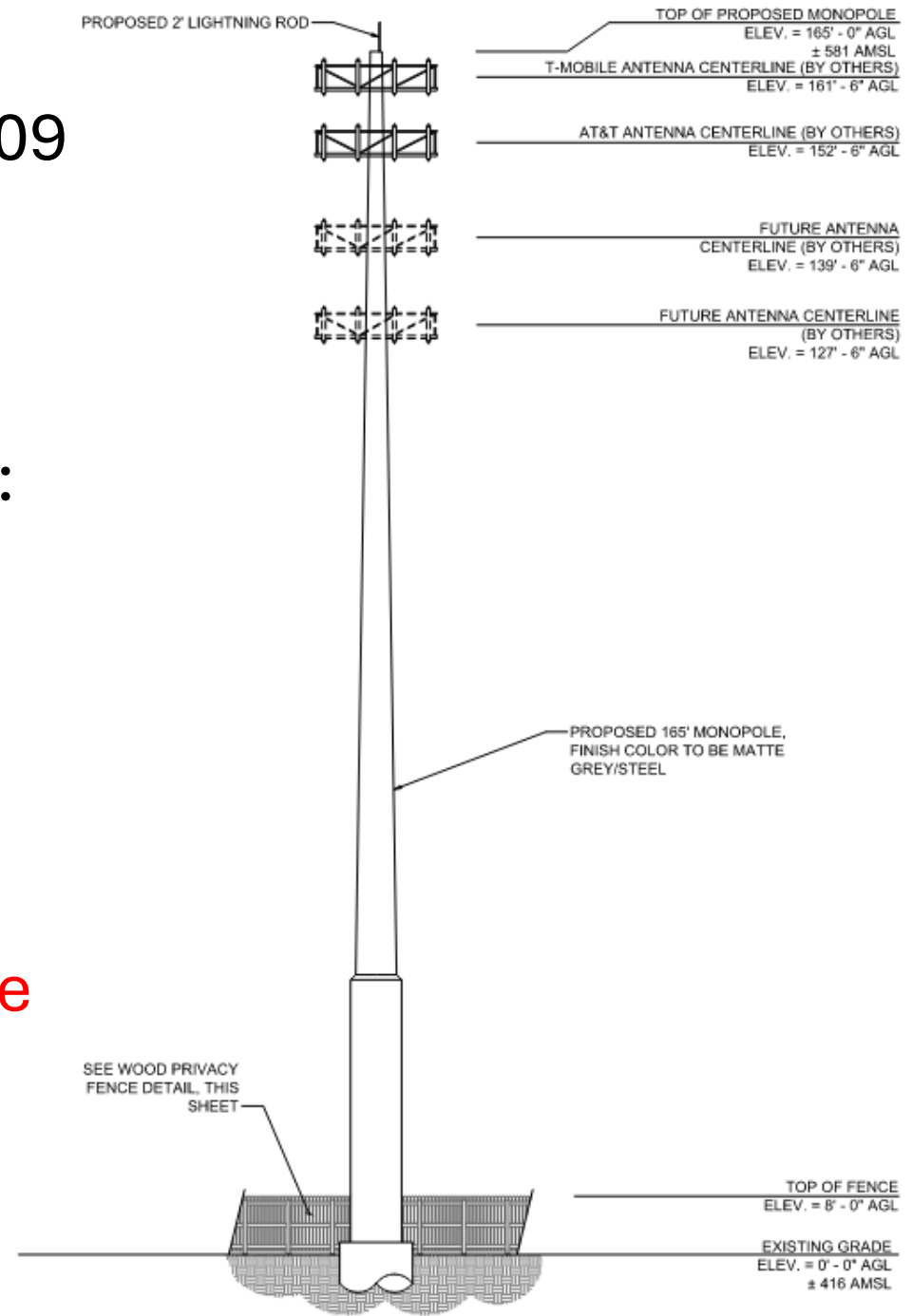
Proposed Trees

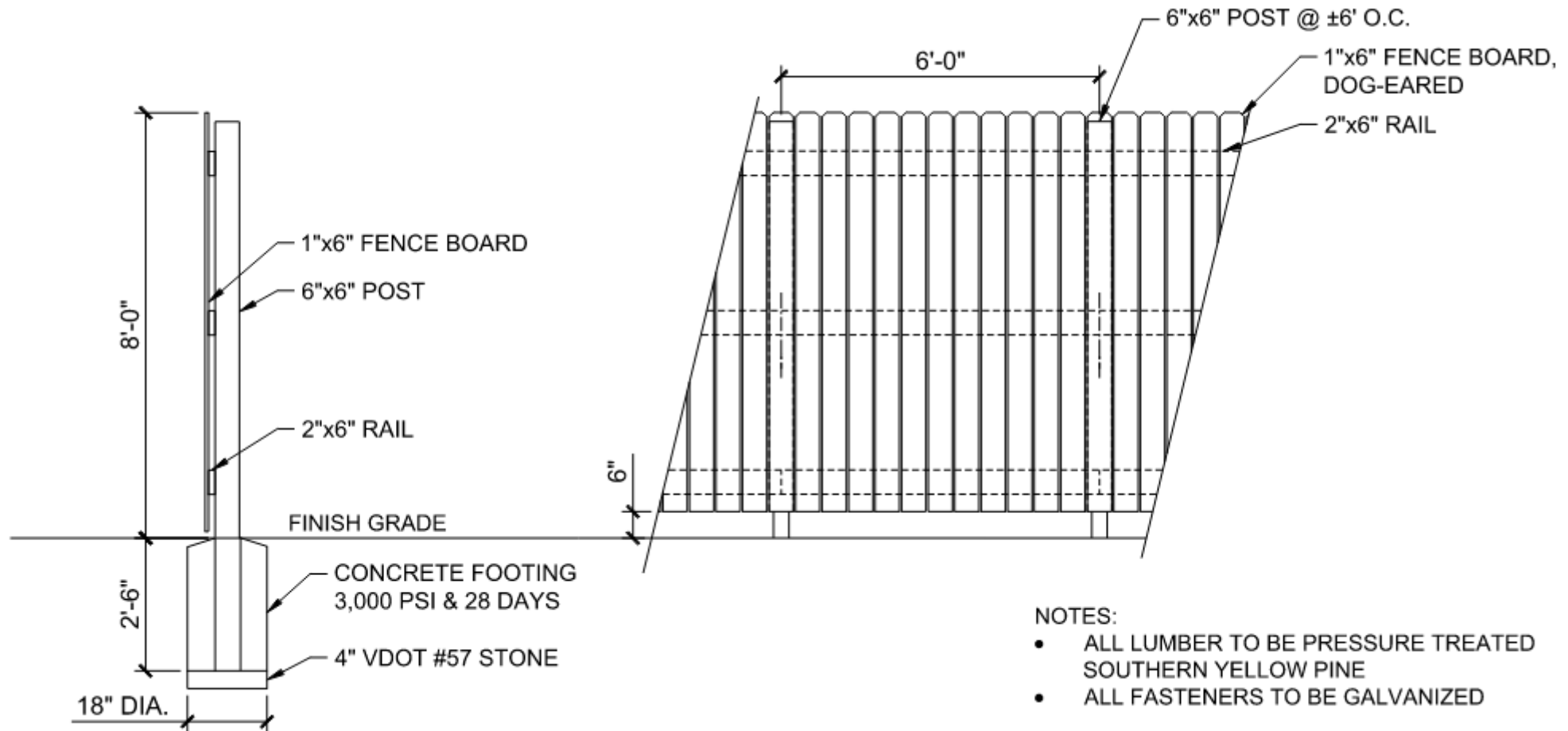
Concept Plan Enlargement

- Existing Height: 155'
 - approved for 160' per SP 1986-09
- Proposed Height: 165'
- Approx. Ground Elevation Change: 10' Lower
- Request of 5 Additional Feet from Prior Approved 1986 SP

No Appearance of Height Change Due to Lower Ground Elevation

Tower Elevation





8' Tall Wooden Fence Detail



Existing Tower: View from 5th Street at I-64 Interchange Looking North

SP 2024-19

UVA COMMUNITY CREDIT UNION
TOWER RELOCATION

1201 5TH STREET, CHARLOTTESVILLE VA, 22901

165ft. MONOPOLE SIMULATION

View from I-64 5th Street SW
approx. 1,130ft. south-southwest of site

Photograph #1





Existing Tower: View from I-64W Off-Ramp Looking West

SP 2024-19

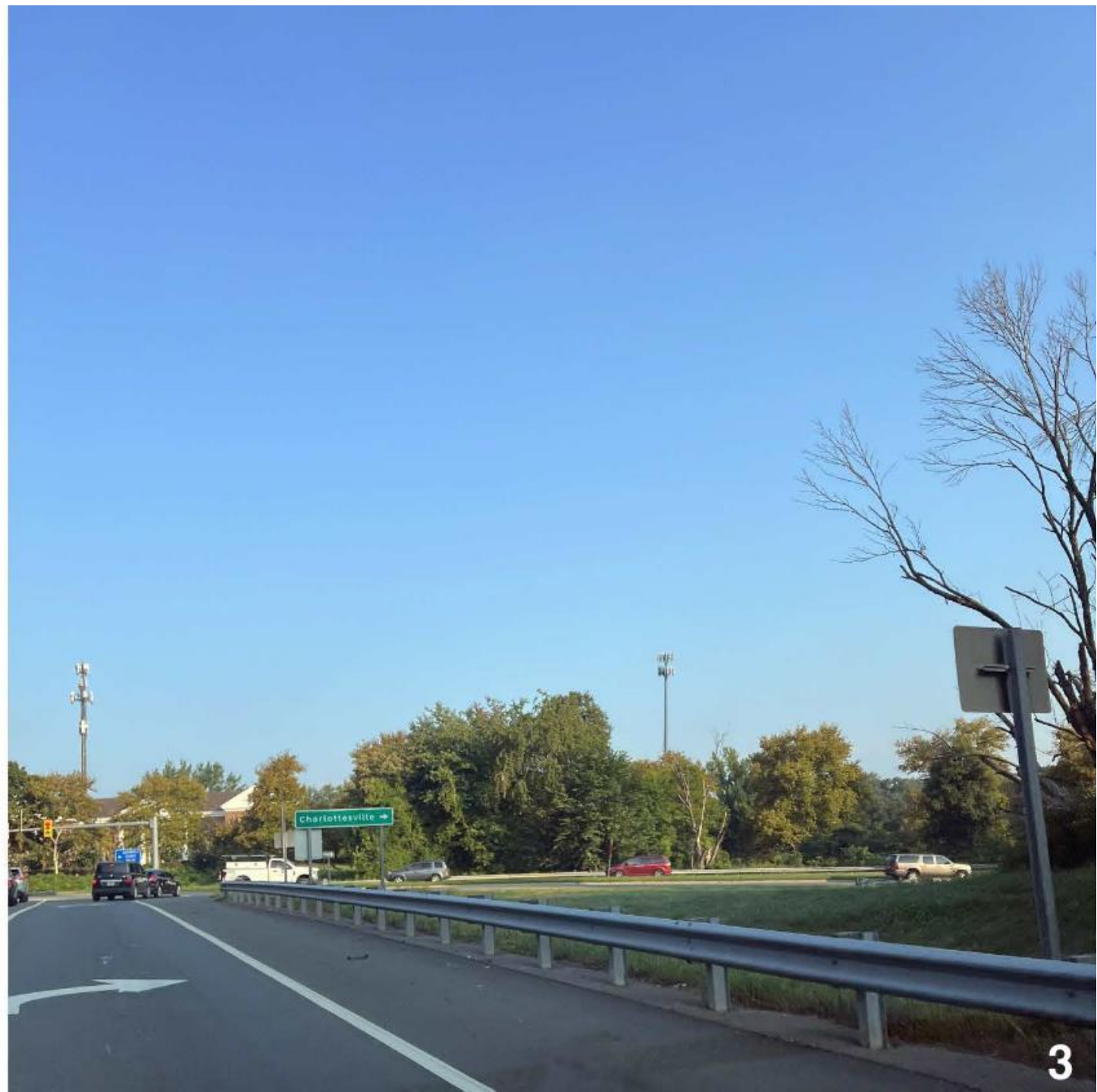
UVA COMMUNITY CREDIT UNION TOWER RELOCATION

1201 5TH STREET, CHARLOTTESVILLE VA, 22901

165ft. MONOPOLE SIMULATION

View from I-64 exist ramp to 5th Street
approximately 800ft. southeast of site

Photograph #2





Existing Tower: View from I-64W On Ramp Looking West



SP 2024-19

**UVA COMMUNITY CREDIT UNION
TOWER RELOCATION**

1201 5TH STREET, CHARLOTTESVILLE VA, 22901

**165ft. MONOPOLE
SIMULATION**

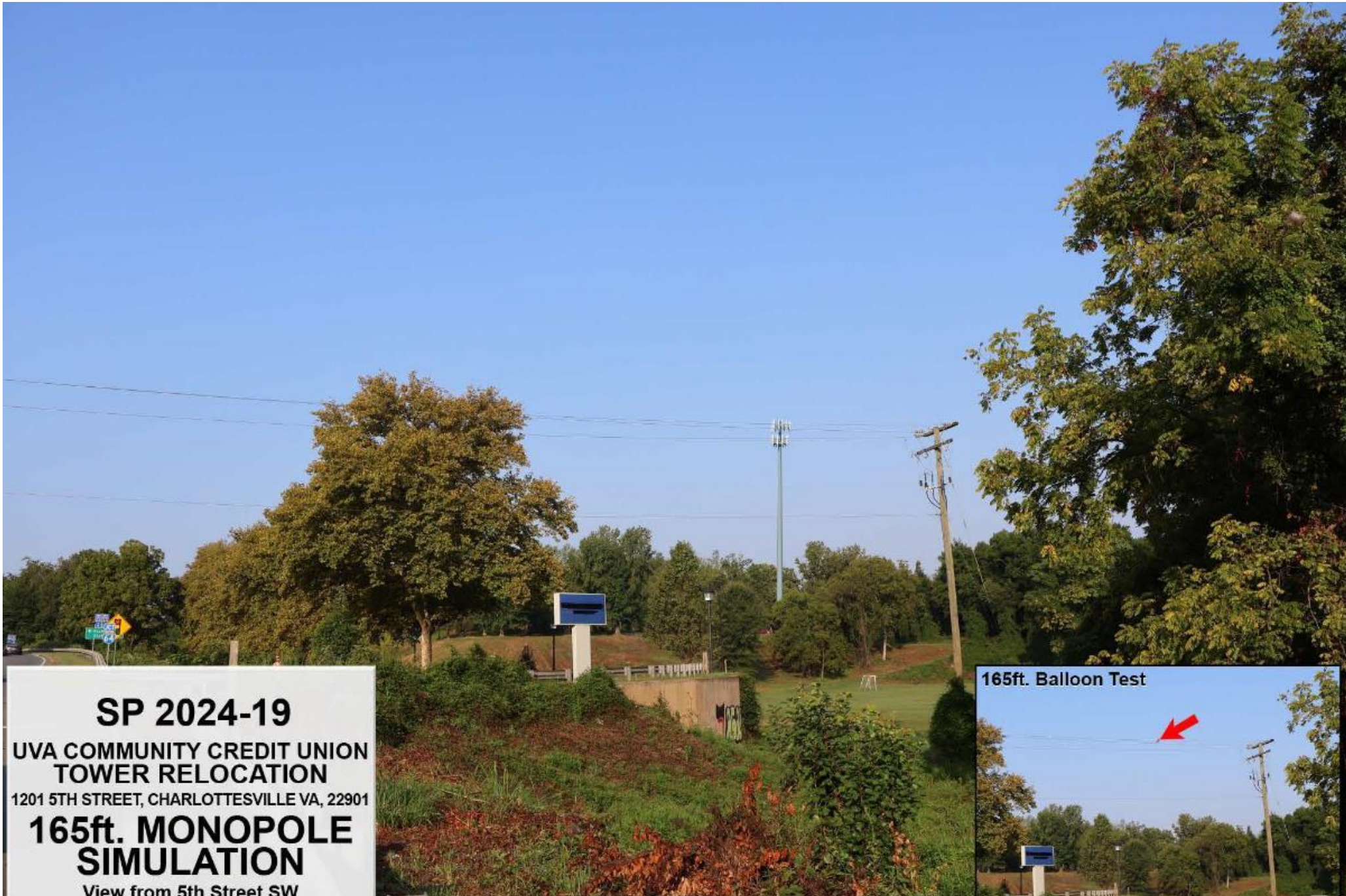
View from 5th Street SW
approx. 585ft. south-southeast of site

Photograph #3





Existing Tower: View from 5th Street Looking South



SP 2024-19
UVA COMMUNITY CREDIT UNION
TOWER RELOCATION
 1201 5TH STREET, CHARLOTTESVILLE VA, 22901
165ft. MONOPOLE
SIMULATION
 View from 5th Street SW
 approximately 850ft. east of site

Photograph #4





Existing Tower: View from I-64E Looking Northeast



SP 2024-19
**UVA COMMUNITY CREDIT UNION
TOWER RELOCATION**
1201 5TH STREET, CHARLOTTESVILLE VA, 22901
**165ft. MONOPOLE
SIMULATION**
View from Interstate 64 eastbound
approx. 1,940ft. west-southwest of site

Photograph #5



165ft. Balloon Test

Thank you

UVA COMMUNITY CREDIT UNION TOWER SIMULATION MAP SP 2024-019

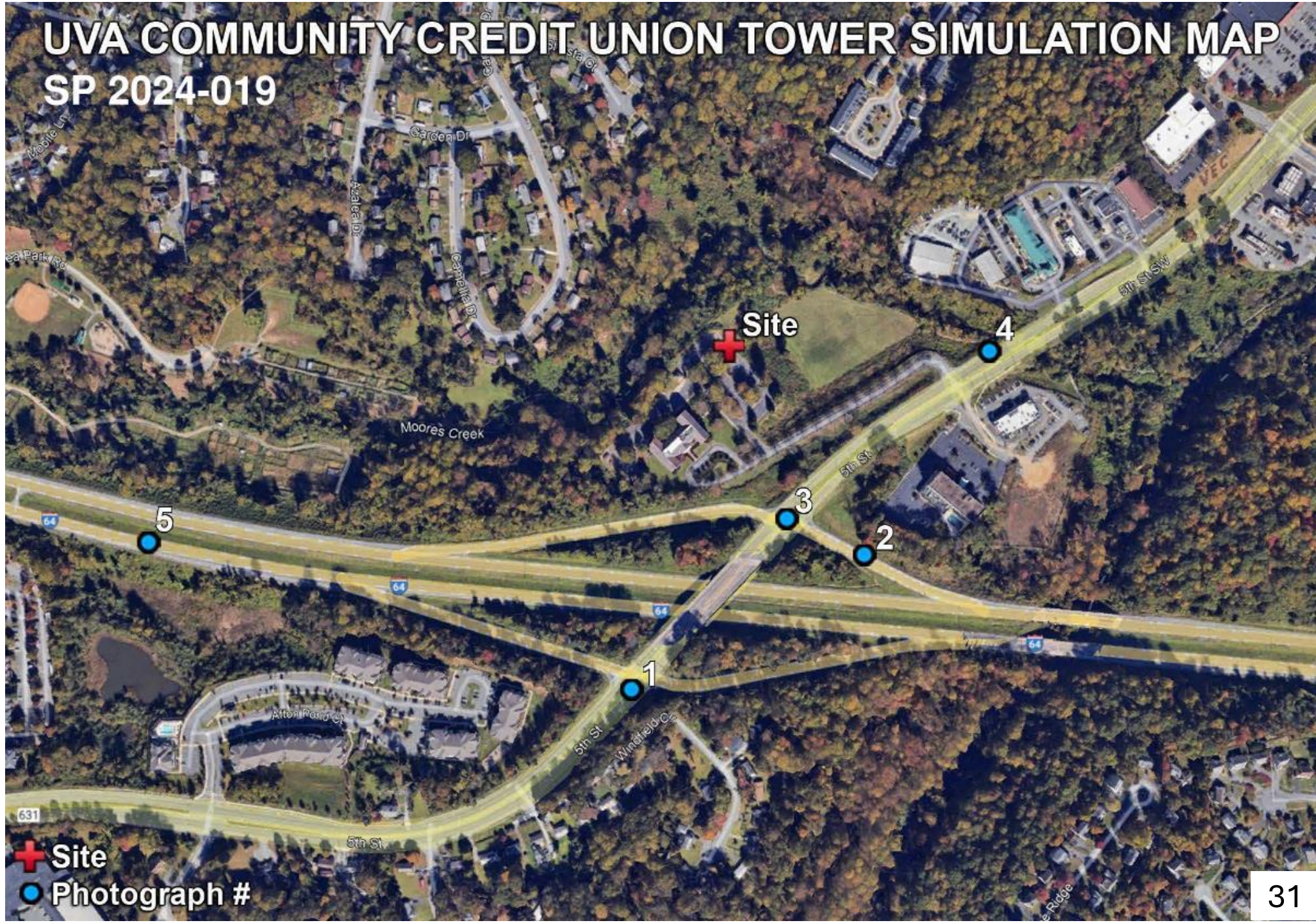
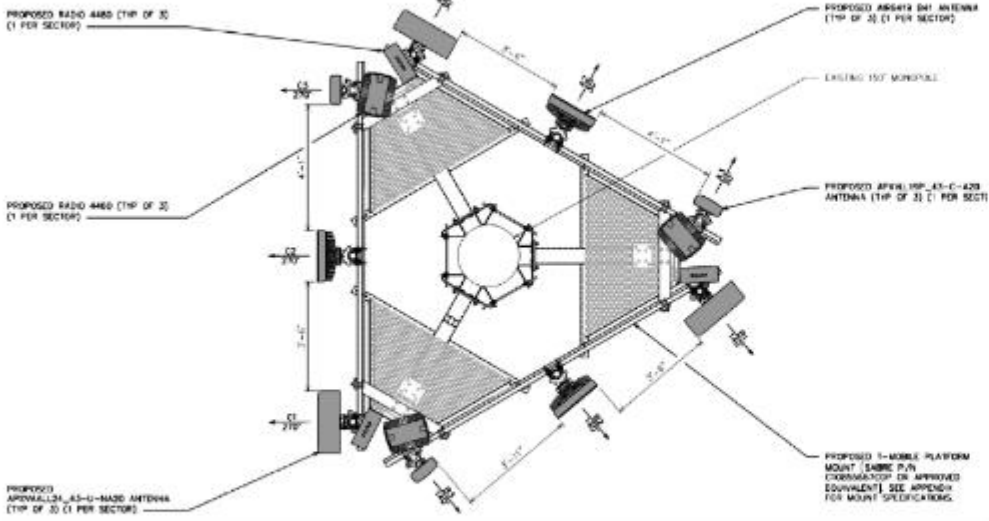


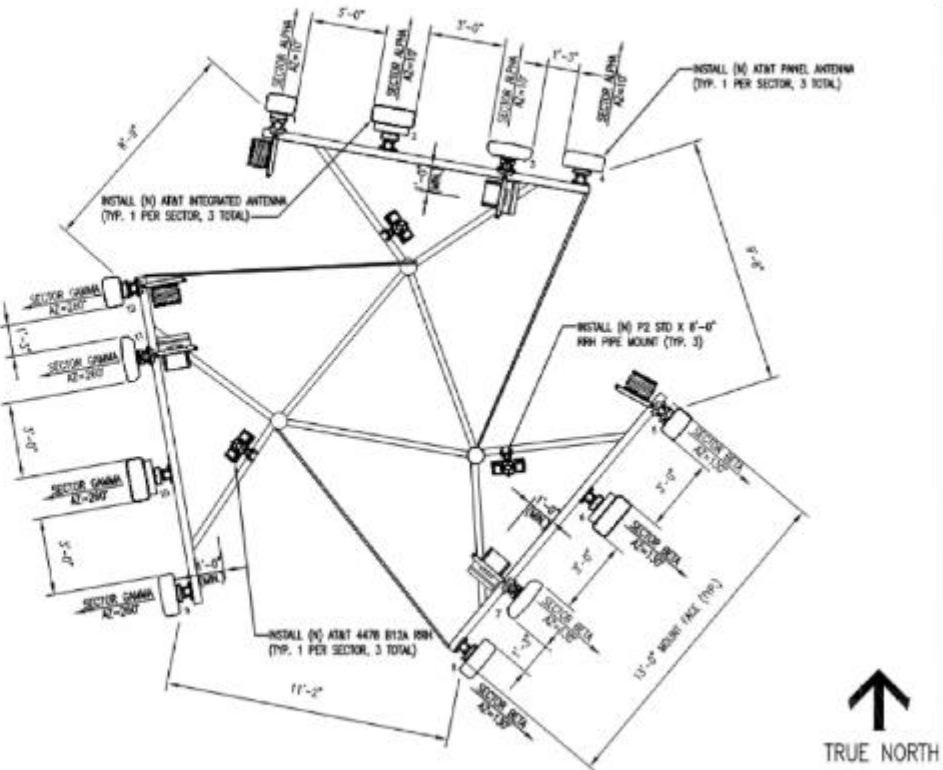
Photo
Simulation
Map

EXAMPLE T-MOBILE EQUIPMENT:



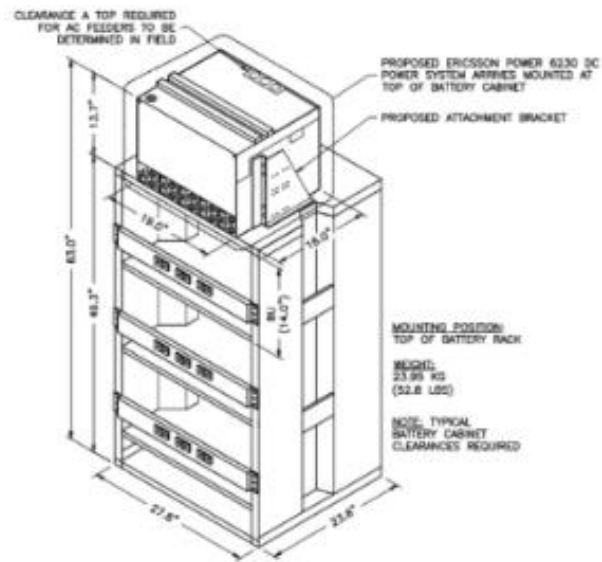
TYPICAL ANTENNA ARRAY DETAIL

EXAMPLE AT&T EQUIPMENT:

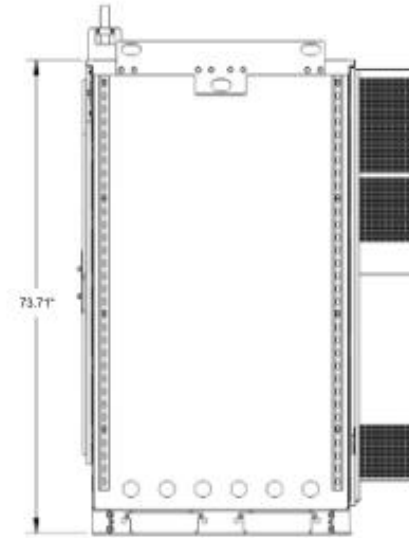


TYPICAL ANTENNA ARRAY DETAIL

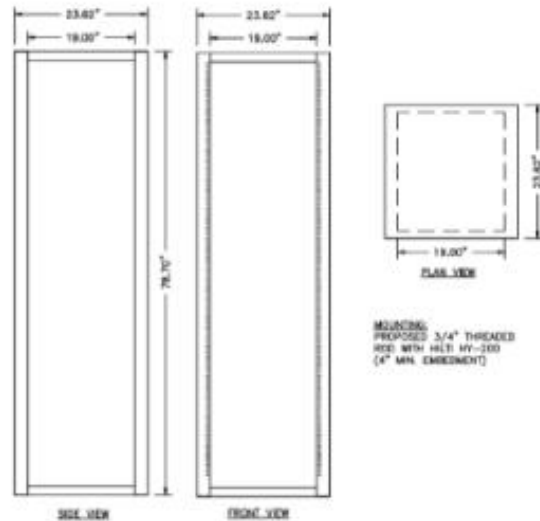
Example Equipment- Array



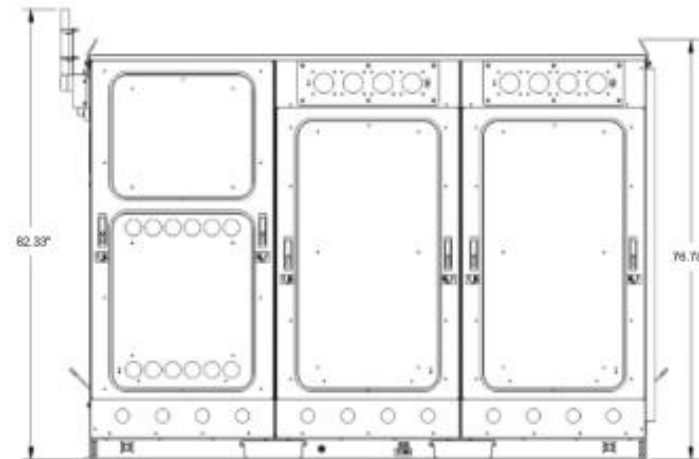
TYPICAL CABINET DETAIL



TYPICAL CABINET DETAIL - SIDE VIEW



TYPICAL RACKING DETAIL



TYPICAL CABINET DETAIL - FRONT VIEW

Example Equipment- Cabinets/Ground Equipment

Monopole Example
Color- Matte Steel
Gray

