

Legend
 (Note: Some items on map may not appear in legend)

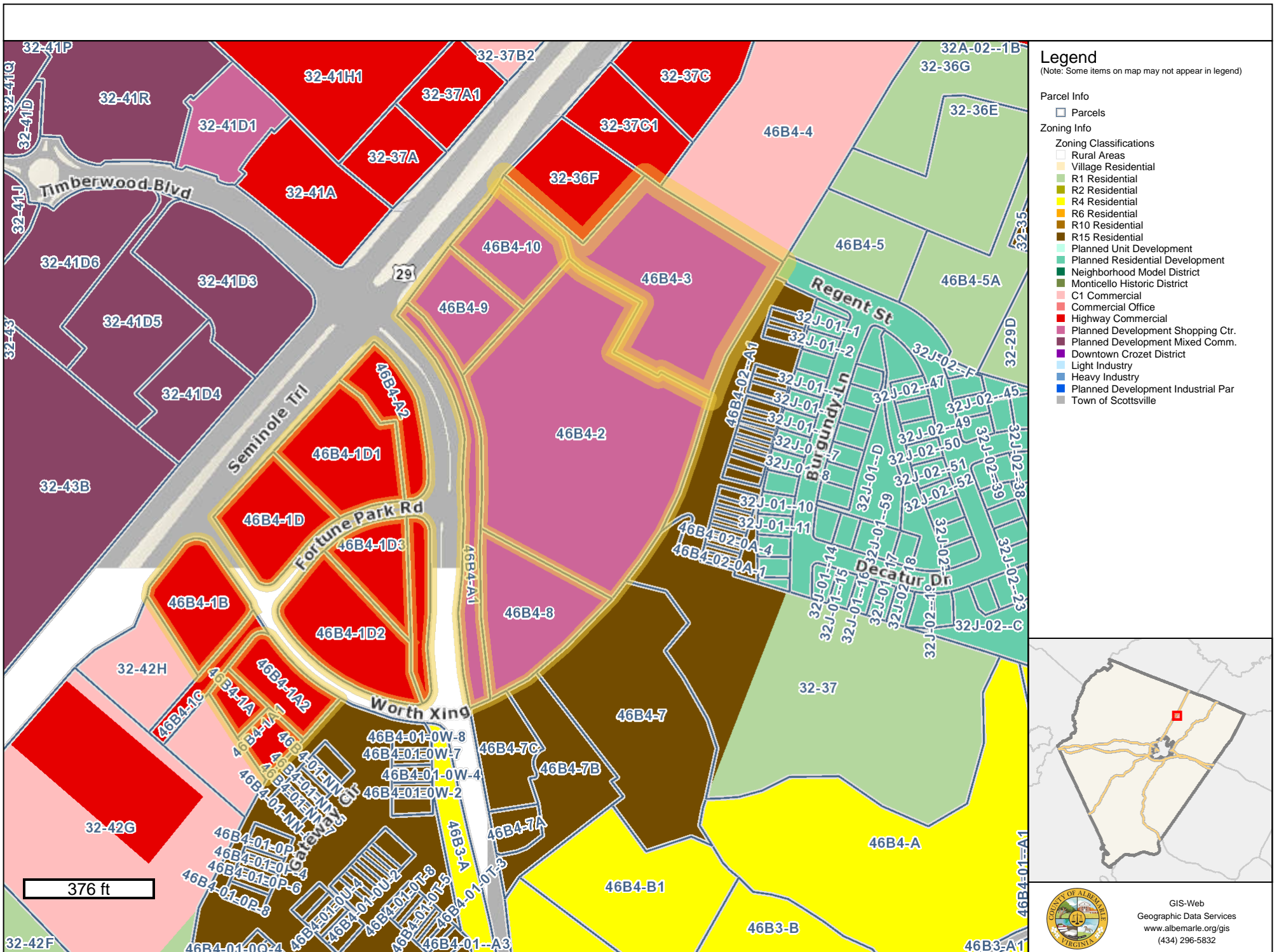
Parcel Info
 Parcels

376 ft



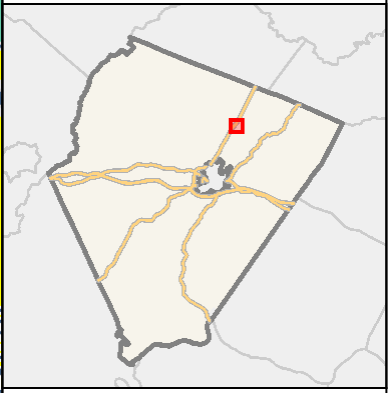
GIS-Web
 Geographic Data Services
www.albemarle.org/gis
 (434) 296-5832

Any determination of topography or contours, or any depiction of physical improvements, property lines or boundaries is for general information only and shall not be used for the design, modification, or construction of improvements to real property or for flood plain determination. Map elements may scale larger than GIS data measured in the map or as provided on the data download page due to the projection used. Map Projection: WGS84 Web Mercator (Auxiliary Sphere) (EPSG 3857)



Legend
 (Note: Some items on map may not appear in legend)

- Parcel Info**
- Parcels
- Zoning Info**
- Zoning Classifications**
- Rural Areas
 - Village Residential
 - R1 Residential
 - R2 Residential
 - R4 Residential
 - R6 Residential
 - R10 Residential
 - R15 Residential
 - Planned Unit Development
 - Planned Residential Development
 - Neighborhood Model District
 - Monticello Historic District
 - C1 Commercial
 - Commercial Office
 - Highway Commercial
 - Planned Development Shopping Ctr.
 - Planned Development Mixed Comm.
 - Downtown Crozet District
 - Light Industry
 - Heavy Industry
 - Planned Development Industrial Par
 - Town of Scottsville



GIS-Web
 Geographic Data Services
www.albemarle.org/gis
 (434) 296-5832