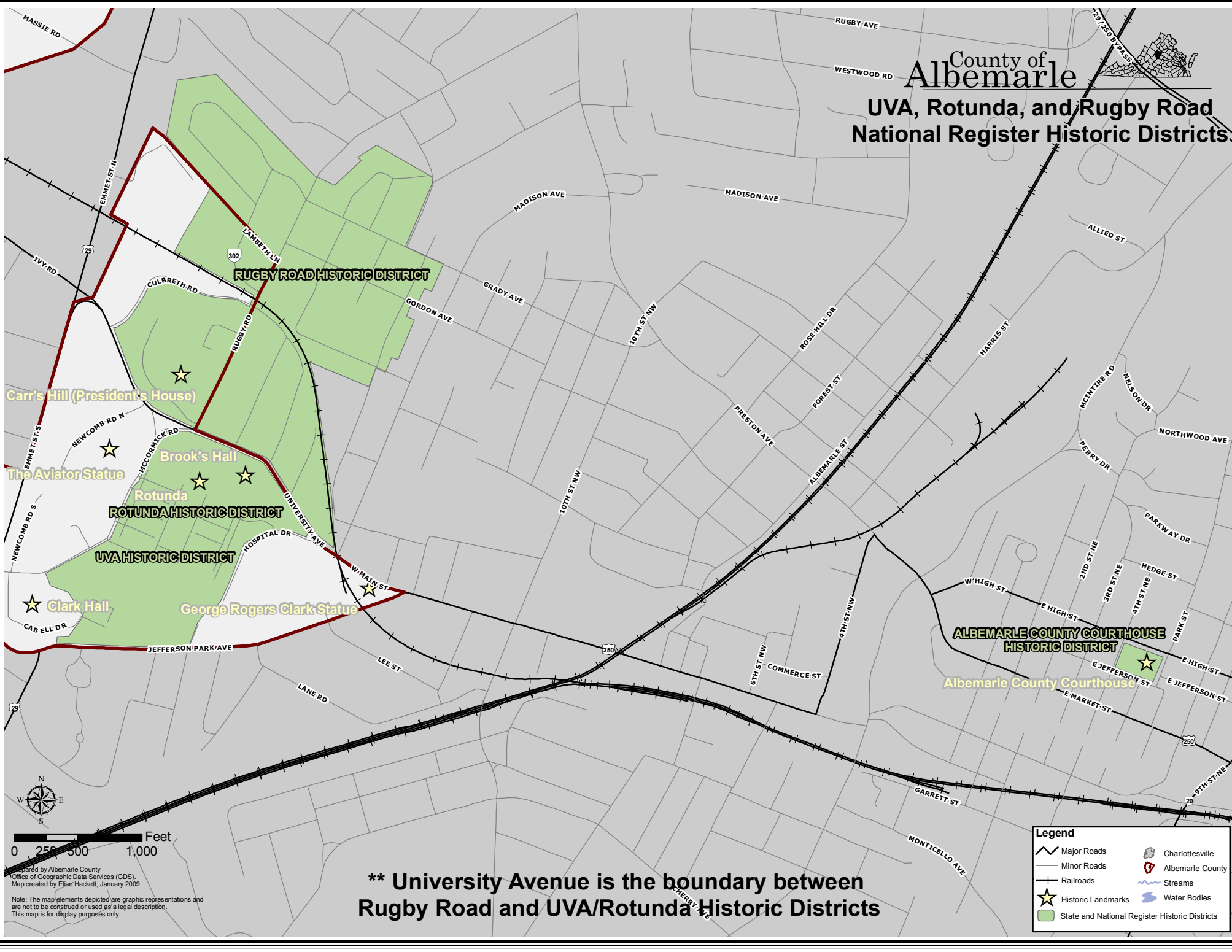


**UVA, Rotunda, and Rugby Road
National Register Historic Districts**



Carr's Hill (President's House)

The Aviator Statue

Brook's Hall

Rotunda

ROTUNDA HISTORIC DISTRICT

UVA HISTORIC DISTRICT

Clark Hall

George Rogers Clark Statue

ALBEMARLE COUNTY COURTHOUSE
HISTORIC DISTRICT

Albemarle County Courthouse

**** University Avenue is the boundary between
Rugby Road and UVA/Rotunda Historic Districts**



0 250 500 1,000 Feet

Prepared by Albemarle County
Office of Geographic Data Services (GDS).
Map created by Elise Hackett, January 2009.

Note: The map elements depicted are graphic representations and are not to be construed or used as a legal description. This map is for display purposes only.

Legend	
	Charlotteville
	Albemarle County
	Streams
	Water Bodies