

NOTE: SITE PLAN PREPARED IN REFERENCE TO THE LANDLORD CIVIL PLAN RECEIVED: 3/19/2021.

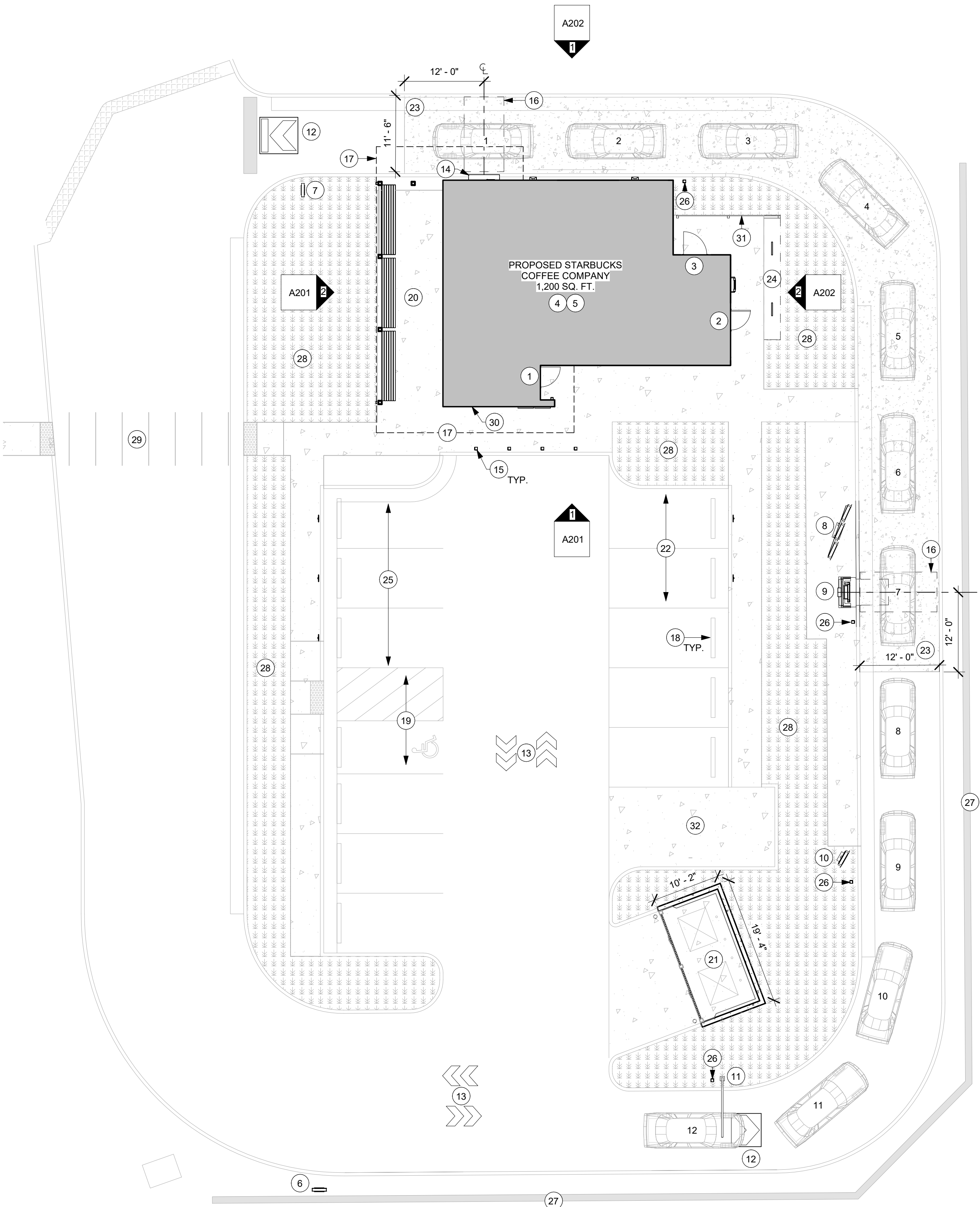
NOTE: ALL SIGNAGE UNDER SEPARATE PERMIT, SHOWN FOR COORDINATION PURPOSES ONLY.

KEYED NOTES

- 36" SERVICE DOOR BY LL.
- 36" CUSTOMER RESTROOM DOOR BY LL.
- 42" REAR SERVICE DOOR BY LL.
- TENANT'S SIGNAGE VENDOR TO COORDINATE APPROVALS AND PERMITS FOR EXTERIOR SIGNAGE SEPARATELY AS REQUIRED. **NOT INCLUDED IN TENANT BUILD-OUT APPLICATION.**
- PROVIDE PROTECTIVE BOLLARDS ON BOTH SIDES OF EXTERIOR UTILITY SERVICES ADJACENT TO VEHICULAR TRAFFIC. EXAMPLES INCLUDE FIRE STAND PIPE, GAS, AND ELECTRICAL METERS, SITE TRANSFORMERS, ETC.
- FREESTANDING ILLUMINATED DRIVE THRU DIRECTIONAL SIGN. LL TO PROVIDE AND INSTALL CONDUIT, FOOTING, AND ANCHOR BOLTS PER LLWL.
- FREESTANDING ILLUMINATED DRIVE THRU 'EXIT ONLY / THANK YOU' SIGN. LL TO PROVIDE AND INSTALL CONDUIT, FOOTING, AND ANCHOR BOLTS PER LLWL.
- 5-PANEL FREESTANDING MENU BOARD. LL TO PROVIDE AND INSTALL CONDUIT, FOOTING, AND ANCHOR BOLTS PER LLWL.
- DIGITAL ORDER SCREEN AND CANOPY. LL TO PROVIDE AND INSTALL CONDUIT, FOOTING, AND ANCHOR BOLTS PER LLWL. REFER TO DOS CONTROL BOX DETAILS FOR MORE INFO.
- FREESTANDING PRE MENU BOARD. LL TO PROVIDE AND INSTALL CONDUIT, FOOTING, AND ANCHOR BOLTS PER LLWL.
- FREESTANDING CLEARANCE BAR. LL TO PROVIDE AND INSTALL FOOTING AND ANCHOR BOLTS PER LLWL.
- WAYFINDING ENTRY & EXIT GRAPHICS. REFER TO SITE DETAILS FOR MORE INFORMATION.
- WAYFINDING DOUBLE ARROWS ON PAVEMENT. REFER TO SITE DETAILS FOR MORE INFORMATION.
- DRIVE-THRU WINDOW, HAND-OFF SHELF, AND AIR CURTAIN BY LL.
- 5" SQUARE NON-ILLUMINATED BOLLARD AT WALK-UP PICK-UP WINDOW AREA AS INDICATED.
- INSTALL VEHICLE DETECTOR LOOP @ CENTERLINE FOR ORDER POINT & DRIVE THRU WINDOW. LL TO PROVIDE CONDUIT PER LLWL. REFER TO SITE DETAILS FOR MORE INFORMATION.
- INDICATES CANOPY ABOVE.
- WHEEL STOPS, TYPICAL.
- ADA PARKING AND STRIPING.
- OUTDOOR PATIO AREA.
- CMU TRASH ENCLOSURE. SEE DETAILS FOR MORE INFO. SIZE AND LOCATION TO BE COORDINATED WITH CIVIL.
- TWO MOBILE ORDER PAY PARKING ONLY* SIGNS. LL TO PROVIDE FOOTING, SIGN BY STARBUCKS, INSTALLED BY SIGNAGE VENDOR.
- LL TO PROVIDE 6" THICK, NORMAL WEIGHT, REINFORCED CONCRETE PAVING THROUGHOUT DRIVE-THRU LANE. CONCRETE SHALL EXTEND WIDTH OF DRIVE-THRU LANE OR MINIMUM 12'-0" FROM EDGE OF CURB. THE LENGTH SHALL EXTEND FROM ENTRY OF THE DRIVE THRU LANE [12 FEET FROM THE CENTERLINE OF THE MENU BOARD] TO 12 FEET BEYOND THE CENTERLINE OF THE DRIVE THRU WINDOW.
- BIKE RACKS BY LL.
- THREE CURB SIDE PICK UP PARKING ONLY* SIGNS. LL TO PROVIDE FOOTING AND POST, SIGN BY STARBUCKS, INSTALLED BY SIGNAGE VENDOR.
- 5" SQUARE NON-ILLUMINATED BOLLARD.
- RETAINING WALL
- LANDSCAPE AREA.
- ACCESSIBLE PATH OF TRAVEL TO PUBLIC WAY.
- WALK-UP PICK-UP WINDOW AND AIR CURTAIN BY LL.
- REAR SERVICE DOOR / UTILITY SCREEN. SEE DETAIL FOR MORE INFO.
- LOADING SPACE PER CIVIL.

GENERAL NOTES

- REFER TO EXTERIOR ELEVATIONS ON SHEET A201 FOR BUILDING SIGNAGE LOCATION AND DESIGN ID. REFER TO ELECTRICAL PLANS FOR ELECTRICAL REQUIREMENTS.
- LANDSCAPING TO BE PROVIDED PER ZONING CODE AND SUSTAINABILITY REQUIREMENTS.
- DRIVE-THRU EQUIPMENT INCLUDING VEHICLE DETECTION LOOP, WIRELESS COMMUNICATION AND MONITORS SHALL BE COORDINATED BY STARBUCKS CONSTRUCTION MANAGER. REFER TO ELECTRICAL DRAWINGS FOR ADDITIONAL REQUIREMENTS.
- GENERAL CONTRACTOR TO INSTALL TWO (2) STARBUCKS PROVIDED DETECTOR LOOP CONDUITS. ONE CONDUIT AT THE ORDER POINT AND ONE CONDUIT AT THE DRIVE THROUGH WINDOW PRIOR TO INSTALLATION OF THE DRIVE LANE SURFACE. PER STARBUCKS REQUIREMENTS DOCUMENT.
- PROVIDE DETECTABLE WARNING (IF APPLICABLE PER LOCAL CODE) AT TRANSITION FROM SIDEWALK TO DRIVE AISLE.
- ACCESSIBLE PARKING SPACES AND ACCESS AISLES SHALL HAVE SURFACE SLOPE NOT TO EXCEED 2% IN ALL DIRECTIONS.
- REFER TO ELECTRICAL DRAWINGS FOR SITE RELATED ELECTRICAL WORK.

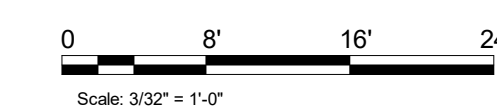


ARCHITECTURAL SITE PLAN - FOR REFERENCE ONLY

Scale: 3/32" = 1'-0"

LEGEND

- LANDSCAPE AREA
- NEW CONCRETE DRIVE THRU LANE



PROJECT

NORR PROJECT NO.: 21-0014-00

29N + SEMINOLE LANE
FUTURE STARBUCKS

2231 Seminole Lane
Charlottesville, Virginia 22901
Albemarle County

DEVELOPER

COMMERCIAL RENTALS LLC
1024 Carrington Place, Suite 100
Charlottesville, Virginia 22901
[434] 989.8667

ARCHITECT

NORR

325 North La Salle Street, Suite 500
Chicago, Illinois 60654
norr.com

STRUCTURAL ENGINEER

PILOTTOWN ENGINEERING
17585 Nassau Commons Boulevard, Unit 3
Lewes, Delaware 19958
[302] 703.1770

MEP ENGINEER

ALKEMEYER & ASSOCIATES
353 Marshall Avenue
St. Louis, Missouri 63119
[314] 772.1782

CIVIL ENGINEER

TIMMONS GROUP
608 Preston Avenue, Suite 200
Charlottesville, Virginia 22903
[434] 327.1688

NOTES

This drawing has been prepared solely for the use of the client, and there are no representations of any kind made by NORR to any party with whom NORR has not entered into a contract.

SHEET INFORMATION

ISSUES / REVISIONS

NO.	DATE	DESCRIPTION
01	03.19.2021	20% SET

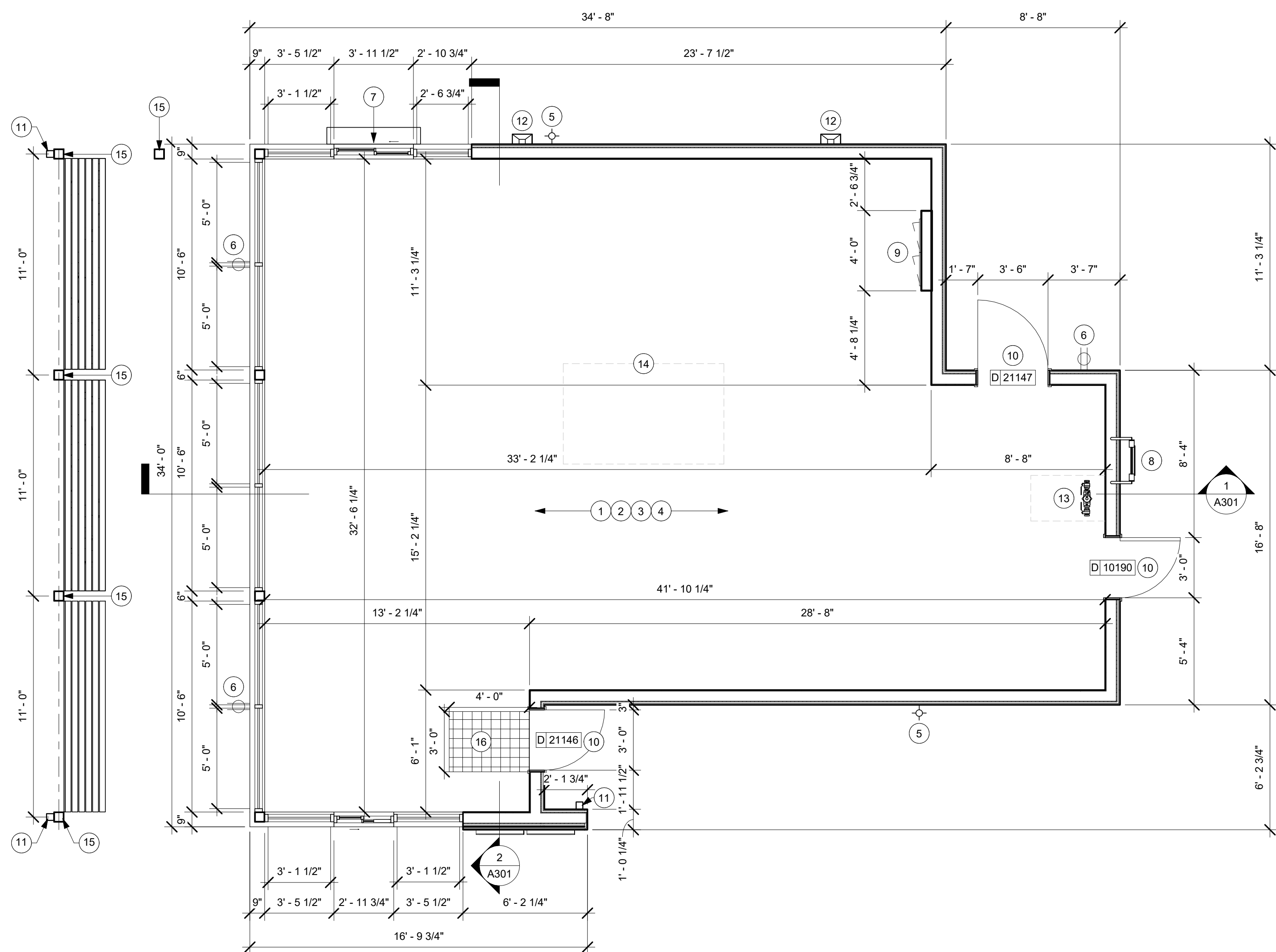
SHEET TITLE

ARCHITECTURAL SITE PLAN

SHEET NUMBER

A001

PROFESSIONAL STAMP



BUILDING FLOOR PLAN

Scale: 1/4" = 1'-0"

KEYED NOTES

1. LL TO PROVIDE FULL SLAB LEAVE OUT FOR FUTURE TENANT CONSTRUCTION. SUB-GRADE SHALL BE CLEAN, STRUCTURAL GRADE FILL MADE LEVEL TO BE 4" BELOW FINISHED GRADE AND COMPACTED IN ACCORDANCE WITH LANDLORD'S GEOTECHNICAL REPORT.
2. R-10 RIGID FOAM INSULATION BELOW SLAB BY TENANT. SEE BUILDING SECTIONS FOR ADDITIONAL INFORMATION.
3. BATT INSULATION AT ALL EXTERIOR WALLS TO BE R-21 MINIMUM PER LLWL.
4. R-38 CONTINUOUS RIGID INSULATION FOR ROOF PER LLWL.
5. RECESSED, LOCKABLE, COVERED, FROST-FREE HOSE BIB, SEE PLUMBING SHEETS FOR ADDITIONAL INFORMATION.
6. COVERED EXTERIOR GFCI ELECTRICAL OUTLET. SEE ELECTRICAL SHEETS FOR ADDITIONAL INFORMATION.
7. DRIVE THRU WINDOW, AIR CURTAIN, AND SHELF BY LL.
8. ROOF ACCESS LADDER WITH LOCKABLE LADDER GUARD CAGE.
9. RECESSED ELECTRICAL PANELS PER TENANT'S SCHEMATIC. MAINTAIN MINIMUM CLEARANCE AS REQUIRED BY CODE.
10. LL TO INSTALL NEW DOORS AS INDICATED. SEE SHEET A602 FOR DOOR AND HARDWARE TYPE.
11. CANOPY DOWNSPOUT CONNECTED TO UNDERGROUND DRAINAGE SYSTEM BELOW FROST LINE; REFER TO CIVIL DRAWINGS FOR ADDITIONAL INFORMATION.
12. PARAPET SCUPPER AND DOWNSPOUT CONNECTED TO STORM DRAINAGE LINES BELOW; REFER TO CIVIL DRAWINGS FOR CONTINUATION.
13. PRELIMINARY BACKFLOW PREVENTER LOCATION. FURNISH AND INSTALL AN APPROVED, TESTED, AND CERTIFIED BFP ASSEMBLY, IF REQUIRED BY APPLICABLE CODES. IN A LOCATION IDENTIFIED ON THE LANDLORD'S CONSTRUCTION DOCUMENTS AND APPROVED BY TENANT. REFER TO PLUMBING DRAWINGS FOR ADDITIONAL INFORMATION.
14. ROOFTOP RTU LOCATION; TO BE COORDINATED.
15. COLUMN FOR PATIO CANOPY.
16. LANDLORD GC TO LOWER PORTION OF RIBBON SLAB BY 1/2" IN PREPARATION FOR TENANT PROVIDED WALK OFF MAT.

GENERAL NOTES

- A. GENERAL CONTRACTOR TO VERIFY ALL DIMENSIONS AND NOTIFY STARBUCKS CONSTRUCTION MANAGER OF ANY DISCREPANCIES PRIOR TO CONSTRUCTION. ALL DIMENSIONS TO BE TAKEN FROM DESIGNATED DATUM POINT.
- B. IF EXISTING EXTERIOR ENTRANCE THRESHOLD EXCEEDS REQUIRED AMERICAN'S WITH DISABILITY ACT (ADA) MAXIMUM HEIGHT OF 1/2" (10MM), REMOVE AND REPLACE WITH ACCESSIBLE THRESHOLD. RAISED THRESHOLDS AND FLOOR LEVEL CHANGES AT ACCESSIBLE DOORWAYS TO BE BEVELED WITH A SLOPE NO GREATER THAN 1:12.
- C. VERIFY ALL EXISTING DOORS, HARDWARE AND FRAMES MEET STARBUCKS AND/OR LOCAL CODE REQUIREMENTS.
- D. ALL DIMENSIONS ARE TO FINISHED FACE UNLESS SHOWN OR NOTED OTHERWISE.
- E. SEE SHEET A602 FOR EXTERIOR DOOR AND WINDOW SCHEDULES.
- F. FLOOR FINISHES TO BE INCLUDED IN TI PACKAGE.

PROJECT
NORR PROJECT NO.: 21-0014-00

**29N + SEMINOLE LANE
FUTURE STARBUCKS**

2231 Seminole Lane
Charlottesville, Virginia 22901
Albemarle County

DEVELOPER

COMMERCIAL RENTALS LLC
1024 Carrington Place, Suite 100
Charlottesville, Virginia 22901
[434] 989.8667

ARCHITECT



325 North La Salle Street, Suite 500
Chicago, Illinois 60654
norr.com

STRUCTURAL ENGINEER

PILOTTOWN ENGINEERING
17585 Nassau Commons Boulevard, Unit 3
Lewes, Delaware 19958
[302] 703.1770

MEP ENGINEER

ALKEMEYER & ASSOCIATES
353 Marshall Avenue
St. Louis, Missouri 63119
[314] 772.1782

CIVIL ENGINEER

TIMMONS GROUP
608 Preston Avenue, Suite 200
Charlottesville, Virginia 22903
[434] 327.1688

NOTES

This drawing has been prepared solely for the use of the client, and there are no representations of any kind made by NORR to any party with whom NORR has not entered into a contract.

SHEET INFORMATION

ISSUES / REVISIONS

NO.	DATE	DESCRIPTION
01	03.19.2021	20% SET

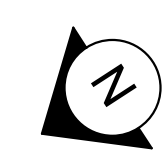
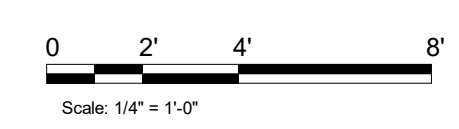
SHEET TITLE

BUILDING FLOOR PLAN

SHEET NUMBER

A100

PROFESSIONAL STAMP



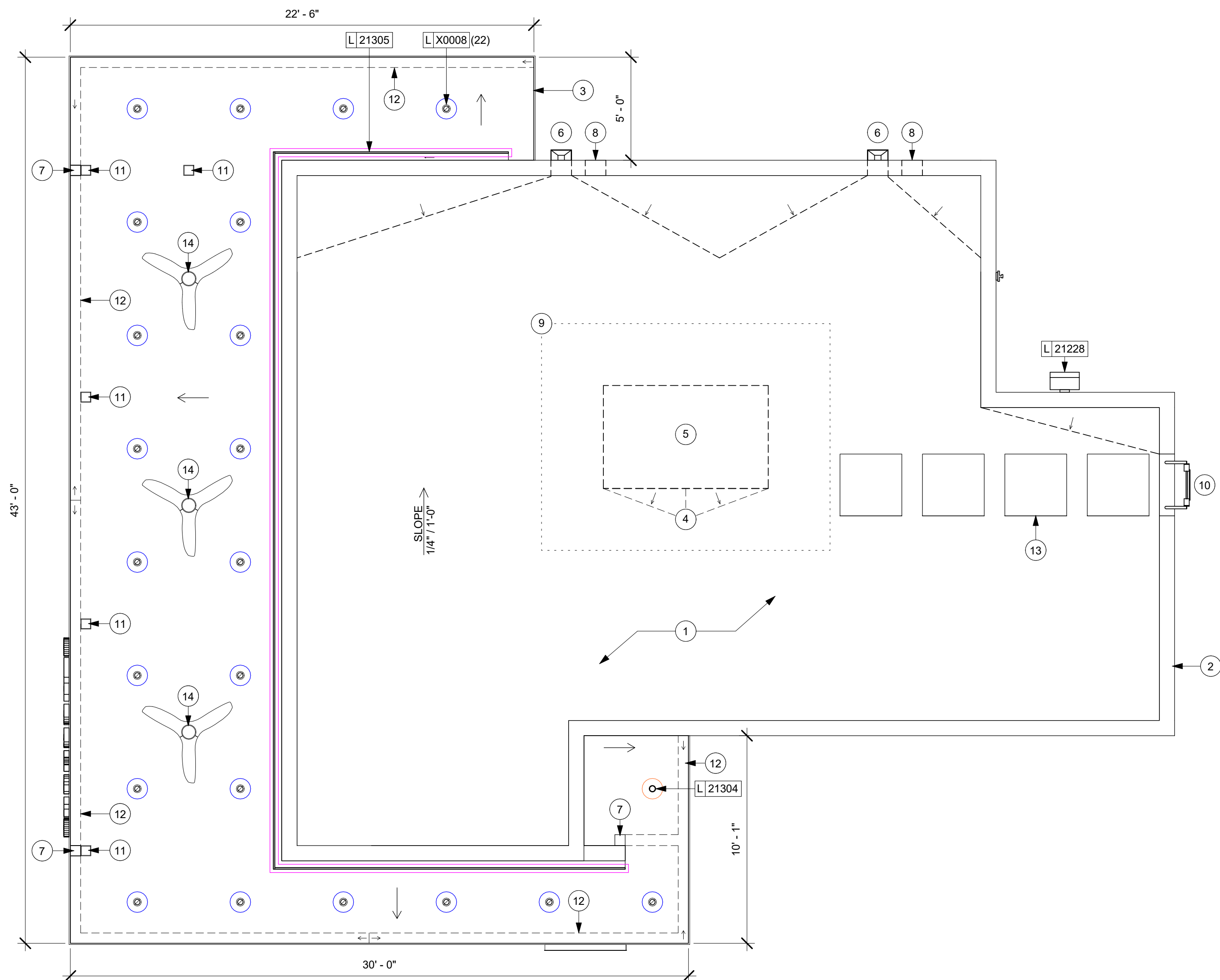
KEYED NOTES

1. FULLY ADHERED ROOFING SYSTEM OVER R-38 MINIMUM RIGID INSULATION.
2. PREFINISHED METAL COPING - SEE ELEVATIONS FOR FINISH.
3. CUSTOM METAL CANOPY - SEE DETAILS.
4. TAPERED RIGID INSULATION AT CRICKET SLOPED AT MIN. 2.0 TIMES OVERALL ROOF SLOPE. ALL ROOF SLOPE SHOULD HAVE A DRAINAGE POSITIVE SLOPE.
5. ROOF TOP UNITS PLACED ON CURB - SEE DETAILS. VERIFY EXACT LOCATION IN FIELD WITH MECHANICAL.
6. PARAPET SCUPPER AND DOWNSPOUT CONNECTED TO STORM DRAINAGE LINES BELOW - REFER TO CIVIL DRAWINGS FOR CONTINUATION.
7. CANOPY DOWNSPOUTS CONNECTED TO UNDERGROUND DRAINAGE SYSTEM BELOW FROST LINE; REFER TO CIVIL DRAWINGS FOR ADDITIONAL INFORMATION. COORDINATE WITH STRUCTURAL COLUMNS AS NECESSARY.
8. THROUGH WALL OVERFLOW SCUPPER 12" WIDTH LOCATED MAXIMUM OF 8" FROM PRIMARY SCUPPER.
9. INSTALL SECOND LAYER OF ROOF MEMBRANE FOR 36" (915mm) PERIMETER AROUND ROOF TOP EQUIPMENT.
10. ROOF ACCESS LADDER WITH LOCKABLE LADDER GUARD CAGE.
11. CANOPY COLUMN BELOW. REFER TO STRUCTURAL FOR ADDITIONAL INFORMATION. ALIGN DOWNSPOUTS AND COLUMNS AS SHOWN ON BUILDING DETAILS SHEET A501.
12. CANOPY GUTTER, SLOPED TO DOWNSPOUT.
13. FLAT ROOF WALKWAY PAD TO ROOF TOP UNIT.
14. PATIO FANS ATTACHED TO CANOPY UNDERSIDE. SEE SCHEDULES AND ELECTRICAL FOR MORE INFO.

- INDICATES CANOPY RECESSED CAN LIGHT. LITHONIA WF4-LED-30K-MB FIXTURE DID: X0008. SEE LIGHTING SCHEDULE FOR ADDITIONAL INFORMATION.
- INDICATES CANOPY RECESSED CAN LIGHT. NU3-RAPH-SW-16LM-27K-90-D50-120/277-DIM10Z-NC-BK FIXTURE DID: 21304. SEE LIGHTING SCHEDULE FOR ADDITIONAL INFORMATION.
- INDICATES LED STRIP LIGHT WITHIN 6" LIGHT COVE. FIXTURE DID: 21305. SEE DETAIL AND LIGHTING SCHEDULE FOR ADDITIONAL INFORMATION.

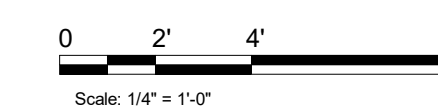
GENERAL NOTES

- A. GENERAL CONTRACTOR TO VERIFY ALL DIMENSIONS AND NOTIFY STARBUCKS CONSTRUCTION MANAGER OF ANY DISCREPANCIES PRIOR TO CONSTRUCTION. ALL DIMENSIONS TO BE TAKEN FROM DESIGNATED DATUM POINT.
- B. IN FREEZE THAW CLIMATES ONLY: INSTALL SELF-REGULATING HEAT TAPE IN ALL DOWNSPOUTS. SEE ELECTRICAL FOR FURTHER INFORMATION.
- C. ROOF TOP PLUMBING VENTS ARE NOT SHOWN FOR CLARITY. REFER TO PLUMBING DRAWINGS FOR VTR LOCATIONS AND FURTHER INFORMATION.
- D. GC TO PROVIDE FLASHED ROOF PENETRATIONS FOR ALL TENANT VENTS INCLUDING TENANT SUPPLIED WATER HEATER (B VENT) AND REMOTE ROOF TOP CONDENSING UNITS PER TENANT'S CONSTRUCTION DOCUMENTS.
- E. GC TO FURNISH AND INSTALL ALL PLUMBING VENTS PER TENANT'S CONSTRUCTION DOCUMENTS FROM THE ROOF THROUGH FLASHING TO A LOCATION ABOVE THE PROPOSED TENANT CEILING IN THE PREMISES.
- F. GC TO FURNISH AND INSTALL HVAC ROOFTOP UNITS (RTU) OR SPLIT SYSTEMS, INCLUDING ALL ELECTRICAL CONNECTIONS, PLUMBING CONNECTIONS, GAS CONNECTIONS AND THERMOSTATS/HVAC CONTROLS PER TENANT'S CONSTRUCTION DOCUMENTS, MANUFACTURER RECOMMENDATIONS AND ALL APPLICABLE CODES.
- G. THERMOSTATS/HVAC CONTROLS SHALL COMPLY WITH TENANT'S CONSTRUCTION DOCUMENTS AND ANY/ALL CODE REQUIREMENTS. MINIMUM ONE (1) THERMOSTAT FOR EACH UNIT WITH REMOTE SENSORS TO BE LOCATED ACCORDING TO TENANT'S CONSTRUCTION DOCUMENTS.
- H. GC TO FURNISH AND INSTALL ALL RESTROOM EXHAUST DUCTWORK, CURBS AND CONTINUOUSLY OPERATING EXHAUST FAN (300 CFM MINIMUM COMBINED OR 125 CFM PER RESTROOM), AS DEFINED BY TENANT'S CONSTRUCTION DOCUMENTS. LANDLORD WILL BE RESPONSIBLE FOR ALL WORK REQUIRED TO PROPERLY SEAL AROUND ANY AND ALL PENETRATIONS, INCLUDING, BUT NOT LIMITED TO ROOF OR EXTERIOR WALL PENETRATIONS.



SHELL ROOF PLAN

Scale: 1/4" = 1'-0"



PROJECT

NORR PROJECT NO.: 21-0014-00

**29N + SEMINOLE LANE
FUTURE STARBUCKS**

2231 Seminole Lane
Charlottesville, Virginia 22901
Albemarle County

DEVELOPER

COMMERCIAL RENTALS LLC
1024 Carrington Place, Suite 100
Charlottesville, Virginia 22901
[434] 989.8667

ARCHITECT

NORR

325 North La Salle Street, Suite 500
Chicago, Illinois 60654
norr.com

STRUCTURAL ENGINEER

PILOTTOWN ENGINEERING
17585 Nassau Commons Boulevard, Unit 3
Lewes, Delaware 19958
[302] 703.1770

MEP ENGINEER

ALKEMEYER & ASSOCIATES
353 Marshall Avenue
St. Louis, Missouri 63119
[314] 772.1782

CIVIL ENGINEER

TIMMONS GROUP
608 Preston Avenue, Suite 200
Charlottesville, Virginia 22903
[434] 327.1688

NOTES

This drawing has been prepared solely for the use of the client, and there are no representations of any kind made by NORR to any party with whom NORR has not entered into a contract.

SHEET INFORMATION

ISSUES / REVISIONS

NO.	DATE	DESCRIPTION
01	03.19.2021	20% SET

SHEET TITLE

BUILDING ROOF PLAN

SHEET NUMBER

A151

PROFESSIONAL STAMP

MATERIAL LEGEND

MATERIAL:	MANUFACTURER:	COLOR:	DESCRIPTION:	MATERIAL NOTES:
MT-1 MT-2	LOCALLY SOURCED	TO MATCH RAL#7021 MATTE MT0028 - FLAT BLACK	PRE-FINISHED METAL COPING ANODIZED ALUMINUM STOREFRONT SYSTEM	<p>1. ALL SEALANTS TO BE COLOR MATCHED TO ADJACENT MATERIALS. SUBMIT MFR'S FULL RANGE OF COLORS TO ARCHITECT TO REVIEW</p> <p>2. SUBMIT ALL MATERIALS AND COLORS TO ARCHITECT FOR FINAL APPROVAL. NO SUBSTITUTIONS WITHOUT PRIOR APPROVAL.</p>
MT-3	LOCALLY SOURCED	TO MATCH SW0041 DARK HUNTER GREEN	POWDERCOAT METAL CANOPY + POWDERCOAT METAL SCREEN	
MT-4	LOCALLY SOURCED	TO MATCH SW7046 ANONYMOUS	POWDERCOAT UTILITY SCREEN	
BRICK: BR-1	MANUFACTURER + CONTACT: CHEROKEE BRICK, FSS COMPANY ED WEINMANN@FSSCOMPANY.COM 305-691-5881	VELOUR MEDIUM GRAY	BRICK VENEER, SMOOTH/VELOUR, NORMAN MORTAR TO MATCH BRICK	
EIFS: EF-1	MANUFACTURER + CONTACT: DRYVIT, BOB DAZEL BOB.DAZEL@DRYVIT.COM, 734.276.0404	TO BE PAINTED SW7046 ANONYMOUS	EIFS, SANDPEBBLE FINE TEXTURE	
WOOD: WD-1	MANUFACTURER + CONTACT: RESAWN TIMBER CO., HAVENLUXE ANNA PIPHER, ANNA@HAVENLUXE.COM	ABODO / WALNUT	WB10 PROFILE PREFINISHED WITH GRAPHITE AT ACCENT WALL + CANOPY UNDERSIDE	
PAINT: PT-1 PT-2	MANUFACTURER + CONTACT: SHERWIN WILLIAMS, ANDREA DINICE, ANDREA DINICE @SHERWINWILLIAMS.COM 845.641.5798	SW0041 DARK HUNTER GREEN	SEE MT-3 ABOVE	
		SW7046 ANONYMOUS	SEE MT-4 + EF-1 ABOVE	



KEYED NOTES

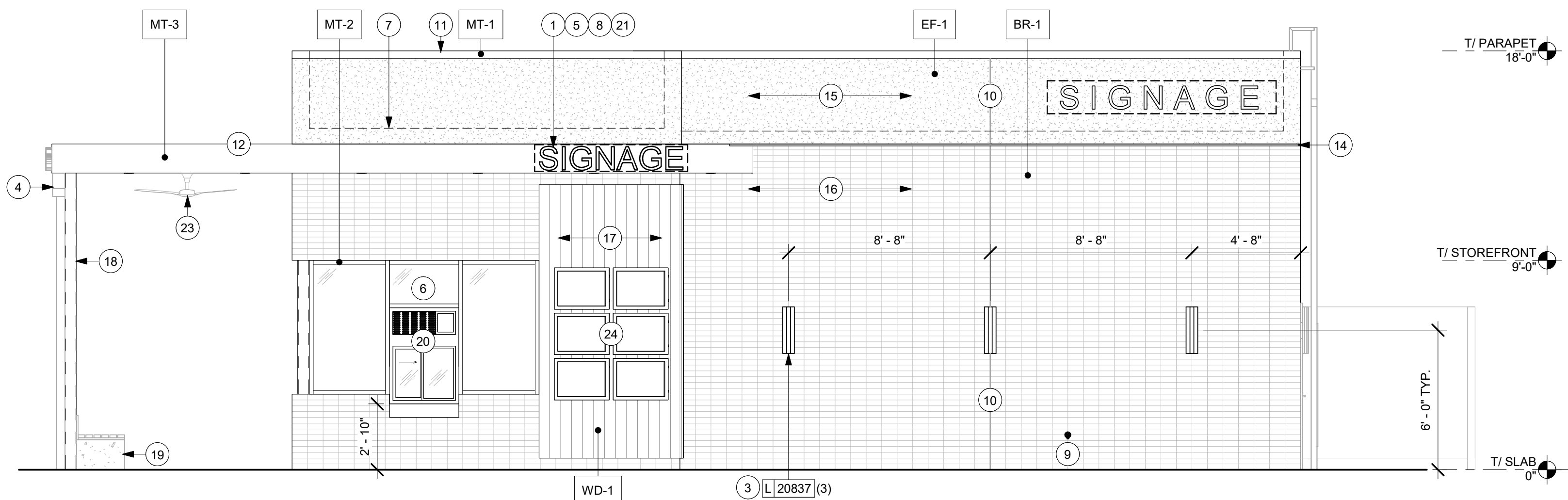
- SIGNAGE VENDOR TO COORDINATE APPROVALS AND PERMITS FOR EXTERIOR SIGNAGE SEPARATELY AS REQUIRED. **NOT INCLUDED IN SHELL OR TENANT BUILD-OUT APPLICATION. CONFIRM FINAL LOCATIONS WITH SIGN VENDOR.**
- PROVIDE COVERED ELECTRICAL GFCI OUTLET AS INDICATED. SEE ELECTRICAL SHEETS.
- WALL-MOUNTED DECORATIVE SCOSCE. SEE LIGHTING SCHEDULE FOR ADDITIONAL INFORMATION.
- CANOPY DOWNSPOUTS CONNECTED TO UNDERGROUND DRAINAGE SYSTEM BELOW FROST LINE; REFER TO CIVIL DRAWINGS FOR ADDITIONAL INFORMATION.
- INSTALL 3/4" MARINE GRADE PLYWOOD BLOCKING FOR EXTERIOR SIGNAGE. EXTEND BLOCKING 8" (205MM) MINIMUM BEYOND EDGE OF SIGNAGE.
- PROVIDE 3" (75MM) HIGH BLACK ACRYLIC STORE ADDRESS ON GLAZING OR PER LOCAL JURISDICTIONAL CODE REQUIREMENTS.
- INDICATES ROOF LINE BEYOND.
- PROVIDE SIGNAGE DISCONNECT AND J-BOX W/ PULL STRING FOR FUTURE BUILDING SIGNAGE.
- RECESSED, LOCKABLE, COVERED, FROST-FREE HOSE BIB. SEE PLUMBING DRAWINGS.
- EXTERIOR FINISH CONTROL JOINT.
- PRE-FINISHED METAL COPING, TYP.
- CUSTOM STEEL CANOPY, POWDER COATED PAINTED SW0041 DARK HUNTER GREEN. SEE DETAILS AND STRUCTURAL.
- METAL SCREEN, POWDER COATED PAINTED SW0041 DARK HUNTER GREEN.
- 1" REVEAL, SEE DETAIL MORE MORE INFO.
- STUCCO PAINTED SW7046 ANONYMOUS.
- CHEROKEE THIN BRICK VENEER; VELOUR MEDIUM GRAY FINISH. STACK BOND PATTERN.
- ACCENT WALL CLAD WITH WOOD BY RESAWN TIMBER CO. ABODO WALNUT FINISH, WB10 PROFILE.
- CANOPY COLUMNS. SEE FLOOR PLAN AND STRUCTURAL.
- WOOD BENCH WITH CAST-IN-PLACE CONCRETE BASE. SEE DETAILS FOR MORE INFO.
- WALK-UP PICK-UP WINDOW AND AIR CURTAIN. SEE SCHEDULES FOR MORE INFO.
- SIGNAGE ATTACHED TO EDGE OF CANOPY.
- SIGNAGE ATTACHED TO METAL SCREEN.
- PATIO FANS ATTACHED TO CANOPY UNDERSIDE. SEE SCHEDULES AND ELECTRICAL FOR MORE INFO.
- WALK-UP PICK-UP WINDOW MENU BOARDS.

GENERAL NOTES

- GENERAL CONTRACTOR TO COORDINATE AND SCHEDULE SIGNAGE INSTALLATION WITH THE SIGNAGE CONTRACTOR PROVIDING A MINIMUM SCHEDULING NOTICE OF 4 WEEKS AND 1 WEEK PRIOR TO SCHEDULED DATE OF INSTALLATION. CONSTRUCTION MANAGER TO PROVIDE GENERAL CONTRACTOR WITH SIGNAGE CONTRACTOR CONTACT INFORMATION.
- GENERAL CONTRACTOR SHALL COORDINATE WITH ELECTRICAL CONTRACTOR TO FURNISH AND INSTALL ELECTRICAL CIRCUITS INCLUDING ALL CONDUIT, WIRE, CONNECTIONS AND BREAKER AT PANEL BOARD NECESSARY TO SERVE SIGNAGE.
- GENERAL CONTRACTOR TO PROVIDE FIRE TREATED WOOD STUD BLOCKING OR EQUIVALENT TO SUPPORT SIGNAGE.
- SIGNAGE CONTRACTOR SHALL VERIFY SIZE AND LOCATION OF ANY AND ALL ALLOWABLE MONUMENT OR POLE SIGNAGE AND PROVIDE SHOP DRAWING(S) PRIOR TO FABRICATION TO THE STARBUCKS DESIGNER FOR APPROVAL.
- SIGNAGE CONTRACTOR TO INSTALL SIGNAGE IN COMPLIANCE WITH LOCAL CODES AND OBTAIN PERMIT.
- SIGNAGE CONTRACTOR TO SUPPLY SHOP DRAWINGS TO CONSTRUCTION MANAGER AND TO THE GENERAL CONTRACTOR AS NEEDED. GENERAL CONTRACTOR TO NOTIFY CONSTRUCTION MANAGER IMMEDIATELY IF SHOP DRAWINGS OR INSTALLATION IS IN DISCREPANCY WITH ARCHITECTURAL DRAWINGS.

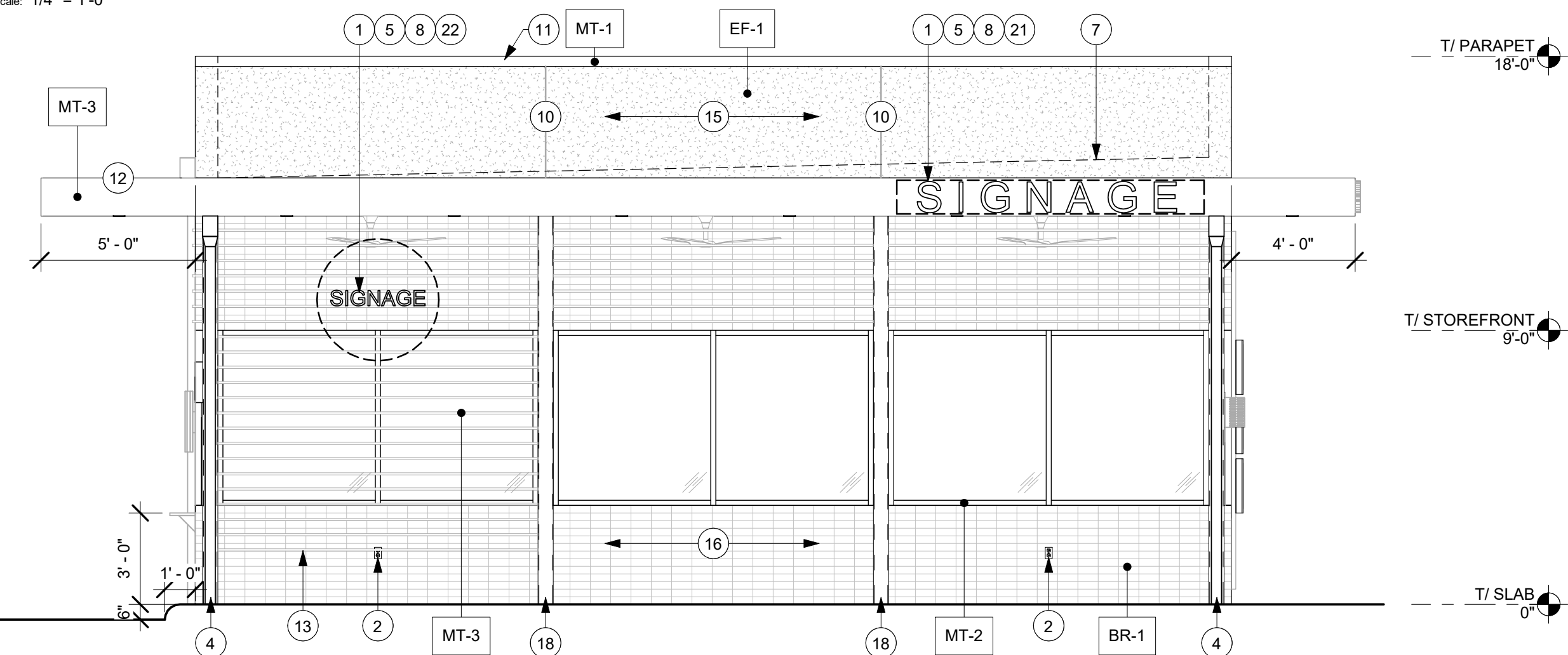
LEGEND - EXT. ELEV.

- HOSE BIB
- DUPLEX



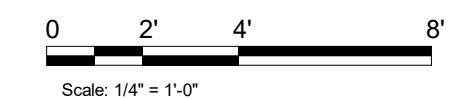
1 WEST ELEVATION

Scale: 1/4" = 1'-0"



2 NORTH ELEVATION

Scale: 1/4" = 1'-0"



PROJECT
NORR PROJECT NO.: 21-0014-00

**29N + SEMINOLE LANE
FUTURE STARBUCKS**

2231 Seminole Lane
Charlottesville, Virginia 22901
Albemarle County

DEVELOPER

COMMERCIAL RENTALS LLC
1024 Carrington Place, Suite 100
Charlottesville, Virginia 22901
(434) 989.8667

ARCHITECT

NORR

325 North La Salle Street, Suite 500
Chicago, Illinois 60654
norr.com

STRUCTURAL ENGINEER

PILOTTOWN ENGINEERING
17585 Nassau Commons Boulevard, Unit 3
Lewes, Delaware 19958
(302) 703.1770

MEP ENGINEER

ALKEMEYER & ASSOCIATES
353 Marshall Avenue
St. Louis, Missouri 63119
(314) 772.1782

CIVIL ENGINEER

TIMMONS GROUP
608 Preston Avenue, Suite 200
Charlottesville, Virginia 22903
(434) 327.1688

NOTES

This drawing has been prepared solely for the use of the client, and there are no representations of any kind made by NORR to any party with whom NORR has not entered into a contract.

SHEET INFORMATION

ISSUES / REVISIONS

NO.	DATE	DESCRIPTION
01	03.19.2021	20% SET

SHEET TITLE

**BUILDING EXTERIOR
ELEVATIONS**

SHEET NUMBER

A201

PROFESSIONAL STAMP

MATERIAL LEGEND

METAL:	MANUFACTURER:	COLOR:	DESCRIPTION:	MATERIAL NOTES:
MT-1 MT-2	LOCALLY SOURCED	TO MATCH RAL#7021 MATTE MT0028 - FLAT BLACK	PRE-FINISHED METAL COPING ANODIZED ALUMINUM STOREFRONT SYSTEM	<p>1. ALL SEALANTS TO BE COLOR MATCHED TO ADJACENT MATERIALS. SUBMIT MFR'S FULL RANGE OF COLORS TO ARCHITECT TO REVIEW</p> <p>2. SUBMIT ALL MATERIALS AND COLORS TO ARCHITECT FOR FINAL APPROVAL. NO SUBSTITUTIONS WITHOUT PRIOR APPROVAL.</p>
MT-3	LOCALLY SOURCED	TO MATCH SW0041 DARK HUNTER GREEN	POWDERCOAT METAL CANOPY + POWDERCOAT METAL SCREEN	
MT-4	LOCALLY SOURCED	TO MATCH SW7046 ANONYMOUS	POWDERCOAT UTILITY SCREEN	
BRICK:	MANUFACTURER + CONTACT: CHEROKEE BRICK, FSS COMPANY ED WEINMANN@FSSCOMPANY.COM 305-691-5881	TO MATCH SW7046 ANONYMOUS	BRICK VENEER, SMOOTH/VELOUR, NORMAN MORTAR TO MATCH BRICK	
EIFS:	MANUFACTURER + CONTACT: DRYVIT, BOB DAZEL BOB.DAZEL@DRYVIT.COM, 734.276.0404	TO BE PAINTED SW7046 ANONYMOUS	EIFS, SANDPEBBLE FINE TEXTURE	
WOOD:	MANUFACTURER + CONTACT: RESAWN TIMBER CO., HAVENLUXE ANNA PIPHER, ANNA@HAVENLUXE.COM	ABODO / WALNUT	WB10 PROFILE AT ACCENT WALL + CANOPY UNDERSIDE	
PAINT:	MANUFACTURER + CONTACT: SHERWIN WILLIAMS, ANDREA DINICE, ANDREA DINICE @SHERWINWILLIAMS.COM 845.641.5798	SW0041 DARK HUNTER GREEN	SEE MT-3 ABOVE	
		SW7046 ANONYMOUS	SEE MT-4 + EF-1 ABOVE	



KEYED NOTES

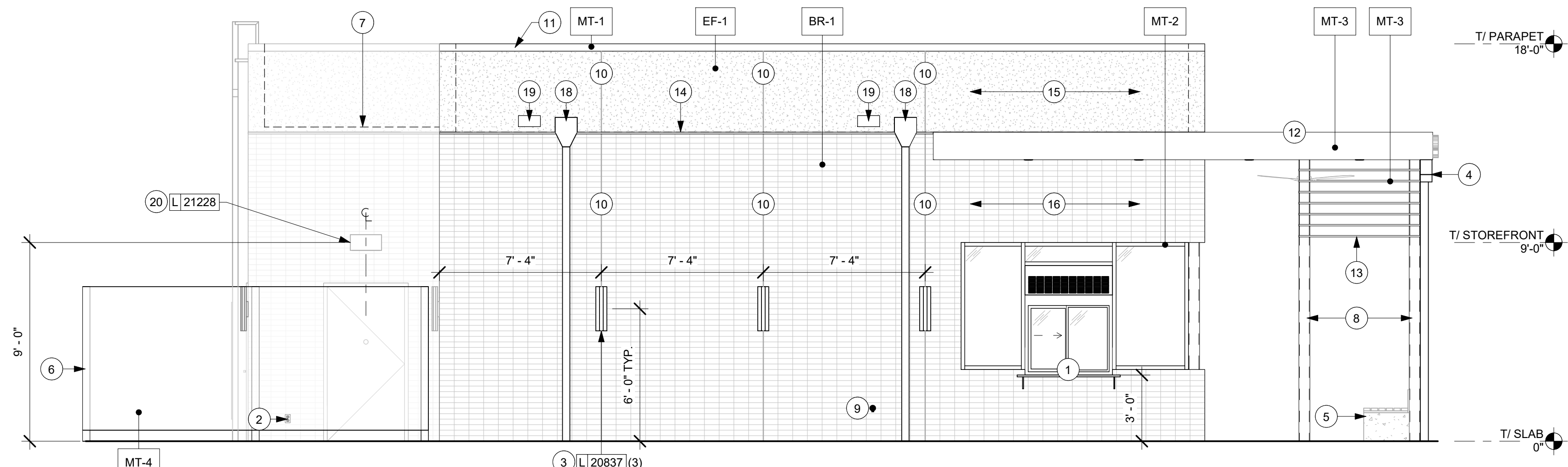
- DRIVE-THRU WINDOW, SHELF, AND AIR CURTAIN. SEE SCHEDULES FOR MORE INFO.
- PROVIDE COVERED ELECTRICAL GFCI OUTLET AS INDICATED. SEE ELECTRICAL SHEETS.
- WALL-MOUNTED DECORATIVE SCONCE. SEE LIGHTING SCHEDULE FOR ADDITIONAL INFORMATION.
- CANOPY DOWNSPOUTS CONNECTED TO UNDERGROUND DRAINAGE SYSTEM BELOW FROST LINE; REFER TO CIVIL DRAWINGS FOR ADDITIONAL INFORMATION.
- WOOD BENCH WITH CAST-IN-PLACE CONCRETE BASE. SEE DETAILS FOR MORE INFO.
- REAR SERVICE DOOR / UTILITY SCREENING. SEE DETAIL FOR MORE INFO.
- INDICATES ROOF LINE BEYOND.
- CANOPY COLUMNS. SEE FLOOR PLAN AND STRUCTURAL.
- RECESSED, LOCKABLE, COVERED, FROST-FREE HOSE BIB.
- EXTERIOR FINISH CONTROL JOINT.
- PRE-FINISHED METAL COPING, TYP.
- CUSTOM STEEL CANOPY, POWDER COATED PAINTED SW0041 DARK HUNTER GREEN. SEE DETAILS AND STRUCTURAL.
- METAL SCREEN, POWDER COATED PAINTED SW0041 DARK HUNTER GREEN.
- 1" REVEAL, SEE DETAIL MORE MORE INFO.
- STUCCO PAINTED SW7046 ANONYMOUS.
- CHEROKEE THIN BRICK VENEER; VELOUR MEDIUM GRAY FINISH. STACK BOND PATTERN.
- ROOF ACCESS LADDER WITH LOCKABLE LADDER GUARD CAGE. SEE DETAILS FOR MORE INFO.
- PARAPET SCUPPER AND DOWNSPOUT CONNECTED TO STORM DRAINAGE LINES BELOW.
- THROUGH WALL OVERFLOW SCUPPER 12" WIDTH LOCATED MAXIMUM OF 8" FROM PRIMARY SCUPPER.
- REAR SERVICE DOOR SECURITY LIGHT BY LL. SEE LIGHTING SCHEDULE FOR MORE INFO.

GENERAL NOTES

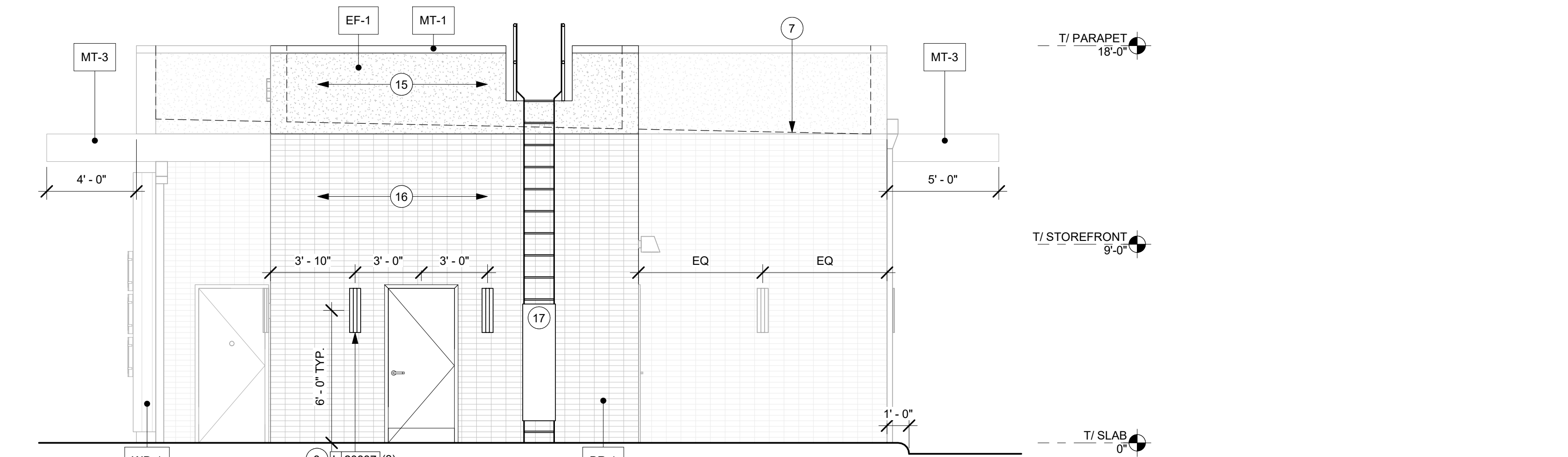
- GENERAL CONTRACTOR TO COORDINATE AND SCHEDULE SIGNAGE INSTALLATION WITH THE SIGNAGE CONTRACTOR PROVIDING A MINIMUM SCHEDULING NOTICE OF 4 WEEKS AND 1 WEEK PRIOR TO SCHEDULED DATE OF INSTALLATION. CONSTRUCTION MANAGER TO PROVIDE GENERAL CONTRACTOR WITH SIGNAGE CONTRACTOR CONTACT INFORMATION.
- GENERAL CONTRACTOR SHALL COORDINATE WITH ELECTRICAL CONTRACTOR TO FURNISH AND INSTALL ELECTRICAL CIRCUITS INCLUDING ALL CONDUIT, WIRE, CONNECTIONS AND BREAKER AT PANEL BOARD NECESSARY TO SERVE SIGNAGE.
- GENERAL CONTRACTOR TO PROVIDE FIRE TREATED WOOD STUD BLOCKING OR EQUIVALENT TO SUPPORT SIGNAGE.
- SIGNAGE CONTRACTOR SHALL VERIFY SIZE AND LOCATION OF ANY AND ALL ALLOWABLE MONUMENT OR POLE SIGNAGE AND PROVIDE SHOP DRAWING(S) PRIOR TO FABRICATION TO THE STARBUCKS DESIGNER FOR APPROVAL.
- SIGNAGE CONTRACTOR TO INSTALL SIGNAGE IN COMPLIANCE WITH LOCAL CODES AND OBTAIN PERMIT.
- SIGNAGE CONTRACTOR TO SUPPLY SHOP DRAWINGS TO CONSTRUCTION MANAGER AND TO THE GENERAL CONTRACTOR AS NEEDED. GENERAL CONTRACTOR TO NOTIFY CONSTRUCTION MANAGER IMMEDIATELY IF SHOP DRAWINGS OR INSTALLATION IS IN DISCREPANCY WITH ARCHITECTURAL DRAWINGS.

LEGEND - EXT. ELEV.

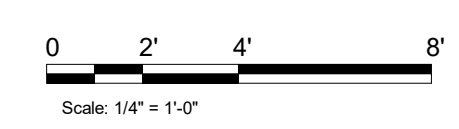
- HOSE BIB
- DUPLEX



1 EAST ELEVATION
Scale: 1/4" = 1'-0"



2 SOUTH ELEVATION
Scale: 1/4" = 1'-0"



PROJECT

NORR PROJECT NO.: 21-0014-00

**29N + SEMINOLE LANE
FUTURE STARBUCKS**

2231 Seminole Lane
Charlottesville, Virginia 22901
Albemarle County

DEVELOPER

COMMERCIAL RENTALS LLC
1024 Carrington Place, Suite 100
Charlottesville, Virginia 22901
[434] 989.8667

ARCHITECT



325 North La Salle Street, Suite 500
Chicago, Illinois 60654
norr.com

STRUCTURAL ENGINEER

PILOTTOWN ENGINEERING
17585 Nassau Commons Boulevard, Unit 3
Lewes, Delaware 19958
[302] 703.1770

MEP ENGINEER

ALKEMEYER & ASSOCIATES
353 Marshall Avenue
St. Louis, Missouri 63119
[314] 772.1782

CIVIL ENGINEER

TIMMONS GROUP
608 Preston Avenue, Suite 200
Charlottesville, Virginia 22903
[434] 327.1688

NOTES

This drawing has been prepared solely for the use of the client, and there are no representations of any kind made by NORR to any party with whom NORR has not entered into a contract.

SHEET INFORMATION

ISSUES / REVISIONS

NO.	DATE	DESCRIPTION
01	03.19.2021	20% SET

SHEET TITLE

**BUILDING EXTERIOR
ELEVATIONS**

SHEET NUMBER

A202

PROFESSIONAL STAMP

PROJECT

NORR PROJECT NO.: 21-0014-00

**29N + SEMINOLE LANE
FUTURE STARBUCKS**

2231 Seminole Lane
Charlottesville, Virginia 22901
Albemarle County

DEVELOPER

COMMERCIAL RENTALS LLC
1024 Carrington Place, Suite 100
Charlottesville, Virginia 22901
[434] 989.8667

ARCHITECT

NORR

325 North La Salle Street, Suite 500
Chicago, Illinois 60654
norr.com

STRUCTURAL ENGINEER

PILOTTOWN ENGINEERING
17585 Nassau Commons Boulevard, Unit 3
Lewes, Delaware 19958
[302] 703.1770

MEP ENGINEER

ALKEMEYER & ASSOCIATES
353 Marshall Avenue
St. Louis, Missouri 63119
[314] 772.1782

CIVIL ENGINEER

TIMMONS GROUP
608 Preston Avenue, Suite 200
Charlottesville, Virginia 22903
[434] 327.1688

NOTES

This drawing has been prepared solely for the use of the client, and there are no representations of any kind made by NORR to any party with whom NORR has not entered into a contract.

SHEET INFORMATION

ISSUES / REVISIONS

NO.	DATE	DESCRIPTION
01	03.19.2021	20% SET

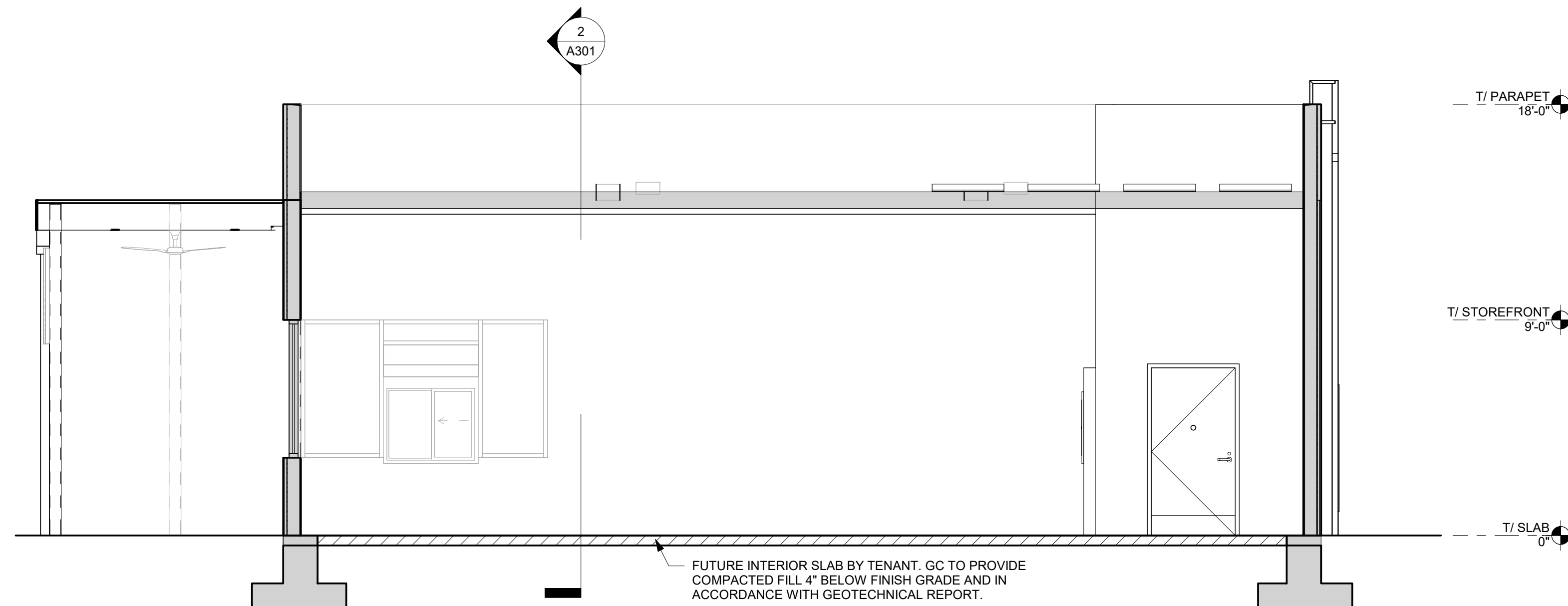
SHEET TITLE

BUILDING SECTIONS

SHEET NUMBER

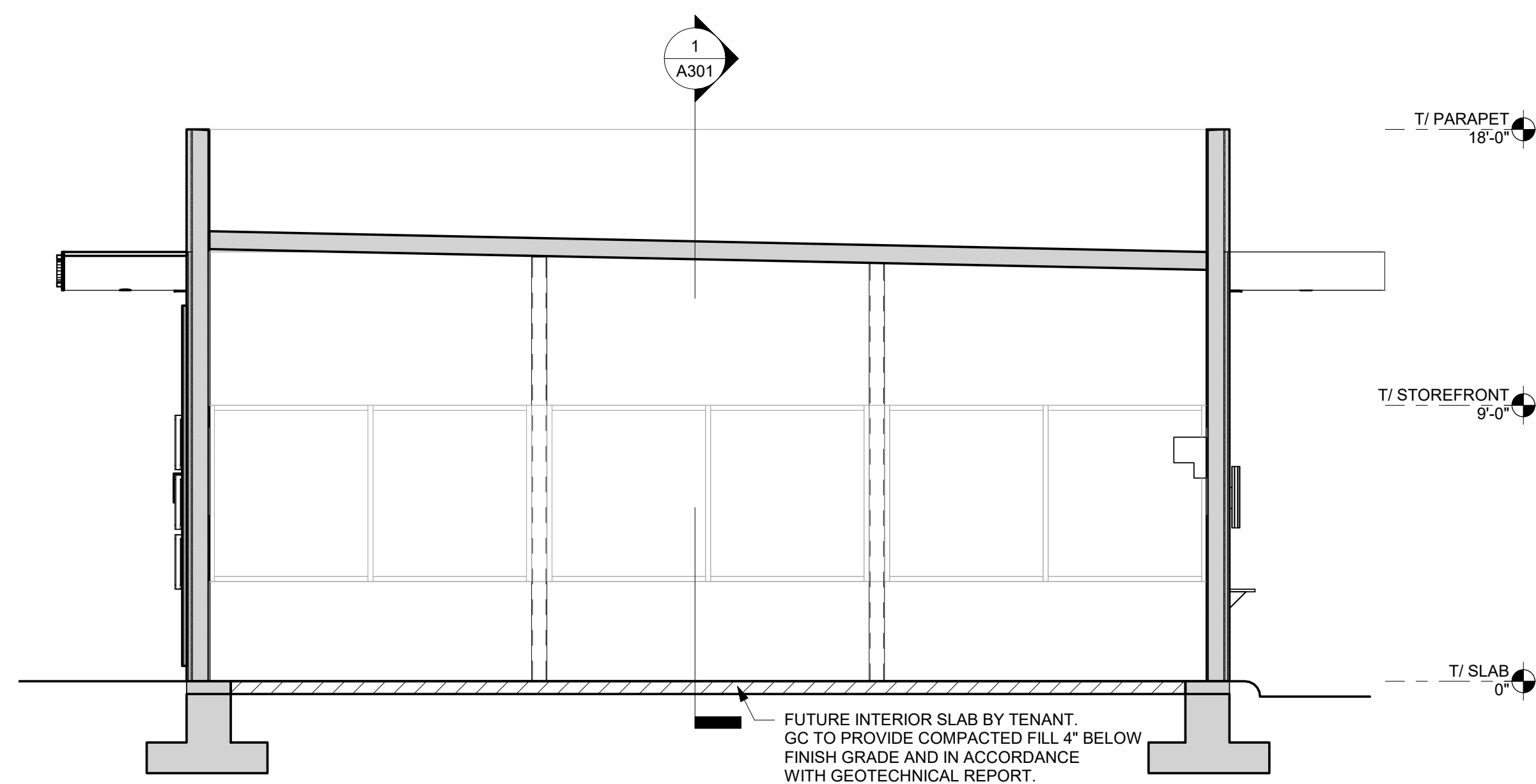
A301

PROFESSIONAL STAMP



1 LONGITUDINAL SECTION

Scale: 1/4" = 1'-0"



2 TRANSVERSE SECTION

Scale: 1/4" = 1'-0"

