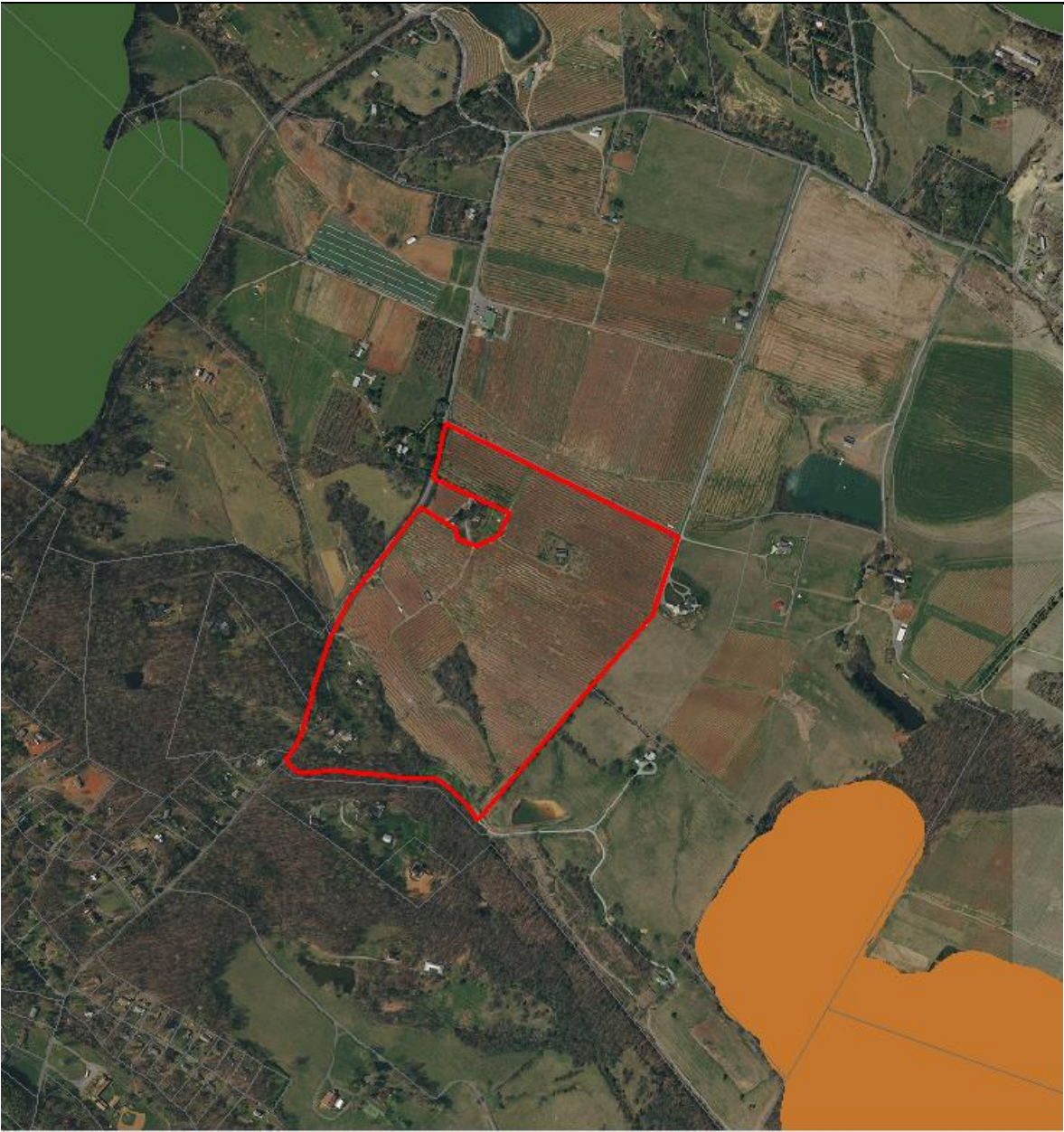
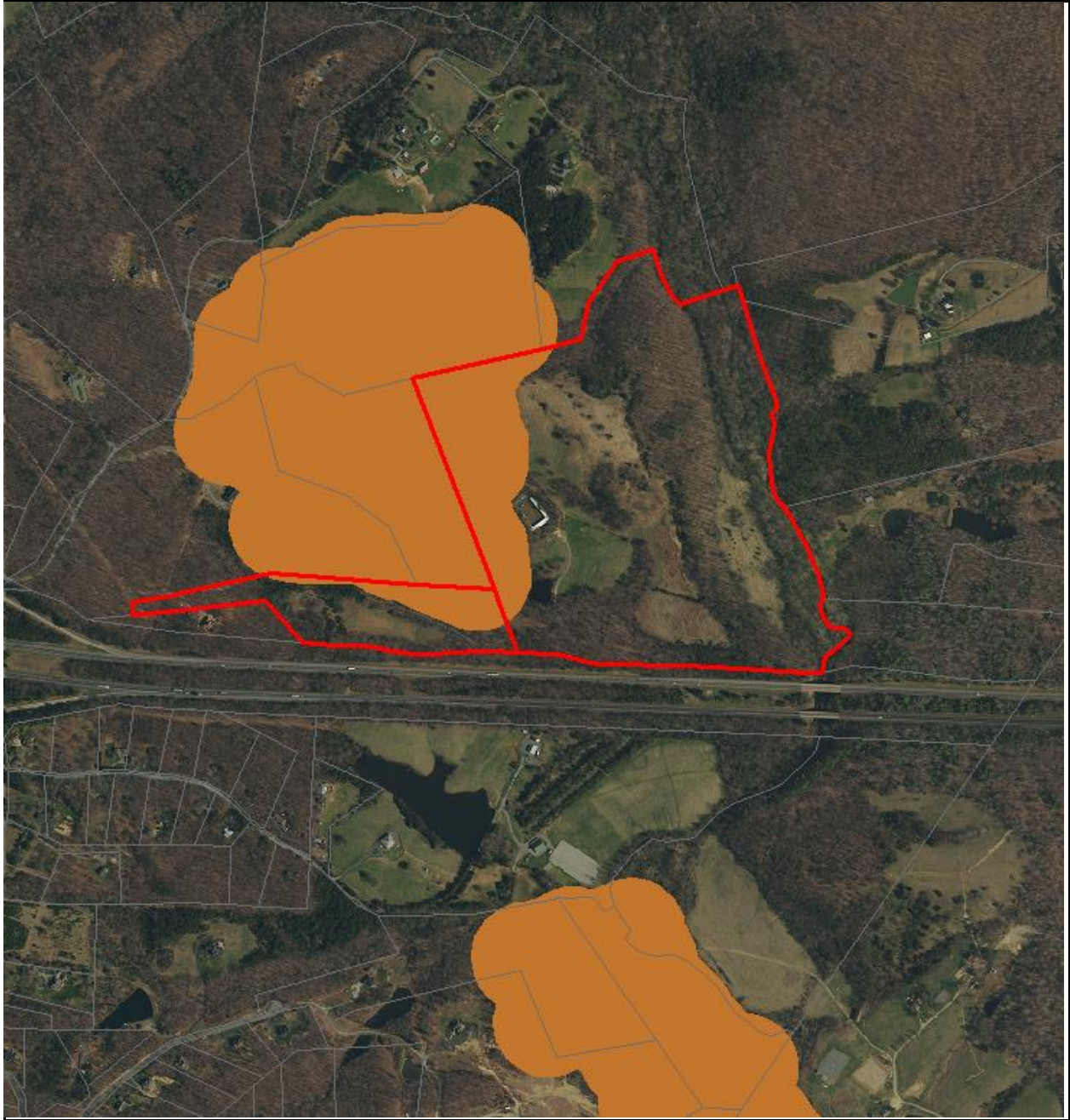


- A. The parcel is overlapped by a **Large Forest Block** identified in the County BAP.
- The composite score for *large forest blocks* within the BAP includes size, connectivity, compactness (minimal edge), important sites, DCR occurrences, resiliency to climate change, and other factors (see BAP, pages 11, 20).
 - Proposed scoring:
 - Forest block composite score of 3.1-4 (orange) = 1 point
 - Forest block composite score of >4.1 (green) = 2 points
 - Forest block overlaps more than half of the parcel = 2 additional points



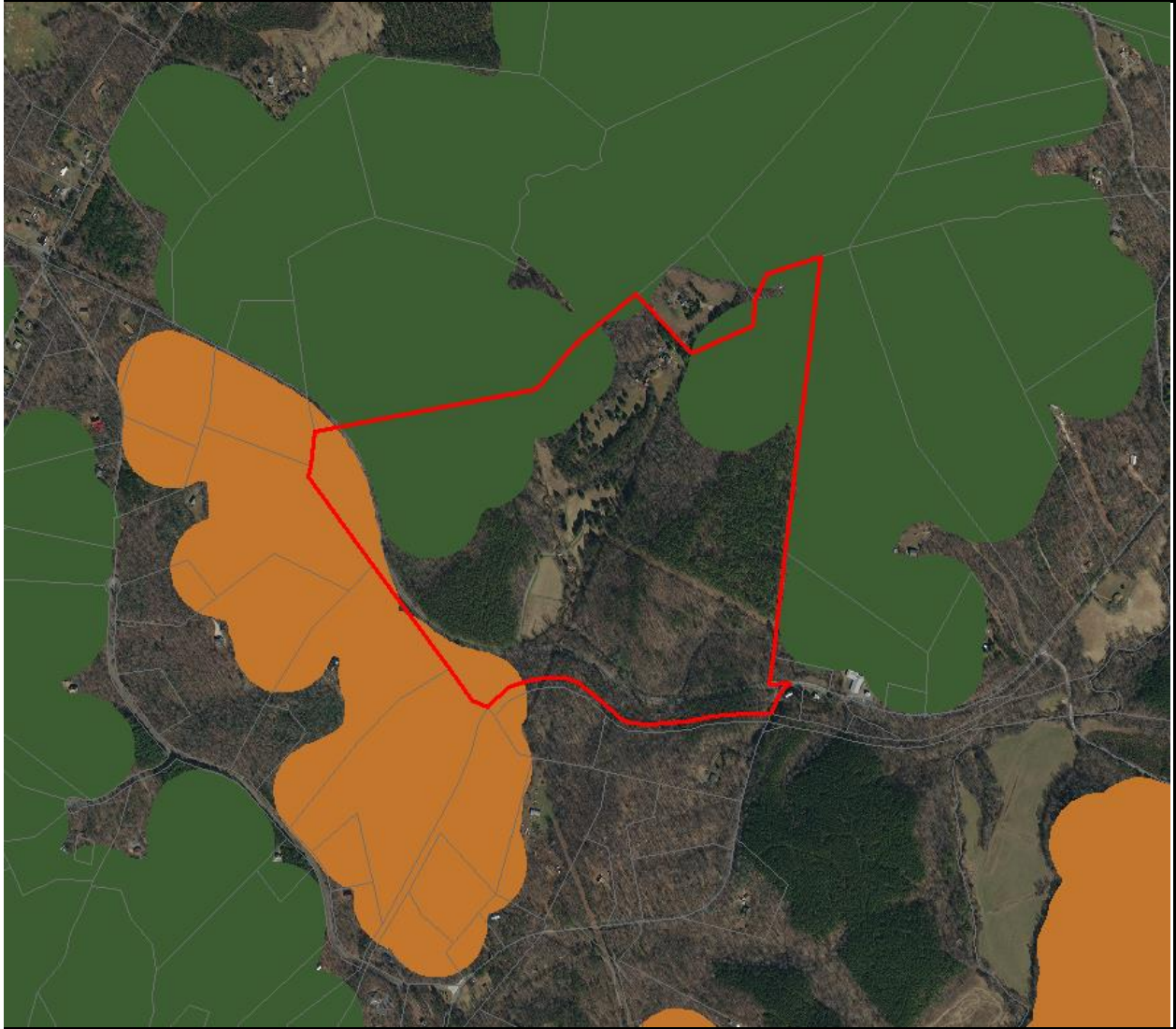
Gladys Clarke (TM 55, Parcel 11A)

Scored 0 points: neither type of forest block intersects or overlaps property.



Boyle (TM 95, Parcels 1 & 18)

Scored 1 point: forest block intersects property but overlaps by less than 50%. Had the block been green (the more valuable type of forest block), this property would have scored 2 points.



Brigish (TM 126, Parcel 32)

Scored 2 points: more valuable forest block (green) intersects property but overlaps by less than 50%.



Chester (TM 65, Parcels 11, 11B & 11C)

Scored 3 points: less valuable forest block (orange) intersects property and overlaps by more than 50%.



Ruddock (TM 119, Parcel 22)

Scored 4 points: more valuable forest block intersects property and overlaps by more than 50%.