

**ARB COMPREHENSIVE SIGN REVIEW APPROVED CONDITIONS**

**PROJECT #/NAME: ARB 16-31 & ARB 16-32 West Park Plaza – Rio West 301 - 343**

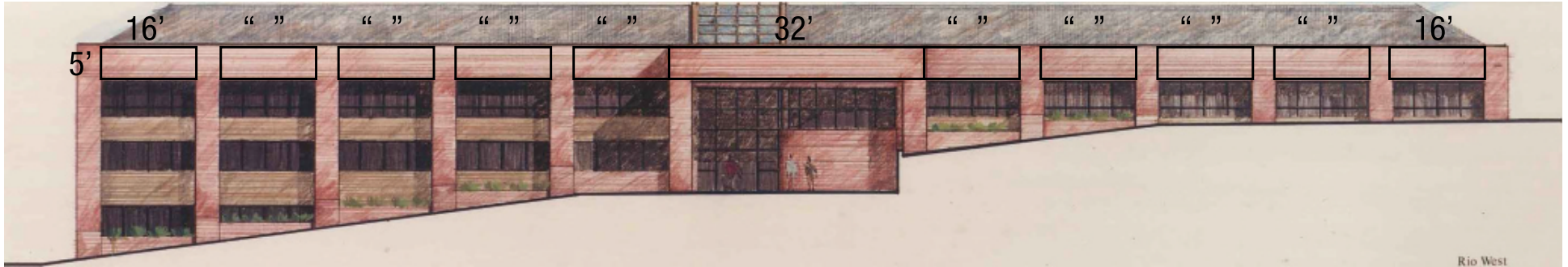
**TAX MAP/PARCEL#:061X1-00-00-00200**

<b>SIGN FEATURE</b>	<b>APPROVED CONDITION</b>	<b>NOTES</b>
<b>SIGN TYPE</b>	Individual letters.	
<b>LETTER FACE COLOR</b>	White	
<b>TRIM CAP COLOR/RETURN COLOR</b>	N/A	
<b>RACEWAY COLOR</b>	N/A	
<b>CABINET FACE COLORS</b>	N/A	
<b>SIZE LIMITATIONS</b>	Standard guidelines apply.	
<b>LOCATION(S)</b>	In sign panels illustrated by approved building elevations.	
<b>MOUNTING DETAILS</b>	Flush Mount	
<b>LOGO/GRAPHICS DETAILS</b>	Standard guidelines apply.	
<b>ILLUMINATION DETAILS</b>	No Illumination	
<b>TEXT</b>	Not specified.	
<b>LETTER TYPE/FONT</b>	Not specified.	
<b>MATERIALS</b>	Formed Plastic or other materials with a similar appearance.	

**This form outlines the specific design criteria established for signs at this location. All standard ARB Sign Guidelines also apply.**

## RIO WEST - SIGN BAND

SIGNS MAY BE LOCATED IN THESE MARKED LOCATIONS,  
 SUBJECT TO ZONING ORDINANCE REGULATIONS AND ENTRANCE  
 CORRIDOR SIGN DESIGN GUIDELINES FOR SIZE, DESIGN AND PROPORTION



Client: Tucker Griffin Barnes  
 Greg Harris  
 gharris@wdtmgmt.com  
 Phone/Email: (434)-973-7474

**SIGN PLACEMENT MAY CHANGE**  
 We cannot guarantee exact color matches.  
 All sizes and dimensions are illustrated for  
 client's conception of project and are not to be  
 understood as being exact size of exact scale.

Drawing scale: Not to Scale  
 Drawing Location: P:\2016\EL - Electrical\  
 T\Tucker Griffin Barnes\HTS Renderings  
 \Current  
 Revision #:



2165 Seminole Trail  
 Charlottesville, VA 22901

Layout by: Adria Sprouse  
 phone: (800)482-6603 ext.107  
 fax: (434)974-6898  
 asprouse@htsva.com

Preliminary Drawing  
 Final Drawing